

OPEN HOUSE

SPECIAL 1-DAY ONLY- WEDNESDAY, JANUARY 6, 1982

DECEMBER 28, 1981

THRU

JANUARY 8, 1982

Day 7 A.M. to 5 P.M.

Day 8 7 A.M. to 12 Noon

Days 25, 26, Jan. 1

Maintenance and
Operation Seminars

10:30 A.M. Tractors

2:00 P.M. Combines

LUNCH
WILL BE
SERVED
11-3

★ Representatives from various manufacturers will
be on hand to demonstrate products and answer
questions

★ Join us during Open House for Fun & Fellowship

SPECIALS CASH & CARRY

TILLAGE PARTS

PLOW PARTS
15% OFF
Regular Price



TWISTED CHISEL POINTS

- Heat treated, tumbled & varnished
- 1/2" thick for longer wear
- Fits 2 1/4" centers for 7/16" plow bolts

3x1/2x22 R.H.... **\$9.95**
3x1/2x22 L.H.... **\$9.95**

NEW SURPLUS SPECIALS

Part #	Description	Model #	SALE PRICE
10-019A91	Pre Cleaner	MF 1150	\$39.84
10-169A91	Vert. ExH	Mt230-235	\$43.04
10-199A91	Air		
	Conditioner	Mt1505-1805	\$547.50
677439	PTO Ext.	Mt 165-175-180	\$42.53
677612	3 Point		
	Linkage	Mt 20-30 Ind.	\$141.78
10092A91	Pre Cleaner	1105-1135-1155	\$31.65
10151A91	Lower Link		
	Conversion	1105-1135-1155	\$254.29
677467	Pre Cleaner	150-165-175-180	\$28.37
677578	Drawbar		
	Hammer Strap	1100-1130-1150	\$31.10
677593	Pre Cleaner	1080	\$20.58
677600	Stabilizer	1080	\$75.45
1000 lb.	Wheel		
(each)	Weights	1100-1130-1150	\$750.00

NEW WAGON PARTS

15x5 Wheels, 6 Lug	\$10.00
15x6 Wheels, 6 Lug	\$20.00
15x8 Wheels, 6 Lug	\$25.00
15x10 Wheels, 6 Lug	\$25.00

FRONT END WEIGHTS

Easy-to-mount weight frames add safety & stability
SALE..\$35.00
While They Last

COTTER PIN ASSORTMENT

SALE \$4.14

SPRING PIN ASSORTMENT

SALE \$7.80

HITCHPIN CLIP ASSORTMENT

SALE \$3.91

CHEMICALS

HAND CLEANER

1 lb..... Sale **\$1.33**
4 1/2 lb..... Sale **\$5.82**



ENGINE DEGREASER

Ideal for cleaning inside engine compartment. Spray on from aerosol can, wash off with plain water pressure

\$3.15

PAINT

Red or Gray

- Spray Can..... **\$2.53**
- Quart..... **\$6.72**
- Gallon..... **\$22.80**



MF FIRE EXTINGUISHERS

All Massey Ferguson Fire Extinguishers use A B C Chemical. Class A includes burning wood, paper, fabric and other ordinary combustibles. Class B is fire on top of liquids like gasoline, grease or oil. Class C is fire in live electrical circuits. A B C Chemical has been proven to be most effective in extinguishing stubborn and costly equipment fires.



2 3/4 lbs. **\$17.60**
5 lbs. **\$24.44**
10 lbs. **\$42.63**

- SMV Emblem **\$5.06**
- SMV Decal. **\$3.87**
- SMV Spade Mount **\$1.19**
- SMV Socket..... **\$.98**

PRESSURE WASHERS

New Models:

7550 Pressure Washer .. **\$425.85**
7650 Pressure Washer .. **\$566.00**
7750 Pressure Washer **\$1037.00**



Sell Out on Old Models:

450 Pressure Washer **\$192.00**
500 Pressure Washer **\$265.00**
600 Pressure Washer **\$440.00**

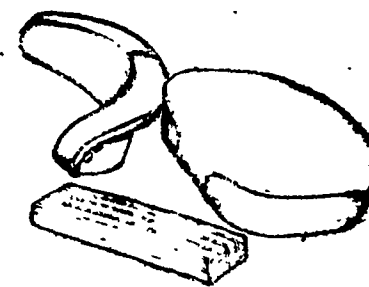
PRESSURE WASHER SOAP

General Purpose

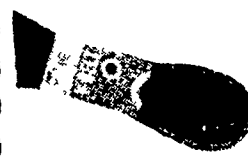
10 lb. Pkg. **\$15.92**

Heavy Duty

10 lb. Pkg. **\$15.51**



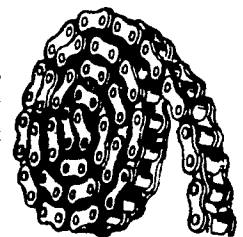
SEAT APPLICATIONS FOR MF AG TRACTORS
15% OFF
Reg. Price



MF BELTS
Genuine Massey Ferguson engineering approved
15% OFF
Regular Price

ROLLER CHAIN

Shot-peened parts, solid rollers, factory pre-stitched, vacuum pre-lubrication. This chain is made of special bushings and pins, and offers tremendous RPM & fatigue resistance.



#40 **\$1.41** per/ft.
#50 **\$1.93** per/ft. #50 double **\$4.20** per/ft.
#60 **\$2.74** per/ft. #60 double **\$5.93** per/ft.

CUTTER BAR PARTS



HART CARTER or MF FLOATING CUTTER BARS

H.C. Sections **99¢** H.C. Guards **\$5.36**
M.F. Rigid Headers (Special)
Rigid Sections **82¢** Rigid Guards **\$4.78**

Buy complete Knives and have a spare at
15% OFF Regular Price

LOG CHAINS

5/16 40 Grade Chain .. **\$2.38**
3/8 40 Grade Chain ... **\$2.92**



MATERIAL - High carbon steel. Minimum + ensile 85,000 psi.

5/16 30 Grade Chain..... **\$1.65**
3/8 30 Grade Chain..... **\$2.38**

MATERIAL - Low carbon steel. Minimum tensile 55,000 psi

CLEVIS HOOKS

For use with Grade 30 Proof Coil Chain or Grade 40 High Test Chain

5/16 grab hooks..... **\$2.02**
3/8 grab hooks..... **\$3.26**



LINCH PINS
4 for \$1.00

WEAVER & SONS, INC.

17540
56-2321

Located: 4 miles west of New Holland on Route 23, one and one-half miles northeast of Leola, on the North Groffdale Road, one mile on the right, opposite Groffdale, Mennonite Church.

10% OFF ON ALL OTHER PARTS

SOLD OVER COUNTER FROM
DEC. 28 to JAN. 8, 1982

★ CASH & CARRY ★

**FOR MORE SPECIALS
TURN THE PAGE**

