

## Land Bank retires excess stock

YORK — Local farmers, who get their long-term financing through the Federal Land Bank Association, will find a pleasant surprise in their mail boxes this month.

The Board of Directors of the Federal Land Bank Association of York has approved the retirement of most capital stock and participation certificates of the Federal Land Bank in excess of 6% of the unmatured principal balance.

This will mean a check to many

of the farmer-borrowers who are also the owners of the Farm Credit Cooperatives.

Robert E. Vinson, General Manager of the York Association, said this week that his office hopes to have most of the checks in the mail within the next two weeks. He added that, "While individual payments may not seem to be significantly large in amount, the total fund will put more than \$50,700 back into our Association's agricultural sectors this year along."

## Gardner is ASA president

ATLANTA, Ga. — Charles O. Gardner, Foundation (Regents) Professor and professor of agronomy at the University of Nebraska-Lincoln, became president of the American Society of Agronomy recently during ceremonies at the society's annual banquet. He succeeds Sterling R. Olsen as head of the 11,500-member scientific, educational organization.

Gardner's major research focuses on quantitative genetic studies and their application to plant breeding, and on applications of statistics and computers to agronomic research.

He has made significant contributions in both theoretical and applied plant breeding, and in demonstration the utility of

quantitative genetics as a general model and guide for plant breeding operations. He has also made contributions in negating and overdominance hypothesis as a major course of yield heterosis in corn, in developing efficient procedures for effective selection, and developing genetic models for studying quantitatively inherited traits.

Gardner has served as a technical consultant in plant breeding research for the United Nations, Queensland Australia Department of Agriculture, and the International Crops Research Institute for the Semi-Arid Tropics.

He became a Fellow of ASA in 1964.

Charles F. Eno, professor and chairman of the Soil Science Department at the University of Florida, has been elected president-elect of ASA. He will become president of the scientific, educational organization at the 1982 annual meeting in Anaheim, California.

Eno's area of specialization is in soil microbiology, soil fertility and administration. His accomplishments have involved studies on nitrogen transformation in soils; pioneer work with anhydrous ammonia as a fertilizer; soil-plant pesticide relations; and basic studies of the effects of irradiation on soil organisms, microbial processes, and the nutrient status of the soil.

A leader in developing soils programs in the southeastern United States, Eno has served on numerous ADA committees, including the executive committee and the board of directors. In addition, he was an associate editor of Agronomy Journal and president of the Soil Science Society of America. He is currently serving on the Council for Agricultural Science and Technology board of directors and the American Registry of Certified Professionals in Agronomy, Crops, and Soils board of directors.

An ASA Fellow (1965) and an SSSA Fellow (1976), Eno holds a B.S. and an M.S. from Ohio State University. He received a Ph.D. in soil microbiology from Purdue University.

Other newly-elected ASA officers for 1981-82 include: E.J. Bedker, U.S. Air Force, board representative, Land Use and Management (Division A-2); G.L. Jones, North Carolina State University, Raleigh, board representative, Extension Education (Division A-4); P.A. Sanchez, North Carolina State University, Raleigh, board representative, International Agronomy (Division A-6); and C.F. Douglas, University of Georgia, Tifton, board representative, Field Research Management (Division A-7, provisional).

Also, D.E. Green, Iowa State University, Ames, chairman-elect, Resident Education (Division A-1); G. E. Posler, Kansas State University, Manhattan, chairman-elect, Student Activities (Sub-division A-1a); O.C. Miller, U.S. Air Force, chairman-elect, Land Use and Management (Division A-2); and R. J. Reginato, Water Conservation Laboratory, Phoenix, chairman-elect, Agroclimatology and Agronomic Modeling (Division A-3).

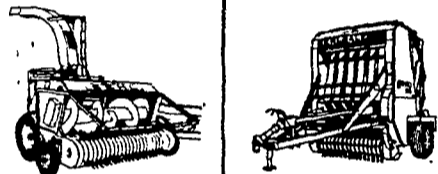
In addition, W. K. Griffith, Potash and Phosphate Institute, Great Falls, Virginia, chairman-elect, Extension Education (Division A-4); V. Van Volk, Oregon State University, Corvallis, chairman-elect, Environmental Quality (Division A-5); S. K. DeDatta, International Rice Research Institute, Manila, Philippines, chairman-elect, International Agronomy (Division A-6); and G. A. Raines, University of Illinois, Urbana, chairman-elect, Field Research Management (Division A-7, provisional).

# Patz

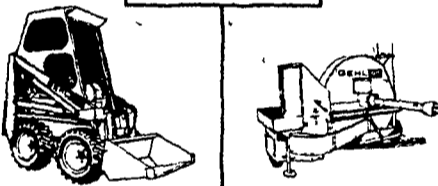
★ Barn Cleaners, Manure Pumps, Manure Stackers, Silo Unloaders, Bunk Feeders, Feed Conveyors

## MARVIN J. HORST

DAIRY EQUIPMENT  
1950 S. 5th Avenue, Lebanon, Pa. 17042  
Phone: 717-272-0871



**GEHL**  
FARM EQUIPMENT



**Waiver of Finance or Interest to YOU!**

If you buy selected Gehl machinery before December 31, 1981 you can select Waiver of Finance or Gehl will pay YOU interest!

Stop by and get full details -- Waiver of Finance or Interest paid to YOU!

Eligible equipment includes qualified forage harvesters, haymaking equipment, skid steer loaders, Mix-All grinder mixers and forage machinery

**PEOPLE'S SALES & SERVICE**  
Oakland Mills, PA  
717-463-2735

**N.G. HERSHEY & SON**  
Manheim, PA  
717-665-2271

**A. L. HERR & BRO.**  
Quarryville, PA  
717-786-3521

**S. JOHNSON HURFF**  
Pole Tavern  
Monroeville, NJ  
609-358-2565 or  
609-769-2565

**STOFFER BROS. INC.**  
Chambersburg, PA  
717-263-8424

**LEBANON VALLEY IMPLEMENT CO., INC.**  
Richland, PA  
717-866-7518

**ARNETT'S GARAGE**  
Rt. 9 Box 125  
Hagerstown, MD  
301-733-0515

**UMBERGER'S MILL**  
Rt. 4 Lebanon, PA  
(Fontana)  
717-867-5161

**ZOOK'S FARM STORE**  
Honey Brook, PA

**MILLER EQUIPMENT CO.**  
RD 1  
Bechtelsville, PA  
215-845-2911

**BINKLEY & HURST BROS.**  
133 Rothsville  
Station Road  
Lititz, PA  
717-626-4705

**AGWAY, INC.**  
Chapman Equip.  
Center  
Chapman, PA  
215-398-2553

**CHAS. J. MCCOMSEY & SONS**  
Hickory Hill, PA  
215-932-2615

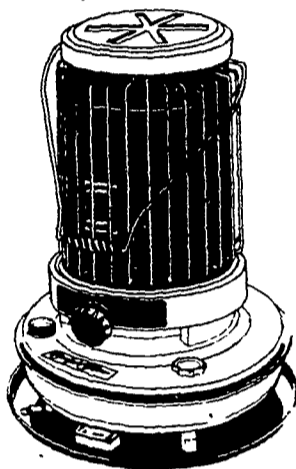
**WERTZ GARAGE**  
Lineboro, MD  
301-374-2672

**CLAIR J. MYERS**  
Lake Road R1  
Thomasville, PA  
717-259-0453

**PETERMAN FARM EQUIPMENT, INC.**  
225 York Rd.  
Carlisle, PA  
717-249-5338

You Can Stay Warm This Winter

HEAT WITH A Comfort Glow



19,500 BTU's

**Kerosene Portable Room Heater**

- 1.8 gals. capacity • Burns over 12.5 hrs.
- Automatic ignition and shutoff

## AARON S. GROFF & SON

FARM & DAIRY STORE

RD 3, Ephrata, PA 17522 (Hinkletown)  
Phone: (717) 354-4631

Store Hours: Mon., Thurs. & Fri. 7 A.M. to 9 P.M.  
Tues. & Wed. 7 A.M. to 5 P.M.  
Sat. 7 A.M. to 4 P.M.

## CUSTOM MADE FEED BINS FOR FARMS — FEED MILLS



- Made of 13 gauge Steel
  - All welded seams
  - Gravity Flow or Auger
- Free Estimates

Also - Steel Roof Trusses for buildings - Portable Hog Buildings - Bucket Elevators - Grain Augers - Distributors - Flow Pipes & Accessories

We Sell, Service & Install  
Ph: 215-944-7808

## STOLTZFUS WELDING SHOP

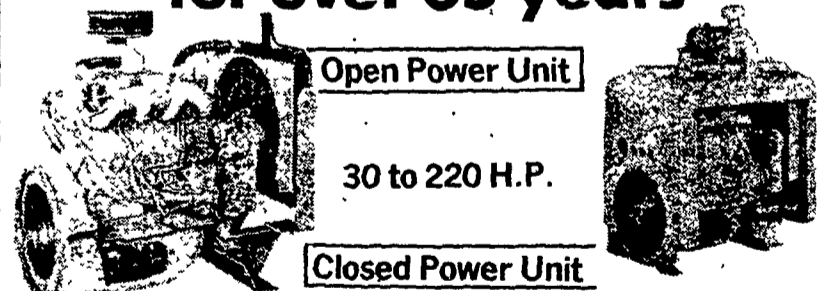
Owner - Samuel P. Stoltzfus  
RD 1011, Dryville Rd.  
Fleetwood, PA 19522

# Cagle



## WHITE ENGINES

Powerful Performers for over 65 years



Open Power Unit

30 to 220 H.P.

Closed Power Unit

Ideal for shops, agricultural generator sets, equipment, etc.

## You Can Bank on White Engines Quality and Performance

Let Us Know Your Service Problems  
24 Hour Service - Check Our Prices

**DISTRIBUTOR:**  
**HOOVER DIESEL SERVICE**

PH: 717-655-6133  
2998 West Newport Rd.  
Ronks, Pa. 17572  
2½ mile East of Leola - Along 772  
DEALER-INQUIRIES INVITED

**DEALER:**  
**B.B. DIESEL SERVICE**

PH: 717-786-2173  
RD 3, Quarryville, Pa.  
2 miles west of  
Georgetown on  
Furnace Road