



HOLIDAY DAIRY TOUR

TUESDAY - DECEMBER 29, 1981

PLAN NOW TO JOIN OUR ANNUAL PENN-JERSEY HARVESTORE DAIRY TOUR!

COME AS A FAMILY

... Learn how successful people combined top management, good cows and HARVESTORE Systems to produce a better life for their farm families!

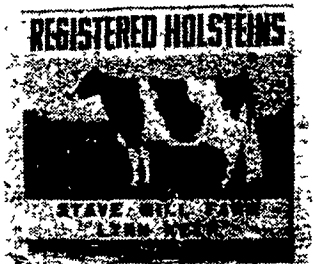
STAVE MILL FARM, LYNN & MARGARET NEER



The Neers have 85 Holsteins on test, with a current average of 19,250 lbs. milk and 701 lbs. butterfat. The cows are divided into four production groups and Lynn uses a total mix ration. He feeds haylage, corn silage and high moisture shelled corn. Alfalfa is grown on 104 acres and corn on 150 acres.

Lynn's breeding program concentrates heavily on Canadian bulls. "I believe the Canadians are way ahead of us in breeding for functional type. But not production, they don't feed like we do."

Foremost in the Neers' thinking is that cows should be kept clean and comfortable. Their cows are well-groomed. Lynn has made rapid progress in his dairy farming operation. Unique ideas have done much to help keep the bills paid.



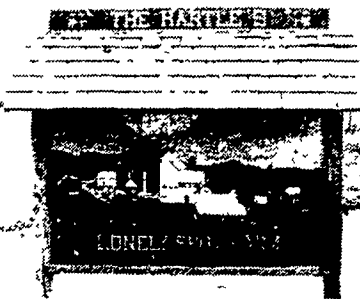
LONELY SPOT FARM, JOE & GLADYS HARTLE, JR.

Joe was recently named "PA Grasslander of the Decade" by the PA. Forage and Grassland Council. Also, was named Master Farmer.

This is a family Holstein dairy operation (4 daughters & 1 son). Young stock are housed in a free stall barn and loose housing is used for dry cows.

Hartles believe "cleanliness is the best advertisement for the dairy business."

There are 66 registered Holsteins on test at Lonely Spot Farm. They finished the D.H.I.A. year at 21,630 lbs. milk and 832 lbs. butterfat. Joe feeds haylage, high moisture shelled corn and corn silage. The cropping program includes 100 acres of alfalfa, 30 acres of mixed hay and 140 acres of corn.



**WHY NOT CALL YOUR HARVESTORE REPRESENTATIVE TODAY?
ENJOY THE TOUR WITH YOUR FARM FRIENDS AND NEIGHBORS!**

Penn-Jersey HARVESTORE® Systems, Inc.

P.O. BOX 7

NEW HOLLAND, PA 17557

PH: 717-354-4051

