

Eighth generation

(Continued from Page D2)

have liked to have added several full sisters to his herd. Unfortunately, Oscar was "one of those bulls that didn't get to stay around long enough," and he left the Hubert Miller herd in Lebanon County after only a short lifetime.

Over the years Mae has produced some outstanding daughters, including Willow Maple Ideal Mary who turned in a record to rank her as the third-place senior 4-year-old for milk production in 1980.

When Mae was a 2-year-old, Harold Bollinger decided it was time to bring the next generation into the operation. Because Donald had been working on the farm since he graduated from Schaefferstown High School in 1961, he was more than ready to join in the Willow Maple operation on a 50:50 basis.

From early on, Donald followed in his father's footsteps and learned the skills needed to be successful in the dairy business. During his school years, he participated in 4-H and FFA activities and was awarded the American Farmer Degree.

This willingness to learn and try new things led the Bollinger partners to ET — embryo transfers — in 1979. Their choice for flushing was, of course, Mae.

The Bollingers weren't disappointed in their first attempt with ET, either. For Mae produced eight calves — six bulls and two heifers, all by Marvex. One of the heifers is currently in the milking string, and the bulls were marketed both locally and abroad.

Their experience with ET however, taught the two dairymen a valuable lesson. They quickly learned that bull calves occur more frequently than heifers, and that selling these bulls can be a "hassle."

As a result, says Donald, there will be no more ETs done on the Bollinger farm "until a heifer calf can be guaranteed." Along with the expense of the procedure, the Bollingers stated the ordeal could be "hard on cows" and getting them bred back could be difficult.

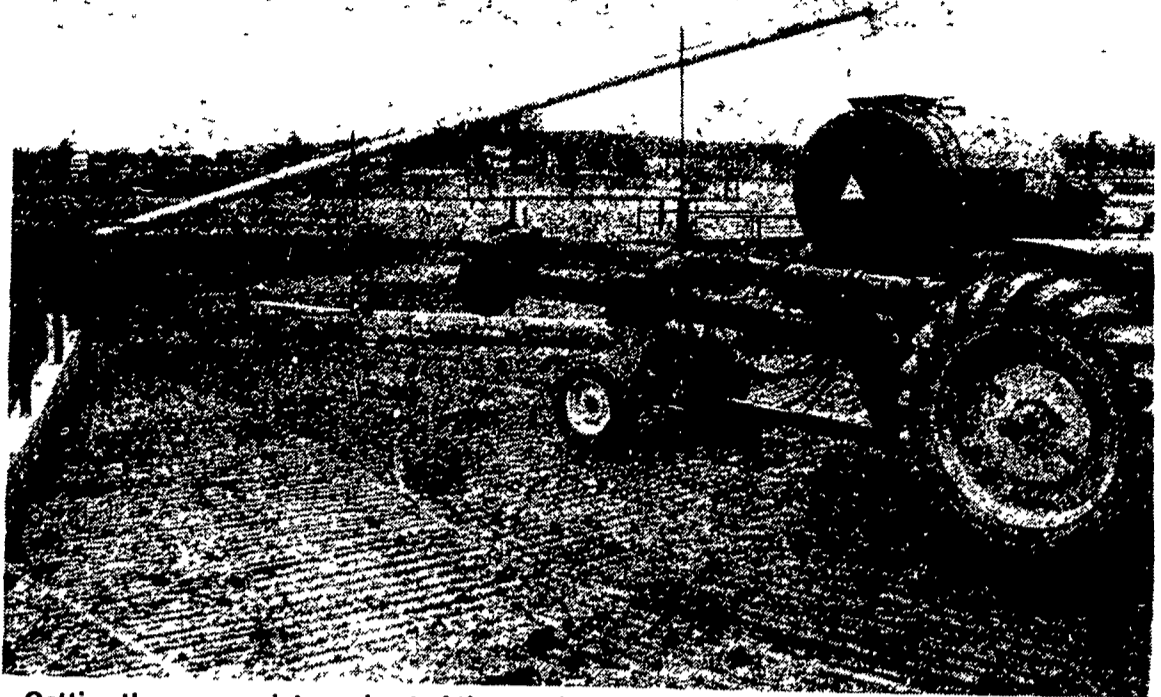
Any reproduction delays would mean a setback in genetic progress in the herd, but more importantly, it could mean a lag in milk production — the mainstay of the operation. Since the Bollinger rolling herd average hasn't been below the 20,000 pound mark since 1977, any drop would be a step backward.

The Bollingers contribute the past four years of top production to their feeding program; and the "cornerstone" of the feeding program is testing.

"Our forages are tested every two weeks," explains Donald, "and we are given a new ration every two weeks." These rations are made up for each age group of cattle on the farm, including young stock and dry cows.

Another factor in their top production records is the efficient mastitis control in their milking string. But this was not always the case, Donald recalls.

He explains how the herd developed a severe outbreak of mastitis in 1975, two years after the Willow Maple milking string was introduced to a total mix ration from Agri-King.



Getting the manure into and out of the pond is accomplished with this Husky pump. It carries the manure from a holding pit to the pond, agitates it, and then loads it into the manure wagon when it's time to spread.

"Our average production had shot up to 13,000 pounds," remembers Donald, "and that's when we started having problems."

"We changed the milkers, the pulsators, and still we had the mastitis. Finally, we sampled each cow's four quarters and sent the samples to Dr. Burleigh Anderson, a veterinarian from Loysville, Perry County."

What he found was a 10 percent coliform infection. The bacteria had taken hold while the cows were under the stress of increased production and improper milking equipment.

(Turn to Page D4)



700 SERIES Bobcat

741-Air Cooled Diesel
742-Liquid Cooled Gas
743-Liquid Cooled Diesel

Heavy Duty, 1300 lb. Operating Capacity

COMPARE THE FEATURES:

PERFORMANCE

1300 lb. capacity with dump reach up to 36". When you work a Bobcat, you'll feel the power at the wheels for maneuverability and stability throughout full load cycles

DURABILITY

Compare operating weight to load capacity, compare drive chain size, axle thickness, steel, welding, protection for hoses, engines, radiators and the superior Bob-Tach system for attachments inside and out Bobcats feature fine tuned engineering

SERVICABILITY

Tip up rollover protection structure for easier accessibility to hydrostatic components & steering linkage. 3/8" steel rear door on pin hinges makes routine maintenance a snap, bigger batteries and starters, dual element air cleaners.

SAFETY

Seat bar for additional operator safety, convenience and comfort. Rugged rollover protective structure construction, pedal locks; dual headlights; rear road and work lights; spark arrestor muffler.

Instrument Panel, Fuel Gauge, Voltmeter, Warning Lights, Ignition, Fuses

Operator Comfort, Adjustable Seat, Smooth Hydrostatic and Hydraulic Controls, Roomy Cab

Height 76 in. (1930 mm)

Non-Glare Charcoal Gray ROPS Finish For Better Visibility

Engines: 741 Deutz Air-Cooled, Diesel
742 Ford Water-Cooled, Gasoline
743 Kubota Water-Cooled, Diesel

Tip-Up Guard Meets ROPS & FOPS Requirements For SAE

Good Radiator Protection

Spark Arrestor Muffler

13-Gallon Fuel Tank

Isolated Hydraulic Reservoir Keeps Oil Clean

Durable, Pin-Type Hinges

3/8 Inch Steel Door

Vandal-Proof Latch

Long Life, Low Maintenance Battery

Easily Accessible Oil Drain

Bob-Tach For Fast Attachment Change

1300 lb Rated Capacity

Tires Standard (7.00x15) 54" Width
Flotation (10.00x16.5) 60" Width

8 Bolt Wheels

Welded Axle Housing

2-inch Diameter Axles

Auxiliary Hydraulics, Standard

*80 HD Drive Chain

Low-Noise Hydrostatic Pump

Hose Protection

Parking Brakes

Lift Arm Stop Available

Cold Weather Enclosures Available

Lights, Standard

Grab Handles

Seat Bar

Seat Belt

PRICE

CLARK

BOBCAT DEALERS:

Carlisle, PA
PETERMAN FARM EQUIPMENT
717-249-5338

Harrisburg, PA
HIGHWAY EQUIPMENT & SUPPLY CO.
717-564-3031

Myerstown, PA
SWOPE & BASHORE INC.
717-933-4138

Mill Hall, PA
DUNKLE & GRIEB
717-726-3115

Tunkhannock, PA
BARTRON FARM SUPPLY
717-836-3740

Chambersburg, PA
CLUGSTON IMPLEMENT INC.
717-263-4103

Honey Grove, PA
NORMAN D. CLARK & SON INC.
717-734-3682

Palm, PA
WENTZ FARM SUPPLIES INC.
215-679-7164

Slatington, PA
SCAT ENTERPRISES INC.
215-767-1711

Quarryville, PA
GRUMELL'S FARM SERV.
717-786-7318

Drums, PA
HIGHWAY EQUIPMENT & SUPPLY CO.
717-788-1127

Martinsburg, PA
BURCHFIELD'S INC.
814-793-2194

Centre Hall, PA
DUNKLE & GRIEB
814-364-9109

Collegeville, PA
MID-ATLANTIC EQUIP.
215-489-1400

Airville, Pa.
AIRVILLE EQUIP., INC.
717-862-3358



BOBCAT... #1
13 Models Up To 3700 Pound Capacity