

FARM EQUIPMENT

FARM EQUIPMENT

FARM EQUIPMENT

FARM EQUIPMENT

FARM EQUIPMENT

FARM EQUIPMENT

FARM EQUIPMENT

TOTAL MANAGEMENT MAKES THE DIFFERENCE!

The AG-BAG Sealed Storage System works with you as part of the total management program which can cut feed costs...improve nutrition...and increase your production and profits.

I want to know more about the Ag-Bag System

Mail To: **AMERICAN AG-BAG INC.**
50 E. 28th Division Highway
Lititz, Pa. 17543

NAME _____

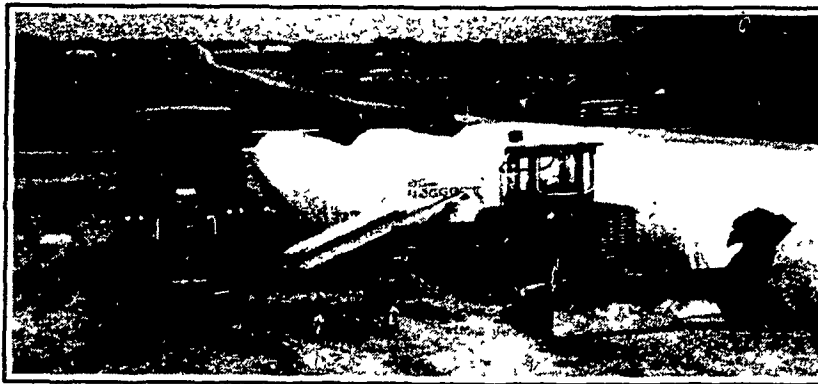
ADDRESS _____

CITY _____

STATE _____ ZIP _____

PHONE _____

AG-BAG THE AFFORDABLE SYSTEM



AMERICAN AG-BAG INC. FORAGE SYSTEMS

50 E. 28th Division Highway
Lititz, Pa. 17543 Rt. 322 & 501 in Brickerville
Lancaster County, 717-627-3665

Exclusive Dealer For Pennsylvania, New Jersey, Maryland, Delaware, Virginia, West Virginia Note: We Need Part Time & Full Time Salesmen For These Areas

AG-BAG INFORMATION MEETING

To Be Held At The Lititz Office
WEDNESDAY, JAN. 20, 1982
at 7:30 P.M.

CUSTOM BAGGING AVAILABLE
CALL COLLECT: 717-627-3665

FEATURES

- ALL HYDRAULIC OPERATION
- SELF POWERED UNITS AVAILABLE
- EASILY TRANSPORTABLE

Leasing & Bank Financing Available

Field Queen	SALES, SERVICE	Hesston
Forage	&	Farm
Harvesters	PARTS	Equipment

See The New Number 1's...
IH 5088 & 5288 TRACTORS ON DISPLAY AT OUR DEALERSHIP!
SPECIAL REBATE AVAILABLE TIL JAN. 31, 1982

ANNOUNCING WAIVER OF FINANCE!

- ★ **WAIVER OF FINANCE TO 3/1/82 ON THESE TRACTORS IN STOCK!**
- 1086 Rental • 3788, 3688 & 5288 Diesels
- (2) 584's At Old Price! • 5088 & 3288 Diesels

BIG, BIG SAVINGS AVAILABLE TO CASH BUYERS -
Call Us For Details!

TILLAGE:

735 Vari-Width Plow, 5 Bottom
730 Vari-Width Plow, 5 Bottom
145 3 & 4-Bottom 18" Roll-over, Auto Reset
496 Disc Harrow, 19'1", 9" Spacing (New Model)
501 Disc Harrow, 12'5" - Old Price!
315 Packer Mulcher, 20' Folding, Old Price! (1 left)
415 Packer Mulcher, 13', 12' & 10'
5513 13' 3 Pt. Chisel (1 left)
4500 Field Cult., 12' to 21' Folding
5100 Grain Drill, 16x7 Combination
5100 Grain Drill, 16x7 Plain
5100 Grain Drill, 18x7 Plain

SPRAYING EQUIPMENT:

300 Gal. Poly Tank John Blue Trailing Sprayer
John Blue 4-Ton Trailing Spreader with Hyd. Brakes - \$3525!

MISCELLANEOUS:

35 Hyd. Rake - Old Price!
2250, 2350 & 2450 Loaders
1250 Grinder Mixer
1350 Grinder Mixer
530, 540, 550, 560 & 575 spreaders

Dunham Folding Packers in stock - 23 Ft. & 25 Ft.

MORE WAIVER OF FINANCE...

- To 9/1/82 on New & Used Combines Plus \$7,000 Preferred Customer Rebate on Model 1420 Combine
- To 5/1/82 on Planting, Seeding & Cultivating Equipment
- To 3/1/82 on Soil Preparation Equip.
- To 5/1/82 on Hay Equipment
- To 9/1/82 on Forage Equipment
- To 3/1/82 on Materials Handling
- ★ Warranty Period starts on Waiver Date!

HARVESTING EQUIPMENT

Waiver of finance till May 1, 1982
SF Windrowers
Mower Conditioners
Square Balers
Round Balers
Rakes
Ag Mowers
Forage Harvesters

G-1000 JOHN BLUE TRACTOR
With 1-Row Cultivator - Demo
\$3800

No. 14 5-Shank Auto-Reset
SUB-SOILER
2 In Stock...Waiver to March 1, 1982
• IH No. 10 7-Shank & 5-Shank Models Also In Stock

ATHENS DISC HARROWS
In Stock - Ready For Delivery
• Model 131 11'6" Flex Disc
• Model 131 12'5"
• Model 90B 15' Rock Flex

IH 5000 DIESEL WINDROWER
• With 12 Ft. Head
MUST SELL! MAKE AN OFFER!!
• Waiver till May 1, 1982.

ERB & HENRY EQUIP., INC.
New Berlinville, PA. 19545



INTERNATIONAL AGRICULTURAL EQUIPMENT



We're An "XL" Dealer!

Ph: (215) 367-2169
WINTER HOURS:
Daily 7 to 5
Sat. 7 to 1

PART SMART

Lombardini Diesel for sale, 2000 hours, 21 horsepower, like new Call 717-656-9605

For Sale - Brady Multi-crop chopper, post hole digger, Massey Ferguson corn picker, Allis Chalmers Combine, Reasonable. Call 717-634-3222.

IH 710 5 btm. plow, good condition. 717-653-5020

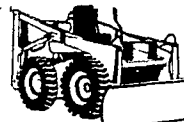
KABOTA Mod. L 245 DT, 4WD, with Mod. L1717 Loader, Cat 1 3 Pt. hitch with Woods RM 59 rear mower. One owner, low hours, \$8,000 buys all. 6 ton 2 axle trailer available for \$2,000.00 302-239-2735

Ford 145 ROLLOVER (2-Way) Plow 4x8" 3 pt \$2,375 301-845-4561

MF baler w/thrower, late model Call 717-865-6794

Elam Stoltzfus 2 bottom plow, automatic reset 717-768-8359

NI loader, good shape, universal mount, came off of 4020 JD \$495. 717-792-1366



SCHAEFFERSTOWN EQUIPMENT

SCHAEFFERSTOWN, PA

1/2 Mile N. of Schaefferstown on Rt. 419
Phone 717-949-6529

ALL MACHINES REPAIRED AS NEEDED - CLEANED & PAINTED.

WE BUY USED EQUIPMENT

WE ARE A DEALER FOR CUSTOM TRAILERS

BACKHOE LOADERS

Case 580B 1975 w/cab \$15,500
Case 580B \$11,500
JD 400, excell. cond., overhauled \$9,000

CRAWLER DOZERS

Cat D9-19A Series w/Ripper \$21,500
Cat D8 13A Series Hyd. \$11,500
Cat D8 46A Series, real clean \$42,000
Cat D4 D 40A Good \$11,500
Cat D8 2U Cable \$8500
Cat D6, hyd. \$6500
Letourneau pull pan for D8 \$1600
JD 350 6-way angle Blade New Undercarriage \$9200
JD 1010 Dsl. w/winch \$5000

CRAWLER LOADERS

JD 450 w/93 hoe \$14,500
JD 450 \$9500
JD 450 w/ROPS, good \$12,000
JD 440 Dsl. \$6500
Cat 955H 60A \$12,500
Cat 933G, good \$9,500
Cat 933 \$6500
IHC 4340 w/ripper \$7200
IH 340 Dsl. 4 & 1 Bucket w/Ripper \$7000
IHC TD9 \$8200
AC HD5 \$3450
AC HD6G \$4000
runs and operates Case 350 \$7500
Case 450, good \$9500
Case 750, good \$10,000

SKID STEER LOADERS

JD 24 \$4800

GRADERS

Huber Wargo Dsl w/Cab \$5000
Galion 118 Dsl. w/cab \$6500

WHEEL LOADERS

Hough 70, 4x4 3 to 4 yd. good \$14,500
Hough 30, 1 yd. good \$5200
Nelson 4x4 \$3750

TRAILERS

1979 CMI Folding Hydr. Gooseneck 30 ton \$29,500
9 Ton Tag-Along \$1400
9 Ton Tag-Along \$2000
9 Ton Tag-Along new heavy duty \$5100
12 Ton Tag-Along \$2000
12 Ton Tag-Along \$2750
15 Ton Gooseneck, S.A. \$3500
25 Ton Lacross T/A \$5500
Approx. 1 1/2 Ton Tandem Axle Tilt Trailer w/winch \$1200
2 Ton Tilt Trailer \$500
1 Ton Roller Trailer \$800
New Trailers - All sizes and prices Call

TRUCKS

1965 Int. Dump S.A. \$2500
1965 Int. Dump S.A. \$3200
1956 White 18' bed S.A. \$1800
1967 GMC 3/4 ton w/utility box \$800
1970 Chevy Dump S.A. \$3000
1975 Plymouth Fury 6 cyl. \$2000
1973 Buick Riviera \$1500
1969 Ford sgl. axle dump, good \$6900
1965 Ford 3/4 Ton \$450
Int. Tandem Axle Dump \$4250
Dodge Van 14' \$4,500

AIR COMPRESSORS

LeRoy 105 \$3500
Jaeger 105 \$2000
Chicago Pneumatic 125, O.H. \$3000

ROLLERS

Fordlane Paver, ex. cond. \$3100
3 Ton Tandem \$2000
1 Ton Roller \$2000
1 to 3 ton Virbra-Pac \$3400
1 to 3 ton Virbra-Pac \$2800
3 to 5 ton Huber Tandem \$5500

MISCELLANEOUS

AC Motorized Pan #260 \$3,000
MF 180 Tractor \$6850
Ford Corn Planter 2 Row 3 pt. \$450
16' Dump Box \$1250
16' Dump Box good \$2450
5 ft. Rotary Cutter new \$495
Pavement Breaker 90 lb. \$350
Assorted Loader Buckets
6 ft. Angle Scraper Blade 3 pt. \$175
Myers Snow Plows Electric/Hydraulic/Angle \$1000
17' Dico Block/Unloader, Complete \$2500
Davis Trencher 300+ \$3000
Ditch Witch Model R65 Loaded \$9500