

# Livestock market and auction news

## Leesport Auction

Wednesday, December 2  
Report supplied by PDA

**CATTLE** 281. Compared with last Wednesday's market, slaughter cows steady to strong. Few Choice 1000-1200 lbs. slaughter steers 63.00-64.85, Good & Choice 1275-1475 lbs. holsteins 57.25-59.10, Good 58.00-62.00, Standard 54.00-57.00. Choice 875-1170 lbs. slaughter heifers 57.25-60.50, few to 64.00, few Good 55.25-56.10. Utility & Commercial slaughter cows 40.00-53.35, few to 44.00, Cutters 36.00-41.00, few to 42.35, Canner & Low Cutter 33.25-35.85, Shells down to 26.35. Good slaughter bullocks 59.00-64.60, few Standard 48.00-50.75. Yield Grade #1 1300-1900 lbs. slaughter bulls 54.50-58.60; few yield grader #2 950-1220 lbs. 49.25-54.75. Medium Frame #1 400-700 lbs. feeder steers 51.00-59.00, few Large Frame #2 500-800 lbs. 38.50-47.00, Small Frame #1 365-525 lbs. 41.50-48.50; few Medium Frame #1 525-620 lbs. feeder heifers 37.50-39.50, one lot Large Frame #1 465 lbs. at 46.50; few Medium Frame #1 470-775 lbs. feeder bulls 43.00-50.00, one lot Large Frame #2 375 lbs. at 43.00.

**CALVES** 147. Few Choice vealers 80.00-85.00, few Good 67.00-77.00, few Standard & Good 110-130 lbs. 58.00-62.00, 90-110 lbs. 50.00-57.00, 70-85 lbs. 45.00-52.00, Utility 70-100 lbs. 30.00-45.00. Farm calves, holstein bulls 90-135 lbs. 57.00-72.00; holstein heifers 90-160 lbs. 80.00-101.00, few down to 59.00.

**HOGS** 345. Barrows & gilts 75 cents to \$1 higher. US No. 1-2 200-235 lbs. barrows & gilts 45.75-46.75, No. 1-3 200-270 lbs. 45.00-46.10, one lot 46.85, few No. 2-3 215-270 lbs. 42.75-43.25. US No. 1-3 300-560 lbs.

sows 40.00-43.25, few 490-715 lbs. 38.00-41.00, Utility 300-450 lbs. 36.00-40.00. Boars 34.00-35.50.

**FEEDER PIGS** 153. US No. 1-3 30-70 lbs. feeder pigs 60.00-71.00, few down to 50.00 cwt., No. 1-3 115-180 lbs. 46.50, one lot Utility 40 lbs. 45.00 cwt.

**SHEEP** 27. Few Choice 25-50 lbs. woolled slaughter lambs 90.00-112.00, few Choice 60-90 lbs. 55.00-61.00, few to 79.00. Few Slaughter sheep 15.00-24.00.

**GOATS** 9. 24.00-34.00, one at 48.00 per head.

## Belleville Livestock Auction

Belleville, Pa.

Wednesday, December 2

Report supplied by Auction

**CATTLE** 110: Utility & Commercial slaughter cows 35.35-38.35, couple 40.10 and 43.10, Cutters 33.50-35.50, Canner & Low Cutter 28.25-33.00, Shells down to 13.50. Yield Grade #1 1315-2210 lbs. slaughter bulls 44.25-48.75.

**CALVES** 190: Standard & Good vealers 70-100 lbs. 48.00-61.00. Farm calves, holstein bulls 60.00-101.00, mostly 75.00-98.00.

**HOGS** 146: US No. 1-2 200-235 lbs. barrows & gilts 45.50-46.10, No. 1-3 190-260 lbs. 43.00-45.50. US No. 1-3 280-445 lbs. sows 46.50-54.50. Boars 32.50-34.00.

**FEEDER PIGS** 201: US No. 1-3 20-30 lbs. feeder pigs 11.00-20.00 per head, No. 1-3 35-50 lbs. 19.00-33.00, No. 1-3 50-75 lbs. 30.00-43.00 per head.

**SHEEP** 3: Not enough of any one grade to establish a market.

**GOATS** 12: 20.00-47.00 per head. (Holstein Dairy Cows 550.00-1520.00 per head.)

## Morrison Cove Auction

Martinsburg, Pa.

Monday, November 30

Report supplied by auction

**CATTLE** 120. Good slaughter steers 56.50-58.25, Standard 54-56.50, Utility 51.25-53.60. Good slaughter heifers 55.60-57.25, Standard 54.50-55.50, Utility 48.50-53.50. Utility & Commercial slaughter cows 41.50-43.25, Cutters 39.50-41.25, Canner & Low Cutters 35.00-38.50, Shells down to 30. Yield Grade #2, slaughter bulls 51.50-53.50. Medium Feeder steers 45.00-47. Good feeder heifers 48.50-50.50, Medium 44-47.50. Good to Medium feeder bulls 44-49.50.

**CALVES** 292. Prime vealers 95.00-101, Choice 85.00-94, Good 75.00-83, Standard and Good 110-130 lbs. 60-67.50, 90-110 lbs. 50-58.50, 70-90 lbs. 45-51.50. Farm Calves: Hol. Bulls 90-130 lbs. 95.00-108; Hol. Heifers 90-130 lbs. 95.00-125.

**HOGS** 193. US No. 1-2 barrows and gilts 47.25-47.75, No. 1-3 46.25-47.25, No. 2-3 45-45.75, No. 2-4 44.50-45, No. 1-3 250-300 lbs. 44-44.50. US No. 1-3 sows 41.00-43, No. 2-3 39-40.75. Boars 32.00-36.

**FEEDER PIGS** 36. US No. 1-3 25-40 lbs. feeder pigs 16.00-24 per head.

**SHEEP** 0.

## Weekly Summary

Friday, Dec. 4

Report supplied by PDA

**CATTLE**: 4757. Compared with 3580 head last week, and 4886 head a year ago. Compared with last week's market: Slaughter steers mostly steady to 1.00 higher. Sl. heifers steady to 2.00 lower; Sl.

cows steady to 1.00 lower, spots 2.00 lower; Sl. bullocks & bulls small supply 1.00-2.00 higher. Sl. steers: High Choice & Prime No. 3-4; 63.50-66.00; Choice No. 2-4, 61.00-64.75; few Good 56.00-61.50; Standard 49.00-56.00. Sl. heifers: Choice 58.00-60.75, few 62.25; Good 55.00-57.50; few Standard 47.00-55.00. Sl. cows: Utility & Commercial 38.00-42.00, few 43.25; Cutters 34.00-39.00, few to 41.00; Canner & L. Cutter 28.00-37.00, few down to 25.00; Shells down to 20.00. Sl. bullocks: few Choice 59.00-63.75; Good 52.00-59.50; few Standard 48.00-53.75. Sl. bulls: Yield Grade No. 1, 1000-2550 lbs. 47.00-58.00, few down to 43.00; Yield Grade No. 2, 900-1550 lbs. 45.00-50.00.

**FEEDER CATTLE**: Steers, Medium Frame No. 1, 300-700 lbs. 51.00-59.00. Heifers, Medium Frame No. 1, 300-600 lbs. 37.50-47.50. Bulls, Medium Frame No. 1, 400-775 lbs. 40.00-52.00, few down to 32.00.

**CALVES**: 4802. Compared with 3094 head last week and 4206 head a year ago. Vealers unevenly steady. Few Prime 95.00-121.00; Choice 85.00-100.00; Good 65.00-85.00; few Standard 110-130 lbs. 55.00-68.00; 90-110 lbs. 47.00-60.00; 65-90 lbs. 30.00-45.00; Utility 60-110 lbs. 20.00-40.00.

**FARM CALVES**: Hol. Bulls 80-125 lbs. 50.00-108.00; mostly 60.00-90.00; Hol. Heifers 85-150 lbs. 50.00-127.50, mostly 70.00-110.00.

**HOGS**: 6451. Compared with 6555 head last week and 6233 head a year ago. Barrows and gilts mostly steady to 1.50 lower. US No. 1-2 200-240 lbs. 44.50-46.75, few 47.75; No. 1-3 250 lbs. 43.00-45.00; No. 2-3 200-275

lbs. 40.75-43.00; No. 1-3 140-190 lbs. 39.00-43.00; Sows uneven; US No. 1-3 300-600 lbs. 39.00-43.00; No. 2-3 300-700 lbs. 37.00-40.75. Boars 30.00-37.50.

**FEEDER PIGS** 860. Compared with 1125 head last week and 931 a year ago. Feeder pigs 2.00-5.00 lower. US No. 1-3 20-35 lbs. 11.00-20.00 per head; No. 1-3 35-50 lbs. 19.00-28.00; No. 1-3 50-75 lbs. 25.00-43.00 per head.

**GRADED FEEDER PIGS**: 2151. Compared with 2659 head last week, and 2567 head a year ago. All sales by CWT. Feeder Pigs mostly steady to 8.00 lower. US No. 1-2 25-40 lbs. 75.00-95.00, 40-50 lbs. 70.00-86.50, 50-60 lbs. 64.00-85.00, 60-70 lbs. 59.00-68.50, US No. 2-3 30-40 lbs. 62.00-85.00; 40-60 lbs. 47.00-62.00.

**SHEEP**: 490. Compared with 607 head last week and 346 head a year ago. Woolled sl. lambs mostly steady to strong. Choice 60-105 lbs. 45.00-61.00, mostly 45.00-58.00; Good 60-115 lbs. 38.00-49.50; Sl. ewes: 10.00-29.00 with few to 32.00.

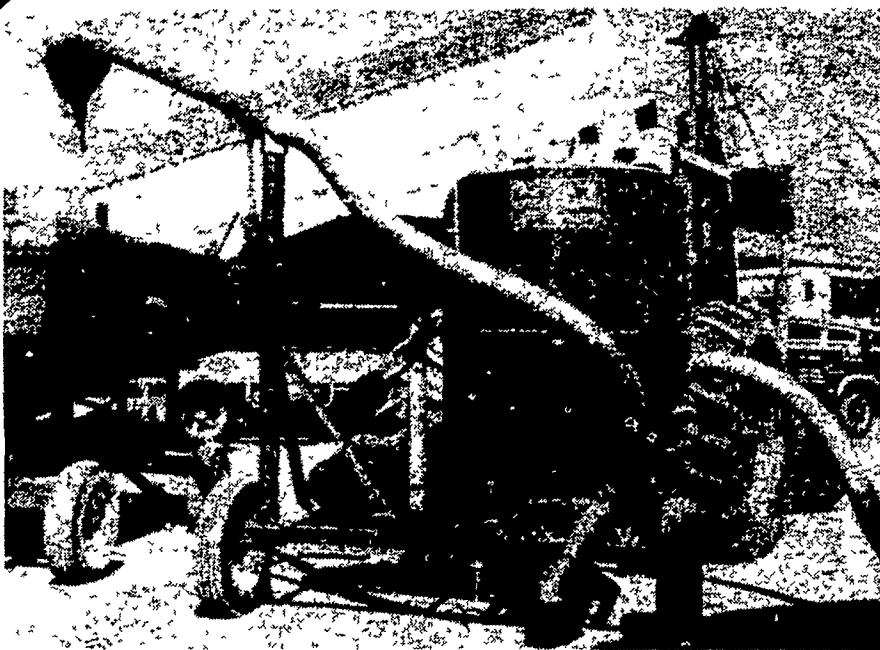


**SAFETY  
HEALTH**

## FARMERS PROTECT YOURSELF

- NO DUST IN LUNGS • NO SHOVELING OF GRAIN & BACK ACHES •
- NO MANGELING OF LIMBS • NO CRACKING OF GRAIN •

Walinga Grain Vacuum - The Big Green Machine with the 4 inch Flex Pipe



Loading Position 4 Inch Pipe — And — In Transport with 5" Pipe

SOLD BY:



Sales and Service  
1248 E. Newport Rd.  
Lititz, PA  
Phone: 717-626-4762

For More Information on  
FREE Demonstrations or Dealerships Contact:  
Jack Conrad or Dick Shultz

- ★ 33-40 Tonnes Per Hour or 1200 to 1500 Bushel Per Hour Wheat
- ★ 33-40 Tonnes Per Hour or 1600 to 2000 Bushel Per Hour Barley
- ★ 33-50 Tonnes Per Hour or 1600 to 1800 Bushel Per Hour Wheat (Same machine with 5" piping)

**WALINGA GRAIN VACUUM ALSO  
AVAILABLE IN DIESEL OR  
GAS MODELS**