

## Franklin Co. 4-H horse club earns honors

CHAMBERSBURG — The Franklin County 4-H horse and pony club was named high point winner on the Maryland-Pennsylvania horse show circuit at the 28th annual banquet, November 14, in Hagerstown, Md.

The club is comprised of members from Greencastle, Waynesboro, and Chambersburg.

A total of 19 awards were given to the 4-H members who accumulated the most points during the 25 horse shows which were held this past summer.

An engraved silver chip-dip dish was presented to each champion and a silver cup to each reserve champion.

Kathy Brown of Waynesboro received reserve champion awards in green hunter, junior hunter and English equitation B in addition to champion in youth English pleasure horse and pony B with her horse, K-Twice Saratoga.

Rodney Garling, Chambersburg, received champion pleasure pony A and reserve champion short stirrup equitation with Black Cloud.

Rhonda Garling, Chambersburg, received short stirrup equitation

with Star Sioux-H.

Jamie Ott, Scotland, received champion pleasure pony B with Stormy Lad.

Tony Ott, Scotland, earned champion youth western pleasure horse and pony B with Social Image.

Beth Carty, Chambersburg, walked away with champion in youth western pleasure horse and pony A and champion in stock seat equitation A with Lad's Little Bits.

Angie Bailey received reserve champion in youth western pleasure horse and pony A with Diamond Leo Boy.

Mike Carty, Chambersburg, earned reserve champion stock seat equitation B.

Jennifer and Jackie DeShong, Greencastle, tied for reserve champion in youth English pleasure horse and pony A with Shadow Play. Jackie DeShong also won champion English equitation A.

Lori Weachter, Chambersburg, earned champion in stock seat equitation B and reserve champion in youth showmanship with Money Bait.



Members of the Franklin County 4-H Horse and Pony Club display the awards they received at the Maryland-Pennsylvania Horse Circuit awards Banquet, November 14. They are: back row (Left to right) Kathy Brown, Tony Ott, Jamie Ott, Mike Carty, and Lori Weachter; front row (Left to right) Angie Bailey, Rodney Garling, Rhonda Garling, Kristi Weachter, Beth Carty.

## New fungicide looks promising on potatoes

NEWARK, Del. — For a number of years Delaware potato growers have been experiencing a two to five percent yield loss to a disease complex called pink rot.

In 1979 University of Delaware Extension plant pathologist Bob Mulrooney began testing a new fungicide, Ridomil, for its effectiveness against this disease.

Results so far are very promising. Last summer Ridomil gave significant control of pink rot in all treatments as compared to an unsprayed control. This confirms previous results.

Mulrooney plans to repeat the

tests again next year. But based on his findings so far, efforts are under way to help the manufacturers of the product get it labeled for use on potatoes. Right now the fungicide is used primarily on tobacco.

In the past, Extension specialists and researchers at the University of Delaware Agricultural Experiment Station have tried to identify potato varieties that are resistant to pink rot, but so far this method of control has not been very promising. Another control approach being studied is the use of cover crops and crop rotations to

discourage a build-up of the disease in soils used for potato production.

Pink rot of Irish potatoes is caused by several species of water mold. Wet weather near harvest and poorly drained soils are known to favor development of the disease, which has plagued Delaware potato growers since the mid-1960s.

Pink rot can cause a breakdown of potatoes in the field, resulting in direct field loss. It may also cause apparently sound potatoes to rot in transit, resulting in rejection of whole truckloads of the crop.

In last year's trials at the University's experimental farm in Newark, the variety 'Superior' was sprayed with several different rates of Ridomil 2E. The fungicide gave significant control of pink rot in all treatments versus the unsprayed control, reports

Mulrooney. He will repeat the tests again next year. By then he should have considerable data to support labeling of this material for use on potatoes to control pink rot, thus helping local growers solve a costly production problem.



**READ  
LANCASTER FARMING  
FOR COMPLETE  
AND UP-TO-DATE  
MARKET REPORTS**

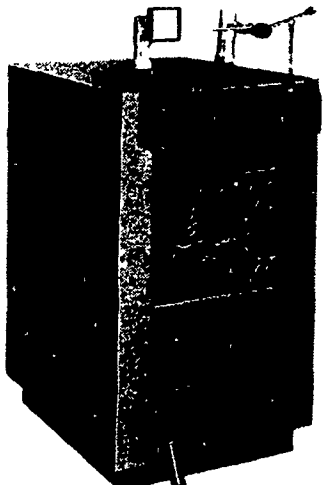
### TIMBER EZE

## Ingenious Wood/Coal Boilers

NOW AVAILABLE...

WOOD AND COAL BURNING BOILERS DESIGNED TO TIE INTO ANY HOT WATER HEATING SYSTEM

This means you can now heat your entire home with wood or coal and since this is an add-on boiler, you can use your present energy source — gas, electric, oil or solar, as desired, when not using wood or coal — the less costly fuels during frigid weather. The Timber-Eze boilers are engineered using space age technology for squeezing maximum BTU's of energy from solid fuels utilized in the heat chamber.



• Non-jamming intermeshing heavy duty cast iron grates  
• Automatic dual draft system  
• Designed and built to comply with the ASME Code  
• Firebrick lined  
• Extremely heavy construction  
• Insulated jacket  
• 12 and 19 gallon reservoir  
• 1 1/2" Fiberglass insulation 3 sides.  
• Wine color finish

**BE INDEPENDENT OF UTILITY INCREASES — BUILD UP A SAVINGS ACCOUNT BY OWNING A TIMBER EZE**

### A.R. FLAUD SALES

Timbereze Distributor & Sales

RD #2, Rock Road, Honey Brook, Pa. 19344

For More Information Call 215-273-3211

DEALER INQUIRIES WELCOME

# KATOLIGHT!

THE PIONEER IN BRUSHLESS P.T.O. ALTERNATORS!! YEARS OF EXPERIENCE HAVE GONE INTO THE ADVANCED DESIGN OF THESE POWERFUL BRUSHLESS ALTERNATORS. THE RESULT IS THE UNIQUE COMBINATION OF...

★ 300% Surge Capacity: For Superior motor starting capabilities

★ Totally Brushless Design: For greater reliability and more positive voltage build-up after long periods of idleness



24 HR. EMERGENCY SERVICE BY RADIO DISPATCHED SERVICE PERSONNEL  
SOME UNITS STILL AVAILABLE AT EARLY 1980 PRICES

#### Model Selection Chart

Model No.	Watts	Momentary Surge Watts	Minimum Required HP	Volts	C.B. Amps	Phase	Wire	Approximate Wt. Net Lbs.	Ship Lbs.
15LR1	15,000	45,000	25	120/240	60	1	3	425	490
25LR1	25,000	75,000	40	120/240	100	1	3	475	500
35LR1	35,000	105,000	55	120/240	150	1	3	580	600
45LR1	45,000	135,000	70	120/240	175	1	3	670	730
55LR1	55,000	165,000	86	120/240	225	1	3	730	750
85LR1	85,000	255,000	130	120/240	350	1	3	795	860

Distributor for DE, MD, NJ & PA

### MARTIN MACHINERY

P.O. Box 35, Martindale, Pa. 17549

215-445-4800 or 267-7771