

# Berks Farm-City tours open barn doors for urban neighbors

**BY LAUREL SCHAEFFER**  
Staff Correspondent  
BERNVILLE — Several Berks County farmers participated in the annual Farm-City festivities last week and this past weekend.

As part of the Berks County Farmers' Association 8th annual tour, ten farms opened their doors to the public on November 21 and 22 hosting their urban neighbors and providing tours of their operations with the help of county 4-H'ers and FFA members serving as guides. Included in the tours were several dairy farms, a mushroom farm, poultry and swine operation, meat market, farm equipment business, orchard, and a general farm dating back to the 1700s.

The Berks County Pomona Grange also became involved with Farm-City week this year by taking members of the County Chamber of Commerce to breakfast November 18 to several

farms, giving them the opportunity to see what work is involved on farms. Participating in this program were: Kenneth and Kermit Schlegel, Fleetwood; George and Harold Schuler, Fleetwood; Robert Heffner, Fleetwood; Dennis Cooper, Lenhartsville; Roy Christman, Hamburg; Robert Sattazahn, Womelsdorf; and Clarence Sattazahn, Womelsdorf.

Ernest Miller, Master Berks Pomona Grange called the program "successful", adding the participating members of the Chamber of Commerce were impressed and amazed with the activities conducted on these farms, especially since several participants were never on a farm before.

Farms participating on the weekend tours included:

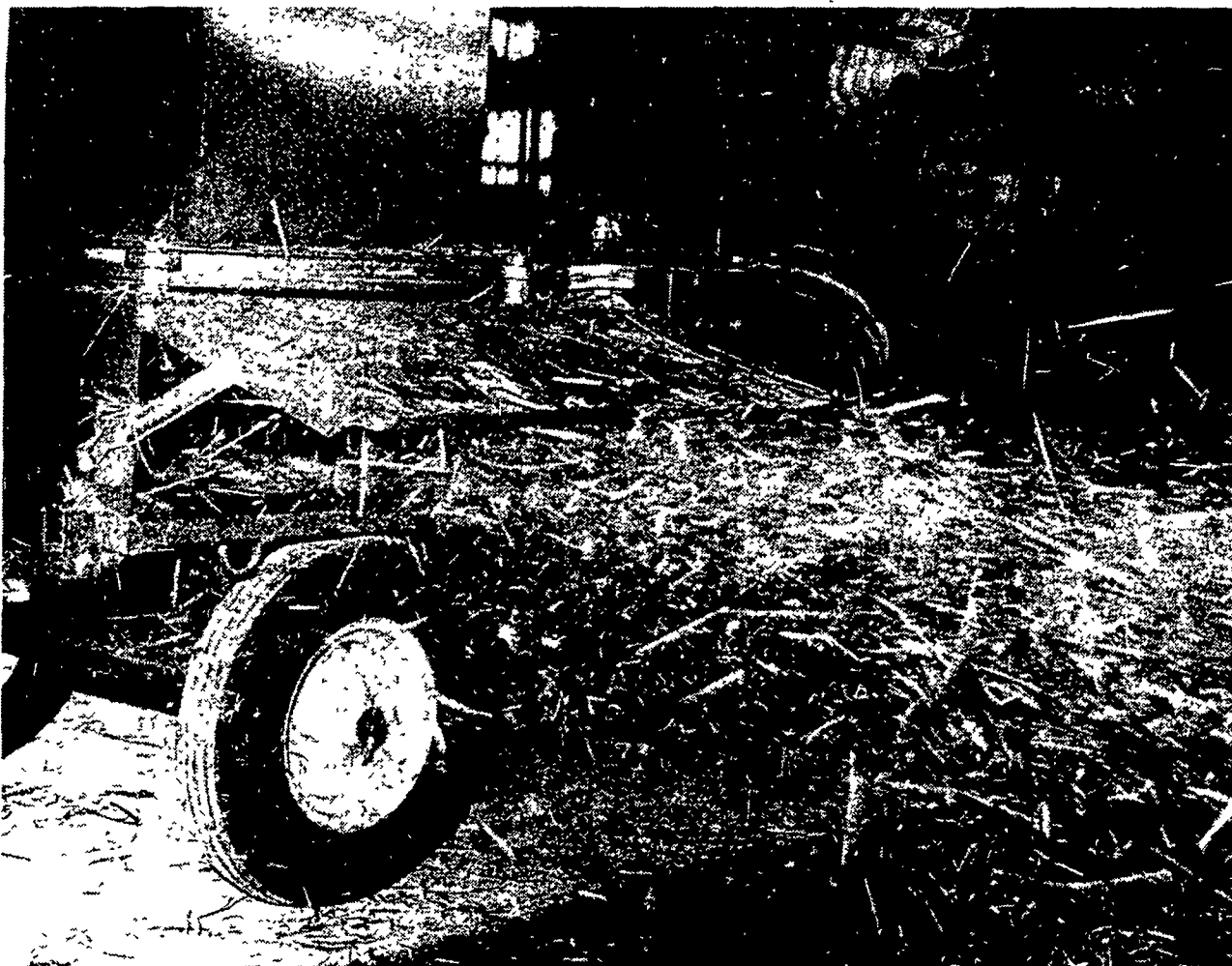
—Way-Har Farms, Bernville.

Guests to this dairy operation,

(Turn to Page A18)



Berks County's Alternate Dairy Princess Lori Leshar was an active participant in last weekend's Berks County Farm-City tours, distributing literature and her favorite milk refreshments to visitors.



## GET YOUR CHOPPER'S WORTH FROM THIS TOUGH-BUILT RED BEDDING MACHINE

Sure times are tough. With high interest rates and the squeeze on farm profits, every piece of farm equipment you buy must be efficient. You can't afford wasted time, energy and out-of-pocket costs.

The tough-built red bedding chopper from US Farm Systems of Pennsylvania meets your needs. This practical machine fluffs bales of straw, corn fodder and old hay into liquid-absorbent bedding that leaves no more long stems to clog your liquid manure system. A special design of spiral-set knives gives you the extra cutting ability not usually found in machines of this type.

So, get your chopper's worth from this tough-built red bedding chopper. Dealers across the states have machines in stock ready for delivery. For the dealer near you, write to **US Farm Systems** of Pennsylvania, 3053 Barren Road, Oxford, PA 19363. Or phone: (301) 398-2948.

Also ask about:

- Bull-Strong Manure Pumps
- Simplicity Manure Tankers
- Easy-Unload Silage Carts

**US FARM SYSTEMS**  
of Pennsylvania  
Your Manure & Feed Equipment Dealer

**ELECTRICAL CONTRACTING AGRICULTURAL**  
RESIDENTIAL • INDUSTRIAL  
- 24 HOUR EMERGENCY SERVICE  
- STANDBY GENERATORS SALES & SERVICE  
- 40' BUCKET TRUCK  
- BLOWN CELLULOSE INSULATION

*Hawthorne Electric, Inc.*  
Since 1952  
**CALL (717) 653-2068**  
Rt. 230 W. Mount Joy, Pa. 17552

**THE FARMING GAME**

"THE GAME INVENTED ON THE SEAT OF A TRACTOR"

This new, fun game makes a  
A unique gift idea!

**LUMBERJACK LOGGING**

Highest Prices Paid for Standing Timber  
Also buying dead trees for firewood, large quantities.

**215-437-9967**  
after 6 p.m.