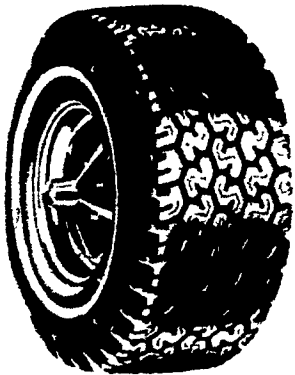




SNOW TIRE SPECIALS

POLYESTER SNOW TIRES

SIZE	SALE	FET
A78-13.....	'30.50	1.68
B78-13.....	'32.00	1.77
C78-14.....	'32.00	1.77
E78-14.....	'36.00	2.29
F78-14.....	'37.50	2.42
G78-14.....	'39.75	2.57
H78-14.....	'40.25	2.59
G78-15.....	'40.50	2.85
H78-15.....	'42.00	2.71
L78-15.....	'45.00	2.83
L78-15 Belted Snow ..	'55.00	2.83
600x15.....	'33.00	1.85



FREE MOUNTING AND BALANCING ON TIRES

RADIAL SNOW TIRES

SIZE	SALE	FET
AR78x13..P155/80-13	'47.00	1.74
BR78x13...P175/80-13	'49.00	2.06
CR78x13..P185/80-13	'49.00	1.87
CR78x14..P175/75-14	'50.00	2.13
DR78x14..P185/75-14	'51.50	2.29
ER78x14..P195/75-14	'52.00	2.35
FR78x14..P205/75-14	'53.00	2.54
HR78x14..P225/75-14	'58.50	2.93
FR78x15..P205/75-15	'53.50	2.60
GR78x15..P215/75-15	'58.00	2.78
HR78x15..P225/75-15	'60.00	2.98
LR78x15..P235/75-15	'64.50	3.41
155-15.....	'32.00	1.65
165-15.....	'33.00	1.86



All Season STEEL BELTED RADIAL WHITEWALLS

★ LEGAL ON SNOW EMERGENCY ROUTE FOR MUD & SNOW TIRES

SIZE	SALE	FET
AR78x13..P155/80-13	'40.50	1.51
BR78x13..P165/80-13	'45.00	1.68
CR78x13..P185/80-13	'49.00	1.95
DR78x14..P185/75-14	'51.00	2.20
ER78x14..P195/75-14	'52.00	2.23
FR78x14..P205/75-14	'53.00	2.34
GR78x14..P215/75-14	'55.50	2.49
FR78x15...P205/75-15	'53.00	2.46
GR78x15...P215/75-15	'55.75	2.62
HR78x15...P225/75-15	'59.95	2.79
LR78x15...P235/75-15	'64.75	2.95



Hours: Mon. and Fri.
7:30 to 9:00
Tues., Wed., Thurs.
7:30 to 5:00;
Closed Saturday



CLOSED THANKSGIVING and MONDAY, NOVEMBER 30 Thru WEDNESDAY, DEC. 2



HURST TIRE SERVICE

PHONE (717) 354 4931
1 Mile West of Blue Ball On Rt. 322

National Grange names winners

SPOKANE, Wash. — Kathleen Yappel, 15, of Northfield Center, Ohio is the Grand Award Winner of the 1981 National Grange Sewing Contest, the largest general sewing contest in the country. She was presented a check for \$1,000 by the grange and a \$500 scholarship from Simplicity Patterns during a Women's Recognition Banquet at the National Grange convention on Thursday, November 12.

Mrs. Mary Buffington of Chadds Fords, PA, Director of Women's Activities for the National Grange and Ilse Sloan, Design Director for Coats & Clark, Inc., announced the Grand Award Winners of the 1981 Needlework Contest. The winners are Mrs. Charles Minor, Jr., Hopewell, VA, (crochet or knit with mercerized cotton), Joyce Anderson, Moses Lake, WA, (crochet or knit with synthetic or blended yarns) and Rena Hudson, Pierpoint, Ohio (embroidery and crafts). Each winner received \$500 from Coats and Clark.

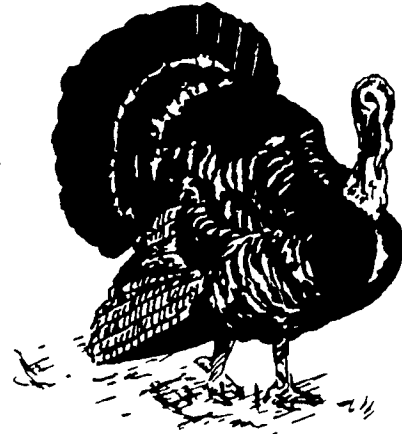
First place winners in the Stuffed Toy Contest were (ages 5-14) Regina Bailey, Pine Plains,

NY; (ages 15 - 21) Jennifer Anderson, Moses Lake, WA; (ages 22 & over) Juanita Davis, Corvallis, OR, and most original, Leshe Rivard, Gaines, MI.

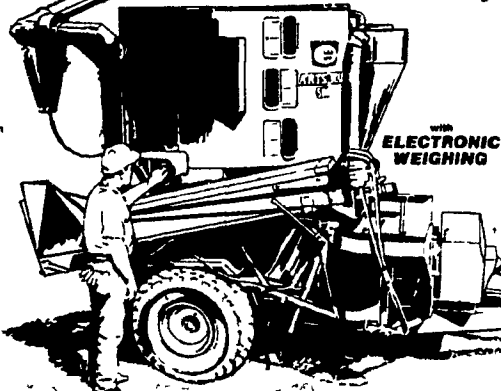
Joy Beate of Anderson, CA, and Director of Women's Activities for the California State Grange was selected Director of the Year.

Also announced during the Grange convention this week were

best of show winners in the art and photo contest. Winners in the art contest were, adults, Geneve Ballieul, Southwick, Massachusetts, and juniors, Michael Betler, Schnecksville, Pennsylvania. In the photo contest, adults, Eleanor Newcomb, Greenfield, Massachusetts, and juniors, Theresa Constantine, Kent, Washington.



grinds 42 bushels a minute,



makes 4 tons of feed fast! 500

ARTS-WAY 500

Our all-new Model 500 is bigger, stronger and faster to make your ration preparation easier and more efficient than ever before. **Big capacity** with a 150-bushel tank that mixes up to 4 full tons of feed in minutes! **Bigger all over** with a rugged new design from the frame up to mate with big tractors at 1000 rpm. Yet it has fewer moving parts than any other portable on the market! **Biggest hammermill** in the business 26 wide 20" in diameter with 48 hammers and 780 sq. in. of screen area. Grinds up to 42 bushels of shelled corn a minute! **Loaded with extra-value** convenience features including a hydraulic auger feeder as standard equipment. Gives you superior grinding and outstanding mixing to help you make the most cost efficient rations you've ever fed. **Weigh and save** with our optional electronic scale. You can weigh each ingredient into the mixer to end feed waste and get the right nutritional balance you want for best livestock performance.

ARTS-WAY 450 and Electronic Scale

For the highest return in your pork program weigh-grind mix your rations with the new Arts Way 450 and our famous Electronic Scale. Consider the Arts-Way advantages

- **Weigh & Save** — Scale lets you weigh each ingredient into the mixer accurately. No more feed waste from guesswork. And weighing helps assure the proper nutritional balance that gives you the best pig performance at lowest cost
- **Superior Grinding** for consistently better feed quality and outstanding mixing for real feed uniformity
- **Top Payoff:** Balanced rations uniformly ground and mixed mean better palatability and consistent consumption for better gains. Arts Way helps you get top return on your corn, hogs, labor and investment

Ask us for a demonstration!

AREA REPRESENTATIVE
DAVID D. DEITRICH PHONE:
Rte 5, Box 758 (703) 667-3787
Winchester, VA 22601 (703) 667-0363

GREENWOOD, DE Delridge Supply, Inc. 302-349-4327
SOMERSET, PA. Grove Equip. Sales 814-445-6306

WAYNESBORO, PA B Equipment, Inc. 717-762-3193
EASTON, PA Geo. V. Seiple & Sons 215-258-7146

JONESTOWN, PA Heisey Farm Equip. Inc. 717-865-4526
ROME, PA. Hinstead's Farm Center 717-744-2371

FREDERICK, MD Knott & Geisbert, Inc. 301-662-3800



ALPINE PLANT FOOD

ALPINE OFFERS A TOP QUALITY LIQUID PLANT FOOD AT ROCK BOTTOM PRICES.

- ★ Alpine minimizes expensive handling costs by utilizing farmer distributors.
- ★ Alpine eliminates expensive computer billing costs with cash accounts.
- ★ Alpine uses food grade ingredients for maximum availability and safety to plants.
- ★ Alpine is a neutral PH chlorine free plant food that will not rust equipment, freeze or settle out.
- ★ Alpine will deliver 9-18-9 for payment in Nov. for \$3.05 a gallon. Alfalfa plant food 3-18-18 delivered price \$3.35.

— Pennsylvania Distributors —

HAROLD WOLF
Centre Hall
814-364-1349

GARY REPLOGLE
Bedford
814-847-2851

JAMES LANDIS
East Greenville
215-679-2682

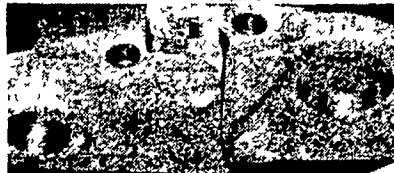
CLYDE BARTHOLOMEW
Orangeville
717-784-1779

RICHARD WILSON
Stewartstown
717-933-6101

AUTHORIZED DISTRIBUTOR



Featuring the exclusive 1 Loc Split-Master Link with sealed and lubricated chains

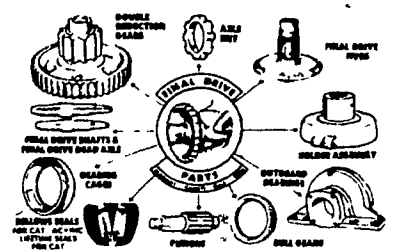


DISTRIBUTOR FOR



Bucket Teeth & Adaptors for loaders & backhoes
Cutting Edges & Grader Blades

FINAL DRIVE PARTS



UNDERCARRIAGE REBUILDING

Complete undercarriage rebuilding of crawler tractors, cranes & shovels

TRACK PRESS SERVICE
Pins & bushings turned for all size tractors from the smallest to the HD 4L

GROUSER BARS
for loaders & dozers

DISMANTLING FOR USED PARTS
Crawler tractors including Caterpillar, Allis Chalmers, International, Terex & John Deere

NEW UNDERCARRIAGE AND FINAL DRIVE PARTS
CUTTING EDGES AND BUCKET TEETH

Call for Inventory & Price Lists

State Line Machine Inc.

200 OWENSBY DRIVE, WILMINGTON, DEL 19810
(302) 478-0285
(CONCORD PK & PENNA DEL STATELINE)

