

Public Sales Register

Closing Date - Monday, 5:00 P.M.
of each week's publication

FRI NOV. 27 - 10 A.M.
Public Sale of Antique Furniture, Oriental Rugs, Collectibles, Glassware and Antique Car Located 8 mi west of Harrisburg, PA on Rt 22-322, then East 1/2 mi from Dauphin, PA, along Stoney Creek Road to Auction Barn Kerry A Pae, Auct

FRI NOV 27 9 A.M.
Public Sale of Household Items, Antiques and Shop Tools Located in the Village of McKees Falls, along 11-15, midway between Liverpool and Port Trevorton Donald Elsass, Jr and Cheryl Ellasser, Owners Hoffman, Auctioneer

FRI NOV 27 - 12:30 Noon
Day Dairy Cow Sale including 2 load fancy Registered and Grade cows and heifers from New England States and Canada To be held at Smoketown Quality Dairy Sales, Rt 340, 5 miles East of Lancaster, 5 miles West of Intercourse Sale by Gordon and Helen Fritz Carl Diller & Paul Snyder, Auctioneers

SAT NOV 28 - Public Sale of Farm and Small Acreage Located approx 56 mi west of Harrisburg, Juniata Co., PA Long Bros., Auctioneers 717-527-4784.

SAT NOV 28 - 9 A.M.
Public Sale of Butcher

Shop and Wood Working Equipment and Other Personal Property Located along Rt 897 between Swartzville and Reinholds, about 2 squares east of the former Black Horse Hotel in EST

Localico Twp Juniata Co., PA Mrs Anna Kolinski H H Leid Auction Service
SAT NOV 28 - 9 A.M.
Public Sale of Sewing Supplies, Tools and Household Goods Located 6 mi south of Quarryville, 8 mi. north of Oxford, 500' off 472 along Maple Shape Rd at Kirkwood Fabric, Lanc Co Sale by Abram B Stoltzfus
SAT NOV 28 - 1 P.M.

Public Sale of Real Estate Located 1/2 mi. east Nickel Mines on White Oak Rd Terms by Ben and Barbara Esh Steve Petersheim and Everett Kreider, Auctioneers 717-786-4624
SAT NOV 28 - 9 A.M.
Public Sale of Antique Furniture, Collectibles, Clocks and Glassware Located on Denison Rd, just past Stoney Creek Auction Barn, 1/2 mile turn left onto Denison Road to farm on right (8 mi west

of Harrisburg, PA or Rt 22-322 West, then East 1/2 mi from Dauphin, PA along Stoney Creek Rd to Auction Barn) Estate of Mary J Denison. Kerry A Pae, Auctioneer
SAT. NOV 28 - 11 A.M.
Consignment Horse Sale at the Keister's Middleburg Auction Sales, Inc Rt 522, 3 miles East of Middleburg, 5 miles West of Selingsgrove, Pa Don & Walt Keister, Owners, Ray Long & Dave Imes Auctioneers.

PUBLIC SALE

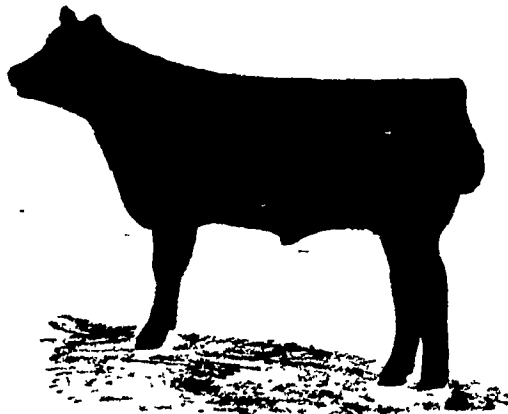
WEDNESDAY, NOV. 25, 1981
at 1:00 p.m.
REAL ESTATE

8 Acre Chicken & Produce Farm
Located in Leacock Township, Lancaster County, PA — 1 mile west of Intercourse, 2 1/2 miles east of Bird-in-Hand on Old Leacock Road, 1/4 mile south of Route 340 - Watch for signs.

REAL ESTATE consists of a 2 1/2 story frame stucco house with 4 bedrooms and bath, bank barn renovated for hogs (100 head capacity), high rise chicken house (10,000 bird capacity), diesel air compressor, lights and all accessories go with real estate, house trailer, carriage shed. Barn scaffolded for tobacco situated on 8 acres of ground of which 4 acres are tillable with balance in pasture. Improvements well maintained.
TERMS OF SALE: 10% down day of sale, final settlement 90 days or negotiable.

Terms by:
AMOS E. & ANNA S. FISHER

Auctioneers:
Steve Petersheim
Call collect - 717-786-4624
Everett Kreider



WALTER FAMILY CLUB CALF SALE

FRIDAY, NOVEMBER 27, 1981
7:30 P.M. Sharp

50 head of preconditioned & halter broken club calves. Consisting of Angus, Chianina, Simmental Limousin, Maine Anjou, Hereford and Charolais crosses.

We will be featuring young, black Chianina and Limousin crosses which will make super Farm Show prospects. We also have a dynamic set of black Simmental calves.

We are thoroughly impressed with the quality of the calves and are looking forward to presenting to you "Our best set of calves yet!"

Sale location: Shady Lane Dairy Sales, Quarryville.

Further Inquiries: **Donald Walter**
RD2 Airville, PA 17302
717-862-3366

PUBLIC SALE

OF VALUABLE FARM,
FARM MACHINERY AND
ANTIQUE HOUSEHOLD GOODS
SATURDAY, NOVEMBER 28
Sale at 10:00 A.M.

Located in Guilford township, Franklin Co., Pa. 5 miles east of Chambersburg exit 6 of Interstate 81 turn south off U.S. route 30 at Fayetteville on to old route 997 or Mont Alto Rd. go 2 1/2 miles to New Guilford church turn north. Watch for sale signs.

MF 165 gas tractor wide front on good rubber; MF 35 tractor wide front heavy duty loader; 1936 Graham Bradley 6 cylinder tractor; JD 55 12 ft. self-propelled combine; NH 461 hay bine; Lot of other farm machinery.

At 1:00 PM will offer real estate. 120 acres more or less all undercultivation with road frontage. Good Duffield soil. Improved by 2 1/2 story frame weatherboard house, with aluminum siding. 9 rooms with 2 baths, 80 ft. two floor bank barn. 10x50 ft. concrete silo, block milk house. 30x42 ft. concrete floor wagon shed with 2 large corn cribs 45x90 ft. open front steel frame and siding implement shed. 25x50 ft. 3 story block chicken house. 2 car block garage. Drilled well, cistern and reservoir.

For inspection of real estate call 717-352-7778 after 5:30 P.M. or 717-328-3227. Terms of real estate 10% down other terms say of sale. Real Estate subject to prior sale.

Order of sale: household goods, tools and machinery
Lunch stand reserved

Estate of
MELVIN B. CAUFMAN
Edgar J. Stull Auctioneer
Richard K. Hoskinson Attorney

PUBLIC SALE

OF 46 ACRE FARM
Lancaster County, Pa. (Brownstown)
West Earl Township.
WED., NOV. 25, 1981
SALE TIME 2 P.M.

Located along E. Main St., Brownstown, Pa.

46 ACRES (More or Less)
Limestone Soil. Borders Conestoga Creek.
2 1/2 STORY FRAME DWELLING

Zoned Residential. 3 bedrooms & full bath on second floor. Large living room, large eat-in kitchen, dining room, family room, summer kitchen with fireplace.

Oil fired hot air heat. 1000 gal. buried tank. Never failing well or boro water. New drain-field.

BANK BARN — 60' x 100'
Steers or Pigs

3 STORY CHICKEN HOUSE 30' x 60'
20' x 32' 2-CAR GARAGE & WORK SHOP

This farm is ideally located in heart of Lancaster farm country. Situated next to village of Brownstown.

50' frontage on North Church St. and many feet frontage along E. Main St.

Easy access to Metropolitan areas, 1/4" mile from Rt. 222 & Rt. 772 (Brownstown) interchange.

Open House — Sat., Nov. 14 & Sat., Nov. 21 from 12 noon to 4 p.m. or for information or inspection 665-6040.

Terms By:
ELLA BUCH WEIDLER ESTATE
Allen W. Buch,
Miriam V. Good,
Executors

T. Glenn Horst, Auct.
Timothy G. Horst, Auct.
859-1331
Eaby & Eaby, Atty.



CONSIGNMENT HORSE SALE

SATURDAY, NOVEMBER 28
11:00 A.M. Sharp

Tack sold at 9:30 A.M.
Horses Hitched at 9:00 A.M.
(If weather permits)

KEISTER'S MIDDLEBURG AUCTION SALES, INC.
Route 522, 3 miles East of Middleburg
5 miles West of Selingsgrove

WORK HORSES

Including team of 3 and 4 yr. old Belgian Mares (no papers). Been worked in all farm machinery this summer. Also 2 yr. old Belgian stud colt (no papers).

NOTICE This is the last horse sale for this year.

One load of sharp standardbred, carriage & buggy horses.

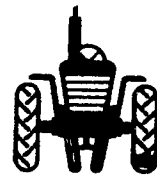
For Information Call
717-992-1490 or 717-837-2222

KEISTER'S MIDDLEBURG AUCTION SALES, INC.
Rt. 522 - RD 3, Middleburg, Pa.

Owners
DON & WALT KEISTER

Ray Long & Dave Imes Auctioneers

Terms: Cash Trucking Available
Restaurant Open



GRAIN FARM MACHINERY AUCTION

SAT., DEC. 5, 1981
at 10 A.M.
Phillipsburg, N.J.

For Marie K. Litton, located on Hensfoot Rd., off Rt. 57, opposite Wicks Lumber Co. Entrance, 1 1/2 miles East of Phillipsburg, N.J., Lopatcong Twp. From Rt. 22 - 78 at circle take Rt. 519 North to Hensfoot Rd. by Hine Line Meat Plant. Blizzard Date Mon. Dec. 7, 1981.

10 A.M. SHOP ITEMS - torch set, drill press stand, elect saws, grinder, copper tubing, various machine parts, belts, hyd hoses, some hand tools, Dayton meat scale, Vises, oil, etc Simplicity 4008 and Sears riding lawn mowers

CHICKEN EQUIP. - brooder, egg grade, 480 cages, feeders, various other chicken equipment. Grain tester, various seeds, waxy corn, Sudex, etc Sprays, cans of Lasso, Lorox, Bladex etc Feed carts, various barn fans, 3 fuel tanks, gates, electric fencer, fence wire and posts.

12 NOON COMBINE - John Deere 4400 DL self propelled combine w/4 row 443 corn hd. and 13 ft grain hd, cab etc

TRACTORS - Ford 8600 DL tractor Dual power W F 3 PTH 1000 hrs., J D 2630 DL W F 3 PTH 807 hrs, J.D 1010 row crop W.F 3 PTH w/fully hyd front end loader, Ford 5000 DL tractor 3 PTH. W F

TRUCKS - 1975 IHC Loadstar 1600 w/factory 330 bu metal grain dump body, 2 spd rear, 14,000 miles 1964 Chev 60 w/275 bu dump grain body 1964 Chev. 60 cab over w/12 ft flat bed, 1971 Ford Econoline as is

FIELD EQUIPMENT - J D 4 row 7000 maxi merge corn planter 30" w/monitor, J.D 17 hole grain drill, IHC 4 btm 710 auto reset semi mtd plow, Taylor Way 3 PTH 10 ft. chisel plow, Allied 12 ft. heavy transport disc, Dunham 12 ft cultmulcher, 2 sec harrow, 400 gal field sprayer, N.H. 68 hay baler, N H 3 PTH 7 ft mower, 3 PTH Ferguson hay rake, 2 flat hay wagons, 3 PTH cultivator, N.I. 165 bu PTO manure spreader, Ford 5 ft rotary mower, N1 3 PTH spinner fert spreader, snow plow w/frame

GRAIN BINS - AUGERS ETC. - Stormor 5200 bu bin w/dryer unit built in, spreader, stirator, Dryomation farm fan and loading auger, sells complete! Stormor 5200 bu bin w/fan, 24 ft bin sweep auger, Cardinal loading auger hyd unloading auger for trucks, N1 30 ft transport auger, Allied 34 ft PTO transport auger, Mayrath 20 ft. transport auger w/high jack, 50 ft PTO transport auger Various small augers, 12 ft floor pit auger, grain fan

BUILDINGS - Pole shed 66 x 50 Alum & pole construction 3-60x100 chicken houses

AUCTIONEERS NOTE: Due to the fatal farm accident of Mr. Litton, Mrs. Litton has decided to discontinue the grain farm operation. Equipment has been kept under cover and is in good condition! With the high cost of new machinery, attending this sale can be very profitable! Owner and Auctioneer not responsible for accidents! Lunch available!

TERMS - Cash or Good Check with Identification, Paid in Full Sale Day!

Owner, **MARIE K. LITTON**

Sale Conducted By:
Col. Fred R. Daniel Auctioneers Inc.,
Neshanic Sta., N.J. 201-369-4784
Farm Sales are our specialty