

# Golden Guerneys move forward...in breed merger

**BY DONNA TOMMELLEO REFTON** — They're almost "kissing cousins." Both the Golden Guernsey and the spunky Jersey originated from neighboring islands in the English Channel.

And although the Guernsey predated the Jersey's 1840 arrival in the U.S. by only 9 years, it took almost 145 years for the two breeds to combine for a long-awaited family reunion.

American Guernsey Cattle Club state representative, Janet Harding, last Friday, announced the imminent merger of the AGCC and the American Jersey Cattle Club.

Speaking to Lancaster County Guernsey breeders during their Annual Dinner Meeting, Harding explained the merger will allow greater operating efficiency in both organizations while saving money.

"We intend to maintain our individualities," she reported.

The merger, effective January

1983, has been researched by an AGCC director-appointed committee since April 1980. However, Harding noted that a similar move was introduced as early as 1957.

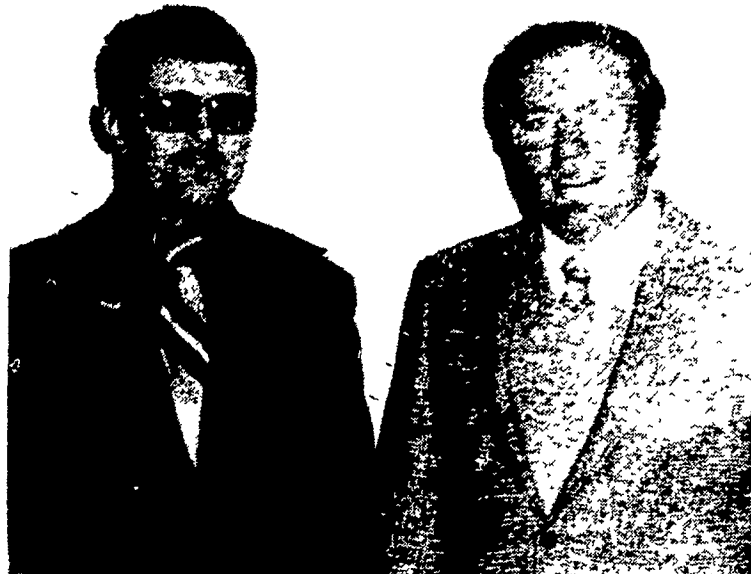
The two breed organizations will occupy the same building in Columbus, Ohio but the facility will not be the building that currently houses the Jersey headquarters. The AGCC has already sold its Peterborough, N.H. headquarters and now leases space.

The groundwork for the new headquarters, dubbed the Purebred Registry Center, will be handled by the Corporate Executive Committee. The CEC is comprised of representatives from both breed clubs. The number of representatives from both organizations will be based on the number of registrations in a three year period, said Harding.

Within the PRC, both breed clubs will merge several services. Typesetting and copy layout will be shared, although Harding



Pennsylvania Guernsey Breeders Association's successful year, as former representative, Ruth Ann Benedict, right, does National Guernsey Queen, Millie Linde looks on.



Bob Wagner, left, of Quarryville and Fred Crider, Nottingham, were selected as new directors by the Lancaster County Guernsey breeders.

pointed out the national breed publication and editing staff will remain the same. The merger will also combine the two clubs type traits appraisal programs, blood typing, data processing, accounting and purchasing and office maintenance.

Predicting a smooth transition, Harding said she expects to see a combining of field services in the future as well as the possible addition of other breed organizations.

"The door will always be open to all breeds," the Brookville woman reported.

Harding also noted the acceptance of a new Executive Secretary for the AGCC, Bernard Heisner. Heisner, who will take over in January 1982, is currently Director of Information at Select Sires.

State association representative

Ruth Ann Benedict reported on several profit-making Guernsey sales sponsored by the Pennsylvania Guernsey Breeders Association.

Peter Witmer, 4-H leader, handed out votes of praise like after dinner mints, as he lauded his 4-H'ers for their accomplishments throughout the year. His accolades included a successful 4-H roundup, fitting and showing demonstrations and the Grand Champion record book honored during the recent Lancaster County 4-H dairy banquet.

"The record shows that Guerneys are going forward," announced K.D. Linde, president of the county breed club. Later Linde was joined by several breeders honored for their Guerneys' progress.

Cedar Fringed Farm, Peach

Bottom swept most of the production awards beginning with their top 3-year-old in milk, Cedar Fringed Honeyetta. Owned by Francis and Ethel Kirk, Honeyetta finished with 18,615 pounds of milk.

The Kirks also received recognition for another 3-year-old, Cedar Fringed Sissy. Sissy, top 3-year-old in fat production, finished with 914 pounds of fat, testing 4.9 percent.

Robert Kirk's Cedar Fringed Ingrid claimed the first spot for high 4-year-old in milk, finishing with 20,282 pounds of milk.

Cedar Fringed Junella topped butterfat production in the 4-year-old category with 978 pounds of fat, testing a remarkable 5.7 percent.

Fred and Evelyn Crider, Nottingham walked off with two production certificates before the

(Turn to Page D23)

## Gardeners!

### Save Time, Energy and Frustration...

See for yourself how much joy gardening can be with a Troy-Bilt Roto Tiller-Power Composter. Easily prepares a beautiful seedbed, builds better garden soil and makes Summer cultivating a breeze. Handles so easily, you simply guide it with just one hand. So make this year's garden the best ever..

...with a **TROY-BILT® Tiller!**

ASK ABOUT OUR LAYAWAY PLAN. ONLY \$100 DOWN

All models in stock, full parts and service



**Hollinger's FARM MARKET, INC.**

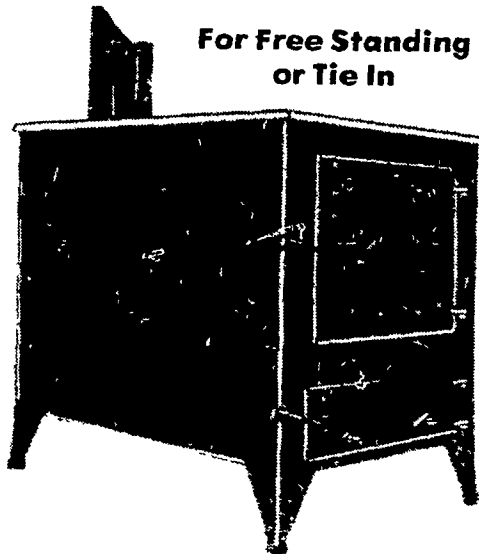
TWO CONVENIENT LOCATIONS:

1755 W. Main St.  
Ephrata, PA 17522  
Located on Route 322  
Phone (717) 738-1131

222 E. Main St  
Campbelltown, PA 17010  
Phone (717) 838-6021

**THE LOG SAVER DELUXE STOVE HEATER** is engineered to trap and utilize heat generated by solid fuels. The combustion chamber is designed to create a swirling movement of heat that builds up turbulence inside the fire chamber and through the heat exchanger. This is a stove that is designed for slow burning up to 14 hours on one refueling. This is made possible because of a unique draft entry chamber where air is preheated and controlled automatically by a bi-metal thermostat.

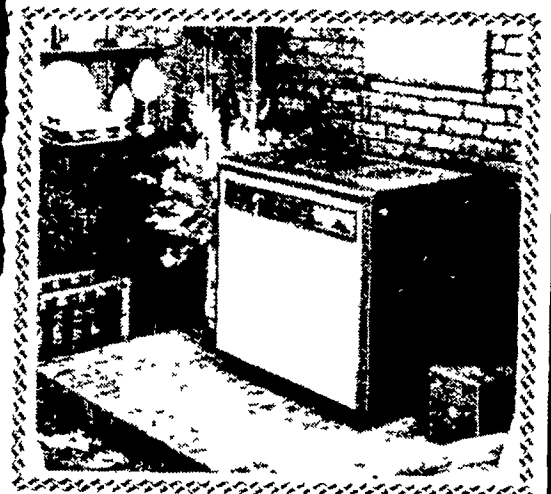
For Free Standing or Tie In



4 mi. South of Strasburg along White Oak Rd.

**WHITE OAK COACH SHOP**

Amos L. Stoltzfus  
Rd 1 Box 215  
Strasburg, PA 17579



### Automatic Coal and Wood Circulators

The economy of wood with the luxury of automatically controlled temperature and the assurance of safety with UL Listing! Up to 12 hours of constant, even heat with one load of fuel! Model 9901 B for use with coal and wood. Similar in features and appearance to 8802 B but has rotating duplex shaker grates designed for coal burning, and cast iron brick retainers. Features • Automatic thermostat lets you set the comfort level you desire! • Linings of high temp refractory brick and cast iron • Cast iron grates • Cast iron ash and feed doors, door frames, and flue collar • Louvered top lifts off for emergency cooking • Smart, new styling with wood grain panel, gold mesh grill, scratch resistant lifetime porcelain finish • Optional equipment includes counterflow blower and draft equalizer. **UL LISTED**

SPECIFICATIONS (8802 B & 9901 B)

Cabinet			Fire Box			Length of		Weight
Hgt	Lgt	Dpt	Hgt	Lgt	Dpt	Wood	Coal	8802 B (44) lb
42	31	21	18 1/2	25 1/2	14 1/2	25	6	210 lb 25 lb