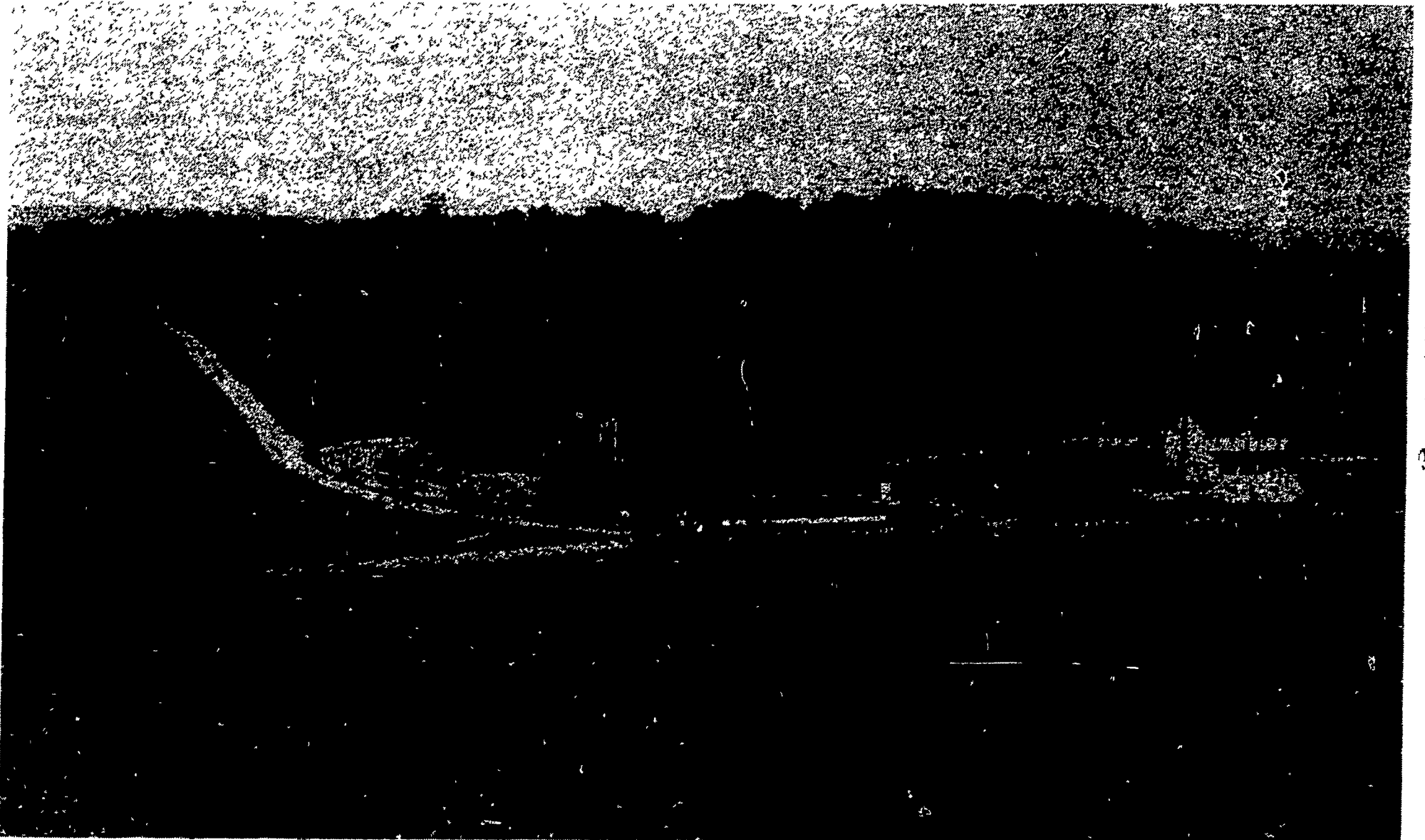


# Farmland Preservation ~ It's worth it



*Cessna Bedford County*

This is another in a series of scenic photos of Pennsylvania farmland, as it appears today. And hopefully, as it will continue to appear tomorrow and beyond.

**FRANK A.  
FILLIPPO, INC.**

**— WANTED —**

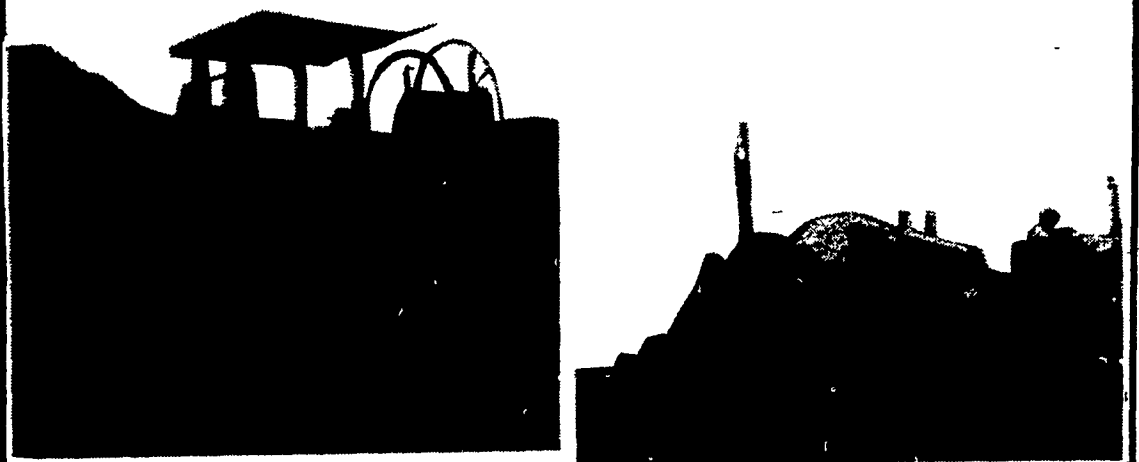
**DISABLED &  
CRIPPLED COWS,  
BULLS & STEERS**

**Competitive Prices  
Paid**

**Slaughtered under  
government inspection**

**Call:**  
Frank Fillippo -  
Residence - 215-666-0725  
Elam Ginder - 717-367-3824  
C.L. King - 717-786-7229

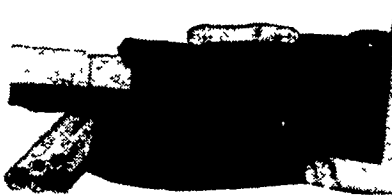
## DRAINAGE PROBLEMS?



**COCALICO EQUIPMENT HAS THE TWO MACHINES TO  
HANDLE YOUR DRAINAGE PROBLEMS.**

★ Both machines Equipped with Laser Beam Grade Control

Drainage Pays High Returns		COMPARE
Investment	Typical Annual Return	
Land Drainage .....	21-46%	Even with the conservative-figures shown here, it's obvious that land drainage should top farmers' lists of investment priorities.
Farm Buildings .....	3-23%	
Farm Land .....	11%	
Stocks .....	7.4%	
Bonds .....	6.1%	



★ We Stock Heavy Grade Tubing which Exceeds SCS Specifications. In sizes 4", 6", 8", 10" and 12".

**NOW AVAILABLE  
15" & 18" Tubing**

★ Also Pipe And Fittings For Tile Outlet Terraces.



**GOCALICO EQUIP. CO.**  
DRAINAGE & EXCAVATING  
RD #3, DENVER, PA 17517 PH: 215-267-3808

