

Livestock market and auction news

St. Louis Cattle

Thursday, November 12
Report supplied by USDA

Receipts this week: 5,200;
Week Ago: 4,500;
Year Ago: 5,000;
Compared last weeks close, slaughter steers and heifers unevenly 1.00-2.00 lower. Cows 1.00-2.00 higher. Bulls fully steady. Slaughter supply mainly Choice and Prime 2-4 1050-1150 lbs. steers, around 40% heifers and 10% heifers.

SLAUGHTER STEERS: Mixed Choice and Prime 2-4 1050-1250 lbs. 57.00-59.00 early, not tested late; few lots 3-4 1125-1250 lbs. 56.00-56.50. Choice 2-4 950-1250 lbs. 56.00-58.00, most closing sales 56.00-57.50; few lots 2-3 950-1100 lbs. 57.75-58.00. Mixed Good and Choice 2-4 900-1150 lbs. 55.50-57.00. Good 2-3 900-1175 lbs. 54.50-56.00. Mostly Good 2-3 1050-1250 lbs. holsteins 54.00-55.00.

SLAUGHTER HEIFERS: Couple loads High-Choice and Prime 2-4 950-1055 lbs. 56.50-56.76, part load 1072 lbs. 57.00. Mixed Choice and Prime 2-4 875-1075 lbs. 55.50-56.25; part load 3 to mostly 4's around 975 lbs. 53.00. Choice 2-4 800-1050 lbs. 54.50-55.50. Mixed Good and Choice 2-3 750-1000 lbs. 53.50-55.50. Good 2-3 700-950 lbs. 51.00-54.00.

COWS: Closing week sales: Utility and Commercial 2-4 36.00-39.00. Boning Utility 1-2 39.00-40.00. Cutter 1-2 34.00-38.00. Canner and Low Cutter 1-2 30.00-34.00.

BULLS: Yield Grade 1-2 1050-1900 lbs. 43.00-48.50, mostly 43.00-48.00. Individual Yield Grade 1 1745 lbs. 49.75.

FEEDERS. (Including around 2,000 at the regular Thursday auction.) Feeder steers 1.00-2.00 higher. Feeder heifers firm to 2.00 higher, advance on weights under 500#. Attendance fairly large and demand good for bulk or represented grades and weights. Supply mainly Medium Frame 1

and mixed 1-2 400-800# steers and 300-600# heifers.

FEEDER STEERS: Medium Frame 1: 350-500# 61.50-66.00; 500-600# 61.00-63.00; 600-700# 62.00-63.75; 700-875# 61.25-62.75. Medium Frame 1-2 and some Small Frame 1: 325-575# 55.00-60.25, mostly 58.00-59.00. Large Frame 2 Holsteins: several lots 475-990# 48.00-52.00, 49.00-51.00.

FEEDER HEIFERS: Medium Frame 1-2. 300-500# 51.50-56.25, mostly 53.00-55.00; 500-600# 50.00-55.50; few lots 625-725# 50.25-51.50. Medium Frame 1-2 and few lots small lots: 300-500# 45.00-50.00, mostly 47.00-49.00.

STOCK COWS: Lot Medium Large Frame 1-2 840# middle-aged 37.25.

Middleburg Auction

Middleburg, Pa.
Tuesday, November 10
Report supplied by PDA

CATTLE 341. Compared with last Tuesday's market, slaughter cows steady to \$1 higher. Choice 2-4, 1075-1350 lbs. slaughter steers 59.60-64.10, Good 56.50-59.50, Standard 50.25-55. Few Choice slaughter heifers 58.00-62, few Good 53.75-58.75. Utility and Commercial slaughter cows 36.75-41.60, few 45.10, Cutters 33.25-37.85, Canner and Low Cutters 27.10-33.25. Good slaughter bullocks 53.50-58.60, one 59.75. Yield Grade #1, 1000-1875 lbs. slaughter bulls 46.00-56.75. Large and Medium Frame #1, 400-800 lbs feeder steers and bulls 48.00-54, couple 60.50.

CALVES 165. Choice vealers 82.00-88, individual 95.00, few Good 65.00-75, Standard and Good 70-100 lbs. 45.00-53. Farm Calves: Hol. Bulls 85-130 lbs. 55.00-85, few 99.00; few Hol. Heifers 80-115 lbs. 65-112.50.

HOGS 340. (Mon. 11-9-81) Barrows and gilts steady to 25 cents lower. US No. 1-2 210-240 lbs. barrows and gilts 46-47.25, No. 1-3 190-250 lbs. 45.00-46, No. 2-3 190-270

lbs. 42.00-45. US No. 1-3 300-600 lbs. sows 40.00-43, few 47.50, Utility 220-400 lbs. 32.50-40.

HOGS 51. (11-10-81). Few Lots US No. 1-3 240-265 lbs. barrows and gilts 45.25-47.25. Boars 36.00-38.

FEEDER PIGS 286. US No. 1-3 15-20 lbs. feeder pigs 12.50-18 per head, No. 1-3 20-35 lbs. 16.50-28, No. 1-3 35-50 lbs. 24.00-31, No. 1-3 55-75 lbs. 30.50-35.50 per head; No. 1-3 110-160 lbs. 40.50-48 per hundredweight.

SHEEP 19. Choice 85-110 lbs. woolled slaughter lambs 49.00-54.50, one 57.00; Good 65-85 lbs. 42-47.50.

GOATS 12. \$21-\$41 per head.

Chambersburg Auction

Chambersburg, PA
Thursday, November 12
Report supplied by PDA

CATTLE 410. Compared with last week's market: Sl. cows 25-1.50 higher. Sl. steers few Choice No. 2-3 1050-1150 lbs. 62.50-63.85, Good 56.25-59.50; Standard 50.00-55.50. Sl. heifers: few Good 53.00-57.25; few Standard 48.50-53.50. Sl. cows: Utility & Commercial 38.00-43.25; Cutters 36.50-40.25; Canner & L. Cutter 32.50-37.00; Shells down to 27.00. Sl. bulls: Yield Grade No. 1, 1100-1550 lbs. 45.00-52.75.

FEEDER CATTLE: Steers Large Frame No. 2, 300-800 lb. 45.50-55.50. Heifers, few Medium Frame No. 1, 300-450 lb. 41.50-47.50.

CALVES: 553. Vealers mostly steady to 2.00 higher. Choice 81.00-89.00; Good 65.00-80.00, 90-110 lbs. 57.00-61.00; 70-95 lbs. 51.00-57.50. Utility 50-85 lbs. 38.00-52.00.

FARM CALVES: Hol. Bulls 85-130 lbs. 56.00-85.00; Hol. Heifers 75-125 lbs. 65.00-115.00.

HOGS: 70. Lot No. 1-3 237 lbs. at 43.35. Sows US No. 1-3 300-550 lbs. 39.50-42.75. Few Boars 34.50-34.75.

FEEDER PIGS: 90. Few lots US No. 1-3 20-40 lbs. 14.00-22.00 per head.

SHEEP: 66. Good & Choice 60-95 lbs. 38.00-46.00. Few Sl. ewes 13.00-26.00.

Indiana Auction

Thursday, November 12

CATTLE 131. Compared with last week's market: Sl. steers: (few) Good 52.50-54.75; (few) Standard 44.00-49.50. Sl. cows: (few) Utility & Commercial 39.00-42.00; Cutters 36.25-40.75; Canner & L. Cutter 29.25-35.75; Shells down to 20.50. Sl. bulls: (few) Yield Grade No. 1, 1020-1880 lbs. 46.75-50.00; (few) Yield Grade No. 2, 1260-1450 lbs. 40.00-44.25.

FEEDER CATTLE: Steers, (few) Medium & Large Frame No. 1, 340-675 lbs. 45.00-53.25; (few) Large Frame No. 2, 700-850 lbs. 35.00-44.00. Heifers, Medium & Large No. 1 300-650 lbs. 41.25-48.00. Medium Frame No. 2 390-715 lbs. 33.50-38.25. Bulls (few) Medium & Large Frame No. 1, 410-700 lbs. 41.00-50.25.

CALVES: 118. Vealers (few) Choice 74.00-83.00; (few) Good 55.00-63.00 90-120 lbs. 41.00-57.00; 65-85 lbs. 30.00-42.00; (few) Utility 50-90 lbs. 20.00-31.00.

FARM CALVES: Hol. Bulls 90-125 lbs. 56.00-90.00; (few) Hol. Heifers 80-150 lbs. 64.00-89.00. Beef Cross Bulls & Heifers 60-100 lbs. 49.00-65.00.

HOGS: 74. Barrows US No. 1-2 220-240 lbs. 47.00-48.25 (few) No. 1-3 210-235 lbs. 46.00-47.00; (few) No. 2-3 240-270 lbs. 44.00-45.00; lot No. 1-3 145-180 lbs. 35.50-43.75 Sows US no. 1-3 290-635 lbs. 40.00-45.00.

FEEDER PIGS 16. (few) US No. 1-3 30-35 lbs. 16.00-17.00 per head; (few) No. 1-3 50-60 lbs. 25.00-26.00.

SHEEP: 22. Choice 80-95 lbs. 43.00-46.75; lot Good 70 lbs. at 30.00.

Weekly Summary

Friday, November 13

Report supplied by PDA
CATTLE: 4820. Compared with 4132 head last week, and 3869 head a year ago. Compared with last week's market: Slaughter steers steady to .50 higher, spots to 1.00 higher; Sl. heifers mostly 1.00 lower; Sl. cows mostly 1.00-2.00 higher; Sl. bullocks uneven; Sl. bulls steady to strong. Sl. steers: High Choice & Prime No. 3-4, 62.00-63.85, few 65.50; Choice No. 2-4 59.50-64.10, Good 55.00-59.50; Standard 48.00-55.50. Sl. heifers: Choice 57.00-62.50; Good 52.00-57.50; few Standard 48.00-53.00. Sl. cows: Utility & Commercial 39.00-43.50 few 44.50. Cutters 35.00-41.00; Canner & L. Cutter 29.00-37.00; Shells down to 25.00. Sl. bullocks: Choice 59.00-63.00; Good 53.00-59.00; few Standard 45.00-52.00. Sl. bulls: Yield Grade No. 1, 1000-1850 lbs. 46.00-56.75; Yield Grade No. 2, 900-1450 lbs. 40.00-49.50.
FEEDER CATTLE: Steers, Medium Frame No. 1, 300-800 lbs.

40.00-55.50. Heifers, Medium Frame No. 1, 300-650 lbs. 42.00-55.00.

CALVES: 3958. Compared with 3538 head last week and 2559 head a year ago. Vealers uneven, mostly steady to 5.00 higher. Few Prime 90.00-112.00; Choice 85.00-98.00; Good 65.00-85.00, 90-120 lb. 45.00-61.00; 65-90 lbs. 40.00-57.00; Utility 50-110 lbs. 20.00-40.00.

FARM CALVES: Hol. Bulls 80-125 lbs. 55.00-115.00, mostly 65.00-90.00; Hol. Heifers 80-150 lbs. 65.00-105.00, few 155.00.

HOGS: 5435. Compared with 5748 head last week and 6971 head a year ago. Barrows and gilts highly uneven, extremes 2.00 higher to .50 lower. US No. 1-2 200-240 lbs. 46.00-47.25. US No. 1-3 200-250 lbs. 45.00-46.00; No. 2-3 190-250 lbs. 42.00-45.00; No. 1-3 140-190 lbs. 40.00-43.75; Sows US No. 1-3 300-685 lbs. 40.00-44.50, few 47.50. Boars 29.00-38.50.

FEEDER PIGS: 750. Compared with 1179 head last week and 1415 a year ago. Strong to 4.00 higher. US No. 1-3 20-35 lbs. 16.50-24.50 per head; No. 1-3 35-50 lbs. 24.00-31.00; No. 1-3 50-75 lbs. 30.00-35.50.

GRADED FEEDER PIGS: 3636. Compared with 1926 head last week and 3875 head a year ago. All sales by CWT. Feeder Pigs highly uneven, extremes 7.00 higher to 5.00 lower. US No. 1-2 25-40 lbs. 79.00-106.00, 40-50 lbs. 70.00-99.00, few 110.00, 50-60 lbs. 62.00-81.00, 60-75 lbs. 57.00-74.00; US No. 2-3 30-40 lbs. 71.00-94.00, 40-50 lbs. 63.00-76.00, 50-75 lbs. 45.00-73.00.

SHEEP: 567. Compared with 609 head last week and 528 head a year ago. Steady to 3.00 higher Choice 60-120 lbs. 45.00-58.00, few 68.00; Good 60-110 lbs. 42.00-47.50 few down to 35.00. Sl. ewes: 13.00-24.00.



I'M NOT LION...

The Classified Livestock Section Has Beastly Selections!



They have to be tough to make it in one piece. Calcite Crystals make them tough.

It's a long way to the carton. Some make it; some don't.

But there's a smart way to stack the odds in your favor, with LIME CREST® Calcite Crystals. Calcite Crystals work day and night. They release calcium slowly so when the layer is resting the crystals are still at work. The result: a tougher, stronger egg shell. And they usually cost less than oyster shell.

Calcite Crystals are conveniently packaged in 50-lb. bags. Convenient to store, and to handle.

Calcite Crystals help laying hens and turkeys produce strong-shelled eggs, minimizing cracks and checks.

LIME CREST Calcite Crystals... making tougher eggs for a higher packout.



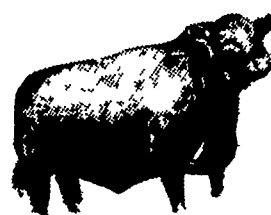
LIME CREST
Limestone Products Corporation
P.O. Box 217, Sparta, NJ 07871 • (201) 383-2000

LEESPORT MARKET & AUCTION, INC.

North end of Leesport, PA

Turn East off Route 61

"WHERE FRIENDS MEET"



BERKS COUNTY'S ONLY WEEKLY CATTLE & SWINE AUCTION — WEDNESDAY AT 1 P.M.

FARMER'S MARKET Every Wednesday, 12 NOON TO 9 P.M.



Garden Fresh Fruits & Vegetables - Bakery Fresh Cakes, Pies and Buns - Butcher Fresh Meats & Cheese - Sporting Goods - Clothing - Furniture - Jewelry - Used Items & Collectibles.

PHONE: 215-926-1307

LEROY WEIST & JOHN WEIST, MGRS.