

Messick entries

(Continued from Page D2)
 Summental heifer entry. The bred and owned, April 1980 heifer was last year's grand champion Summental at the Dauphin County Round-Up. She is sired by Polled Challenger out of a Galiant cow. In only his second year of showing, Mike led his heifer to the reserve grand championship at last month's KILE junior show

- Show results are:
- HEIFERS**
 Chanina
 1 Dwayne Messick Elizabethtown champion 2 Brenda Fisher Hummelstown 3 Joe Messick Middletown
- Simmental**
 September calf
 1 Josephine Popp Middletown
- April calf**
 1 Mike Messick Middletown champion 2 Sally Messick Middletown reserve champion
- STEERS**
 Class I
 1 Dave Coble Hershey 2 Dale Shope Mid

- dletown 3 Matt Webster Halifax 4 Cindy Baker Elizabethtown 5 Amy Bowman Elizabethtown
- Class II**
 1 Becky Webster Halifax, 2 Dwayne Coble Hershey 3 Keith Hess Elizabethtown, 4 Dale Fisher Hummelstown 5 Kurt Hess Elizabethtown
- Class III**
 1 Monique Sweigard Halifax 2 Mark Webster Halifax 3 Shannon Puglise Hershey 4 Brenda Fisher Hummelstown 5 Doug Shope Mid dletown
- Class IV**
 1 Kaye Sweigard Halifax 2 Garth Sweigard Halifax 3 Grayson Fair Harrisburg 4 Tim Foreman Hershey 5 Tammy Baker Elizabethtown
- Class V**
 1 Dwayne Messick 2 Steve Martz Millersburg, 3 Judy Fair Harrisburg, 4 Mike Messick 5 Sally Messick
- SHOWMANSHIP**
 Senior
 1 Monique Sweigard 2 Judy Fair 3 Brenda Fisher 4 Dwayne Messick 5 Dale Fisher
- Intermediate**
 1 Becky Webster 2 Tim Foreman 3 Tammy Baker 4 Sally Messick 5 Joe Loobey
- Junior**
 1 Mike Messick 2 Dwayne Coble 3 Amy Bowman 4 Shannon Puglise 5 Garth Sweigard



Mike Messick dispelled all fears of showing jitters and handled his steer with confidence to earn junior champion showman honors.

Technology & energy are major farm challenges

COLLEGE PARK, MD. — Adopting existing technology, accepting new technology and coping with rising energy costs are the three major challenges facing America's farm industry for the 1980's, according to the director of research at the Maryland Agricultural Experiment Station (MAES), University of Maryland.

In a speech delivered Nov. 4 at the 16th Annual Maryland Agricultural Leaders Forum in college Park, Md. W. Lamar Harris said agricultural industry leaders who have not taken advantage of changing technologies and those who fail to grasp new ones on the horizon may find their competitive positions adversely affected.

"Although, in general, society benefits from the introduction of new technology, the transition that takes place following the introduction of new technology can be exceedingly painful, and unquestionably this is one of the challenges agriculture will face during the 1980s," Harris said.

Those who have adopted the technological changes of the last 25 years and those who adopt technology changes of the last 25 years and those who adopt technology on the horizon, such as microcomputers, will displace their less competitive counterparts, he said.

In addition, Harris said, rising energy costs will continue to drive a wedge between depressed farm prices and increasing consumer prices.

Marketing, that area including "everything that happens between

the farm gate and the final consumer," is where the greatest energy challenges will take place in the coming years, according to Harris.

"Rising energy prices in the marketing sector will both depress farm prices and raise consumer prices," he said.

In addressing state agricultural leaders, Harris also cited such challenges to the farm industry as:

- The need for a "far more educated, more sophisticated-

labor force in our farming operations" to handle increasingly complex technology on the farm;

- The need to reassess crop production schemes now that agricultural research is "beginning to see some progress in the area of genetic engineering" of food crops;

- The need to evaluate new technology that benefits the farmer and the consumer through increased efficiency in marketing.

Agent explains safe use of weed sprayers

UNIVERSITY PARK — It is not too late to spray broad leaf weeds in your lawn such as dandelion, chickweed, plantain, ground ivy, etc., and when you are thru, make sure you clean your sprayer after each use, says James J. McKeehen, Delaware County Extension Agricultural Agent. Here are some recommendations:

- ✓ Washing thoroughly with water and a detergent is enough if the herbicide you use was not phenoxy type material such as 2,4-D, MCP, or dicamba.

- ✓ Water and detergent is also satisfactory after using 2,4-D, MCP, or dicamba provided you are not going to use the sprayer later for spraying insecticide or fungicide on your garden or ornamental plants.

- ✓ If you used 2,4-D, MCP, or dicamba, and are going to use the sprayer for fungicides or insecticides, clean it with activated

charcoal or household ammonia. Activated charcoal is preferred because it cleans very rapidly, but household ammonia will also work.

- ✓ When using activated charcoal, put one ounce of it together with one or two ounces of household detergent in two and a half gallons of water. Agitate thoroughly.

- ✓ Operate the sprayer with this mixture in it for two minutes and it will be clean.

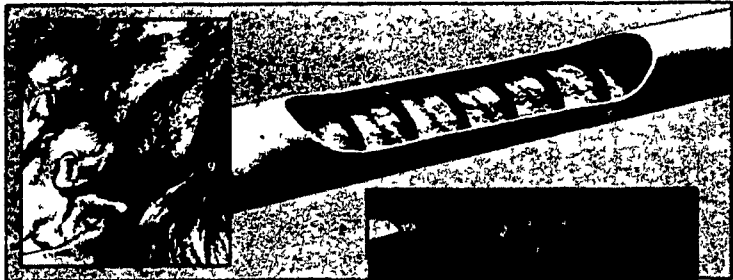
- ✓ If you use ammonia, make a solution of two tablespoons of ammonia in a quart of water.

- ✓ Fill the sprayer with the solution and spray a small amount through the nozzle.

- ✓ Let the rest of the solution stand in the sprayer overnight. Then pour out the solution and rinse the sprayer twice with clean water.

- ✓ Spray part of each rinse through the nozzle.

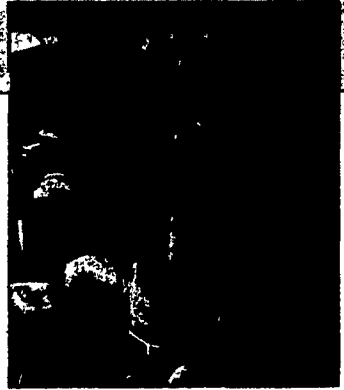
Only Mother Nature makes a better feed delivery system



Hers and ours are both very reliable...

and both are rugged. They're also easy to operate and maintain. Both are totally enclosed systems to protect the feed. And they're very energy-efficient. Neither system uses corner cogs, gears, or pins that cause friction and wear.

But Mother Nature's system has some drawbacks. Chore-Time's FLEX-AUGER® eliminates. Ours adapts to nearly any building layout and handles various feeds. A hog can use ours all its life.



And besides, how much faith could you have in a system like Mother Nature's that has a reputation for working great for a few weeks, then quitting completely? Chore-Time's "coreless" auger is guaranteed 10 years! See us now for complete facts.

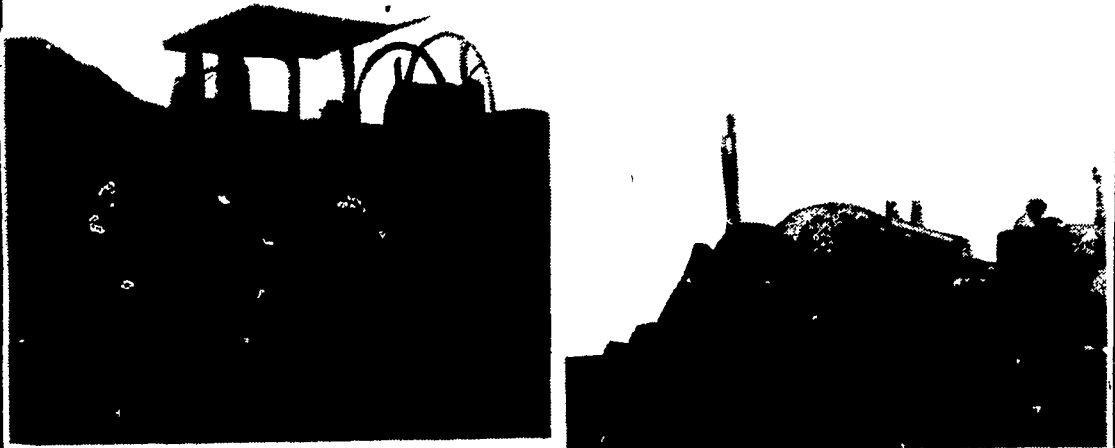
CHORE-TIME

AGRI-EQUIPMENT INC. OFFERS COMPLETE
 • SALES • INSTALLATION • SERVICE

AGRI-EQUIPMENT, INC.

CATTLE - HOG - POULTRY - GRAIN EQUIPMENT
 2754 Creek Hill Rd., Leola, PA 17540
 PHONE: 717-656-4151
 STORE HOURS: Mon.-Fri. 7:30 to 4:30; Sat. 7:30 to 11:30
 SERVING PA, N.J. AND N.Y.

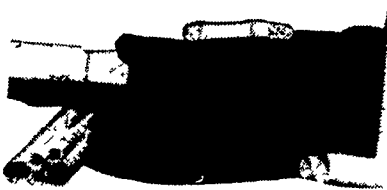
DRAINAGE PROBLEMS?



COCALICO EQUIPMENT HAS THE TWO MACHINES TO HANDLE YOUR DRAINAGE PROBLEMS.

★ Both machines Equipped with Laser Beam Grade Control

Drainage Pays High Returns		COMPARE	
Investment	Typical Annual Return	Even with the conservative figures shown here, it's obvious that land drainage should top farmers' lists of investment priorities.	
Land Drainage	21-46%		
Farm Buildings	3-23%		
Farm Land	11%		
Stocks	7.4%		
Bonds	6.1%		



★ We Stock Heavy Grade Tubing which Exceeds SCS Specifications. In sizes 4", 6", 8", 10" and 12".

NOW AVAILABLE
 15" & 18" Tubing

★ Also Pipe And Fittings For Tile Outlet Terraces.



COCALICO EQUIP. CO.
 DRAINAGE & EXCAVATING

RD #3, DENVER, PA 17517 PH: 215-267-3808

