

Charolais Assoc. offers membership to commercial bull buyers

HOUSTON, Tx. — A program which would develop a membership classification for the commercial beef producer who uses Charolais bulls was approved during the annual spring meeting of the American-International Charolais Association Board of Directors.

The annual dues for a commercial member will cost \$15. The intent is for the breeder who sells a registered Charolais bull to a commercial producer to pay the membership dues for the first year. This will require the Charolais breeder to fill out a commercial membership application form and send it, along with a check for the dues, to the AICA office.

The reasons for establishing this classification are to provide recognition of the importance of the commercial producer to the success of the Charolais breed; to establish a line of communication between AICA and the individual commercial users of Charolais bulls; and to provide an added service to AICA members.

Once the membership ap-

plication is received at the Houston AICA office, the commercial member will be sent a membership packet. This will include a cover letter informing the new commercial member of who sponsored his membership and what he can expect to receive as a result of it. A copy of this letter will also be sent to the sponsoring Charolais breeder.

Also included in this packet will be a copy of the current issue of the

"Charolais Journal", a copy of the most recent Commercial Report, a copy of the current AICA Membership Directory, and a membership certificate.

After the membership has been processed, the commercial member will receive a subscription to the "Charolais Journal"; will be placed on the mailing list to receive the quarterly Commercial Report; be eligible to enroll the cow herd in

the Charolais Herd Improvement Program; have name published in the "Charolais Journal" and also in the next AICA Membership Directory; and be eligible to have his Charolais-cross calves listed in a feeder calf/replacement heifer listing by state.

Prior to the expiration of their first year of membership, the commercial member will receive a letter asking if he would like to continue the membership at a cost

of \$15 per year. A copy of this letter will also be sent to the Charolais breeder who originally sponsored the commercial producer's membership.

For more information about this new membership classification, or for applications, contact the American-International Charolais Association, 1610 Old Spanish Trail, Houston, Tx., 77054, phone 713/797-9211.

USDA reduces cattle quarantine time

NEW YORK, N.Y. — Effective Nov. 25, the U.S. Department of Agriculture will reduce the time that imported cattle must be quarantined at the Harry S. Truman Animal Import Center in Key West, Fla., from five to three months.

John K. Atwell, deputy administrator of USDA's Animal and Plant Health Inspection Service, said the shorter quarantine is sufficient to allow for the necessary observation and testing

of the animals. It will permit a substantial reduction in the fees charged for testing and maintaining the cattle during the quarantine procedure.

"On the basis of two previous importations of cattle through the center, we know that we can complete the tests and assure the health of the livestock within the 90-day period," Atwell said.

Atwell said in addition to quarantine at the high security facility, located on an offshore

island, the imported cattle are tested and examined in the country of origin and held in a USDA-approved isolation facility in the foreign country before they are delivered to the port of embarkation under USDA supervision.

The Harry S. Truman Animal Import Center was specifically developed to provide a safe means of importing new breeding livestock from countries where foot-and-mouth-disease is known to

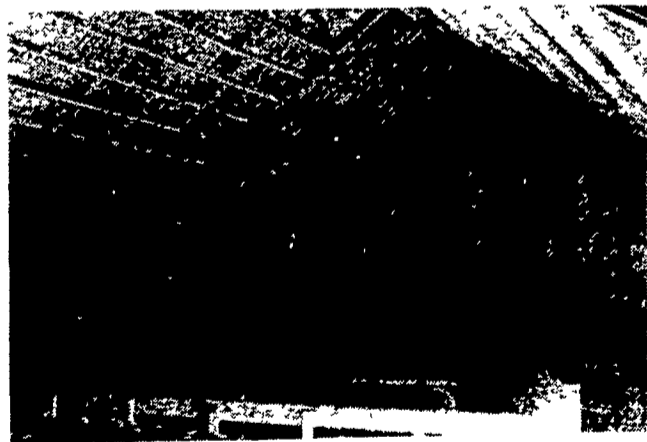
occur. Previously, USDA officials had barred all direct imports of susceptible livestock from affected countries.

The new regulations for quarantine at the Truman Animal Import Center will apply to cattle that will be selected for importation within the next few months. Up to 400 cattle can be handled at the center during each importation, being admitted, tested and cleared for entry as one lot.

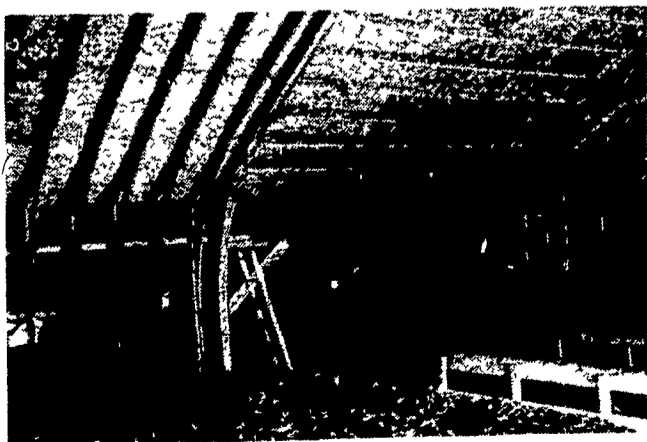
The new regulation was scheduled for publication in the Oct. 26 Federal Register.

7 1/2' x 12'

UNI-ARCH BUILDING
CLEAR SPAN
ALL INSIDE SPACE USEFUL
SECOND FLOOR MAY EASY BE BUILT IN
ARCHES IN ONE CONTINUOUS PIECE FROM FOUNDATION TO PEAK.
ARCH DISTRIBUTES ROOF LOAD TO FOUNDATION.
DRIVE IN WITH YOUR DUMP TRUCK RAISE THE BED -
DRIVE IN WITH YOUR TRACTOR, RAISE YOUR LIFT.



If You Need Space You Need A Uni-Arch



Arches Are Manufactured In Our Local Plant

24 to 50 FOOT WIDTHS,
 CENTER HEIGHTS OF
 15 to 26 FEET

LAMINATED UNI-ARCH ARE...
VERSATILE
STRONG
ECONOMICAL
A SMALL BUILDING WITH MORE SPACE

CALL US - WRITE US FOR MORE INFO. & PRICES
CRANE SERVICE



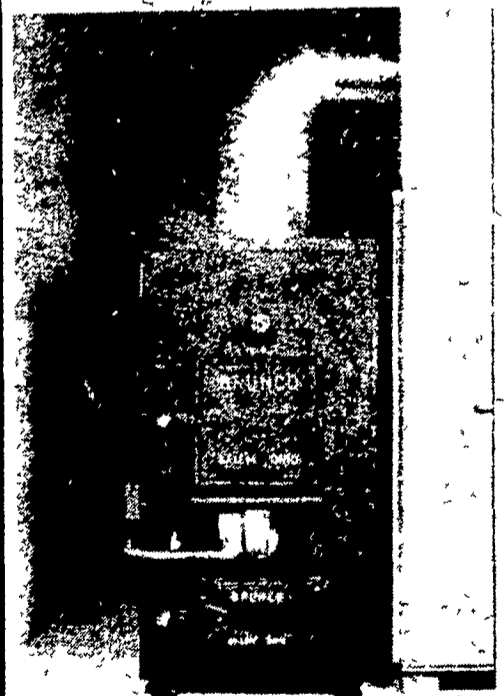
PARS Soil Service

Distributor of Liquid Calcium Delivered in Bulk To Your Farm

Call: 717-872-7342 or 717-367-2667

BRUNCO

Supplemental or Independent Warm Air Furnace Burns Wood or Coal



Includes the following for easy installation: wall thermostat, 24 volt relay, fan limit control, draft fan and distribution.

Bowman's Stove Shop, Inc.

R.D. 3, Napierville Road Ephrata, PA 17522
 Follow the signs from the light at Hinkletown

Tues., Wed., Sat 9-5
 Thurs., Fri 9-9
 Closed Mondays



717-733-4973
 Financing Available