

## TOTAL MANAGEMENT MAKES THE DIFFERENCE!

The AG-BAG Sealed Storage System works with you as part of the total management program which can cut feed costs...improve nutrition...and increase your production and profits.

I want to know more about the Ag-Bag System

Mail To: **AMERICAN AG-BAG INC.**  
50 E. 28th Division Highway  
Lititz, Pa. 17543

NAME \_\_\_\_\_

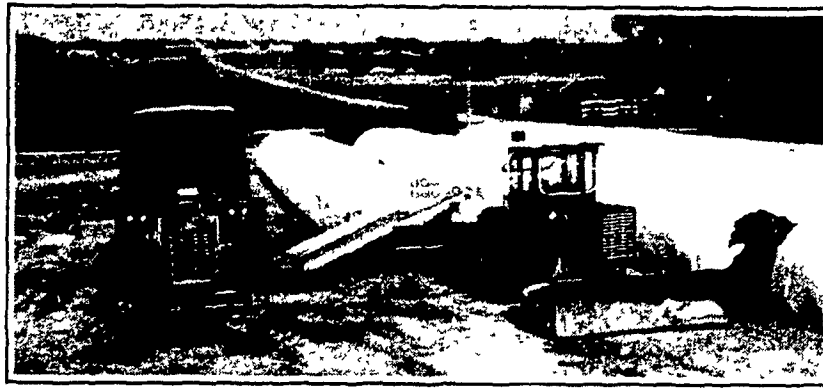
ADDRESS \_\_\_\_\_

CITY \_\_\_\_\_

STATE \_\_\_\_\_ ZIP \_\_\_\_\_

PHONE \_\_\_\_\_

## AG-BAG THE AFFORDABLE SYSTEM



### AMERICAN AG-BAG INC. FORAGE SYSTEMS

50 E. 28th Division Highway  
Lititz, Pa. 17543 Rt. 322 & 501 in Brickerville  
Lancaster County, 717-627-3665

Exclusive Dealer For Pennsylvania, New Jersey, Maryland, Delaware,  
Virginia, West Virginia Note: We Need Part Time & Full Time Salesmen for These Areas

## DESIGNED FOR THE 80's

The Revolutionary AG-BAG System gives you unlimited sealed storage capacity for ... High Moisture Grain, Silage or Haylage.

**CUSTOM BAGGING AVAILABLE  
CALL COLLECT: 717-627-3665**

### FEATURES

- ALL HYDRAULIC OPERATION
- SELF POWERED UNITS AVAILABLE
- EASILY TRANSPORTABLE

Leasing & Bank Financing Available

Field Queen Forage Harvesters **SALES, SERVICE & PARTS** Hesston Farm Equipment



## M.M. WEAVER & SONS, INC.

LEOLA, PA. 17540 717-656-2321

Located: 4 miles West of New Holland on Route 23, 1 1/2 miles Northeast of Leola on the North Groffdale Road, 1 mile on the right, opposite Groffdale Mennonite Church.

### NEW & DEMO HAY, FORAGE & PLANTING

MF 200 Harvester w/2 Row Head	
(4) MF 1 row Corn Head for 200	@ \$900.00
MF 260 Harvester 3 Row Head	
MF 260 Harvester w/Used 2 Row	\$6100.00
MF 22 Bale Thrower	\$1520.00
MF 925 9' Haybine	\$4800.00
MF 37 PT. Hay Rake	\$1650.00
(2) Farmhand F7 Hay Rake	@ \$1995.00
Farmhand M 25 Hay Rake	\$975.00
Niemeyer Hay Tedder	\$1525.00
(2) Mott 3 pt. 72" Flail Mower	@ \$1500.00
(6) Farmhand Corn Processor	\$4500.00
(6) Conveyor For Above	@ \$950.00
MF 1050 Grinder Mixer	\$5700.00
Farmhand 880 Tub Grinder	\$8500.00
MF 468 6 Row Cornplanter	\$2588.00
Farmhand 815 Grinder Mixer	\$4900.00

### USED HAY - FORAGE & PLANTING

New Holland 717 Harvester	
1 row. & Hay Pick Up	\$1400.00
Brady 840 Flail Chopper	\$1250.00
MF 1050 Grinder Mixer	\$4850.00
Fox 2000 Harvester 2 Row	\$1000.00
and Hay Pick Up	\$1000.00
Hesston #10 Stacker	\$3750.00
Brady 1680 Flail Chopper	\$2900.00
New Idea 315 Picker Sheller	\$1800.00
MF 10 Baler w/thrower	\$550.00
Farmhand 5 Wheel Rake	\$600.00
MF 12 Baler	\$1100.00

### TRACTORS USED

MF 1155 8 Sp.	\$11,000.00
MF Super 90 Diesel	\$3900.00
MF 1100 Turbo	\$8250.00
MF 1085 M.P.	\$8200.00
MF 178 M.P.	\$4500.00
MF 85 Gas	\$2200.00
Case 1370 Cab	\$14,000.00
Case 990 w/Loader	\$9500.00
Oliver 1600 Gas	\$3500.00
MF 6 Riding Mower	\$350.00
MF 33 Wheel Loader	\$9000.00
NW 71 Skid Steer	\$8000.00
MF 14 Lawn Tractor	\$1475.00
IH 706 Diesel	\$5500

### DEMO TRACTOR

MF 4840 4 Wheel	\$58,000.00
MF 2775 24 Sp.	\$29,000.00
MF 2745 24 Sp.	\$28,500.00
MF 285 M.P.	\$16,500.00
MF 285 M.P.	\$16,500.00
MF 255 M.P.	\$12,200.00
MF 255 8 Sp. Hi Cl.	\$11,900.00
(2) Ind 20C Tractor Cabs	@ \$1500.00
MF 220 - 4 Tractors	\$7,900.00

### NEW & DEMO MISC. EQUIP.

York 6' Scraper	\$230.00
(4) York 7' Scraper	@ \$250.00
York 7' Scraper	\$500.00
York 8' Scraper	@ \$550.00
York 8' #100 Scraper	\$975.00
York 8' #75 Scraper	\$850.00
MF 226 Scraper (3)	@ \$460.00
MF 8 10 Ton Gear 11L	\$1140.00
MF 7 8 Ton Gear	\$775.00
MF 86 12 Ton Tandem Gear	\$1525.00
EZ Pincor Gear	\$250.00
MF 5 Ton 5th Wheel Gear	\$300.00
EZ 672 6 Ton Gear	\$675.00
EZ 872 8 Ton Gear (3)	@ \$830.00
EZ 1074 10 Ton Gear	\$1050.00
MF 236 Q.A. Loader	\$2495.00
MF 216 Q.A. Loader	\$1750.00
MF 32A Loader	\$3500.00
Dunham 22 Loader Demo	\$1900.00
Dunham 22 Loader (2)	@ \$2550.00
Danuser Post Hole Digger	\$875.00
Little Giant Corn Drag	\$780.00
MF 205 Manure Spreader	\$2850.00
MF 170 Bu. Gravity Box (2)	@ \$530.00
EZ 220 Bu. Gravity Box	\$900.00

### USED MISC. EQUIP.

New Holland Tandem Axle Spreader	\$2000.00
Fert Drill	\$125.00
Fontana Loader	\$800.00
Century Sprayer	\$1250.00

### NEW COMBINES - GRAIN & CORN HEADS

In Stock 860 - 850 - 550	
540 Combines 2-4-6 row	
Corn Heads, 13-15-16-18-20'	
Reg. & Float Grain Heads	
Call for Special Prices	
MF 24 - 2 row Corn Head	\$2350.00
Profiteer 14' P.U. Reel (5)	@ \$625.00
Profiteer 15' P.U. Reel (3)	@ \$650.00

### USED CORN HEADS

MF 83 8 Row 30" (2)	@ \$7000.00
MF 63 C 6 Row 30" (4)	@ \$4000.00
MF 63 C 6 Row 30" (2)	@ \$2500.00
MF 63 C 6 Row 30" (1)	@ \$3500.00
MF 63 6 Row 30" (4)	@ \$2100.00
MF 44 4 Row 38" (2)	@ \$3500.00
MF 44 4 Row 38" (9)	@ \$2500.00
MF 44 4 Row 38" (3)	@ \$2100.00
MF 43 4 Row 30" (1)	@ \$2500.00
MF 33 3 Row 30"	\$2500.00
MF 24 2 Row 38"	\$2200.00
MF 422 4 Row To Fit 510	\$1200.00
MF 421 4 Row To Fit 410	\$1200.00
MF 621 4 Row To Fit 510	\$1200.00
MF 322 3 Row To Fit 410	\$200.00
AC 435 G 4 Row To Fit CII	\$1500.00

### USED COMBINES

IMF 760 V8 Hydro Grain & Corn	\$48,500.00
IMF 760 V8 Hydro 16' Grain	\$34,000.00
IMF 760 6 Cyl. Gear 16' Grain	\$19,000.00
IMF 760 6 Cyl. Gear 4 sp. Grain	\$19,500.00
IMF 510 D 3 sp. Grain Table (3)	@ \$12,500.00
IMF 510 D Hydro Grain Table	\$14,500.00
IMF 300 QA Grain & Corn	\$9000.00
MF 300 Gas 13' Grain	\$3100.00
MF 80 Combine	\$600.00
White 7300 Gas Grain & Corn	\$17,500.00
White 8600 Gas w/Flex Quick Cut Hd	
IH 315 Gas Grain & Corn	\$7900.00
IH 303 Gas Grain & Corn	\$3900.00
New Idea 315 Sheller Unit	\$900.00
JD 95 Gas 13' Grain 30 Corn	\$9200.00
-Just Traded	
NI 708 Dsl. Hydro Uni Systems w/13' Grain Table & 4 Row 30" Corn Husker	

### USED GRAIN TABLES

MF 14' w/P.U. Reels (5)	@ \$1900.00
MF 14' w/P.U. Reels (1)	@ \$1200.00
MF 15' w/P.U. Reels (2)	@ \$2700.00
MF 15' w/P.U. Reels (2)	@ \$1500.00
MF 16' Float Bar	\$2100.00
MF 16' Offset w/P.U. Reel	\$1200.00
(12) 13'-15'-16 P.U. Reels	@ \$75.00 - \$250.00
12' & 14' Pincor to QA (3)	\$500 - \$1200.00

### NEW & DEMO PLOWS & TILLAGE

(2) MF 43 2-14 Plow	@ \$1060.00
MF 129 3 pt. Chisel Plow	\$1375.00
Glenco 9 Tooth Chisel Plow	\$4400.00
Amco F17 32 Disc Harrow	\$5200.00
Dunham 8 Tooth Chisel Plow	\$1600.00
MF 730 Disc Harrow 10'	\$4950.00
Yetter 15' Rotary Hoe	\$1850.00
Dunham 14' Cultipacker	\$1350.00
MF 428 4-38 Cultivator	\$1250.00
MF 428 4-38 Rolling Cultivator	\$1550.00

### USED PLOWS & TILLAGE

IH 550 5 Btm Plow	\$1500.00
MF 880 4 Btm Plow	\$3500.00
MM 6-16 Hyd Reset Plow	\$2350.00
Glenco 9 Tooth Chisel Plow	\$3700.00
Dunham 3 pt. 10' Chisel Plow	\$1600.00
MF 3 pt. 2 Bar Chisel Plow	\$850.00
Case 5 Tooth Chisel Plow	\$750.00
Case 36 Disc Harrow	\$1550.00
Brady 12' Field Cultivator	\$1200.00
Transport 9' Disc Harrow	\$475.00
Tandem 20 Disc Harrow	\$250.00
2 Btm Trailer Plow	\$75.00
JD 3 Pt. 4 Row Cultivator	\$500.00

## GOOD USED EQUIPMENT

F-1256 diesel  
IH 205 Combine w/grain & corn head  
IH 570 manure spreader  
Farmall Super C tractor  
Used Long mod. 910 diesel tractor, 710 hrs., very good cond. \$7400  
Bolens model HT-20 hp w/mtd. loader w/front blade & rotary mower, good cond.  
Oliver 770 diesel tractor, tricycle front end, good cond.  
IH 3 btm. semi-mtd. fast hitch plow  
IH #710 4 F auto reset plow  
Good used lawn tractors.  
55 trailing chisel plow  
2 Farmall M  
One Massey Harris Model 33  
One Ontario Model 1200 16x7 single disc grain drill, good cond.



AMCO NEW IDEA

**L.L. ECKROTH  
FARM EQUIPMENT, INC.**  
RD2, New Ringgold, PA  
717-943-2367

## FOR SALE

IHC 315  
COMBINE  
w/2 heads  
717-464-2778

### COMBINES

NH TR-75  
Pay New Holland what we owe and it's yours.

NH 985 4R Narrow Gleaner E 2 row  
John Deere 45  
Massey 82

### GRINDER MIXERS

NH 350  
NH 352  
JD 400

### SHEETS BROS.

New Holland,  
White  
1061 Carlisle St.  
Hanover, Penna.  
717-632-3660



Nothing runs  
like a Deere

## USED MACHINERY

### TRACTORS:

MF 180D, WFE, New Rubber	\$7900
Farmall 460 gas, clean	\$3985
Oliver 77	\$900
Satoh Beaver 15 hp diesel w/54" mower, 1 yr. old	\$4200 Special! \$3800
AC 185 diesel, w/cab, 1400 hrs.	\$14,500
JD 720 Dsl.	\$3900
JD 630, tricycle	\$3200
JD 60 w/3 pt. hitch	\$1800
Coming in...	
JD 4000 Dsl. WFE w/cab.	\$12,500

### HAYING:

JD 16A chopper	\$1800
NI 290 mower-conditioner	\$1800

### MISCELLANEOUS:

JD 680 Manure Spreader, 400 bu., like new	\$5900
--	--------

### FORAGE:

IH 650 w/2XW - Pick Up	\$1500
IH 555 w/2XW - Pickup	\$1400
JD 38 w/2RN	\$1800
JD 3800 Long Tongue for Parts	\$1100

### COMBINING:

JD 95 Cab - 4xN - Grain	\$10,900
SPECIAL! \$ 8,000	
JD 237 MTD Picker	\$1400
JD 42 pull type	\$1400
JD 40	\$2900
Oliver 525 self propelled, w/11' grain & 2 row wide	\$6000
JD 444 corn head	\$5000
JD 6620 side hill w/15' platform	\$56,000
JD 6600 side hill, hydro, 860 hrs.	\$34,000
JD 643 Corn Head	\$8300

### TILLAGE:

Pittsburg 4x16 3 pt. plow	\$550
MF 4x16 3 pt. Plow	\$500
JD 310 disc, 12'	\$4600
White Off-set disc, 11'	\$4600
JD 350 5/16 reset plow w/cushion coulters	\$3100
JD 145 5/16 Plow	\$1000
JD 950 12' Roller Harrow	\$2900

### PLANTERS:

2 Oliver 540 4 row	\$600 ea
JD 7000 4 row wide w/dry fert., no-till	\$6500
JD 1250 6 row plateless w/monitor	\$1900
IH Cyclo 4 row no-till	\$2500
JD 1240 plateless	\$1200

## WINELAND EQUIP. INC.

RD2 Rte 164 East  
Martinsburg, PA 16662  
Phone 814-793-2109