

? That's A ? Good Question

In one of your recent issues you had an article about generating energy with wind power. The article specifically mentioned Jacob's Windmills. Would you be kind enough to send me an address for this firm? I tried mailing a letter addressed to only Jacob's Windmills, Minn., but it came back.

Richard F. Jarosky
Mr. Jarosky:

There is a Jacob's Wind Electric Company in Minneapolis. Perhaps this is what you are seeking. Their address is Jacob's Wind Electric Company, Fernbrook Lane, Minneapolis, Minnesota 55441. The phone number is 612-559-9361.

To Mr. Turner who earlier asked for a producer of goat milk:

In response to Mr. Turner's question we may be in a position to buy suitably produced goat milk in the spring of 1982. To date our production has been on a very small scale but the addition of more sophisticated equipment by that time will enable us to produce from a larger volume of milk. If

Mr. Turner were to contact us we can then fill him in on our specific requirements for his state approved grade "B" dairy.

Mrs. Roberta Molaro
R1, Box 25
Dornsife, PA 17823
717-758-8359

I am trying to locate an Amish newspaper for a friend. It is called "The Budget." Could anyone help me locate this paper?

Brian Donley

Mr. Donley:

The Budget is published in a small town in Ohio called Sugar-creek. You can write for the paper at this address: The Budget, 134 N. Factory Street, Sugar-creek, Ohio, 44681. Good Luck!

I need trace minerals, specifically manganese, calcium, phosphorus, magnesium and selenium. Where can I buy them? Also, how are cow beets best fed to cattle?

Roland Kamada
Monongahela, PA

Mr. Kamada:

In your search for trace minerals, why not try local mineral suppliers such as Young's Minerals, Vigortone or Ag King? Also try your local feed suppliers and feed mills, most keep a large supply of needed minerals.

According to Harold Harpster, animal scientist at Penn State, when feed beets two cows, farmers should take a few precautions: First beets should be run through a hammermill and then mixed with a dry ration. Beets also can be mixed with some corn silage. Mixing beets with a ration increases the probability that the cow will eat it and that it can be eaten safely. You should limit the beet content to a third of the serving - keeping it two-thirds dry ration. The size of the beet is important. Cattle have choked from whole cull potatoes and a beet of similar size would be no different. Once eaten, beets may be reactive in the rumen and could

cause acidosis. Feeding whole beets is not to be confused with beet pulp which is a dry by-product of sugar beet processing. Beet pulp is used in show cattle rations for fill. Both can be fed, however, 80%

of whole cull beets are digestible nutrients opposed to 70% from beet pulp. But whole cull beets are only 15% dry matter whereas beet pulp is 90% dry matter.

Chester Co. plans holiday program

WEST CHESTER — Are you getting ready for the holidays? Come to the annual "Homemaker's Holiday Meeting" for hints on getting organized and creating ornaments for the holiday season. Everyone is welcome so come along and bring a friend.

The luncheon meeting, sponsored by Penn State Extension service of Chester County will be held Thursday, November 5, 10 a.m. - 2:15 p.m. at St. Anthony's Lodge in Downingtown. Included in the program will be:

Hassle Free Holidays: Tips for managing self, time, and energy from November 28 through December 24, so you are ready to sit back & enjoy your holiday.

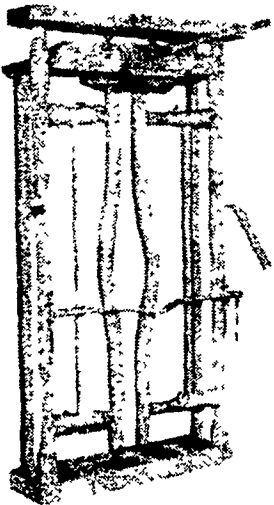
Bag Lunch Blues: Ideas for creating nutritious lunches that have appeal for the brown "bagger" in your family.

Counted Cross-Stitch Ornaments: Workshop in which you will learn the basic techniques for counted cross-stitch and take home a holiday ornament.

4-H IFYE: Travels to New Zealand.

Deadline for registration is Wednesday, October 28. The fee is \$5.75. Call Amy at the Extension office at 696-3500 or mail your check to Penn State Extension Office, 235 W. Market St., West Chester, PA 19380.

AUTOMATIC HEAD GATE FOR CATTLE



SPECIAL PRICE
ON
COMFORT GLO
KEROSENE
HEATERS

WE CARRY
EL-MAR-I
STOVES

"Give Us A Try
Before You Buy"

DANIEL'S FARM STORE

Animal Health Supplies &
Livestock Equipment

Located between Leola & Talmage along Rt. 772
RD 1, Leola, Pa. 17540
717-656-6982

MGS Trailers

DENVER, PENNSYLVANIA



OVER
59
VARIETIES

IT'S FALL!
COME TO SEE OUR
CATALOG AND MODELS

SPECIAL DEALS
JUST FOR YOU...

FEATURING - UTILITY, SNOWMOBILE, AND
HANDYMAN MODELS



(ANYTHING)



(LAWN EQUIPMENT)



(SNOWMOBILES)

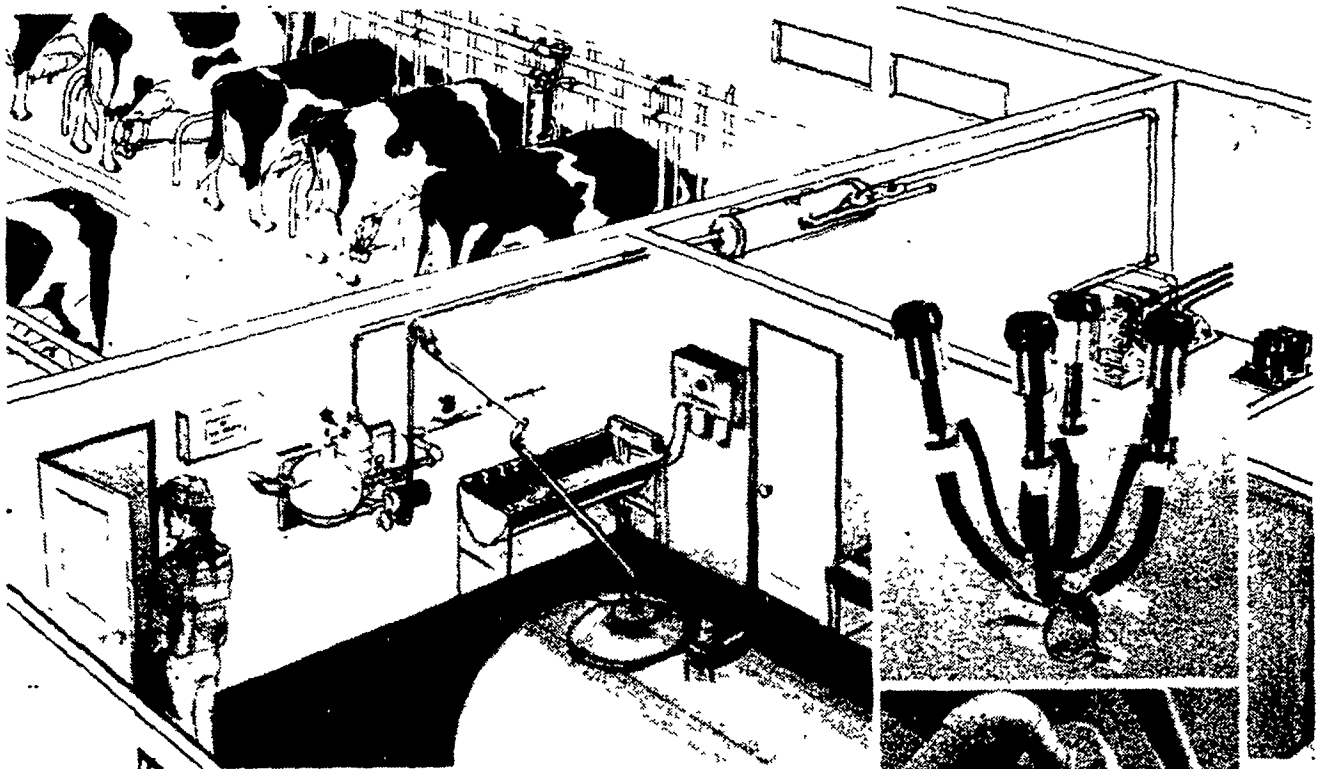
DEALERS:

WHITE OAK LAWN & LEISURE
329 W High St., Manheim, Pa
717/665-4627

MGS RETAIL SALES
R. D. 3 (Near Zinn's Diner)
Denver, Pa.
215/267-7528

MELLOTT BROS. TRLR. SALES
R. D. 2 (Rt. 272N)
Willow Street, Pa
717/464-2311

Not 5%, not 8%, but 10% to 12% SAVINGS with the purchase of a Bou-Matic High Performance Pipeline



FREE LITTLE CHAMP™ DETACHERS

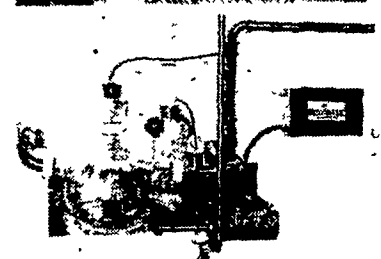
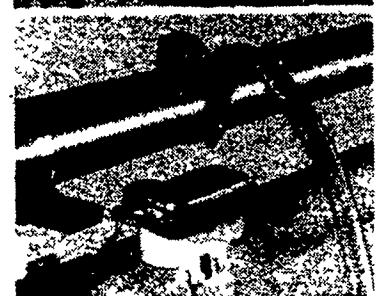
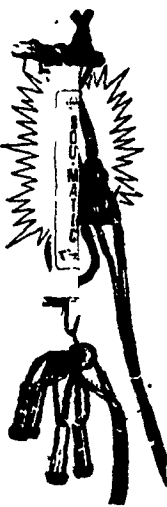
when you buy a new Bou-Matic®
High Performance Stanchion Pipeline

Limited time offer - Free Little Champ™ Detachers, 1 for each unit, when you treat yourself to a high performance stanchion pipeline

The Bou-Matic® Principles of Milking can make your milking time chore an enjoyable experience. Designed for safety, efficiency, and economy, Bou-Matic® stanchion pipelines are recognized as the pipeline to own by discriminating dairymen world-wide

Cow comfort and operator convenience are built into every Bou-Matic® system. Why settle for less when you can treat yourself and your cows to the very latest in equipment technology. The unique features of the Bou-Matic® unit, pulsator, balance tank, valves, and high-capacity receiver team up to deliver the results you need in a modern milking system.

Washable pulsators, fewer moving parts, and two-piece inflations mean reduced operating costs. Why not take advantage of the opportunity to move up to a genuine Bou-Matic® pipeline milking system and receive as a FREE bonus → Little Champ™ automatic stanchion pipeline detachers



BOU-MATIC

A product of Dairy Equipment Company

SHENK'S FARM SERVICE

Installation • Service • Planning Layouts • Sales

CALL TOLL FREE 1-800-732-3532 24 HR. SERVICE OFFERED

501 E. Woods Drive, Lititz, PA 17543 Phone 717-626-1151

Our Service Trucks Are Radio Dispatched

AFTER 6 P.M. - CALL: Ray Sherk 717-626-1152 or Mervin Nissley 717-872-4565