

Sen. Jepsen asks Block to present USDA conservation package

WASHINGTON, D.C. — U.S. Senator Roger Jepsen (R-Iowa) has called on Agriculture Secretary John Block to personally present the U.S.D.A.'s comprehensive soil and water conservation policy package to the Senate Agriculture Committee.

In a letter to Block, Jepsen and Ag Committee Chairman Jesse Helms (R-N.C.) said the Secretary's presence would allow Ag Committee members to have a first-hand discussion on soil conservation policies that concern them. The U.S.D.A. was given the authority to make policy recommendations under the Soil and Water Resources Conservation Act of 1977.

"The importance of soil conservation policy and subsequent implementation of that policy cannot be understated," the Iowa Republican said. "We've already made some advances with the soil conservation provisions contained

in the 1981 Farm Bill, but we must continue to push for improved methods and incentives for saving our precious soil."

Jepsen, chairman of the Soil and Water Conservation Subcommittee had requested the U.S.D.A. formulate a comprehensive soil

conservation package before the end of 1981.

Jepsen has introduced a measure which would provide a ten percent investment tax credit for certain soil and water conservation expenditures. That bill

will be under consideration by the Senate Finance Committee at an October 23 hearing.

Anyone interested in providing statements to the Committee should call 202/224-4515 for more information as soon as possible.

(Specify that you are interested in bill number S.569.)

"The conservation of our soil is something everyone needs to be concerned with, for without it, further generations will be denied the lifestyle we so fervently cherish and protect."

Is poultry manure fertilizer worth spreading?

GETTYSBURG — The cost of commercial fertilizers has risen sharply in recent years due to increase in cost of petroleum. This has led to a renewed interest in animal waste and re-evaluation of its monetary value as a fertilizer.

Poultry manure as a fertilizer does have its limitations, however.

The nitrogen is only about one-half as efficient the first year while potash and phosphorus are about 85 to 90 percent efficient. This becomes an advantage in the second and third years when the

organic fraction decays and is slowly released in the soil. Also with its high phosphorus and potassium amounts, soil may become excessive with these two elements thus reducing crop

yields. Yearly soil testing becomes a must.

Using current nutrient prices, the following statistics provides a comparison of relative values of

various classes of poultry waste. These values were obtained from material from commercial poultry operations. They represent a moisture level from 25 to 40 percent.

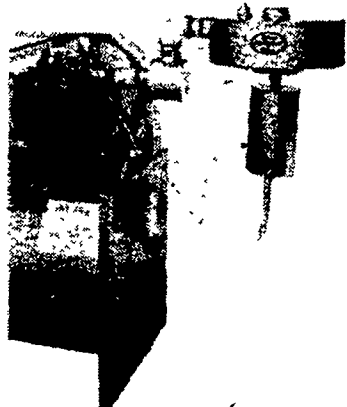
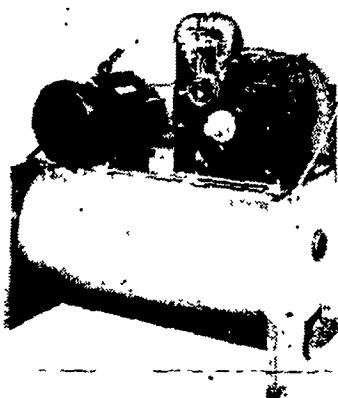
	\$/Lb	Turkey	Pounds/Ton	Broiler	Turkey	Value \$	Broiler
		Hen	Hen	Hen	Hen	Hen	Hen
N ₂	0.25	52.0	36.0	54.0	13.00	9.00	13.00
P ₂ O ₅	0.28	63.0	53.0	46.9	17.64	14.84	13.13
K ₂ O	0.13	42.0	31.0	30.0	5.46	4.03	3.90
Ca	0.03	25.0	75.0	29.6	0.75	2.25	0.88
Mg	0.04	7.0	6.6	5.8	0.28	0.26	0.23
Mn	0.60	0.4	0.39	0.4	0.24	0.23	0.24
Fe	0.22	1.32	1.54	1.1	0.27	0.34	0.24
B	2.50	0.05	0.04	0.04	0.12	0.10	0.10
Cu	2.10	0.25	0.05	0.08	0.52	0.10	0.17
Zn	0.68	0.24	0.30	0.29	0.16	0.20	0.20
Total		191.26	203.92	168.21	Total \$38.44	\$31.35	\$32.59

**ALL FARMERS...
DON'T MISS IT!! PAGE A-17**

Zero Masport Vacuum Pumps

FEATURING:

- 1 to 15 h.p.
- 10-136 CFM (ASME)
- 1 1/4" - 2 1/2" port
- Simple, rugged design
- Built-in rust resistance
- Slower speeds for longer pump life
- Visible oil flow to each bearing for easy lube adjustment
- High-grade, stress-relieved castings; precision machined



**Zero Super Saver™
oil reclaimer can
mean years of extra
operating life.**

Super Saver delivers up to 10 times the pump lubrication! On only 3 quarts of oil. You not only extend pump longevity, you cut noise and save big on oil — especially as oil prices climb. Pays for itself over and over.

**SPECIAL SALE ON VACUUM
PUMPS THROUGH OCTOBER**



Zero Manufacturing Company
Washington, Missouri 63090
U.S.A.
TEL. (314) 239-6721
Telex 44-2476



CONTACT YOUR LOCAL ZERO DEALER:

**Regional Sales
Manager**

Ray Kuhns
67 Roland Ave.
Chambersburg, PA 17201
717-264-3814

Distributors

PENNSYLVANIA

Byers Construction
D. Ray Byers
Chambersburg
717-369-4861

Donald Everitt
Mifflintown
717-436-2561

Marvin J. Horst
Lebanon
717-272-0871

**Simpson's Cooling
Service**
New Oxford
717-624-8568

W & J Dairy Sales
Oxford
717-529-2569

NEW JERSEY

Hockenbury Electric
Ringoes
201-782-5950

DELAWARE

Hiott Refrigeration
Wyoming
302-697-3050

MARYLAND

**Laurel Run Farm
Supply**
Grantsville
301-895-5567

Roop & Sons
Linwood
301-775-2127

WENGERS' FARM MACHINERY, INC.

NEW & USED FARM EQUIPMENT • USED CONSTRUCTION EQUIPMENT
251 SOUTH RACE STREET PHONE: (717) 866-2135
MYERSTOWN, PA 17067

LONG TRACTOR SALE

For those of you who wish, 20% down and balance in 1982 is acceptable if delivery is taken in 1982.

We encourage you to check the competition and make your decision.

Factory Freight, Dealer Service & Options (other than standard) are not included but are very reasonable if so desired.

P.T.O.	Horse-power	Model Number	Tire Size	Reg. Price	Sale Price	You Save
	24	260-C	5.00x15 12.4x24	\$ 7236	\$ 4795	2441
	24	260	5.00x15 12.4x24	7236	4795	2441
	28	310	5.00x15 11.2x28	7717	5222	2495
	28	310C	5.00x15 12.4x24	7789	5189	2600
	28	310-DT (4WD)	9.50x16 13.6x24	9083	6259	2824
	35	360-C	5.00x15 12.4x24	8288	5671	2617
	35	360	6.00x16 13.6x28	8856	6043	2813
	42	460	6.00x14.9 14.9x28	9855	6336	3519
	42	460 Shuttle	6.00x16 14.9x28	10866	6954	3912
	42	460-V	5.00x15 11.2x28	9127	5864	3263
	42	460-DT (4WD)	9.5x20 14.9x28	12773	8494	4279
	49	510	6.00x16 14.9x28	10554	6741	3813
	49	510-DT (4WD)	9.5x20 14.9x28	13638	8749	4889
	49	510-S Crawler		14620	7750	6870
	64	610	7.50x16 16.9x28	12423	8204	4219
	64	610-DT (4WD)	9.5x20 16.9x28	15656	10099	5557

The above mentioned sale price includes: 1 year warranty, base tractor, wheel variable, 12 volt battery, fuel efficient diesel engine and power steering, wide front-end, 3 point hitch, 540 PTO, diff. lock where available.