

YOU'RE INVITED TO AN **OPEN HOUSE**

AT THE

JOHN H. KRALL FARM

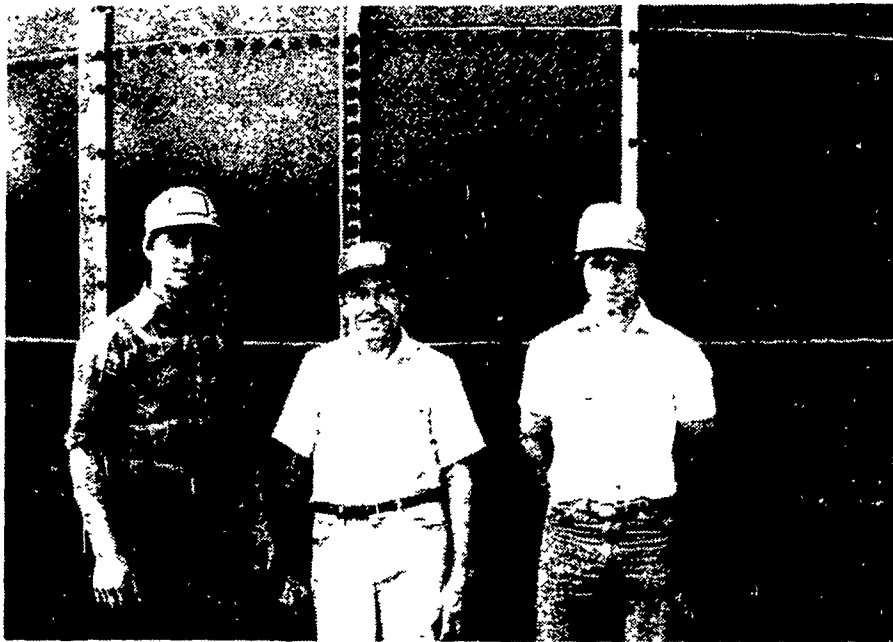
Lebanon, PA

**WEDNESDAY,
OCTOBER 28, 1981**

9 A.M. to 3 P.M.

— **FEATURING** —

- ★ **6219 SLURRYSTORE**
- ★ **Neseth Side-Mounted P**
- ★ **2087 HARVESTORE for H**
- ★ **2077 HARVESTORE for H**
- ★ **Moisture Corn**
- ★ **HARVESTORE forage We**
- ★ **Custom Built Rotary Bat**
- ★ **Mixer**
- ★ **Bou-Matic Milking System**



Tom (Son) John Krall Tim (Son)

DARI-KOOL DEC **BOU-MATIC**
COOLING SYSTEMS MILKING SYSTEMS

J & R SERVICE INC.
215 N. Cornwall Road
Lebanon, PA 17042

SALES - SERVICE — PLANNING

Richard M. Houser Sr.
Judith A. Houser

Commercial Refrigeration
Electrical Service

717-273-6232

Dauphin Deposit Bank
and Trust Company

LEBANON OFFICE
760 Cumberland Street
Lebanon, Pennsylvania 17042
717-272-2011



**PENN-JERSEY
HARVESTORE[®]
SYSTEMS, INC.**

P.O. Box 7, New Holland, PA 17557
Phone: 717-354-4051