

Nematode survey available to Md., Del. farmers

NEWARK, Del. — Farmers in Kent and Sussex counties, Delaware, are invited to participate in a nematode survey being conducted this fall by the University of Maryland and Delaware Agricultural Experiment Stations and Cooperative Extension Services.

Goal of the survey is 200 samples per county. Besides the two counties in Delaware, six in Maryland are involved. Samples are limited to corn and soybean acreage.

"We're encouraging extensive sampling in a four-acre block," says University of Delaware Extension plant pathologist Bob Mulrooney. Several four-acre blocks may be submitted from a single large field.

The limit is ten samples per farm, but farmers who till land on several farms may submit samples from each.

Samples will be evaluated by Loren Krusberg, nematologist at the University of Maryland. He and his staff will check for cyst-forming nematodes as well as larval types.

"Sampling can be done any time now, until the ground freezes — the sooner, the better," Mulrooney says. "While crops are still in the field it's easier to identify potential problem areas."

In Delaware, nematode assay information sheets are available from Extension offices in Newark 302/738-2506, Dover 302/736-4675, and Georgetown 302/856-5250. Submit samples you collect to your

county agricultural agent for testing. There is no charge for this service. Soil probes are available for use at each office, if you don't have one of your own. Sampling bags also are available there.

In collecting samples, follow this procedure:

Take soil and root samples from the edge of obvious damage areas in the crop row. Do not take samples from areas where plants are dead.

Sample at a depth of 8 inches in the row from 20 to 25 locations using a soil probe or spade. Samples should include roots and soil. Mix soil cores in a plastic bucket and immediately place 1 to 2 pints of soil in a plastic bag. Label bags with field number and location.

If possible, take samples from moist soil—neither too wet, too dry, nor frozen.

Protect samples from freezing, high temperatures or drying out. Do not add water. Samples should not be exposed to sun or left in a

closed automobile on the dashboard. Be sure to fill out information requested on assay information sheets and attach these to samples.

For further information call the Extension office.

Wayne DHIA banquet

The annual dinner meeting of the Wayne County Dairy Herd Improvement Association will be held Monday evening, November 23 at 7:45 p.m. in the Pleasant Valley Grange Hall. Roast capon will be served.

A highlight of the annual meeting will be awards presentations to dairymen who have made outstanding achievements during the past year. In addition,


John Creighton, County Agricultural Agent, will provide a slide presentation on the "Dow Study Tour", a trip he made through four mid-western states this past summer.

Tickets for the annual DHIA event can be secured at the Agricultural Extension Office, Honesdale, or from any DHIA supervisor.



GIGANTIC SELECTION
In Lancaster Farming's CLASSIFIEDS

MEMO
HAY, STRAW & EAR CORN SALE
EVERY MONDAY At 11 A.M.
NEW HOLLAND SALES STABLES, INC.
Phone 717-354-4341
Lloyd H. Kreider, Auctioneer



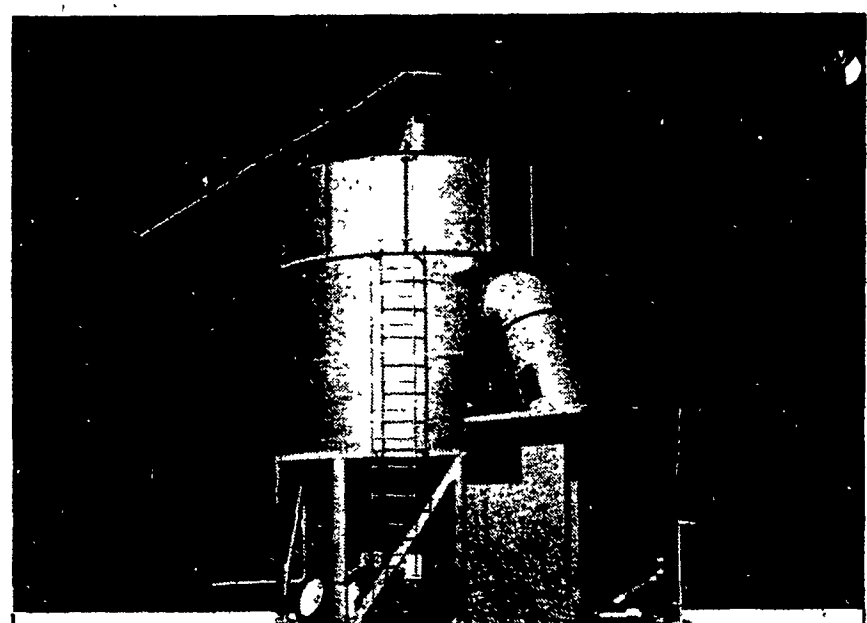
ALPINE PLANT FOOD

OFFERS A TOP QUALITY LIQUID PLANT FOOD AT ROCK BOTTOM PRICES.

- ★ Alpine minimizes expensive handling costs by utilizing farmer distributors.
- ★ Alpine eliminates expensive computer billing costs with cash accounts.
- ★ Alpine uses food grade ingredients for maximum availability and safety to plants.
- ★ Alpine is a neutral PH chlorine free plant food that will not rust equipment, freeze or settle out.
- ★ Alpine will deliver 9-18-9 for payment in Nov. for \$3.05 a gallon. Alfalfa plant food 3-18-18 delivered price \$3.35.

— Pennsylvania Distributors —

HAROLD WOLF Centre Hall 814-364-1349	GARY REPLOGE Bedford 814-847-2851	JAMES LANDIS East Greenville 215-679-2682
CLYDE BARTHOLOMEW Orangeville 717-784-1779	RICHARD WILSON Stewartstown 717-933-6101	



take control of your harvest

Unless you always have ideal Fall harvest conditions, it's time to consider the major advantages of owning a MORIDGE recirculating grain dryer

VERSATILITY—as a complete drying system, with no additional bins and augers necessary or, as part of a dryer system • Dries all types of grain • Choice of model 8330 (280 bu cap), 8440 (405 bu cap) and 8770 (712 bu cap)

HIGH CAPACITY—keeps you harvesting in conditions that stop other dryers • Unsurpassed wet grain drying capability

ECONOMY—lower initial investment • Substantial cost-per-bushel savings • Inexpensive to operate, service and maintain

MAXIMUM RETURN—lets you sell grain at peak market prices. • Recirculates grain as you dry for uniformly dried, top quality grain • Owners' report "pays for itself in only a few years"



MORIDGE MORIDGE MFG. INC. • BOX 810
MOUNDRIE, KANSAS 67107
TELEPHONE (316) 345-6301

See the Complete Line of Mordidge Grain Dryers at:




PENNSYLVANIA	Millerstown N. O. BONSALE & SONS	NEW JERSEY
Anville BHM FARM EQUIPMENT	Milton LANDIS FARMSTEAD AUTOMATION	Columbus REED BROTHERS
Brookville MENDENHALL DAIRY SUPPLY	Montgomery G.M. SHERWOOD	Hackettstown DONCHESKI BROTHERS
Carlisle PETERMAN FARM EQUIPMENT	New Berlinville ERB & HENRY EQUIPMENT	Plainsboro JEFFWELL FARMS
Centre Hall DUNKLE & GREIB	New Freedom S.S. SPICER	Ringoes D & R EQUIPMENT, INC.
Chester Springs NEVIN N. MYER & SONS, INC.	Pitman MARLIN SCHREFFLER	Shiloh FARM-RITE, INC.
Cochranston ALLEN HART	Quakertown C.I. WONSIDLER BROTHERS	DELAWARE
Hamburg SHARTLESVILLE FARM SERVICE	Quarryville GRUMELLI FARM SERVICE	Nassau THOMAS BEST & SONS, INC.
Honey Grove NORMAN CLARK & SON, INC.	Richland LEBANON VALLEY IMPLEMENT	MARYLAND
Lititz BINKLEY & HURST BROTHERS	Thorndale LAMB FARM MACHINERY	Great Mills COPPAGE IMPLEMENT
Mercer RALPH KYLE FARM EQUIPMENT	Tionesta LONG ACRE SALES & SERVICE	VIRGINIA
Mill Hill DUNKLE & GREIB	Williamsport RICHARD TEBBS FARM EQUIPMENT	Wytheville MODERN FARM EQUIPMENT
		WEST VIRGINIA
		Leon KEEFER'S SERVICE CENTER

DISTRIBUTED BY
HAMILTON EQUIPMENT INC.
Ephrata, PA

SAVE \$30 - \$60 PRE-SEASON SALE
Includes All Models

BOWMANS STOVE SHOP INC.
Follow Signs from Light at Hinkletown on Rt. 322
717-733-4973
R.D. 3 Napierville Rd., Ephrata, Pa.
Tues., Wed., Sat. 9-5
Thurs., Fri. 9-9
Closed Monday
Financing Available

Like money in the tank

Invest in a Calumet Vacuum Tank with soil injector.

Liquid hog manure can save you several thousands of dollars in commercial fertilizer costs. That's why it pays to invest in Calumet.


Pick the tank size that fits your herd—from 1180 to 4500 gallon capacities. Choose from three vacuum pumps—177 CFM, 247 CFM or 353 CFM—for fast filling. Select PTO powered at 540 or 1000 RPM or optional hydraulic motor drive.

Then put those liquid assets to work with a Calumet 2- or 4-shank soil injector. Injecting helps retain four times the nitrogen usually lost in surface spreading. And you'll reduce odor and runoff problems. You'll get long-term dividends too. Calumet tanks are engineered for years of efficient, low maintenance operation. Heavy duty steel alloy tanks are epoxy-coated to resist corrosion. Double reinforced A-frames and support skids add strength for heavy loads. All Calumet products are backed by a 12-month warranty.

So start profiting from the fertilizer produced on your farm. Get a Calumet vacuum tank and soil injector. It's a tank you can bank on.

USED EQUIPMENT
12' Better Bit Auger Pump
10' Badger Pump
8' Calumet Pump

CALUMET & NESSETH DISTRIBUTOR



F. ERNEST SNOOK
RD 3 - Box 84, Mifflinburg, Pa. 17844
Phone: 717-966-2736