

BUSINESS OPPORTUNITIES

Attention! Make up to \$50 per hour Put yourself in the pressure cleaning business Call 814-535-7607, ask for Tom. Or write to Chem Power, 1 Messenger St., Johnstown, PA 15902.

HELP WANTED

PFA, Pennsylvania's leading farm organization seeks insurance agents to work in Lancaster Co. We will help you get state license. Call 717-761-2740. Ask for Dottie

CONSTRUCTION FOREMAN AND LABORERS

• Knowledgeable in Carpentry And Construction
Call
TRIPLE H. CONST. CO.
Ephrata, Pa.
717-738-2142

Responsible married man with some experience seeks long term employment to learn all aspects of beet, dairy or pig operations. 215-485-6103

Conscientious, considerate individual will pay cash for hunting privileges. Pheasant, Deer or both Preter Lancaster or Bucks County area. Penna only Call collect 215-355-7060

Farm family would like to work on hog or beef farm on a salary basis, Lancaster, Ephrata or New Holland area. Send reply to Box 366 J-197, c/o Lancaster Farming, Lititz, PA 17543

Honors graduate, BS Science, completed vet-tech program New Bolton Center, seeking animal experience before entering veterinary school. Write Lancaster Farming, Box 366 J-198, Lititz, Pa 17543

Father and son team wanting to manage a large beef and crop farm or a large dairy farm. Experienced with large operations, education, extensive agriculture and farm background. Excellent references. Write Lancaster Farming Box 366 J-196 Lititz, PA 17543

Ambitious, young, experienced dairyman seeking position with management on dairy farm. References available. Non-smoker and non-drinker.

Write
Lancaster Farming
Box 366 R-79
Lititz, PA 19543

POSITION WANTED
Wanted position as working manager, have dispersed my registered and grade Holstein herd, 17,000 lb. RHA excellent in herd health. Calf mortality "0" since October 1978. Prefer stall set-up w/large responsibilities. Available immediately, married w/family. For more particulars Call 201-782-1679.

BUSINESS OPPORTUNITIES

1979 GMC 7000 series hay truck Special hay body. Holds up to 450 bales. Also selling small business. Excellent opportunity for right person. Call for information. 215-588-1697

For Sale - Thriving hay business with established repeat customers, dealing in Pa., Md., Va includes 2 tractor trailer rigs, 1 straight truck and all accessories. Established business. Will sell for value of equipment, \$35,000. Write Box K-18, c/o Lancaster Farming, Lititz, Pa. 17543

ATTENTION YOUNG FARMER

That might be interested in getting started in a good paying poultry operation 8 room farm house good poultry building & 8 acres of ground. Excellent opportunity for a young ambitious man or father-and-son operation. Adams Co

717-528-4281

WANTED

Self motivated individual for direct to farm route sales. Excellent earnings potential. Company sales training program Unusual opportunity to join an aggressive, dealer minded organization. Openings in Bedford, Blair, and Union Counties.

Contact
Larry Hughes,
I.B.A. of Central PA
717-263-1965

TRUCKS & TRAILERS

1977 - 721 Bob Cat Diesel Skid Loader \$5975.00
1975 Owatonna 1000 Bob Cat \$3500.00
1975 - Case 1740 Diesel Bob Cat \$4500.00
CURRY SUPPLY
Curryville, Pa.
814-793-2829

REEDMAN CHEVROLET TRUCK SALES & SERVICE
ACRES OF NEW CHEVY TRUCKS PLUS DISCOUNTS OFF OF MANUFACTURERS SUGGESTED LIST PRICE 1900 NEW & USED TRUCKS & CARS
U.S. ROUTE 1, LANGHORNE, PENNA.
215-757-4961

THIS IS A SUPPLEMENT TO OUR REGULAR LARGE AD.

| | | | |
|--|--------|--|--------|
| 75 DATSUN Spd Pickup 4 Cyl 4 Spd Man Trans Man Str, PB Stero Bumper Body Topper FM Etc No Air Cond 66 699 | \$2799 | 79 CHEV 10 CARGO VAN 6 Cyl 3 Spd Man Trans PS Man Brks Stereo Etc No Air Cond 40 779 M Cond 18 499 M | \$4599 |
| 78 PLY VOYAGER WINDOW VAN 10 Fleet V8 AT PS PB 2 Rear Seats, Chrome Bumpers AM Etc No Air Cond 59 36 M Stk 5198 | \$3499 | 79 CHEV CUSTOM DLX 10 Fleet Side Pickup 6 Cyl 3 Spd Man Trans PS, PB Step Bumper FM Body Topper, Etc No Air Cond 37 649 M Stk 0121 | \$4699 |
| 77 DODGE TRADESMAN 200 CARGO VAN V8 AT PS PB Side Dr, Class AM Etc No Air Cond 61 762 M Stk 5632 | \$3699 | 79 FORD F150 Ranger XLT Side Side Pickup V8 AT PS PB Two-Tone Paint Step Bumper FM Etc No Air Cond 18 499 M Stk 9682 | \$4899 |
| 77 DODGE STREET VAN V8 AT, PS PB, Roof Vent Portholes Mag Whls AM Etc No Air Cond 26 275 M Stk 8810 | \$3999 | 79 CHEV 10 CARGO VAN 6 Cyl AT, PS PB Roof Vent FM Etc No Air Cond 33 173 M Stk 4351 | \$5199 |
| 77 CHEV 10 Sport Window Van, 6 Cyl, AT PS PB Two-Tone Paint Stereo AC, Etc 29 785 M Stk 0136 | \$4499 | 80 CHEV CUSTOM DLX 10 Fleet Side Pickup V8 3 Spd Man Trans PS PB, Step Bumper Etc - No Air Cond Used 22 633 M Stk 5278 | \$4999 |
| 77 CHEV CARAVAN CARGO VAN V8, AT PS PB, Panelled Inter., Stereo AC, Etc 50 768 M Stk 9482 | \$4599 | 80 CHEV LUV MIKADO Spd Pickup 4 Cyl 4 Spd Man Trans Man Str PB Step Bumper, AM Body Topper Etc No Air Cond, Used 2 595 M Stk 0173 | \$5599 |
| 78 CHEV CUSTOM DLX 10 Fleet Side Pickup V8, AT, PS Man Brks Sliding Rear Window Step Bumper FM Etc 73 943 M Stk 9569 | \$3599 | 80 DODGE 200 WINDOW VAN 6 Cyl AT PS PB Rear Seat AM Etc No Air Cond, Used 17 183 M Stk 0158 | \$5999 |
| 78 DODGE RAM CHARGER Utility W/Top 4 Whl Dr, V8 AT PS PB Two-Tone Paint Rear Seat AM, Etc No Air Cond, 39 673 M Stk 8407 | \$4799 | 80 FORD ECONOLINE 150 CHATEAU Window Van V8 AT PS PB Privacy Glass Captains Chairs, AM AC Etc Used Previously Leased Vehicle 23 691 M Stk 8587 | \$6899 |
| 78 CHEV CHEYENNE K5 Blazer Utility W/Top 4 Whl Dr V8 AT PS PB Two-Tone Paint Rear Seat Stereo AC Etc 50 213 M Stk 8531 | \$5499 | 80 PLY SPT VOYAGER 150 Pass Maxi Window Van V8 AT PS PB Two-Tone Paint Stereo AC Etc Used 40 129 M Stk 4447 | \$8499 |
| 78 CHEV CUSTOM DLX 30 Dump Truck V8 AT, PS PB Dual Rear Whls, Etc No Air Cond 29,906 M Stk 4355 | \$6799 | 81 CHEV 10 CARGO VAN 6 Cyl 3 Spd Man Trans PS Man Brks R&H Etc No Air Cond Used 17 509 M Stk 8823 | \$5999 |

PRICE EXCLUDE SALES TAX AND MV FEES.

TRUCKS & TRAILERS

'80 GMC 3/4 ton pickup, 350 auto, PB&PS, 19,000 mi, \$5,350. 717-859-3291 or 733 4884

31 Gooseneck stock trailer 2 axle (10,000 lbs. each) dual wheels, 4 compartments 1976 Chevy C60 flatbed truck rigged to pull trailer Will sell as a unit or separately. 717-964-3598.

For Sale - '63 school bus with farm registration, used to haul pigs, best offer 215-926-3167, Bernville.

1974 GMC truck 6500 series, 30,000 GVW 427 cu" engine, 20' bed, air brakes, no rust, very good condition \$5500 717-433-4331 or 717-433-4363.

Wanted - Late model tandem axle medium duty 20' dump truck (no stretch frames) in good condition, medium miles and reasonable 717-896-8242

For Sale - grain truck, 1958 int model 180, 14 platform dump, twin piston hoist, good condition, asking \$1800 Call after 7 p.m. 215-562-4220

1974 Chev model 60 15 ft dump 825-20 tires Good \$3400 1956 Chev dump 8 ft box 825-20 tires \$700 Tag along trailer, tandem axle \$800 717-253-4106 or 717-253-3916

For Sale - 1966 GMC 237 diesel, twin screw, 18' J&J grain body w/barn doors, \$9500 or best offer Wanted to buy - 30' steel dump trailer, tandem axle, will trade for GMC. 717-872-1190 or 392-5278.

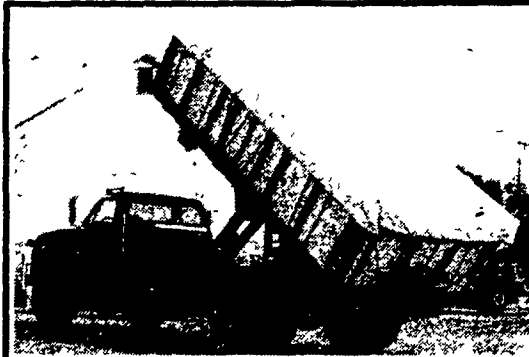
Kruger 24' gooseneck flat trailer, 1980 model, 3 axle, 10 ton, in perfect shape, exc for hauling hay, straw and equipment, \$5000. Alter 9 p.m. 703-854-5817

For Sale - 1973 Ford pickup F-250, V-8 auto, good condition, asking \$950. Call after 7 p.m. 215-562-4220

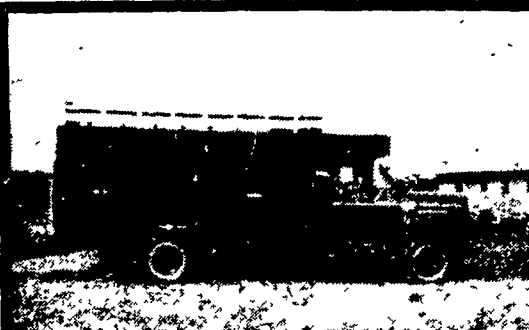
1973 John Deere 740 Log Skidder \$25.00
540A Skidder \$9500.00
Tree Farmer 225 \$8500.00
360 Tree Farmer With Grapple \$8500.00
310 Case With Winch \$4500.00
Cat D-6 Hydraulic Blade 8U \$7500.00

CURRY SUPPLY

Curryville, Pa.
814-793-2829



1975 Dodge D-800 16' dump truck. 16' bed w/new 42" sides Custom fitting tarp. 4-13 engine, 5x2 speed transmission, 10x20 rubber 10 ton mid equipment hoist Air brakes, 59,000 miles Call evenings 717-394-2752



1978 GMC CATTLE TRUCK
15-ft. bed,
V8, 350 Engine, 6000 Series
717-529-2614

OSTERLUND TRUCK SERVICES, INC.
450 ALLEN ROAD, CARLISLE, PA 17013
PHONE: 243-2100 or 238-4306



8 UNITS AVAILABLE FOR IMMEDIATE DELIVERY
1977 through 1979
IHC, S-Model, Loadstar

217" Wheelbase
149" CA
L Reinforced frame
404 V8 Gasoline engine
7,500 pound Front axle
16,160 pound Rear axle
Five (5) speed trans.
Hydraulic front and rear brakes
9.00x20 Front and rear tires
23,600 pound Gross vehicle weight rating
PRICED FROM \$6,500 TO \$7,500

Standard steering
AM Radio
17,000 pound Rear suspension
Bench seat
5.57 Rear axle ratio
14" Clutch
59 Gallon fuel tank
Standard alternator
Standard battery
Excellent condition
No rust

Tough, Dependable Farm Bodies & Hoists

Omaha Standard

FARMERSVILLE EQUIPMENT INC. Ph. 717-354-4271

TRUCKS & TRAILERS

1968 Diamond Reo diesel 15' dump, 500 bushel, 52,000#, Centre, 814-355-3553

1971 Chevrolet C-50 truck w/16' flat bed body w/side. Excellent shape. \$3000. 301-363-0631.

TRUCKS & TRAILERS

Cummins 220 Diesel Motor, excellent condition \$800. 301-829-0271

1974 Chevy Titan 90, Cab over sleeper, diesel, w/24' aluminum cattle body Excellent condition. Lots of extras. Call for details 717-437-2721



Tri-Axle Goose Neck Stock Trailer with removable double deck 7 1/2' wide 20' hauling deck.

Call
DENNIS L. GRUMBINE
RD #2 Myerstown
717-866-6218
Price \$3850.00

LANCASTER
1710 Rohrerstown Rd.
717-569-2648
YORK
1116 Roosevelt Av.
717-848-6400

USED TRUCKS EXCEPTIONALLY CLEAN AND WELL MAINTAINED

1977 FORD ECONOLINE E250
300 cyl. engine, auto trans. radio, new paint.
1976 & 1977 CHEVROLET 12' STEP VANS P30
Matched Fleet - Will sell one or more, etc., 350 V8 engine, 4 speed transmission, dual rear wheels, aluminum bodies, with or without new paint.
1975 CHEVROLET 20' & 22' VANS TE67
with or without lift gates, 366 V8 engine, 5 speed or automatic transmission, power steering, radio, new paint.

USED TRACTORS

1975 CHEVROLET Titan 90
Tandem axle diesel sleeper, 318 Detroit engine, 10 speed transmission, PS, AC, with or without new paint.
1975 CHEVROLET Titan 90
Single axle diesel sleeper, 238 Detroit engine, 10 speed trans., PS, A/C, just overhauled, with or without new paint.
1976 PETERBILT 352S86
Tandem axle diesel sleeper tractor, 350 Cummins engine, 13 speed transmission, power steering, A/C, recent overhaul.
1977 GMC JC 9640
Tandem axle diesel, conventional cab, NTC 290 Cummins engine, 10 sp. trans., 38,000 rear axle, PS, AC, low mileage

USED BODIES

14' REFRIGERATED VAN BODY
1975 Duralite aluminum smooth skin, extruded aluminum floor, new paint, XMT20D thermoking unit with electricity standby.
Complete maintenance records available for inspection. Other makes, Models & types to choose from.