

## Hunter's Auction

Monday, October 12  
Rising Sun, Md.

Report supplied by auction

**BULLS:** 1600-1860 lbs. 55.00.  
**COWS:** High Choice to Prime 44.25-45.50; Good to Standard 42.75-44.00; Utility 41.75-42.00; Cutters 40.75-41.00; Cannors 38.00-40.25.  
**CALVES:** Prime 180-220 lbs. 82.00-89.00; High to Choice 140-180 lbs. 76.00-87.00; Good to Choice 120-140 lbs. 72.00-84.00; Standard to Good 90-115 lbs. 57.00-72.00; Utility 75-85 lbs. 55.00-67.00; Low Utility 65-75 lbs. 42.00-54.00.  
**FEEDER PIGS:** \$18 to \$27 by hd.; 35-45 lbs. \$32 to \$39 by hd.  
**HOGS:** 180-220 lbs. 46.00-47.50.  
**SOWS:** 40.50-42.00.

## St. Louis Sheep

Wednesday, October 14  
Report supplied by USDA

Receipts about 400 head. Compared last Wednesday, slaughter lambs 1.00 to mostly 2.00 higher. Light supply feeder lambs 1.00-2.00 higher. Supply mostly woolled and shorn slaughter lambs.  
**SHORN SLAUGHTER LAMBS:** Choice and Prime 96-120 lbs. with No. 1-2 pelts 53.50-57.00, mostly 55.50-57.00.

## WOOLED SLAUGHTER

**LAMBS:** Choice and Prime 82-114 lbs. 52.00-55.00 Choice 88-104 lbs. 47.00-52.00. Few lots mixed Good and Choice 69-90 lbs. 44.00-47.00.

**FEEDER LAMBS:** Small lots Choice and Fancy 67-83 lbs. 46.50-48.00. Few Choice 60-75 lbs. 42.00-45.00.



## SHOW TIME IS HERE New Holland Sales Stables Annual Show and Sale WEDNESDAY, OCTOBER 28

Show 9 A.M. Sale starts at 11 A.M.  
Show winners sell at 12 Noon

250-300 head of selected dairy cows and first calf heifers.

Again this special sale will feature some of the best Registered cows selected from herds in PA, MD, NY state and Canada. Many with records and good pedigrees. Most cows will be fresh or close springers.

Attention Dairymen: Don't miss this sale if you need cows Purebred and Grades. In past years many good cowmen have commented on the quality of cows at this event. You have never seen this many good cows in one barn.

Classes to be judged at 9 A.M.

- #1 Fresh Holstein cow
- #2 Dry Holstein cow
- #3 Fresh 3 year old
- #4 Dry 3 year old
- #5 Bred 2 year old heifer
- #6 Fresh 2 year old heifer
- #7 Mixed breed dry (includes red and white Holsteins)
- #8 Mixed breed fresh (includes red and white Holsteins)

Official judge: Ed Frey, owner of Fair Hill Farm, MD.

Managers: Norm Kolb, 717-397-5538 and Abe Diffenbach, NH office phone 717-354-4341

## ANTIQUE AUCTION SUNDAY, OCTOBER 25, 1981 11 A.M.

At Green Acres Auction... Located along Rt. 248 between Berlinsville & Lehigh Gap. Approximately 15 miles north of Allentown, Pa.

PHOTO BROCHURE & LISTING AVAILABLE BY REQUEST. Many fine, unusual & rare items including: Furniture; Glassware; Toys; Trains; Antique Cars & Farm Tractor; Musical Instruments; Photographic Items; Coins; Guns; Coffin; 1841 Dated Coverlet.

**GREEN ACRES AUCTION**  
Herman L. Green, Auctioneer  
4806 S. Cypress Road  
Walnutport, Pa. 18088  
Phone: (215) 767-5996

## PUBLIC AUCTION

Valuable Surplus  
Equipment & Furnishing  
Oregon Hill Ski Resort  
Oregon Hill, Lycoming Co., Pa.  
**SATURDAY, OCTOBER 24**  
11:00 A.M.

Including the following items: 8' single cutmulcher, 25 bundles hard slab wood, 10 50 ft. lengths 1" H.P. hose, 2-8'x8' sliding garage doors, 3-8'x8' roll, w/doors & hardware, 3 pcs. 3" steel galvanized pipe, 2000' used 5/8" cable, 28' Vega tandem axle camper trailer, 15 round patio tables with umbrella hole, 40 steel patio chairs, 10 screen doors, 200 aluminum screens, Hotpoint elec. stove, 1/2 h.p. air compressor, Cory coffee maker for 5 pots, 3 Maytag elec. dryers, 3 used elec. ovens, 3 Sahara gas dryers, comm. coin operated, 50 alum. storm windows, 20 inside doors, 10-6x6x20 panta treated posts, 20 outside doors, 4 heavy duty fire place screens, 1 glass front set, snare drum, stainless, like new, 4 metal cabinets, 20 plate glass windows with frames, wall mount Tappan oven, 15-45 gallon water heaters, electric, 40 storage file boxes, 1000 - corrugated boxes 24"x10"x10" 1-20 h.p. elec. motor with reducer, misc. furniture aluminum frame room dividers, pipe fittings, 8' fluorescent lights, 6-2000 watt wall heaters, 3-2000 watt under floor heaters, 6-1000 watt wall heaters, sofa beds, 3 kitchen sets, numerous misc. kitchen chairs, 1 Bain Marie, steel chunk stove, bun warmer, soup maker, misc. furniture, 1/2 h.p. Craftsman drill press, also numerous valuable items not mentioned.

Sale by,  
**OREGON HILL SKI RESORT**  
RD 1 Morris, PA 16939  
PH. 353-7521

*E.M. Murry Associates*

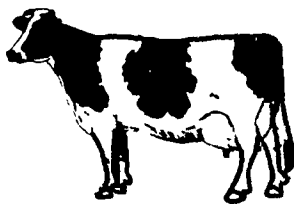
287 Lime Rock Road  
Lititz, PA 17543  
Elmer Murry 626-5244 - 626-2636  
Richard Murry 626-8175 - 949-2280  
Ken Miller 665-2073  
Professional Auctioneers,  
Appraisers, and Advisors  
Since 1953

## MONTHLY DAIRY CONSIGNMENT SALE

Our Monthly Consignment Sale  
will be held

**WEDNESDAY NIGHT,  
OCT. 21, 1981**  
At 8 P.M.

We expect a good run of close and fresh cows,  
also open and bred heifers.



## CONSIGNMENT OF ONE ENTIRE DAIRY OF 75 HEAD HOLSTEINS

Consisting of 43 cows, 10 Bred Heifers. 22 heifers from calves to breeding age, including 5 Registered Cows, many Identified Grades. All bred to A.B.S. Sires. D.H.I.A. Records up to 20,000 lbs. m., 900 F. Ten cows recently fresh, 10 cows due from now to December. Balance bred for late winter or spring. Pregnancy examined, eligible for interstate shipment. Dairy can be seen any time Tuesday afternoon and Wednesday.

For further information on dairy, please call Roy Andrus, 717-297-3580 or George Scott, 717-297-2804.

All animals consigned must be accompanied by a health chart.

TERMS: Cash or Good Check.

**VALLEY STOCK YARDS INC.**  
Route 199, Athens, Pa.  
Phone 717-888-9333

Restaurant Will Be Open

REAL ESTATE

REAL ESTATE

## EASTERN NEW YORK OFFICE

**NEW FREE STALL FARM IN BOSTON MARKET:** 365 acres, 200 tillable, 100 pasture. Consistently grows 25 ton silage/acre, 4 cuttings alfalfa. (Cornell tests 24% protein) New 90 cow barn has double 6 parlor w/automatic take-offs, 5 silos including 20x50 & 20x70 Harvestors, manure system w/ram pump. Heifer barn for 50 Two older homes, both excellent condition 110 milkers, 70 young stock. 6 large newer tractors, 715 IH Combine, long line of modern machinery. JUST LISTED AT \$750,000 CALL SLOANVILLE HEADQUARTERS: 518-875-6355.

## CENTRAL NEW YORK STATE

**STOCKED & EQUIPPED ONE-MAN DAIRY:** 200 acres-in center of Otsego County, top honeoye soil here Barn accomodates 39 milkers has dump station, cleaner, silo Pole barn. Home has 8 rooms, new furnace plus wood stoves Not fancy Includes 38 Holstein milkers, 38 heifers. 4 tractors & machinery for \$200,000. Many others

## SOUTHERN NEW YORK OFFICE

**LARGE CASH CROP FARM IN LAKE COUNTRY:** 1540 acres, 1296 tillable. Predominately Honeoye and Lima soils 2800 foot FAA approved airstrip with lights Nice main home plus small cottage. Storage barn, several out buildings. Hangar for 6 planes with apartment overhead JUST LISTED.. MANY OTHERS; LARGE AND SMALL FREE LISTS

## ST. LAWRENCE VALLEY OFFICE

**UNBEATABLE PRICE...ONLY \$260/ACRE INCLUDING BUILDINGS:** 230 acre riverside farm has 135 tillable, about 25 acres of woods, balance pasture. Good 10 room home has oil hot air furnace and attached garage. Concrete silo, but no barn. Ideal for beef. \$60,000 with possible owner terms. CALL GOUVERNEUR OFFICE: 315-287-4163.

"THE NEW DAIRY CATALOGUES ARE READY"...WRITE WIMPLE REALTORS, SLOANVILLE, N.Y. 518-875-6355

## Bradford-Sullivan

(Continued from Page A35)

Mazza also praised the Bradford-Sullivan Energy Group, a body of 73 landowners holding well over 15,000 acres, for being the largest group in the United States, as far as he knew, to organize for the purpose of collectively negotiating for better oil and gas leases.

He strongly advocated that landowners should not sign the typical gas and oil leases currently being peddled by landmen throughout the northeast. A poor lease will reduce the property value more than the cash received, Mazza said.

A deadline for the closure of membership into the Bradford-Sullivan Energy Group will be declared soon, Mazza continued, the larger the group, the better the bargaining power will be.

Kevin Ferris, president of the 968 farm family organization, introduced Chris Wolfe, chairman of the political action committee called FARMER. Wolfe, of Millville, state director of PFA, appealed to the farmers to be aware of the importance of electing officials sympathetic to farming problems.

Gail Bacon and Duane Beech, both from Bradford County, each spoke briefly about their trip to Lockhaven in June to the PFA Youth Conference.

Darcy McCarty, Sullivan County Dairy Princess, and Jean Sheeley, Bradford County Dairy Princess, gave short reviews of their activities.

Mrs. Annette Schucker was also honored for her past work as vice president of the Bradford-Sullivan board, and her service on many committees. Schucker recently

resigned from the board to take a position on the state ASC committee.

Membership chairmen, Milford Kinsman and Perl Shores, were awarded with gifts for conducting a successful 1980-81 membership campaign. Kinsman reported that a record of 40 new members had joined recently and many more were expected because of the membership in the Bradford Sullivan Energy Group.

Mrs. Jean Tiffany, member of the PFA Women's committee, reported on the committee's activities, and her husband Fred, state director, spoke briefly about the PFA position on water use and animal rights.

Jeff Patton, PFA Regional Organization Director, commended Kevin Ferris for his service as president for two years.

Fourteen resolutions were discussed and voted upon under the leadership of Carl Gore, policy development chairman. Seven of the resolutions concerned milk, and related dairy issues.

New directors elected for a two year term were Rodney Babcock, Duane Lewis, David Moon, James Warburton, and Duane Wilcox.

Roger Madigan, state representative from Bradford County, Russell Gunton, district director from the Department of Agriculture, and Orville Yoder, Bradford County Extension Agent, were also introduced.

The Bradford-Sullivan County Farmers Association is a part of PFA, which is affiliated with the American Farm Bureau, the largest general farm organization in the nation.

## Poultry meeting is Oct. 29

**LANCASTER** — The annual banquet meeting of the Lancaster County Poultry Association will be held on Thursday, October 29 at 6:30 p.m. at the Historic Strasburg Restaurant.

The evening promises to be very entertaining, featuring the "Bob and Vera Kensingner Comedy Act". A brief business meeting will include the election of four directors.