

Public Sales Register

Closing Date - Monday, 5:00 P.M. of each week's publication

SAT NOV 7 - 1 P.M. Public Sale of 95 acre farm at intersection of Rt 15 and 54, west 1 mile on right (Lycoming County) Terms by Joseph L. Beiler Ken Welsh, Auctioneer

SAT NOV 7 - 9 A.M. Public Sale of Antiques, Collectibles, Tools and Other Personal Property Located at 526 Chestnut St., Hegins, Schuylkill Co., PA., 6 mi. west of I-81, Exit 34. Estate of Guy A. Geist George and Mike Deibert, Auctioneers

MON. NOV 9 - 2 P.M. Danville Livestock Market, cattle and hog auction. Located Old Route 11, Danville, PA. Melvin M. Lehman, owner

TUES. NOV 10, 1981 - 11:00 A.M. Rinehart Farms Registered Holstein Sale. At Taneytown MD between Littlestown, PA and Taneytown MD Watch for signs John W

Rinehart owner. R Austin Backus Inc Mexico, NY sales managers.

TUES. NOV. 10 - 7 P.M. Feeder Sale located at Carlisle Livestock Market just off I-81 exit 12

TUES NOV. 10 - 10 A.M. Public Sale of Valuable Farm Equipment, Harvestore Silos, Household Goods, Trucks and Jeep Cherokee Located south from Kutztown on the (Noble St. Lyons Rd.) past Fire Co. Bldg., turn onto Coffee Lane to 1st farm, Berks Co., PA. Irwin and Marian Fink. Ralph W. Zettlemoyer Auction Co., Inc.

WED., NOV 11 - 7:30 P.M. Yearling Steer Sale. Located at 1044 Edom Road, Harrisonburg, VA. Shenandoah Valley Livestock Sales, Inc.

THURS. NOV. 12 - 1 P.M. Public Sale of Real Estate. Located in the Village of Weishampole, Barry Twp., Schuylkill Co., PA, 4 mi. northeast of Hegins, take Rt. 125 north to Deep Creek Rd., turn east of

Weshampole or 7 mi. west off I-81, Exit 35, take Rt. 901 north to Deep Creek Rd. and turn west to Weishampole. Estate of Sarah E. Kahres. George and Mike Deibert, Auctioneers.

THURS. NOV 12 - 11:00 A.M. located in Cumberland Co. 3 mi north of Newburg Rt. 997, 1/2 mi east of exit 15 off PA turnpike. Complete dairy herd dispersal Richard & Mary Grace Gardener owners Newburg, PA Sale managed by Kling's Auction Service.

FRI NOV. 13 - 6:30 P.M. Fall Heifer Sale consisting of 200 to 300 Open Bred and Springing Heifers to be held at the Belleville Livestock Market, Belleville, Pa. Mark Glick, Auctioneer

FRI. NOV 13 - 5:30 P.M. Gap Auction. Antiques and Household Goods sold at every auction. Located off Rt. 41, Lancaster Turkey Hill Minit Market, cross RR bridge, Ira Stoltzius & Son, Auctioneers.

SAT. NOV 14 - 11:30 A.M. Public Auction of 52 acre Farm, Farm Equipment and Personal Property. Located in Ringtown Valley, Union Twp., Schuylkill Co., PA,

from Ringtown Borough right at first macadam road, go to second farm. Peter and Barbara Boyer, Owners. Deibert Auctioneers.

PUBLIC SALE THURSDAY, OCTOBER 22, 1981 10 A.M.

FOR: Pletz Trucking Inc., 1251 Wayne Ave., Reading, Pa.
Everything Sells to the Highest Bidder.

TRUCK TRACTORS:

76 Peterbilt 359-F19, (2) 76 Peterbilt 359-S19, 73 Autocar AB, 74 IHC COF4070A; REEFERS: (10) 70 Trailmobile 40'; VAN TRAILERS: (4) 79, (4) 78, (4) 77 Trailmobile 40'; (3) 76 Ohio Body 40'; (3) 76, (3) 75, (2) 73 Trailmobile 40'; STRAIGHT TK.: 78 Ford LN600; VANS & CAR: 74 Chev. Step Van; 77 Chev. Van; 80 Buick Sdn.

GARAGE/SHOP FACILITY & OFFICE TRL.

145'x115' Lot w/75'x75' Garage/Shop Fac. & 12'x60' Office Trl. (*Subject to owners confirmation).

MISC.

Refrig. Units, Tubeless tires, Misc. tires, rims & spacers.
TERMS: Complete Payment Sale Day In Cash or Guaranteed Funds Only. Garage Terms: 10% down, Settlement 120 days.
Write or call for descriptive brochure:

Vilsmeier Auction Co., Inc.
Rt. 309, Montgomeryville, Pa. 18936
Call 215/699-5833



SATURDAY, OCTOBER 24
Starting at 10 A.M.

Loc.-Numedia R.D.1 (Elysburg) off route 42 South to Catawissa to Bear Gap Mt. Road (Follow auction signs).

Oliver 550 tractor, Oliver 60 row crop tractor w/mounted cultivators, 2 bottom 12" Oliver plows, 1958 Dodge 300 truck w/alum. box, 2 & 4 section harrow, 6' disc, 14 hole Ontario drill, 2 row Oliver corn planter, N.H. crimper, Mt. cultivators, potato grader, elec. potato cutter; straw cutter, fanning mill, sickle bar mower; S.D. hay rake, twin blade bush hog, N.I. manure spreader, 20' portable grain elevator, corn sheller, 8' wood wagon box, rear mount drag blade, walking potato plow, 1/2 h.p. air compressor, 2-4 wheel farm wagons, chicken crates-nests & 2-16' automatic waterers (elec.), potato crates, double & single trees, wagon tongues, log sled, platform scales, grind stone, coal parlor stove, 16' alum. ext. ladder, SCRAP PILE, wheel barrel, Hooiser Cupboard, & many unlisted items.

Terms-Cash.

Seller:
ANNE MORAN

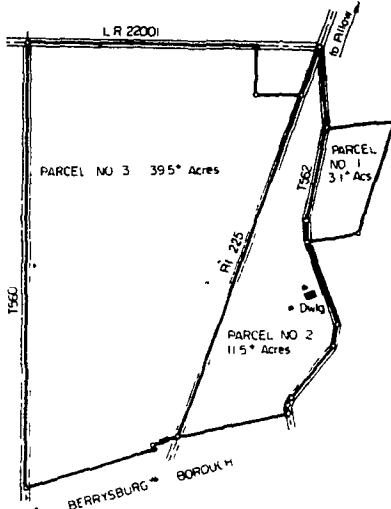
Auctioneers-John Autotore
784-3506
John Jr. 784-0381



PUBLIC SALE

SATURDAY, NOVEMBER 7, 1981
AT 12:30 P.M.

LOCATED APPROXIMATELY 40 MILES NORTH OF HARRISBURG, PENNSYLVANIA, 1 MILE NORTH OF THE BOROUGH OF BERRYSBURG, ALONG ROUTE 225.



REAL ESTATE

FARM - 54 ACRES, MORE OR LESS, SITUATE IN THE LYKENS VALLEY, MIFFLIN TOWNSHIP, DAUPHIN COUNTY.

PARCEL NO. 1: Consisting of 3.1 acres, more or less, having frontage along Township Road T562 on the West side.

PARCEL NO. 2: 11.5 Acres, more or less, having frontage along Route 225 on the West Side, frontage along Township Road T562 on the East side. Having thereon constructed a 2 1/2-Story Frame House with 7 Rooms and Assorted Out-Buildings.

PARCEL NO. 3: Consisting of 39.5 acres, more or less, having frontage along Route 225 on the East side, frontage along L. R. 22001 on the North side, frontage along Township Road T562 on the West side.

Parcels will be offered individually and as a unit at 1:00 P.M. For additional information or inspection, phone 717-758-6004.

ANTIQUES & COLLECTIBLES

2-Pc. Oak Bedroom Suite; Kitchen Cabinet; Oak Dresser with Unusual Mirror; Set of 4 Pressed Back Chairs; Oak Wash Stand with Mirror and Towel Rack; Soft Wood Solid End Wash Stand; Oak Sideboard; Decorated Cottage Bed; Oak Square and Round Stands; Library Table; Gold Leaf Hanging Wall Mirror; Etc.

HOUSEHOLD ITEMS

G. E. Refrigerator; Perfection Kerosene Heater; Kerosene Stove; RCA Television; 5-Pc. Dinetto Set; Wooden Lawn Furniture; Assortment of Dishes, Pots and Pans; 35' Aluminum Extension Ladder; Assortment of Hand and Garden Tools; K Mart Rotary Lawn Mower; Kleen Rotary Lawn Mower; Etc.

MCCORMICK FARMALL CUB TRACTOR WITH PLOW, ROTARY GRASS CUTTER, HARROW AND BLADE

TERMS: REAL ESTATE - 10% down. Further terms and conditions to be given the day of sale. Personal property - Cash. Personal checks accepted only from persons having an established account with auctioneer.

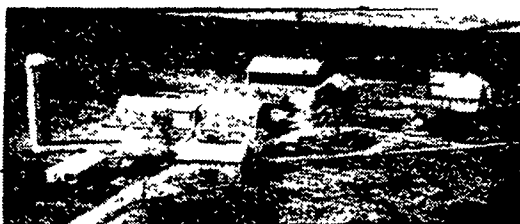
DONALD L. KOCHER AND DOROTHY SNYDER, OWNERS

EARL RICHARD ETZWEILER, ATTORNEY
DOCKEY & DOCKEY, AUCTIONEERS
DEPPEN, APPRENTICE



PUBLIC AUCTION COMPLETE LIQUIDATION SALE Valuable 110 Acre Farm in Beautiful Lykens Valley FRIDAY, NOVEMBER 6 AT 9:00 A.M.

Located at 326 Lebo Rd. approx. 1/2 mile North East of Millersburg along Route 25, Upper Paxton Twp., Dauphin Co. 25 miles North of Hbg.



REAL ESTATE

Approx. 110 Acre Farm - 101 Tillable
At 12:00 Noon

• 2 1/2 STORY FRAME 11 ROOM HOUSE - 1 1/2 Bath, New Roof, Well, Septic System, Asbestos Siding & More.

• 3 Bedroom 24' x 50' FRAME RANCH HOUSE - (Aluminum Siding) Living & Dining Room, Modern Kitchen, Attached Office & Laundry, Coal Hot Water Baseboard Heating System.

• BARN - New 120'x40' Hip Roof Dairy Barn (with flow thru ventilation system), Galvanized Siding & Roof, Steel Beams, Fluorescent Lighting, Exhaust Fans, Automatic Cornell Manure Cleaner, 43 Cemented Rubber Matted Cow Stall, Box Stalls.

• SILO - New 16' x 70' Cement Stave Silo.

• CATTLE/IMPLEMENT BUILDING - New Galvanized Steel 40'x64' Cattle/Implement Building with Ventilation Roof & New Gates.

• OTHER BUILDINGS - 2 Story Cinder Block Shed, 2 Story Butcher House, Pig Stable, Corn Crib & Other Bldgs.

• FARM LAND - 101 Acres Tillable, 3/5 Borders Twp. Hard Road, 2 Small Streams, Productive Farm.

TERMS: 10% Down. Balance 60 Days, Additional Terms, Day of Sale.

FOR INSPECTION OF REAL ESTATE CALL: 717-692-4532, 692-3991, or 896-8530.

FARM MACHINERY MILKING EQUIPMENT

TRACTORS - Ford 5000 Tractor (Power Steering), Ford 4200 Tractor with select-o-speed, Farmall Super H Tractor with Kelly Loader.

MACHINERY - J.D. 3300 Combine (2, 10 ft. Heads, Spreader, Pickup Reel), N.H. No. 265 Tank Spreader with Hydraulic Lids (exc. cond.), I.H. No. 400 Air Planter with Harrow Attach., Patz 98-B Silo Unloader (exc. cond.), N.H. Super 717-Forage Harvester with Corn Head & Wind Row Pick-Up, Ford No. 301 3 Pt. 2 Row Planter, N.H. 56-R Hay Rake, N.H. No. 268 Baler with 54-A Thrower, Ford Model No. 901

Rotary Cutter 3 Pt., N.H. No. 461 Haybine, N.H. No. 450 Mower 3 Pt., N.H. No. 36 Crop Chopper, N.H. 30' Elevator, J.D. No. 121, 3 Bottom 14" Plow 3 Pt., N.I. No. 323 Single Row Corn Picker, J.D. No. 1250 3 Bottom 16" Plow, 3 Pt.; J.D. No. 110 12' Disc Transport, J.D. 12' 3 Section Drag Harrow, Ont. 15 Hole 8" Drill on Rubber, Spring Tooth Harrow 3 Pt., 9' Single Roll Cultipacker, Ford No. 101 2 Bottom Plow 3 Pt., Scraper 3 Pt.

WAGONS - Grove Flatbed Wagon, N.H. Wagon, I.H. No. 61 Forage Wagon, McCurdy Wagon with Hay Rack (exc. cond.), I.H. No. 3 Forage Wagon with N.H. Running Gear, Dupont Wagon with Case Running Gear.

TRUCKS - FORD F-600 Class 8 Dump Truck, 1976 Chevy 20 Series 3/4 Ton Pick-Up Truck Class 2 (44,000 Miles), 1970 Chevy Stake Body Dump Truck, Class 4 (24,000 Miles)

MISC. EQUIP. - 30,000 K.W. Alternator with Trailer, Hydraulic Cylinders, Agway Chemistore Applicator with 1/2 H.P. Motor, 500 Gal. Fuel Tank, Schuld 2 Ton Feed Bin (exc. cond.), 38" Dual Wheels for Tractors, Overhead Gas Tanks, Air Compressor.

MILKING EQUIP. - 350 Gal. Esco Milk Tank Cooler, 3 Units Surge Milkers, 5 H.P. Vacuum Pump, Top-Line Milk Dumping Station, Milk Cans, Buckets, Strainers.

SMALLER FARM EQUIPMENT, TOOLS, PARTS, SEVERAL FULL WAGONS

Agway Water Fountain with Heater; Wheelbarrow; Feed Cart; Clippe Seed Cleaner; Metal Farm Gates; Electric Fences; Fence Wire & Posts; Blacksmith Forage with Blower, Tractor Tires & Chains; Log Chains, Heat Houser For Ford 4200; Gray Seeder for Ford Tractor; Forks; Shovel; Scrap Iron; Misc. Lumber; Grain Bags; 1 Horse Cutter Sleigh; 2 Seat Carriage; Single & Double Trees; Double Driving Harness & Hanes Electric Drills; Skil Saw; Screw Jacks; Cant Hook; Broad Ax, Drill Press; Anvil; Bench Vise; Grinder; Pipe Threader; Pipe Wrenches; Hydraulic Jack; Clevis; Brace & Bit; Drill Press; Motor Oil; Chain Binders; Tool Boxes; Jumper Cables; Carpenter, Mechanical & Hand Tools; Equip. Parts; Bolts & Many Other Wagon Lots & Farm Supplies.

BUTCHERING EQUIPMENT

Bucket-A-Day Stove with Water Jacket; (2) Iron Kettles; Meat Bench; Sausage Stuffer; Meat Grinder; Wellsaw Electric Meat Saw; Butcher Fork, Ladles & Stirrer; Meat Stands; Hog Gallows, Hooks & Other Butcher Equipment.

AUCTIONEER NOTE: This modern dairy farm has been part of the family for over 65 years. Reason for selling - illness in family of partnership. This is one farm sale you don't want to miss.

Owners:
MORRIS J. & ELVIN E. LEBO

Attorney: Greg Kerwin
AUCTIONEERS: Mark & Dave Deibler
RD3, Box T-76 Halifax, PA
896-8530 - 692-4473
Lunch stand reserved