

Public Sales Register

FRI. OCT. 30 - 10 A.M.
Public Sale of Feeder Calf and Yearling. Located at Farmers Livestock Exchange, Inc., Winchester, VA. Northern Virginia Livestock, Inc. P. T. McIntire, Sales Manager.

SAT. OCT. 31 - 9:00 A.M.
By Zook's Farm Store. Inventory reduction auction. From Honeybrook take Rt. 322 W to Reservoir Rd. Turn right. ¼ mile to store. John E. and Paul E. Martin Auctioneers.

SAT. OCT. 31 - 10 A.M.
Public Sale of Real Estate Located along Long Lane, RD 6, Lancaster, just south of New Danville, Pequea Twp., Lancaster Co., PA between Rt 324 and New Danville Pike. Sale by Mrs Raymond E. Miller Howard Shaub, Auctioneer

SAT. OCT. 31 - 1 P.M.
Pennsylvania Simmental Association Fall Sale, Waynesburg Fairgrounds, Waynesburg, Pa., S. Western Pa. Exit 3-1-79 Sale Managed By Stough Livestock Services, Route 4, Charlotte, Michigan

SAT. OCT. 31 - 2 P.M.
Public Sale of Farmette Located approx 3 miles east of Honey Brook, PA, take Chestnut Tree Rd. north off Rt 322, go approx 3 miles to Isabella Rd., turn right to farm. Terms by Frances and Janet Golembiski Horning Farm Agency, Inc., Auctioneers.

SAT. OCT. 31 - 11 A.M.
Public Sale of Farmette Located 4 miles west of Honey Brook from Rt. 322, take Churchtown Rd to Mast Rd., turn west 1 mile to Property. Terms by Thomas E. Walter, Elton and Alvin Horning, Auctioneers.

SAT. OCT. 31 - Consignment Auction of Farm and Industrial Tractors and Machinery. Held at Goodrich Auction Service, Newark Valley, NY 607-642-8688

SAT. OCT. 31 - 2 P.M.
Public Sale of 2 Valuable Farm Properties Located along Ranck Rd., 3 mi. southeast of New Holland, 1 mi. east of Ranck Church. Terms by Donald L. and Mary C. Parmer, Lester O. Weaver and Barry D. Wanger, Auctioneers

SAT. OCT. 31 - 9 A.M.
Public Sale of Wood Working Shop, and Tools. Located in Lancaster Co., PA, ½ mi. south of Ronks Twp. Terms by Jacob Z. Stoltzius Steve Petersheim, Auctioneer.

SAT. OCT. 31 - 9:30 A.M.
Public Sale of Antiques and Collectibles. Located 2 mi. S.W. of Ashland at the former Jim and Sis Moyer Hotel, Main St., Lavelle, PA, east of Rt. 901 about 5 mi. off I-81, Exit 35. Jim Moyer, Owner. George and Mike Deibert, Auctioneers.

SAT. OCT. 31 - 10:30 A.M.
Public Sale of Antiques and Furnishings. Located 2 mi. west of Clayton, Del. (Route 6), 1st place on left on Rd. 138 (10 mi. east from 301 and Md 291) Millington, Md to sale, from Rt. 13 Smyrna, Del., take Rt. 300 to Rt. 6 (3 mi. to sale.) Grace S. Breiser, Owner. Harry Rudnick and Sons, Inc., Auctioneers

SAT. OCT. 31 - 2 P.M.
Public Sale of Real Estate. Located along Rt. 897, 2 mi. SE of Blue Ball. Terms by Earl M. and Marian Hoover. Paul W. Horst and Lamar Sensenig, Auctioneers.

NOVEMBER

MON. NOV. 2 - 2 P.M.
Danville Livestock Market, cattle and hog auction. Located Old Route 11, Danville, PA. Melvin M. Lehman, owner.

Located at Tri-State Livestock Market, Abingdon, VA.

TUES. NOV. 3 - 7 P.M.
Special Feeder Sale for your Cattle and Pigs. Located at Westminster Livestock Auction

MON. NOV. 2 - 7:30 P.M.
Public Sale of cattle.

CONSIGNMENT AUCTION

SAT., OCT. 24

AT 1 P.M.

**SHOTGUNS & RIFLES
BUTCHERING EQUIPMENT**

Interested Call
717-992-4611

**Dick & Dan Seidorf
Auctioneers
Sciota, Pa.**

SPECIAL FEEDER AND REPLACEMENT CATTLE SALE

**MONDAY, OCTOBER 26
7:30 P.M.**

150 head of Hereford, Angus and Charolais yearling steers and heifers. 400 head of Hereford, Angus, and Charolais steers and heifer calves. 100 head Holstein and crossbred steers and heifers.

If you are planning on buying feeder cattle this will be a good sale to attend.

For more information contact Thomas Engle 703-459-4402 or Harry Gochenour 703-459-4778.

**WOODSTOCK LIVESTOCK MARKET
U.S. Rt. 11
Woodstock, VA**

Shenandoah Valley Livestock Sales SPECIAL HOLSTEIN STEER SALE



WEDNESDAY, OCTOBER 28

TIME: 7:30 P.M.

**HOLSTEIN STEER SALE - STATE GRADED
Dairy & Dairy Cross Steers
Weight 300-1200**

**Shenandoah Valley Livestock Sales, Inc.
1044 Edom Road
Harrisonburg, Virginia 22801
Phone (703) 434-4482**

PUBLIC AUCTION

"STONE CREEK ACRES"

A Pocono Mountain Community consisting of 67 wooded home sites to be sold individually on the site at public auction on

SATURDAY, OCTOBER 24, 1981

At 11 A.M.

"STONE CREEK ACRES" is 9 miles north of JIM THORPE on Rt. 903 in Penn Forest Twp., Carbon County, PA.

An excellent opportunity to buy a residential home site in the Pocono Mountains. Ideal for a permanent or vacation home with hunting, fishing, skiing, snowmobiling, swimming, & boating just minutes away. Lot sizes vary from 1 to 2 acre parcels to multiple lot parcels of 13 and 14 acres.

"STONE CREEK ACRES" has been approved by HUD and Twp. & Co. authorities. Lots may be viewed anytime. Supervised inspection on Sat., Oct. 10th & 17th from 10 to 3 P.M.

CALL OR WRITE FOR DETAILED BROCHURE.

Sanford A. Alderfer, Inc.

REAL ESTATE BROKERS and AUCTIONEERS

665 Harleysville Pike. (Rt. 113)

Box 1, Harleysville, PA 19438

215-723-1171 or 256-8892

PUBLIC AUCTION

of the
Personal Property
of Marguerite W. Whitson

SATURDAY, OCTOBER 24

10 A.M.

Sale located 1½ miles S. on 896 (Hartman Bridge Rd.) off of Route 30 E. at Strasburg Auction, Strasburg, Pa.

Fine Antiques, Lots of English, French and German China, Victorian Furniture, Early Applied Quilts, 1829 Sampler, Signed Coverlets; 1850, 1842. Old documents, signatures, cane seated chairs, Benington molds and many items listed. A Must For Antique Buyers And Collectors.

TERMS: Cash, traveler's checks or personal checks if known by us. No out of state checks accepted.

Preview: 1 hr. before Auction.

Auctioneer: **H. Edward Johnson**
RD#2, Lancaster
Phone (717) 285-4358
687-7113

Sale by:
HAMILTON BANK
Administrators

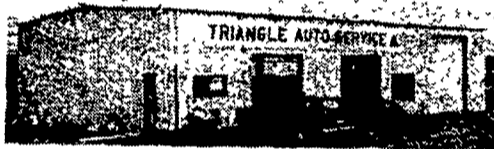
PUBLIC SALE

**OF REAL ESTATE, VEHICLES,
TOOLS, AUTO PARTS, GARAGE
EQUIPMENT, OFFICE EQUIPMENT**
SATURDAY, NOVEMBER 14

SALE TIME 10:00 A.M.

REAL ESTATE 1:00 P.M.

Located at Schaum's Corner, Intersection of Rts. 272 and 772, just off Brownstown exit at Rt. 222, along road from Schaum's Corner to Rothsville, Lancaster County, Pa.



A certain tract of land, 1 acre, more or less, upon which is erected a

40x75 KIRBY STEEL INSULATED BUILDING

6 years old, 2 floor hoists, hot air oil heat, well, septic system.

If you are looking for a garage to go in business don't miss this sale. Inspection of property, Oct. 24 to 10:00 a.m. to 3 p.m. Terms 10% down and balance in 60 days.

**Autos & Truck Equipment & Tools
VEHICLES TO BE SOLD AT 1:30 P.M.**

1 - 1958 Ford F600 with Ashtun J43 Wrecker

1 - 1963 Int. 4WD Pickup Truck with Plow

1 - 1975 Jeep Cherokee Quadratrak

Equipment

1 US Curtis 5 H.P. Phase Compressor; 1 Lincoln Stationary Air Grease Gun w/Hose Reel; 1 Lincoln Bulk Oil Pump w/Hose Reel; 1 - 275 Gal. Bulk Oil Tank; 1 Lincoln Portable Air Grease Gun; 2 Gear Oil Pumps & Dollies; 1 Allomete Crossite Alignment Gauges; 1 Small Dayton Drill Press; 2 Bench Grinders; 3 Bench Vises; 1 - 20 Ton Red Arrow Press; 1 Bishman-Model 145 End Lift; 1 Coates 10-10 Tire Changer; 1 Bada Bubble Balancer; 1 Red Arrow 5000 Lb. Engine Hoist; 1 Red Arrow Engine Stand; 1 ESB Battery Charger; 2 Battery Testers; 1 Marquette 40-175 Engine Analyzer 2 Yrs. Old; 1 Airco 225 AMP Welder; 1 Miller 255 AMP Welder; 1 G.E. 400 AMP Gen. Welder; 1 Welders Vise & Anvil; 2 - 1 ton Floor Jacks; 1 - 20 Ton Floor Jack; 1 Truck Wheel Dolly; 1 Jacobson 8 H.P. Tractor w/Mower & Snow Blower; 1 Set Hoppy Headlight Aimers; 1 K.D. McPhearson Service Tool; 1 - 300 Gal. Skid Tank.

Tools

2 - ½" Drive Air Wrenches; 2 - 3/8" Drive Air Ratchets; 1 - ¾" Drive Air Wrench; 2 ¾" Drive Socket Sets; Assorted Wheel Wrenches; 1 - 300 Lb. Torque Wrench; Foreign & American Car Manuals; Many (Snap On) Hand Tools

New & Used Foreign & Sports Car Parts

Office Equipment

and many more articles not mentioned.

TERMS BY:

TRIANGLE AUTO SERVICE

Irvin L. Zimmerman, owner
FRANK AND PAUL SNYDER, AUCTS.
717-859-2688 — 717-733-7052

FASNACHTS, CLERKS

EABY & EABY, ATTORNEYS

Not Responsible For Accidents

Terms of Sale, Cash or Company and Personal Checks with current bank letter of guaranteed payment.

PUBLIC AUCTION

VALUABLE CARROLL COUNTY REAL ESTATE

36 ACRE FARM

FARM MACHINERY - GRAIN STORAGE BINS

CHICKEN EQUIP. - 40 TON FEED PROCESSING

CENTER - TRUCKS - CARS

SATURDAY, OCTOBER 24, 1981

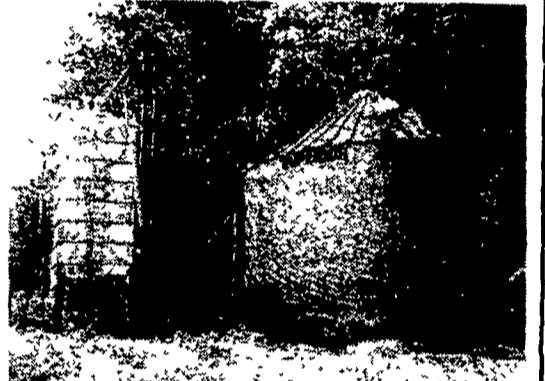
10:00 A.M.

Location: on the farm, Carroll County, Md. midway between Baltimore & Frederick. Travel Rt. 70 West of Baltimore to exit 71 (Woodbine-Lisbon) turn right or north on Route 94, also known as Woodbine Rd., travel approx. 6 miles to Windfield Bible Chapel, turn left onto Bethel Road, ½ mile to property on left.

REAL ESTATE: 36 acres (more or less) to be offered separate, as 11 acre tract and 25 acre tract, or together.

25 ACRE TRACT: Includes 16 acres tillable ground with balance mature woodland and about 1700 3 yr. old White Pine trees. Buildings consist of new Morton steel pole building 42'x65' completely enclosed. 48'x250' masonry block chicken house and detached egg processing room. 2 streams on property approx. 475' road frontage on Bethel Road.

11 ACRE TRACT: Presently in young apple orchard and some woodland. Includes stream. Approx. 725' road frontage on Bethel Road. Real Estate to be offered at 1:00 p.m.



AUCTIONEERS NOTE: Property to be offered separate and together. Owner financing available to prequalified buyers at 13½%. Beautiful rural farm country, only 1 hour from Washington, DC or ½ hour from Baltimore. For complete details, terms, conditions, and property plot plan, call or write Kline & Kreider Auctioneers, R.D. 1, Stevens, Pennsylvania 17578. (717) 733-1006 or 354-4071. Don't miss this opportunity to purchase rural country real estate at your price.

OPEN for Real Estate Inspection: Saturday, October 3, 10 & 17 from 1:00-4:00 p.m.

FARM MACHINERY

Self contained 40 ton capacity auto feed processing center which includes 4-10 ton storage departments with auto mix mill plus 44' bucket elevator rated at 800 bus. per hour (like new, rarely used).

ALSO — Superior 20,000 Bushel grain bin with 6" auger unloader. (Moving and reassembly of feed processing center & 20,000 bin available).

FARM MACHINERY

Case 970 Diesel tractor only 650 hrs. (like new), International 240 utility, new Idea 60' grain elevator auger 8", Onan 15 kw generator (seldom used), John Bean 300 gal. fruit sprayer, 3-9 ton feed storage bins, 5' rotary mower w/pto, JD harrow, AC5 bott. plow, JD 2 row cornplanter, diaphragm sludge pump, Tornado grain bin fan, JD 5' disc, battery charger, 180 amp welder, garden trac, rotoroller, 200 gal. tank sprayer, champion air compressor w/¾ hp motor, wheel barrow & truck & cars, 71 ¾ ton Ford Van, fair cond., 72' ¾ ton chev. van fair cond., 75 Datsun B210, 73 Ford Torino, 61 GMC van and Honda 250 bike. Chicken & egg process equip. - Kuhl elec. egg washer, egg-o-matic grader (15 cases per hour), 2 vacuum egg lifts, 2 stanomatic battery feed carts, lots of wire cages, plastic water pipe, feeders and lot of styro foam egg cartons. Air conditioners and 2 Kuhl' air coolers.

NOTE: Very few small items to be sold. If interested in machinery be at auction at 10 A.M.

No out of state checks accepted unless prior approval from auctioneers.

(Approximately 500 Bushel shelled corn)
Lunch Available.

Terms by:

WILLIAM E. & SANDRA M. ELZINGA

(301) 531-5335

Auction Conducted by:

Randal V. Kline

Lloyd H. Kreider

Roy E. Good, Jr. Auctioneers



Phone (717) 733-1006