

# Huntingdon Co. DHIA

(Continued from Page D23)

865	3	6-2	229	16,341	690
1193	3	3-2	305	19,708	688
1178	3	3-2	305	19,345	683
1343	3	2-2	305	15,774	674
1358	3	2-3	305	17,814	656
1164	3	3-4	305	13,431	646
1162	3	3-2	305	17,863	637
1376	3	1-11	293	14,044	636
928	3	5-6	305	16,824	633
1374	3	2-0	272	14,093	606
1359	3	1-11	305	16,622	603
Durbin Farms					
Dolly	3	3-4	305	21,373	888
Ruth	3	3-10	305	17,548	766
Abort90	3	8-3	305	20,594	718
Tammy	3	3-2	305	17,071	661
Tracy	3	4-6	305	17,080	622
Gillbrook Farm (3 times per day)					
Pam 1407	3	2-1	305	22,418	850
HS 156	3	10-2	305	21,964	772
HS 129	3	6-6	305	20,923	751
BC 1393	3	2-11	204	18,790	711
Gibbonney Farms					
Mabel	3	5-3	305	26,540	845
Jan	3	5-2	305	21,917	792
Paula	3	5-3	304	16,271	674
Lisa	3	4-3	276	14,370	674
Julie	3	6-2	291	18,156	651
Glenn Peachey					
EV	3	9-11	305	20,822	829
Minnie	3	5-3	284	17,597	750
Holly	3	5-8	305	18,045	702
Tracy	3	8-1	305	17,358	658
Linda	3	3-5	305	17,378	635
Myrtle	3	2-4	305	17,021	625
Breezy Hollow Farm					
Sandy	3	6-1	305	19,596	812
Polly	3	1-11	305	17,232	610
Lakevue Farm					
Missie	3	6-0	305	23,101	782
Louisa	3	6-0	305	19,167	696
Rockey	3	3-8	305	16,970	661
Max Isenberg					
Madge	3	6-1	305	24,140	778
Bugs	3	4-10	244	19,341	696
Dustin	3	4-6	305	17,091	571
Tifney	3	2-1	305	19,970	543
Sidney R. Ormsby					
4 Ann	3	5-1	305	20,334	777
14 Billy	3	4-3	305	21,765	744
27 Taffy	3	6-10	288	18,709	743
Sangrey Bros.					
66 Dyan	3	2-6	305	21,346	771

Judy	3	3-1	305	17,423	715
43 Heif	3	2-0	305	18,191	697
53 Beth	3	2-8	305	20,359	673
51 Kim	3	5-4	305	17,426	643
Joseph Hicks					
125	3	5-3	305	24,053	750
Globe Run Farms					
Darla	3	7-2	305	20,090	741
Corine	3	5-0	305	18,870	730
Dixie	3	4-3	305	19,067	613
Howard & Nancy Wiggins					
48 Marti	3	4-1	305	22,804	739
81 Renta	3	8-3	291	18,180	702
43 Lass	3	3-1	291	18,826	657
44 Coal	3	3-0	305	16,468	600
Behrer Farms					
5	3	5-7	305	19,550	734
7	3	7-8	305	20,526	697
69	3	6-10	305	17,369	677
38	3	6-1	305	19,577	672
87	3	8-1	305	19,445	653
90	3	4-10	303	18,819	653
71	3	5-2	281	16,858	633
86	3	8-0	305	15,126	615
91	3	4-1	305	17,453	576
47	3	7-0	305	20,484	570
Ezra S. Zook					
Jewlett	3	4-8	305	22,056	731
Mable	3	4-6	305	17,331	657
Jane	3	2-5	305	14,370	616
Ann	3	6-0	305	17,028	547
Locust Lane Farm					
Y81	3	3-2	305	20,534	731
O 8	3	2-11	305	13,466	656
Eberle Brothers					
Cecil	3	10-8	305	20,512	726
Beulah	3	4-1	305	18,186	674
E. Vance Thompson					
47	3	8-11	305	15,797	721
3	3	2-5	305	14,313	629
Harry & John Keith					
Pepsie	3	2-8	305	16,885	711
Ann	3	4-6	305	13,771	670
Stellia	3	8-11	305	17,528	611
Raymond M. McGargle					
Kathy	3	7-1	305	18,481	708
Tiny	3	3-6	305	17,643	615
Jim & Kim Grove					
30	3	6-4	305	18,688	693
36	3	4-1	305	15,996	624
Suzie	3	4-4	305	15,628	605
J. Frederick Kyper					
Petunia	3	4-2	305	18,779	692
N & N Farm					
O 7	3	7-7	241	19,134	688
Tom & Gloria Coffman					
Jean	3	4-10	292	19,771	686
John C. Goshorn					
Chris	3	7-8	302	17,654	681
Candy	3	2-4	305	17,065	580

Kenneth & Betty Weber					
45	3	0-0	305	16,280	680
24	3	0-0	305	18,657	600
Joseph C. Knarr					
Linda	3	5-10	305	18,770	657
Joseph M. McMath					
Stella	3	3-3	305	19,114	637
Raymond Tussey					
Poonie	3	4-7	305	19,509	622
Gary Thompson					
Jackie	3	4-9	285	14,044	620
Chester & Cagle Smith					
218	3	7-2	305	13,863	618
257	3	6-9	305	15,451	611
77	3	4-6	305	17,367	562
Hawn Brothers					
Raven	3	4-9	295	17,672	613
Baney Brothers					
Ellen	3	3-2	305	15,027	606
Maryann	3	6-5	279	18,301	593
Edwin Steach					
White	3	2-0	305	17,584	557

## Berks announces moth spray areas

LEESPORT — The tentative spray block areas of the 1982 Gypsy Moth Program have been completed and categorized as to priority.

They now will be evaluated by the Forest Pest Management section of D.E.R., Bureau of Forestry, PA Pottstown. This team will visit each site of which there are 140 in Berks County, and determine the final spray block areas. These areas will be decided upon priorities and funds available.

Due to federal, state, and County budgets it is highly possible many areas will not be sprayed when one considers that in 1981 only 179,500 acres were sprayed in 26 Pennsylvania counties. This year 10,000 acres are planned in Berks alone. D.E.R. estimates well over 1,000,000 acres should be sprayed in 1982.

The spray blocks range from a low of six acres to a high of 800 acres in one block.

### Badger's Earcorn Mill handles wet, shucky, even frozen earcorn.

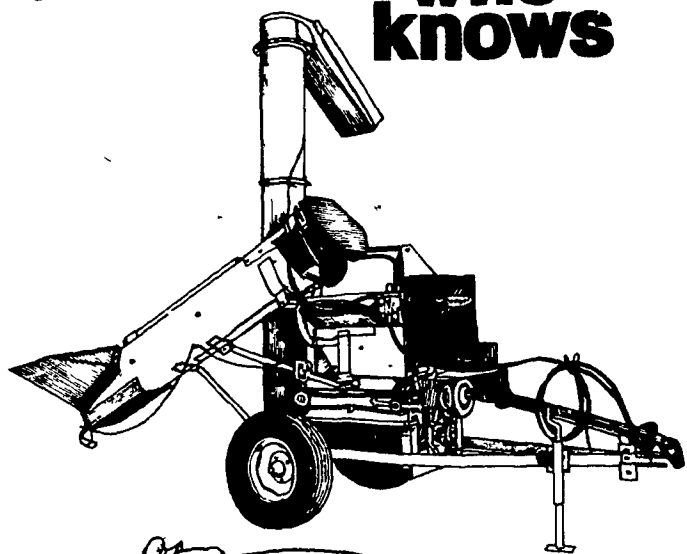
The unique cob crusher unit shells corn and shreds the cob ahead of the rollers which crack the kernels and reduce the cob further. No troublesome screens to change or slow down the capacity. It comes with 8-foot hydraulic intake auger and an 11-inch tilting discharge auger with 10-foot reach. The intake auger swings to the rear for transport and may be operated at any angle from rear to side.

OPTIONS Blower drive with overrunning clutch to power your forage blower and mill from the same tractor. Also blower discharge for direct bin or silo filling.

CAPACITY 420 bushels per hour (Depending on moisture content)



Talk to the man who knows



PIKEVILLE EQUIPMENT INC.  
RD 2  
Oley, PA 19547  
Ph. (215) 987-6277

GRUMELLI'S FARM SERVICE  
Mechanics Grove  
Quarryville, PA 17566  
Ph. (717) 786-7318

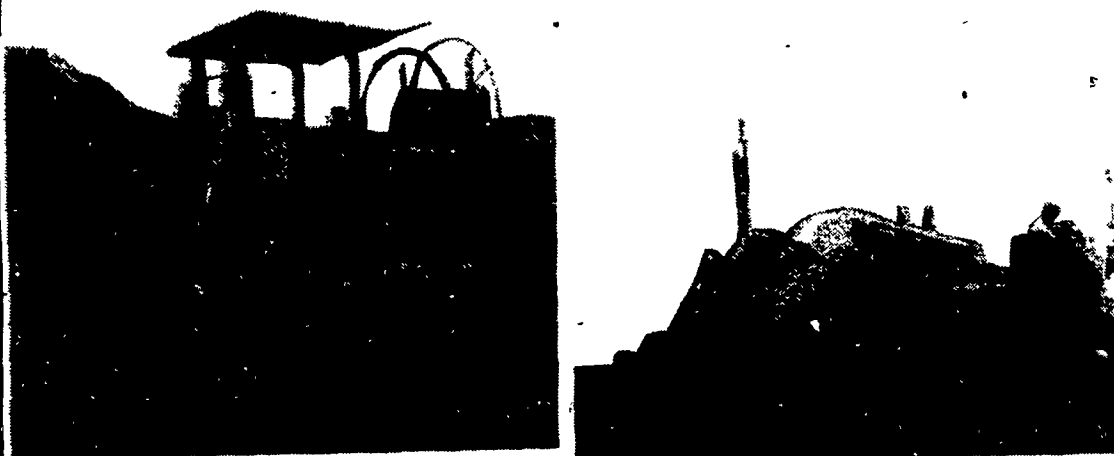
ROY O. CHRISTMAN  
RD 1  
Hamburg, PA 19526  
Ph. (215) 562-7218

CECIL DAIRY SERVICE  
RD 1 Rt. 274  
1/2 Mi. South Rising  
Sun, MD 21911  
Ph. (301) 658-6923

LLOYD E. KREIDER  
RD 1  
Cochranville, PA  
19330  
Ph. (215) 932-4700

SHOW-EASE STALL CO.  
523 Willow Rd.  
Lancaster, PA 17601  
Ph. (717) 299-2536

## DRAINAGE PROBLEMS?



COCALICO EQUIPMENT HAS THE TWO MACHINES TO HANDLE YOUR DRAINAGE PROBLEMS.

★ Both machines Equipped with Laser Beam Grade Control

Investment	Typical Annual Return
Land Drainage	21-46%
Farm Buildings	3-23%
Farm Land	11%
Stocks	7.4%
Bonds	6.1%

**COMPARE**  
Even with the conservative figures shown here, it's obvious that land drainage should top farmers' lists of investment priorities.

★ We Stock Heavy Grade Tubing which Exceeds SCS Specifications. In sizes 4", 6", 8", 10" and 12".

NOW AVAILABLE  
15" & 18" Tubing

★ Also Pipe And Fittings For Tile Outlet Terraces.



COCALICO EQUIP. CO.  
DRAINAGE & EXCAVATING  
RD #3, DENVER, PA 17517 PH: 215-267-3808

