

**SITUATIONS WANTED**

Wanted position as working manager, have dispersed my registered and grade Holstein herd, 17,000 lb. RHA excellent in herd health. Call mortality "O" since October 1978. Prefer stall set-up w/large responsibilities. Available immediately, married w/family. For more particulars Call 201-782-1679

Responsible married man with some experience seeks long term employment to learn all aspects of beef, dairy or pig operations. 215-485-6103

Conscientious, considerate individual will pay cash for hunting privileges. Pheasant, Deer or both. Prefer Lancaster or Bucks County area. Penna only. Call collect 215-355-7060

Farm family would like to work on hog or beef farm on a salary basis, Lancaster, Ephrata or New Holland area. Send reply to Box 366 J-197, c/o Lancaster Farming, Lititz, PA 17543

Ambitious, young, experienced dairyman seeking position with management on dairy farm. References available. Non-smoker and non-drinker.

Write  
Lancaster Farming  
Box 366 R-79  
Lititz, PA 19543

**TRUCKS & TRAILERS**

1971 Diamond Reo, cab over, motor and transmission rebuilt \$8,000. 814-448-2260

1973 Brockway 318, 15 speed wetline, full screw, Mack B67 w/18' grain body and 18 ton hoist, 24' steel dump trailer w/22' rubber. 717-865-6710

Wanted - 1 ton truck with 10-12' aluminum cattle body Call evenings 201-369-4120

For Sale - gooseneck flatbed trailer, 21,000 lb., gross, triple axle, 32' bed, ideal for hauling equipment, hay or straw, 1 yr. old, good shape. \$4500 301-848-1424

For Sale - 76 Chev. Silverado crew cab truck, dual rear wheels, 5th wheel and bumper hitches, fresh engine, new tires, 4 speed, AM-FM, air, \$5500 301-848-1424.

Energy Hyd. truck hoist Sales & Service. Anderson's Repair Shop, Rd 1, Felton, PA 717-244-2039.

1973 Pete 318 full screw, 8,000 miles on major, will sell or trade for car of equal value. 717-865-6710.

**TRUCKS & TRAILERS**

- 1974 Ford F 700 - 16 Flat Dump PS \$6500.00
- 1971 L8000 Ford 15' Tandem Dump \$6500.00
- 28' Alum. Dump \$6500.00
- 20' Steel Dump \$2500.00
- 35' Flat Trailer \$1000.00

**CURRY SUPPLY**

Others  
Curryville, Pa.  
814-793-2829



**LANCASTER**  
1710 Rohrerstown Rd.  
717-569-2648  
**YORK**  
1116 Roosevelt Av.  
717-848-6400

**USED TRUCKS**

**EXCEPTIONALLY CLEAN AND WELL MAINTAINED**

**1977 FORD ECONOLINE** E250

300 cyl. engine, auto trans. radio, new paint.

**1976 & 1977 CHEVROLET**

**12' STEP VANS** P30

Matched Fleet - Will sell one or more, etc., 350 V8 engine, 4 speed transmission, dual rear wheels, aluminum bodies, with or without new paint.

**1975 CHEVROLET**

**20' & 22' VANS** TE67

with or without lift gates, 366 V8 engine, 5 speed or automatic transmission, power steering, radio, new paint.

**USED TRACTORS**

**1974 CHEVROLET** HI9143

Single axle diesel, conventional cab, 238 Detroit engine, 10 speed transmission, P.S., new paint, recent overhaul.

**1975 CHEVROLET** Titan 90

Tandem axle diesel sleeper, 318 Detroit engine, 10 speed transmission, PS, AC, with or without new paint.

**1975 CHEVROLET** Titan 90

Single axle diesel sleeper, 238 Detroit engine, 10 speed trans., PS, A/C, just overhauled, with or without new paint.

**1976 PETERBILT** 352S86

Tandem axle diesel sleeper tractor, 350 Cummins engine, 13 speed transmission, power steering, A/C, recent overhaul.

**1977 GMC** JC 9640

Tandem axle diesel, conventional cab, NTC 290 Cummins engine, 10 sp. trans., 38,000 rear axle, PS, AC, low mileage

**USED BODIES**

**14' REFRIGERATED VAN BODY**

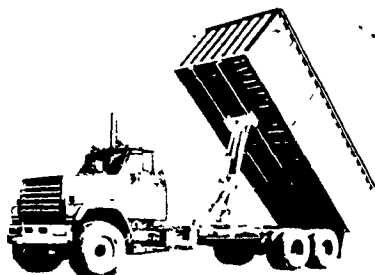
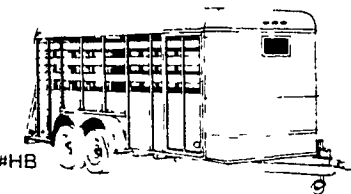
1975 Duralite aluminum smooth skin, extruded aluminum floor, new paint, XMT20D thermoking unit with electricity standby..

Complete maintenance records available for inspection. Other makes, Models & types to choose from.



**HOSTETLER**

**Truck Bodies & Trailers**



Rt. 322 Milroy, PA 17063  
717-667-3921

**OSTERLUND TRUCK SERVICES, INC.**

450 ALLEN ROAD, CARLISLE, PA 17013  
PHONE: 243-2100 or 238-4306



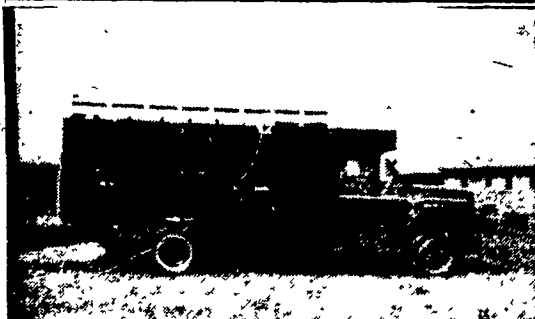
**8 UNITS AVAILABLE FOR IMMEDIATE DELIVERY**  
1977 through 1979  
IHC, S-Model, Loadstar

- 217" Wheelbase
  - 149" CA
  - L Reinforced frame
  - 404 V8 Gasoline engine
  - 7,500 pound Front axle
  - 16,160 pound Rear axle
  - Five (5) speed trans.
  - Hydraulic front and rear brakes
  - 9.00x20 Front and rear tires
  - 23,600 pound Gross vehicle weight rating
  - Standard steering
  - AM Radio
  - 17,000 pound Rear suspension
  - Bench seat
  - 5.57 Rear axle ratio
  - 14" Clutch
  - 59 Gallon fuel tank
  - Standard alternator
  - Standard battery
  - Excellent condition
  - No rust
- PRICED FROM \$6,500 TO \$7,500

- 1977 - 721 Bob Cat Diesel Skid Loader \$5975.00
- 1975 Owatonna 1000 Bob Cat \$3500.00
- 1975 - Case 1740 Diesel Bob Cat \$4500.00

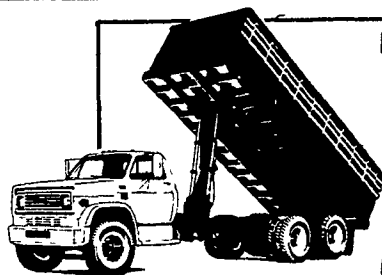
**CURRY SUPPLY**

Curryville, Pa.  
814-793-2829



**1978 GMC CATTLE TRUCK**

15 ft. bed,  
V8, 350 Engine, 6000 Series  
717-529-2614



**Tough, Dependable Farm Bodies & Hoists**



FARMERSVILLE EQUIPMENT INC. Ph. 717-354-4271



**Sales and Service**

1248 E. Newport Rd.  
Lititz, PA  
Phone: 717-626-4762

**FALL CLEARANCE SALE**

Contact Jack Conrad or Dick Shultz

**IDEAL FARM TRUCKS**

- Stock #101 1969 GMC w/6 engine. Model 5500, GVW 23,000, Steel Grain Body Price: \$1,900<sup>00</sup>
- Stock #102 1975 Chev. 65 series w/16' Van Body & Bulk Feed unload equip. Must be seen to appreciate Price: \$7,500<sup>00</sup>
- Stock #103 1970 Clark Bulk Feed Tank with pick-up unit. Real nice body. Price: \$4,000<sup>00</sup>
- Stock #104 16' Sprout Feed Body Tank type. Air unload system. Mounted on Mack truck - 1959 COMPLETE: \$4,500<sup>00</sup>  
Note: this unit can be sold w/truck or separate.
- Stock #105 Daffin Mobile Mill Complete with truck. Mollasses system & air unload package. Mounted on 1970 Int. Truck. New PA inspection \$6,500<sup>00</sup>

**IDEAL FOR GENERATOR SETS**

- Stock #106 2-471 Detroit Diesel engines, Power units. Running Condition Price: \$2,500<sup>00</sup> each
- Stock #107 1-471 Detroit engine Power unit. Completely checked & tuned. Price: \$4,900<sup>00</sup>

**DON'T MISS THIS SALE**

Sale Starts October 19, 1981

**EASTERN MOBILE MILLS**