

Polled Herefords gear-up for North American

BY DONNA TOMMELLE
TIMONIUM, Md. — On the last leg of the show circuit before the North American International Livestock Expo at Louisville, Ky., Polled Hereford breeders east of the Mississippi exhibited their top animals, Thursday, at the Eastern National Livestock Show at the Timonium Fairgrounds.

"This has been a real high quality show—especially the champions, which are outstanding," commented show judge Jim Gillooly.

Gillooly, an Angus and Hereford breeder from Washington, Indiana, went with ASB BO TEN for grand champion female. The top honor was just another notch in the win column for owners Greg Billing and Overlook Farm, Little Falls, N.Y.

Throughout this show season the grand champ, a 21-month-old heifer, picked up three reserve champ honors. Last week she was tapped as reserve champ at the Keystone International at Harrisburg, a repeat performance of the Junior National Show in Kansas. The Will Via Justa V daughter was also the reserve calf champ at the National Polled Hereford Show in Denver.

The top heifer is currently bred to S. Gilead 115, the 1977 national reserve champion.

A 2½-year-old Enforcer 107H son was named Grand Champion. FLF Masterpiece, owned by Falklands Farms and Busby Farm, Schellsburg, carried an impressive string of victories into the winner's circle.

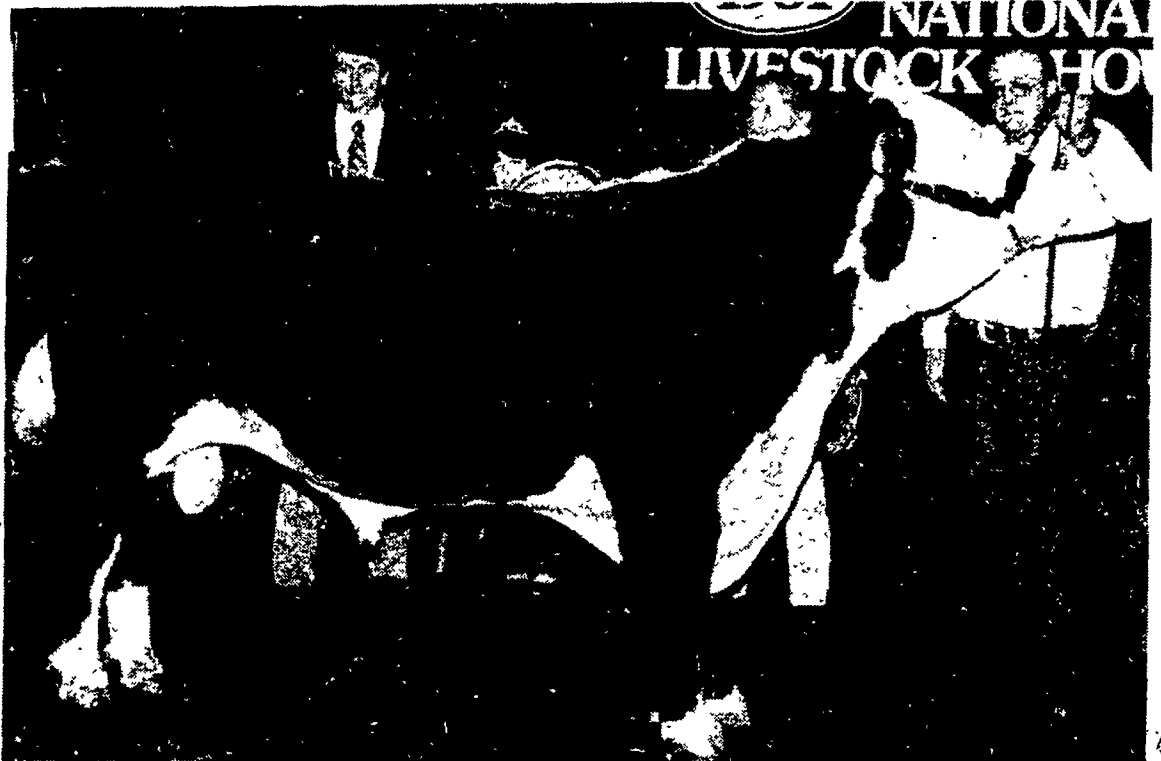
FLF Masterpiece captured Grand Champion honors at the Ohio State and Virginia State fairs. More recently the bull was named reserve grand champion of the Keystone International.

In addition to several individual class blue ribbons, Falklands Farm and co-owners claimed five champions by the day's end.

Their first champion arrived in the form of a heifer calf, sired by Enforcer. FLF Forcette 1003, a January 1981 calf, was dubbed champion heifer calf.

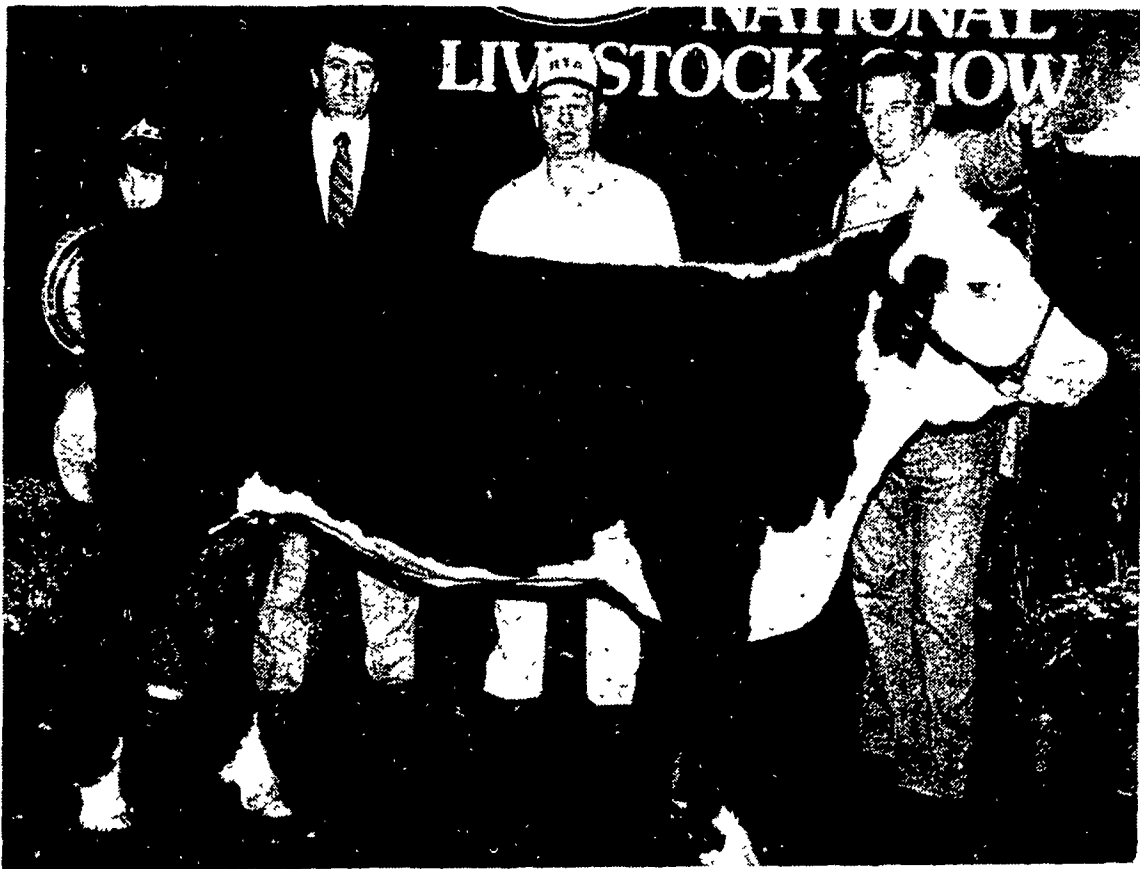
Judge Gillooly chose a Falklands yearling heifer as junior champion heifer. The junior champ, FLF Forcette 0067 bested more than 45 entires for the title. Falklands Farm took Reserve Senior Champion honors with their 2-year-old heifer, FLF Forcette 950.

Junior Champion Bull honors went to QRR Enforcer 107HM46.



The Grand Champ of the Ohio and Virginia state fairs continues his winning streak at the Eastern National. FLF Masterpiece, a 2½-year-old sired by Enforcer 107H is owned by Falklands Farm and Busby Farm, Schellsburg.

In the winners circle from left to right are, Michele Stull, Maryland Polled Hereford Princess, judge Jim Gillooly, show superintendent Herman Purdy and Jim Strawn, general manager of Falklands Farm.



ASB BO TEN, grand champion female of the Eastern National Polled Hereford Show, chalks up another champion rosette to her credit. The top female, reserve champ at last week's Keystone International is surrounded by from

left to right, Maryland Polled Hereford Princess Michele Stull, show judge Jim Gillooly, Ronald Mills, president of the Maryland Polled Hereford Assoc. and Don Kerr at halter, manager of Overlook Farms, Little Falls, N.Y.

The yearling is owned by Falklands Farm, Jim and Moe Barrington, Double NN-S Polled Herefords and Quail Run Ranch.

Gillooly selected a BCR Improver daughter, EVF Ms Wind Chill as reserve champion heifer calf. The reserve champ, a September 1980 calf is owned by Stephanie Earnhart, Leetonia, Ohio.

Pride and Joy, a September 1980 calf captured Champion Bull calf honors. The Will Via Justa V son is owned by Ace Polled Herefords, G&R Polled Herefords, Donald Riffel & Family and Sheridge Associates, Millbrook, N.Y.

Reserve Champion Bull Calf honors went to RTA Trustee-Vix 536, a February 1981 calf owned by R&T Acres, Gaithersburg, Md.

Gillooly went with Dunwalke Vicky 46M, owned by Michael Cummings, Westminster, Md., as reserve junior champion heifer.

Additional results from the Eastern National Polled Hereford Show follow:

CLASS 1
1 Triple "J" Farms, Richmond Va., 2 Walnut Hill Farm, Smithsburg Md., 3 Walnut Hill Farm, 4 Pleasant Knoll Farms, Frederick, Md., 5 Michele Stull, Sandy Spring, Md.

CLASS 2
1 Falklands Farm, champion heifer calf, 2 Ace Polled, 3 Pleasant Knoll Farms, 4 Royal Minor III, Richmond, Va., 5 Elizabeth Mullinx, Woodbine, Md.

CLASS 3
1 Stephanie Earnhart, reserve champion heifer calf, 2 Dream Acres, 3 Royal Minor II, 4 University of Maryland, College Park

CLASS 4
1 Overlook Farm, 2 William M Lillard, Quicksburg, Va., 3 Laura Luczkowski, Richmond, Va., 4 Falklands Farm, 5 Judy Helfrich, Belle Mead, N.J.

CLASS 5
1 Falklands Farm, junior champion heifer, 2 Michael G H Cummings, reserve junior champion heifer, 3 Kim Birney, 4 Stephanie Earnhart, 5 Laura V Tessler, Laytonsville, Md.

CLASS 6
1 Overlook Farm, 2 Pleasant Knoll Farms, 3 Ace Polled Herefords, 4 James & Robbyn Morris-shown by Triple "J" Farms, 5 Falklands Farm

CLASS 7
1 Greg Billing, grand champion heifer, 2 Overlook Farm, 3 Laura V Tessler, 4 University of Maryland, 5 N Carlyle Stull, Sandy Springs, Md.

CLASS 8
1 Falklands Farm, reserve grand champion heifer, 2 William D Ferrell, Mt. Airy, Md.

CLASS 13
1 R & T Acres, reserve champion bull calf, 2 Walnut Hill Farm, 3 Pleasant Knoll, 4 William Lillard, 5 Rustic Spring

CLASS 15
1 Ace Polled Herefords, C & R Polled Herefords, Donald Riffel & Family and Sheridge Associates, champion bull calf.

CLASS 16
1 Falklands Farm, 2 Falklands Farm & Thomp & West Farms, 3 Falklands Farm

CLASS 17
1 Falklands Farm, HVH Farms, Odell Gelvin & Oliver Rudd, Jr., 2 Falklands Farm, Diamond J Farms & Albert Littau, 3 Ridge Sunset Acres Farm, Westminster, Md.

CLASS 18
1 Falklands Farm, Dunwalke Farm Humboldt Corp & Lamington River Farm, 2 Falklands Farm & Gerhard Bros Gerhard Polled Herefords, 3 Whispering Oaks & Graystone Farm, Whitestone, Md.

CLASS 19
1 Ace Polled Herefords & J Square Farm Reserve Junior Champion Bull 2 Falklands Farm & Busby Farm, 3 William M Lillard, 4 Paul Deer Farm, Springfield, Ohio, 5 Mullinx Beef Inc

CLASS 20
1 Overlook Farm, B & C Polled Herefords & Hidden Hills Farm

CLASS 21
2 Triple "J" Farms

CLASS 22
1 Falklands Farm & Busby Farm Grand Champion Bull, 2 Overlook Farm & Travis Polled Herefords, 3 Falklands Farm & Pleasant Knoll Farms, 4 Falklands Farm, 5 William M Lillard

Get-Of-Sire
1 Falklands Farms, 2 Overlook Farm

Best Six Head
1 Falklands Farm, 2 Overlook Farm

Cow and Calf Class
1 Falklands Farm, 2 Triple "J" Farms; 3 Ace Polled Herefords & Ox Bow Ranch; 4 Pleasant Knoll; 5 Michael G H Cummings

Corn growers urge quick passage of Farm Bill

WASHINGTON, D.C. — "The House of Representatives should follow the example of the U.S. Senate in considering and completing its work on general farm legislation to replace the 1977 Food and Agriculture Act," the NCGA President Bill Mullins recently stated in a letter to Mr. E. De La Garza, Chairman of the House Committee on Agriculture.

In pressing for immediate House of Representatives action on general farm legislation, the NCGA farmer-president from Shabbona, Illinois, cited the impact that high interest rates and persistent inflation have had on U.S. corn farmers. While not completely satisfied with the Senate version of farm legislation, Bill Mullins stressed that a "realistic, workable and significant farm bill must be reached within the next few days to continue the authorities for

establishing loan rates, target prices, grain reserves and other measures to arrest any further declines in U.S. corn and agricultural prices."

The National Corn Growers urged De La Garza and other members of the House Committee on Agriculture to work with the U.S. Senate in accepting realistic, workable and significant loan rates and target price measures and report a farm bill to President Reagan for signature into law.

Mullins stated that "...this course of action would allow the Secretary of Agriculture to move ahead with confidence in implementing the following programs for corn," which should include:

➤ Immediate and early entry of 1981 corn into a farmer-held reserve not to exceed one billion bushels.

➤ A two "trigger release"

system, established at 140 percent and 170 percent of the prevailing loan rate, respectively, in order to provide greater farmer flexibility in marketing corn.

➤ Authorize at least 30 cents per bushel annual storage payment.

➤ In order to attract sufficient corn farmer participation, establish a supplemental 1981 reserve corn loan rate at a significantly higher level than the regular loan rate.

"Having these measures in place now would allow corn farmers to complete 1981 harvest with some certainty of loan rates and target price level measures commensurate with the prevailing cost of production for corn," Mullins concluded.

Jack Parsons, NCGA First Vice President and corn farmer from Wapello, Iowa, stated "in order to arrest any further declines in cash corn prices, the levels of which

have dropped to around \$2 per bushel in select locations in the Midwest, and to minimize federal expenditures and continued budget exposure in Fiscal Year 1981/82, the immediate opening of a farmer-held reserve for corn is necessary.

This decision by Secretary Block could prove to be a pivotal factor in beginning the recovery of farm prices from current levels unacceptable to U.S. corn farmers."

Parsons indicated that thousands of bushels of corn under loan in midwestern states have been forfeited to the Commodity Credit Corporation, and that additional large quantities of corn are anticipated to be turned over to CCC ownership in the very near future.

"If these developments continue, it is very conceivable that stocks of CCC owned corn could well soar to over 500 million bushels in the immediate future," he stated.

The NCGA official indicated that "...any hesitation in announcing the opening of the reserve due to the belief that such action would result in increased and unnecessary exposure to the federal budget in 1981/82 is unwarranted."

In addition to the prospect of expanded CCC ownership of grain, he commented that the revenues lost from interest payments due to defaulted loans and the excessive costs incurred by the U.S. Government in transporting and storing previously farmer-owned grain would certainly result in overall costs exceeding those resulting from the establishment of a farmer-held reserve.

"It is, therefore, illogical to further withhold an announcement on the opening of a farmer-held reserve for immediate and early entry of 1981 crop corn on the basis that economic pressures warrant further consideration."