

York Co. DHIA

(Continued from Page D16)

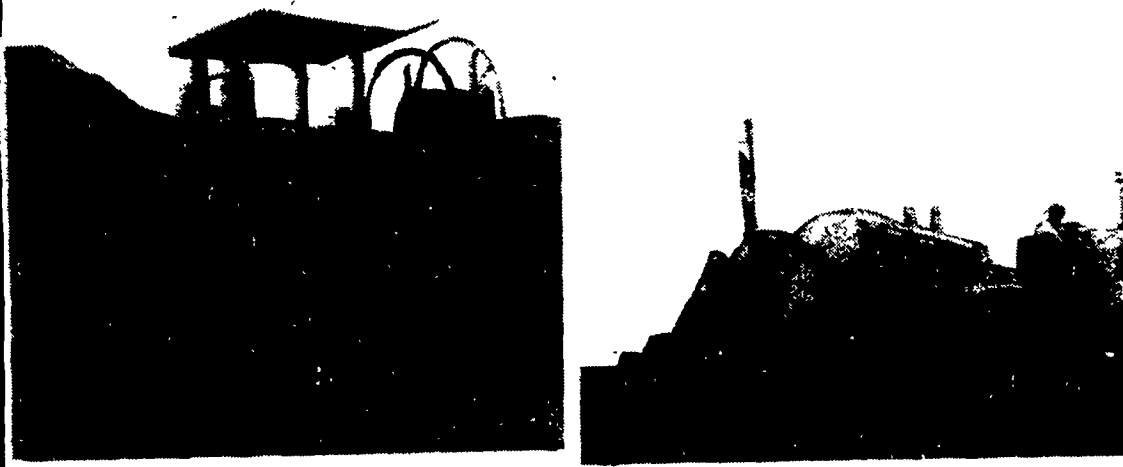
Rachel	3	3-3	305	14,167	3.8	542
Rick L. Cook						
Phyllis	3	3-9	305	15,377	4.0	621
Linda	3	3-0	305	16,811	3.8	639
Teddy	3	3-1	305	16,551	4.0	660
Sydney	3	2-0	275	12,340	4.3	534
J. Donnell Taylor						
Suckey	3	5-0	305	19,954	3.2	648
Brook	3	4-9	305	16,413	3.3	543
Bupplynn Farms Farm 2						
Cashmer	3	6-1	305	17,285	3.6	623
Elvin G. Mohson						
76	3	7-10	305	15,719	4.1	649
11	3	5-5	305	16,022	3.8	609
66	3	5-0	278	14,893	5.4	804
95	3	5-7	305	13,886	3.6	505
23	3	4-6	305	17,602	4.4	782
97	3	4-4	305	17,250	3.7	646
101	3	4-7	305	18,418	3.4	625
14	3	3-10	304	15,320	3.4	523
40	3	2-9	305	13,037	4.1	528
117	3	2-4	305	16,133	4.1	664
115	3	2-1	305	13,612	4.1	557
Daryl L. Barr						
Galena	3	6-3	305	18,266	3.6	660
Connie	3	5-2	305	17,442	3.5	611
Voni	3	2-11	305	16,194	3.4	551
Shinky	3	3-2	297	18,706	3.0	556
Mervin W. Hertzler						
Flower	2	5-8	296	12,489	4.6	577
Sugar	2	7-3	305	10,889	5.0	546
Becky	2	3-0	305	11,784	5.0	586
Carol	2	3-4	305	14,615	4.5	664
Gary W. Thoman						
19	3	10-0	305	17,868	3.3	590
Nadia	3	3-8	305	12,873	4.4	561
Design	3	4-4	305	14,773	3.9	574
B. Robert Charles						
Blossom	3	5-3	285	18,102	3.8	689
Carol	3	4-3	305	20,279	3.8	766
Donna	3	3-10	281	16,794	3.5	594
Cookie	3	4-3	296	19,147	3.8	724
R & M Farms						
80	3	7-8	305	13,486	4.2	570
44	3	6-3	305	13,409	3.8	513
45 H	3	2-11	305	11,779	4.6	543
47	3	2-3	305	13,186	4.4	582
Laverne & Judith Hess						
55	3	5-0	305	11,920	4.5	541
Edwin L. Cathoun						
51	3	7-10	305	18,044	3.7	674
73	3	3-2	305	14,721	4.6	674
100	3	2-1	272	12,799	3.9	505
Eugene B. Taylor						
Sandy	3	5-0	305	18,787	3.3	625
Robert W. Mays						
53	3	5-1	305	16,536	3.1	506
17	3	5-9	293	19,001	3.7	702
15	3	7-4	273	17,474	3.3	583

10	3	3-0	305	14,355	4.4	635
34	3	3-8	298	18,503	3.2	595
David L. & Chris Druck						
6	3	3-11	305	17,324	3.8	666
18	3	5-11	299	16,285	3.7	601
55	3	7-11	286	18,669	3.8	520
49 Y	3	2-1	305	16,147	3.5	570
Dale L. Barshinger						
112	3	3-1	305	14,260	4.4	629
Albert Neufeld						
46	3	6-10	305	17,473	3.3	574
14	3	5-10	305	15,661	3.6	569
16	3	3-10	305	15,894	3.6	579
17	3	5-11	305	15,383	3.6	559
81	3	3-10	305	14,971	3.6	539
115	3	4-11	305	18,803	3.3	622
129	3	3-11	305	15,682	3.9	608
139	3	5-11	295	15,185	3.4	509
112	3	6-9	305	15,711	3.6	558
Robt. Baumgardner Jr						
10	3	6-11	305	16,161	3.7	600
Jacob Brubaker						
73	3	6-2	289	18,219	3.9	715
17	3	6-11	300	15,889	3.3	529
Charles Hess						
46	3	6-2	305	19,547	3.6	702
8	3	6-11	305	16,863	3.7	621
77	3	6-2	305	12,512	4.1	517
5	3	8-0	305	14,804	3.8	561
John C. Krone						
Lady	3	3-10	305	21,411	3.2	681
Joan	3	3-9	281	14,716	3.5	510
Rita	3	2-7	305	15,982	3.8	605
Walkers Farm						
209	3	2-11	292	16,157	4.1	660
221	3	3-11	305	14,469	4.1	590
423	3	3-0	305	18,657	3.2	594
202	3	3-11	305	16,437	4.4	720
215	3	3-11	305	18,737	3.8	718
411	3	2-11	305	16,586	3.2	531
8	3	11-0	280	20,356	3.9	794
231	3	2-0	289	15,659	3.5	551
Leland Stantord						
115	3	7-0	284	19,522	3.4	660
131	3	4-11	305	14,599	3.4	502
149	3	4-11	305	18,967	3.7	701
69	3	2-11	305	16,967	3.6	619
Perrydell Farms						
12	3	4-11	305	17,499	3.4	588
13	3	2-11	305	17,330	3.3	574
71	3	3-1	271	13,721	3.7	514
111	3	5-11	305	14,156	3.9	548
115	3	2-11	292	12,089	4.8	577
116	3	2-11	305	12,860	4.4	567
129	3	4-0	305	19,059	3.5	667
130	3	4-3	208	16,340	3.8	615
7	3	1-11	304	13,736	4.0	549
Robert Buser						
20	3	2-11	305	14,799	3.8	565
62	3	5-0	281	15,185	3.6	550
David Stewart						
Daisy	3	8-5	305	20,209	3.3	674
Crystal	3	5-7	305	23,060	3.4	791
Lupe	3	4-9	305	17,714	3.5	628

Lancaster Farming, Saturday, October 10, 1981-D17

Sharon	3	3-4	279	18,084	3.5	635
Peara13	3	7-3	305	17,976	3.8	685
Fro 75	3	6-8	305	20,448	3.6	741
Blenda6	3	4-8	291	26,353	2.8	745
Mazie85	3	4-0	305	20,125	3.4	686
Fame 9	3	2-11	305	18,686	3.5	659
Boots33	3	3-2	305	14,703	3.7	547
Floy	3	7-9	305	17,030	3.3	565
Cass	3	2-3	305	18,909	4.4	617
Ella	3	2-10	305	14,443	3.7	529
Rich & Steven Staner						
Rosalie	2	5-5	305	9,739	5.6	542
Ccharme	2	4-0	305	23,528	3.7	871
Lilah	2	3-3	305	12,700	5.1	643
Elrhart	2	2-0	305	11,630	4.5	521
Walnut Hill Farm						
Kas	3	6-0	305	15,318	3.5	537
Patty	3	4-10	305	17,471	3.1	550
Honey	3	6-11	289	18,518	3.7	683
Licky	3	9-11	305	19,692	3.1	615
Elaina	3	1-10	305	14,690	4.0	592
Fawn Meadow Holstein						
56	3	6-2	305	15,477	4.1	629
107	3	3-3	305	16,846	3.9	662
135	3	2-0	305	18,592	3.5	643
32	3	2-5	305	12,978	4.5	586
Double D Farm						
24	3	11-5	305	12,383	4.7	587
D-87	3	6-11	305	14,380	3.9	559
D-116	3	4-11	291	16,040	4.1	658
D-117	3	5-1	251	17,004	3.6	608
Dale Clymer						
Milly	3	8-7	305	14,868	4.0	590
Deal Holsteins Farm						
93	3	2-2	305	13,740	3.9	534
103	3	2-6	292	11,988	4.4	526
234	3	8-6	305	14,919	4.0	593
Jerry A. Krone						
Azalia	2	6-1	459	17,267	5.4	933
Lynn	2	9-6	329	12,785	4.8	608
Lassie	21	6-11	305	11,895	4.9	577
McRal Dairy Farm						
321	3	8-0	305	21,600	3.2	693
407	3	5-8	305	16,359	4.6	757
475	3	3-7	305	19,828	3.6	714
481	3	3-1	305	19,626	3.6	710
141	3	2-0	305	15,888	3.5	552
William Ruppert						
Model	3	10-9	305	13,931	4.1	566
Wendy	3	6-9	305	17,912	3.6	640
Donna	3	2-0	305	14,965	3.5	525
Eisenhart Bros.						
208	4	6-4	305	13,567	4.8	650
200	3	6-9	300	14,830	4.1	607
225	3	5-7	305	20,782	3.8	789
257	3	3-10	305	16,085	3.6	572
Wayne E. Myers						
Julie	3	5-6	305	20,558	4.2	867
Nat	3	8-2	305	27,516	3.6	983
Canary	3	1-10	305	14,617	3.9	563

DRAINAGE PROBLEMS?

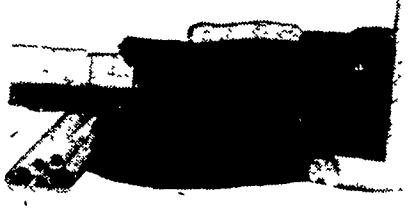


COCALICO EQUIPMENT HAS THE TWO MACHINES TO HANDLE YOUR DRAINAGE PROBLEMS.
 ★ Both machines Equipped with Laser Beam Grade Control

Investment	Typical Annual Return
Land Drainage	21-46%
Farm Buildings	3-23%
Farm Land	11%
Stocks	7.4%
Bonds	6.1%

COMPARE
 Even with the conservative figures shown here, it's obvious that land drainage should top farmers' lists of investment priorities.

★ We Stock Heavy Grade Tubing which Exceeds SCS Specifications. In sizes 4", 6", 8", 10" and 12".



NOW AVAILABLE 15" & 18" Tubing

★ Also Pipe And Fittings For Tile Outlet Terraces.

COCALICO EQUIP. CO.
 DRAINAGE & EXCAVATING
 RD #3, DENVER, PA 17517 PH: 215-267-3808



Increase Fertilizer Efficiency. Spread ...

AG LIMESTONE

Truck Spreading Service Of
AG LIMESTONE AND ROYSTER BONANZA FERTILIZERS, UREA, AND AMMONIUM SULFATE OR TRACTOR SPREADERS AVAILABLE.
 We handle Fertilizer in bulk and bags, retail and wholesale.

— ALSO —
ARCADIAN GOLDEN URAN 30%, Poly-N 10-34-0, or prescription liquid mix fertilizer wholesale or spread. Plus retail Insecticides and Herbicides.

Fortified with a new combination of Power-Packed Ingredients!



- Grain Distillers Solubles
- Ammonium Polyphosphate
- Condensed Fermented Corn Extractiv

Call Us For Your Chemical Needs.

MARTIN'S AG SERVICE

c/o JOHN Z. MARTIN
 RD 1, Box 716, New Holland, PA 17557
 Phone: 717-354-4996 or 354-5848