

**HELP WANTED**

**FEED MILL SERVICING**

Montgomery and Bucks County wants full time employee to work and learn all aspects of operation. Expect promotions to production manager, supervising people and equipment and coordinating orders and deliveries.

Write to  
Lancaster Farming  
Box 366 K-15  
Lititz, PA 17543

**EGG SALES MANAGER**

\$18,000-\$24,000 range. Blue Cross-Blue Shield coverage included. Experience & knowledge in egg quality, egg pricing & egg sales is necessary. Processing plant experience helpful but not necessary. Will pay moving costs. Send resume & comments to  
**Quality First Acres Inc.**  
RD 2 East Berlin, PA 17316  
Attn: Thomas E. Trone  
Call 717-259-0102 for interview appointment

**TRACTOR TRAILER DRIVERS**

**Experienced**  
Go in business for yourself, be your own boss, be an owner-operator, above average earnings, steady yr. round work.  
**Call Hank**  
**215-326-2200**

**DAIRY HERD MANAGER**

Experienced person wanted to take full responsibility of a large dairy herd. Excellent housing and facilities available. Salary and benefits to match the position. Send resume to Box 366 K-12, c/o Lancaster Farming, Lititz, Pa. 17543

**WANTED**

**HERDSMAN** to work with top registered Holstein herd in PA. Responsibilities would include milking, feeding and caring for animals, no field work. Housing, hospitalization and vacation are included.

For More Information Call  
412-463-3425 after 7 P.M.  
or write  
Box 278, Rd 1  
Indiana, PA 15701

**HELP WANTED**

**FARM MANAGER**

Registered herd of polled Herefords has managerial position available for experienced top cattleman. Good salary benefits and home provided.

609-921-1777  
or  
315-445-7003

Position soon available for milking herdsman in modern dairy operation. Excellent salary, housing and fringe benefits. Will also interview experienced man to work on farm. Must be familiar with equipment. Reference required and kept confidential. Interview by appointment only. Do not apply in person unless notified.

Phone Jim Swan  
703-825-1607 after  
6 P.M. or write  
P.O. Box 876,  
Culpeper, VA 22701

**BUSINESS OPPORTUNITIES**

**A Golden Opportunity - Joanne Kimberly Jewelry Party Plan has openings for Managers in your area - No cash investment, No collecting, No deliveries. Car and Phone necessary. Call Collect: KATHY DRAKE - (518) 489-4420 489-4429**

**BUSINESS OPPORTUNITIES**

**WANTED**

Self motivated individual for direct to farm route sales. Excellent earnings potential. Company sales training program. Unusual opportunity to join an aggressive, dealer minded organization. Openings in Bedford, Blair, and Union Counties.

Contact  
Larry Hughes,  
I.B.A. of Central PA  
717-263-1965

**SITUATIONS WANTED.**

Experienced married person seeking position on dairy farm as milker and general farm person. Prefer stall barn setup. House must be provided. 717-345-8939

Responsible married man looking for part-time job on dairy farm. Want to learn all aspects of dairy business. Salary optional. Allentown 215-395-8377

Young couple would like to rent dairy farm with free stall and parlor. Write Box J-195, c/o Lancaster Farming, Lititz, Pa 17543

Wanted position as working manager, have dispersed my registered and grade Holstein herd, 17,000 lb RHA excellent in herd health. Calf mortality "0" since October 1978. Prefer stall set-up w/large responsibilities. Available immediately, married w/family. For more particulars Call 201-782-1679

Responsible married man with some experience seeks long term employment to learn all aspects of beef, dairy or pig operations. 215-485-6103

Father and son team wanting to manage a large beef and crop farm or a large dairy farm. Experienced with large operations, education, expensive agriculture and farm background. Excellent references. Write Lancaster Farming Box 366 J-196 Lititz, PA 17543

Ambitious, young, experienced dairyman seeking position with management on dairy farm. References available. Non-smoker and non-drinker.

Write  
Lancaster Farming  
Box 366 R-79  
Lititz, PA 19543

**BUSINESS OPPORTUNITIES**

Established liquid fertilizer business. Tanks, trucks, and all accounts. Write Lancaster Farming, Box 366 J-194, Lititz, PA 17543

**TRUCKS & TRAILERS**

For Sale - '76 Chev. Silverado crew cab truck, dual rear wheels, 5th wheel and bumper hitch, fresh engine, new tires, 4 speed, AM-FM, air, \$5500. 301-848-1424.

Howe truck scales, 5 coal chutes and conveyor, going out of business. Call 201-362-6910.

Used 1980 Ford F-100 Lariat model. 6 cylinder, 11,000 miles, chrome wheels, deluxe trim throughout. Immaculate condition. 215-777-1918

1967 IH 1600 Loadstar 20,000 GVW 12' steel bed. Hydraulic dump. 35,000 original miles. \$2500. 301-592-2413

1970 Ford C-7000 18' steel dump bed, 600 bu capacity, 175 hp Cat diesel, new tires, best offer over \$5000. 717-532-9501

**TRUCKS & TRAILERS**



1971 Ford C8000, 225 cat. Power steering, good tires, triple frame, 1 1/2 ft. frame. Good condition \$10,500

**CURRY SUPPLY**

Curryville, Pa.  
814-793-2829



**1978 GMC CATTLE TRUCK**  
15 ft. bed,  
V8, 350 Engine, 6000 Series  
717-529-2614

**TRUCKS & TRAILERS**

1973 Brockway 318, 15 speed wetline, full screw, Mack B6/ w/18' grain body and 18 ton hoist, 24' steel dump trailer w/22' rubber. 717-865-6710

Wanted - 1 ton truck with 10-12' aluminum cattle body. Call evenings. 201-369-4120.

For Sale - gooseneck flatbed trailer, 21,000 lb gross, triple axle, 32' bed, ideal for hauling equipment, hay or straw, 1 yr. old, good shape. \$4500. 301-848-1424

**TRUCKS & TRAILERS**

36' flat bed trailer, good condition. 717-532-9271. Aluminum dump trailer, 22', fair condition, 717-532-9271

For Sale - IH-4070 diesel COE tractor 250 Cummins, \$4000 or reasonable offer. 717-865-3488

1971 Diamond Reo, cab over motor and transmission rebuilt \$8,000. 814-448-2260

1980 gooseneck trailer 16' \$2000 or best offer 717-656-8567

**LANCASTER**  
1710 Rohrerstown Rd.  
717-569-2648  
**YORK**  
1116 Roosevelt Av.  
717-848-6400

**AVIS TRUCKS**

**USED TRUCKS**

**EXCEPTIONALLY CLEAN AND WELL MAINTAINED**

**1977 FORD ECONOLINE** E250  
300 cyl. engine, auto trans. radio, new paint.

**1976 & 1977 CHEVROLET 12' STEP VANS** P30  
Matched Fleet - Will sell one or more, etc., 350 V8 engine, 4 speed transmission, dual rear wheels, aluminum bodies, with or without new paint.

**1975 CHEVROLET 20' & 22' VANS** TE67  
with or without lift gates, 366 V8 engine, 5 speed or automatic transmission, power steering, radio, new paint.

**USED TRACTORS**

**1974 CHEVROLET** HI9143  
Single axle diesel, conventional cab, 238 Detroit engine, 10 speed transmission, P.S., new paint, recent overhaul.

**1975 CHEVROLET** Titan 90  
Tandem axle diesel sleeper, 318 Detroit engine, 10 speed transmission, PS, AC, with or without new paint.

**1975 CHEVROLET** Titan 90  
Single axle diesel sleeper, 238 Detroit engine, 10 speed trans., PS, A/C, just overhauled, with or without new paint.

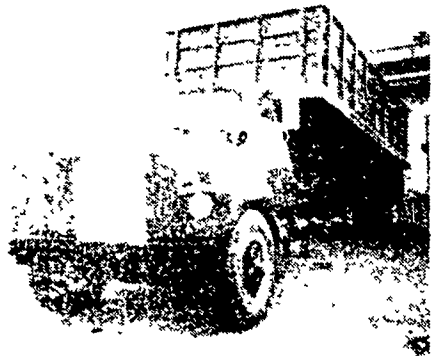
**1976 PETERBILT** 352S86  
Tandem axle diesel sleeper tractor, 350 Cummins engine, 13 speed transmission, power steering, A/C, recent overhaul.

**1977 GMC** JC 9640  
Tandem axle diesel, conventional cab, NTC 290 Cummins engine, 10 sp. trans., 38,000 rear axle, PS, AC, low mileage

**USED BODIES**

**14' REFRIGERATED VAN BODY**  
1975 Duralite aluminum smooth skin, extruded aluminum floor, new paint, XMT20D thermoking unit with electricity standby.

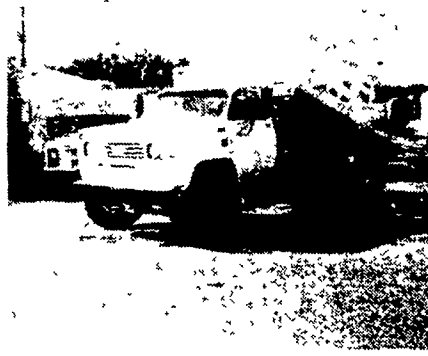
Complete maintenance records available for inspection. Other makes, Models & types to choose from.



1972 Int. D 2000 - 18 ft. new grain body or 1972 - 1600 with new grain body - 5 + 2 - A/B GVW 34,000.



1968 F 800 Ford, 5 + 2, A/B - 16 ft. grain body - GVW 33,000, also 4 others to choose from.



(4) 1977 Chev. C 60 - 14 ft. stake body dump truck - newly reconditioned.



1974 LN 600 Ford - 20 ft. Van body - roll up rear door - side door - (3) to choose from.

**MARTINS TRUCKSVILLE**

560 Lampeter Rd., Lancaster, PA 17602  
Phone 717-392-6266 BOB MARTIN

**ALL TYPE OF REF. TRUCKS - GRAIN BODIES - DIRT DUMPS - TRUCK TRACTORS - SINGLE AXLE - TANDEM AXLE**

More than 100 trucks to choose from.