

At Reading Fair

Seidel shows champion market hog

By LAUREL SCHAEFFER
Staff Correspondent
READING — In market hog competition at the Reading Fair last week, a Duroc crossbred gilt shown by Charles Seidel, Lenhartsville walked away with champion honors.
Charles, 15 is the son of Mr. and Mrs. Robert Seidel and a tenth

grade student in the Hamburg Area School District. He has been showing hogs for seven years in 4-H and is also a member of the Hamburg FFA.
Reserve Champion Market Hog was awarded to a Hampshire-Duroc crossbred shown by Terry Snyder, Hamburg. Terry is the 17-

year-old son of Mr. and Mrs. Kermit Snyder. He has been showing in 4-H for the past six years and presently is in tenth grade.
The show results are:
Light Lightweight
1 Henry Seidel, Lenhartsville, 2 Harold

Dietrich, Kutztown, 3 Kenanne Rarick, Reading, 4 Kenanne Rarick 5 Jan Adam, Hamburg
Heavy Lightweight
1 Mark Rohrbach, Hamburg, 2 Harold Dietrich, 3 Kirk Fisher, Oley, 4 Gred Stricker, Bernville, 5 Jan Adam, Hamburg
Light Mediumweight
1 Steve Rohrbach, Hamburg, 2 Gary Rohrbach, Hamburg, 3 Steve Rohrbach, 4 Terry Adam, Hamburg, 5 Terry Adam

Heavy Mediumweight
1 Charles Seidel, 2 Allan Rohrbach, Shoemakersville, 3 Gred Stricker, 4 Mark Rohrbach
Light Heavyweight
1 Charles Seidel, 2 Terry Snyder, 3 Allan Rohrbach, 4 Terry Adam, 5 Terry Adam
Medium Heavyweight
1 Terry Snyder, 2 Kent Fisher, 3 Henry Seidel, 4 Kent Fisher



Charles Seidel, Lenhartsville, guided his Duroc crossbred gilt to the winner's circle at last week's Reading Fair.



Terry Snyder, Hamburg, showed the reserve champion market hog.

RHINO FALL FLING

Area RHINO dealers will offer RHINO units at special discounts to area farmers on a first come first serve basis.

ROTARY CUTTERS

MEDIUM DUTY

	SAVE!
9-SAT-4 four foot	\$168.00
9-SAT-5 five foot	\$294.00
7-SAT-6 six foot	457.00
3-SAT-7 seven foot	481.00
2-SAT-8 eight foot	732.00

HEAVY DUTY

	SAVE!
1-CY-60 five foot	\$591.00
1-G-84 seven foot	1154.00
2-OS CY-128 10'8"	1382.00
1-G-1310 13'10"	1455.00
2-FS-15 flex wing 15'	1547.00
1-F-20 flex wing 20'	3045.00

REAR BLADES

	SAVE!		SAVE!
14-R-100	\$150.00	13 - Landscape rakes	\$164.00
112 - LR	117.00	3 - R-950	443.00
34 - BR	230.00	4 - R-1500	419.00
21 - R-900	260.00	3 - R-2000	770.00

TILLAGE EQUIPMENT

WHEEL TANDEM

	SAVE!
1-R-62 7'11"	\$663.00
4-R-62 9'4"	716.00
5-R-62 10'9"	834.00
1-R-83 9'4"	843.00
4-R-83 10'9"	1085.00
5-R-83 12'2"	1418.00
3-R-83 13'6"	596.00
1-R-84 20'9"	2866.00
5-R-131 9'11"	1350.00
6-R-131 11'5"	1466.00
1-R-131 12'11"	1792.00

FLEXIBLE WINGS

	SAVE!
1-F90B 15'0"	\$2977.00
1-F90B 16'5"	3010.00
1-F90B 17'8"	3152.00
2-F90B 18'10"	3267.00
1-F90B 23'7"	3846.00
1-F90B 24'9"	3982.00

CHISEL PLOWS

	SAVE!
1-R-156 5'	\$329.00
3-R-156 7'	311.00
3-R-156 10'	488.00
2-R-156 11'	339.00

OFFSET HARROWS

	SAVE!
1-R-127 7'3"	\$1100.00
1-R-127 8'0"	642.00
2-R-127 9'6"	1316.00
1-R-137 18'6"	2637.00
1-R-167 8'0"	1220.00
1-R-167 8'9"	1210.00
4-R-167 10'5"	1572.00
1-R-167 12'1"	1700.00
1-R-187 13'9"	2313.00
1-R-187 17'1"	2654.00

CULTIVATORS

	SAVE!
1-R-801 5'	
1-R-804 19'	\$1325.00

Now you can buy famous RHINO quality at BARGAIN BASEMENT prices! An average of only 3 units per dealer will be available, so HURRY! NOW is your opportunity to move up to RHINO quality and SAVE BIG.

CALL OR STOP BY YOUR NEAREST PARTICIPATING RHINO DEALER TODAY LISTED BELOW.
OFFER EXPIRES OCTOBER 30th 1981.

BINKLEY & HURST	Lititz, PA.	(717) 626-4705
C.B. HOOBER	Intercourse, PA	(717) 768-8231
HOOBER EQUIP.	Sudlersville, MD	(301) 758-1212
ERB & HENRY	New Berlinville, PA.	(215) 367-2169
S. HOVER BROS.	Carlisle, PA.	(717) 243-2686
CHAMBERSBURG FARM SUPPLY	Chambersburg, PA.	(717) 264-3533
MELROSE FARM SUPPLY	Green Castle, PA	(717) 597-3138
E.T. CLINE & SON.	Hagerstown, MD	(301) 739-2223
STOLTZFUS FARM SER.	Cochranville, PA.	(215) 593-2407
*KNOTT & GEISBERT	Urbana, MD	(301) 662-3800
SAWYER BROS.	Cecil, MD	(301) 275-8200
V.V. HUGHES	Salisbury, MD.	(301) 742-1166
CAMBRIDGE TRACTOR	Cambridge, MD	(301) 228-8111
CHAIR BROS.	Queen Sun, MD	(301) 820-2140
SPERRY NEW HOLLAND	Crersville, MD	(301) 662-4191
WHITTIER ARNOLD	Purcellville, VA	(703) 338-7123
GIBSON FARM SUPPLY	Ingleside, MD	(301) 758-0262

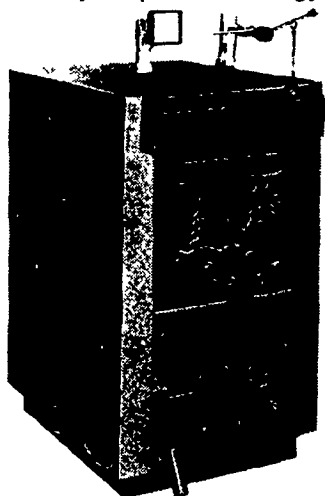
TIMBER EZE

Ingenious Wood/Coal Boilers

NOW AVAILABLE...

WOOD AND COAL BURNING BOILERS DESIGNED TO TIE INTO ANY HOT WATER HEATING SYSTEM

This means you can now heat your entire home with wood or coal and since this is an add-on boiler, you can use your present energy source — gas, electric, oil or solar, as desired, when not using wood or coal — the less costly fuels during frigid weather. The Timber-Eze boilers are engineered using space age technology for squeezing maximum BTU's of energy from solid fuels utilized in the heat chamber.



- Non-jamming intermeshing heavy duty cast iron grates
- Automatic dual draft system
- Designed and built to comply with the ASME Code
- Firebrick lined
- Extremely heavy construction
- Insulated jacket
- 12 and 19 gallon reservoir
- 1 1/2" Fiberglass insulation 3 sides.
- Wine color finish

BE INDEPENDENT OF UTILITY INCREASES — BUILD UP A SAVINGS ACCOUNT BY OWNING A TIMBER EZE

A.R. FLAUD SALES

Timbereze Distributor & Sales

RD #2, Rock Road, Honey Brook, Pa. 19344

For More Information Call 215-273-3211

DEALER INQUIRIES WELCOME