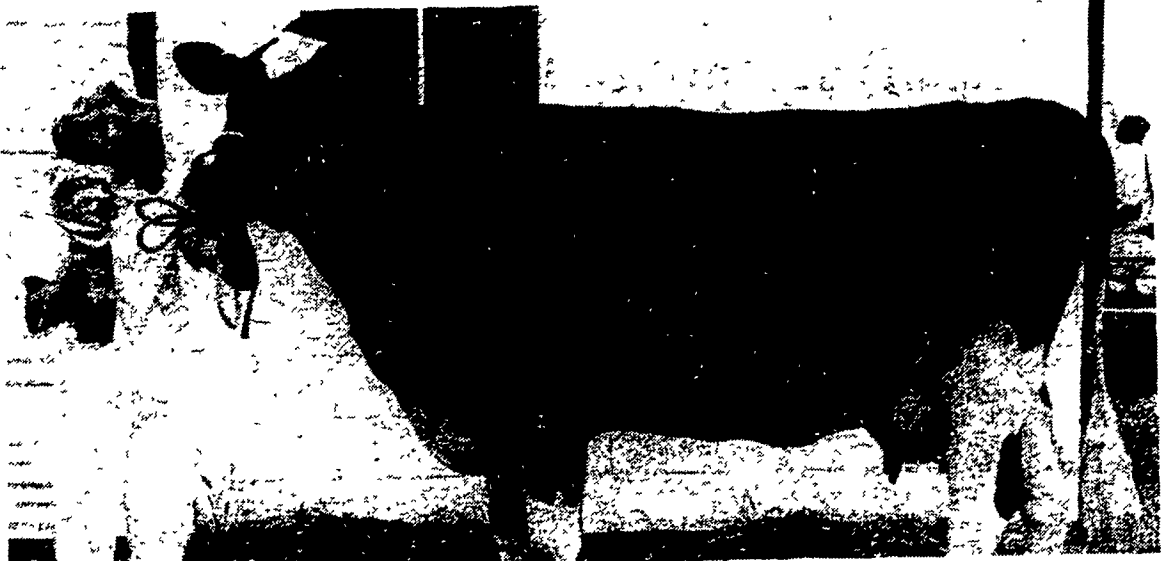


# Bloomsburg Fair winners



Hard work pays off, especially for these two members of the North-Mont 4-H Dairy Club. Bonny Sue Wolfe, left, displays the rosette she won for tops in showing and fitting her Guernsey, Queen. The 14-year-old junior division champion is the daughter of Paul and Doris Wolfe, Sunbury. Jean LeVan, right closed out her last year of 4-H in style by taking the senior division title in showing and fitting with her appropriately named white Holstein, Casper. Jean, 19, is the daughter of Clifford and Roxy LeVan, Milton.



One of the youthful winners of Wednesday's dairy show was Sandy Shuman, 14, of Bloomsburg. Sandy's 3-year-old cow, an Elevation daughter was chosen as reserve grand 4-H champion. Because of her hard work in assisting her family during calvings, Sandy was allowed to choose any calf she

wanted for a 4-H project. Since she picked the big black Holstein 3 years ago, Shuman Burk Rag Apple Cherie has provided Sandy with two heifers — Valiant and Conductor daughters. Sandy is the daughter of Duane and Betty Shuman, Bloomsburg.



Grant Lazarus proudly displays the fruits of victory as his Spotted Hog continued her winning ways and was named Supreme Champion Sow of the Bloomsburg Fair Hog Show on Tuesday. Earlier this year, the Germansville farmer's eleven-month-old sow was named senior champion at the New York State Fair.

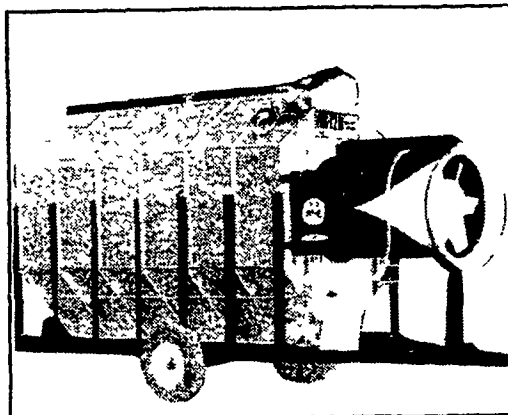


**Evergreen Tractor Co. Inc.**  
30 EVERGREEN RD., LEBANON, PA 17042  
PHONE (717) 272-4641

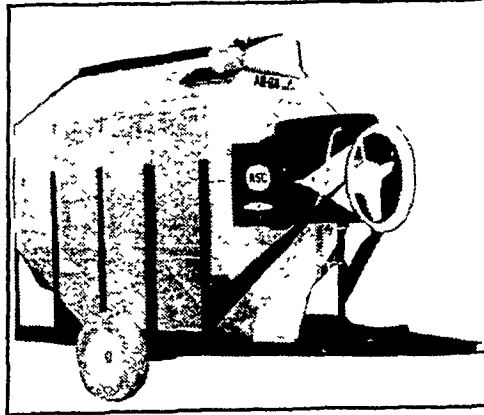
AUTHORIZED  
**SPERRY-NEW HOLLAND**  
PARTS and SERVICE



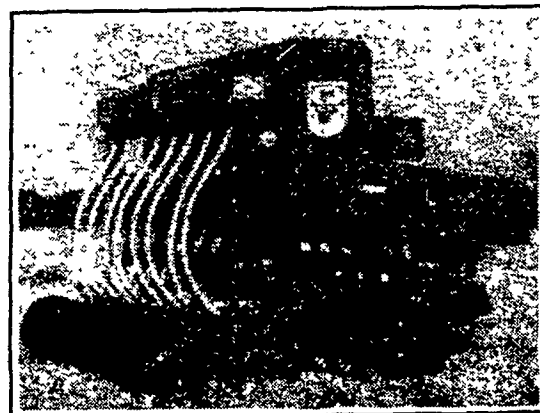
## INVENTORY SPECIALS



**MODEL AB-12B**  
"Temper Dries"  
to 310 Bu. Per Hr.  
**\$8300<sup>00</sup>**

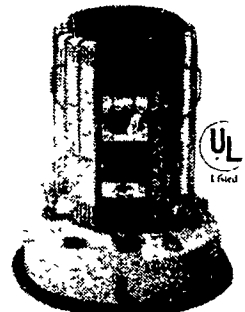


**MODEL AB-8B**  
"Temper Dries"  
to 210 Bu. Per Hr.  
**\$6500<sup>00</sup>**



**TYE Pasture Pleaser**  
A conveniently sized tool for minimum tillage seeding of legumes, grasses, small grains or soybeans in stubble sod, permanent or improved pasture.  
**\$3475<sup>00</sup>**

**SAVE**  
**'30 - '60**  
**PRE-SEASON**  
**SALE**  
Includes All Models



**BOWMANS**  
**STOVE**  
**SHOP INC.**

Follow Signs from Light at Hinkletown on Rt. 322  
717-733-4973  
R.D. 3 Napierville Rd., Ephrata, Pa.  
Tues., Wed., Sat. 9-5  
Thurs., Fri. 9-9  
Closed Monday  
Financing Available

