

LEE WILBUR DAIRY DISPERSAL

Brookdale, Pa Susq. Co.

Due to retirement I will sell my dairy at the farm. Located 3 miles W. of Brookdale & Pa. Rt 29 on the Rhiney Creek Road, 14 miles N. of Montrose, 14 miles S. of Binghamton, N.Y., 5 miles W. of Interstate 81 at Kirkwood-Conklin Exit.

SATURDAY, OCTOBER 10, 1981
12:00 P.M.

- 89 HI-GRADE HOLSEINS 89 -

All 30 day TB & blood tested free herd. Penna. & Interstate charts. Several calfhood vaccinated. Examined for pregnancy by Dr. Hollister. Injected for health shots.

This top producing Susq. Co. herd consists of 61 milk cows, 18 fresh, 14 due in Nov. & Dec., several bred for early winter, 13 nice first calf heifers - fresh & close springers, 15 - 3 to 9 mo. old calves from my good producing dams.

Sale Highlights: RHA 16,143m 3.7% 602f. Individual actual DHIA: 66B - 323d 20,343m 990f, 12E - 333d 22,030m 805f, 27C - 307d 17,211m 543f., 45A - 233d 16,060m 648f., 21E - 351d 19,026m 763f., 11F - 2 yr. 5 mo. 152d 10,906m 4.1% 450f., 52 D - 1 yr. 10 mo. 320 d 15,600m 495F., 2E - 14,607m 556F.

The majority are dau's of Eastern Sires with the exception of 3 grade Elevation dau's just fresh w/quality & production you will see.

These cows will please the most critical buyer, young, show plenty of size, type & production you will see.

Be sure and attend this fine dispersal Oct. 10. 18x60 Silo w/good 1981 Haylage.

Terms: Cash - app. F.H.A. checks or app. Bank checks.

Tent - Lunch

Owner

MR. & MRS. LEE WILBUR

Hallstead RD #, Pa.

M.L. Bunnell Auct. & Sale Mgr.
Poulsen, Poulsen & Weaver Auctioneers
Ph. 965-2375

KEN BUCK ESTATE AUCTION

Windham Township Bradford County, PA

Due to the death of Mr. Buck we have been commissioned to sell on

SATURDAY, OCTOBER 10, 1981

At 10:00 A.M.

At the farm on Peck Hill Road, 1 1/2 miles west of Windham Center, (Rte. 187) off Windham-Athens Road, Watch for arrows off 187 at Windham Center which is 4 miles south of Nichols, N.Y. (Exit 62 off Rte. 17 Expressway) or 15 miles north of Towanda, Pa.

ANTIQUÉ FURNITURE

High back beds & dressers; marble pieces; 2 spinning wheels, yarn winders; secretary; blanket chest; wash stands; oak table; oak chairs; Larkin kitchen cabinet; Larkin desk; trunks; library table; kids wagon; butter churn crock w/blue; picture & bowl; kero lamps; kero lanterns; kitchen clock; shadowbox; drop leaf table; rockers; quilts; Fedrand-Vetey Organ (nice) & another organ; Victrola; old wood washer; 3 ox-yokes; Iron Kettle; wooden shovel; sleigh bells; grain cradle; bottles & jars; crocks; dog tread; sewing machine; mirrors; Queen Anne table; wood planes; old tools.

HORSE DRAWN FARM EQUIPMENT

Sulky plows; grain drill; potato hiller; cultivator; dump rake; assorted harness; buggy seats; Ohio #11 stalk cutter; grain binder; plow; bob sled; lime sower.

HORSE WAGONS

Democrat wagon; Sleigh; heavy wagon; plus others.

OLD FARM ITEMS

Milk cans; corn shellers; Fan Mill; Burr Mill some household goods.

AUCTIONEERS NOTE: Many primitive antique items. Surely a sale with something for everyone. A real old fashioned country auction.

TERMS: Cash or good check
Lunch available

MARY BUCK,
Owner

Howard W. Visscher
Sales Manager & Auctioneer
Nichols, N.Y.
607-699-7250

Public Sales Register

SAT OCT 17 - 7 P.M Association Fall Calf Sale
Maryland Shorthorn to be held at the

PUBLIC SALE

of Agway New and Used Inventory
Motors, Pumps, Mowers,
Garden Supplies, Tires, Paints
& Stains, Milker Supplies,
Batteries and Many
Other Articles

Along Dillerville Rd., adjacent to
Nichols Store, Lancaster, PA.

SATURDAY, OCTOBER 17
At 10:00 A.M.

Watch next week's paper for full listing.

Terms by
AGWAY INC.

Auctioneers: J. Everett Kreider
and Steve Petersheim



PUBLIC AUCTION

OF 36.7 ACRE FARM

SATURDAY, OCTOBER 17, 1981

Sale Time 2:00 P.M.

Location: Take Route 272 North from Ephrata to Schoeneck Road, Take Schoeneck Road to Schoeneck, in Schoeneck turn left toward Mt. Airy to Girl Scout Road, Turn right onto Girl Scout Road to West Girl Scout Road, turn left to 1st farm on right. West Cocalico Township, Lancaster County, Penna.

36.7 ACRE FARM



2 1/2 STORY STONE DWELLING

With frame addition. Containing: Large eat-in kitchen with new built-in raised panel cabinets; living room with wall-to-wall carpet; family room; den; large very nice remodeled laundry with built-in cabinets and powder room; five bedrooms; full bath; closets. Attic storage. Basement. Veranda type porch.

41 x 46 2-STORY BANK BARN

With 3 garages and stables on first floor, 2nd floor storage.

28 x 31 TOBACCO SHED

Attached to barn with stripping room and dampening cellar.

24 x 48 2-STORY BLOCK CHICKEN HOUSE

20 x 30 CORN BARN

One half acre pond with feeding pond; stream; 200 AMP service; country estate type property; 2 wells with pressure system; lot of road frontage.

LAND: Approx. 17 acres farmland, balance woodland.

TERMS: 10% down day of Auction, balance at Final Settlement on or before December 10, 1981. Owner financing available to qualified buyers, contact owners or auctioneers for details.

OPEN HOUSE: Inspection at open house. Saturday, October 3 and Saturday, October 10 from 1:00 p.m. to 4:00 p.m. or by appointment call 717-626-5770.

All herein information is believed to be accurate, but is being used for advertising purposes only.

Auction by:

LYDIA JANE (HURST) MARTIN

717-626-5770

Gibbel and Kraybill Attorneys

Auction Conducted by:

John E. and Paul E. Martin, Auctioneers

717-733-3511 - 717-733-3305

Ephrata, Pa.

Note: Make plans now to inspect this fine farm

Frederick Fair Ground,
Frederick, Maryland
Purebred and Crossbred
Steers and Heifers Sale
Manager 717-359-7689

SAT. OCT. 17 - 10 A.M.
Public Sale of Real Estate
and Misc Located at Ben-
ton RD 1, off Rt. 487
north of Bloomsburg to
Rt 239 south, go 1/2 mile -
farm is on right Curtis E
Welliver, Sr. Estate
Autotore's Auctioneer

SAT OCT. 17 - 10 A.M.
Public Sale of 7 Acres of
Open and Wooded Land,
9 Bedroom Dwelling,
Household Goods.
Located along Rt. 25 be-
tween Sacramento and
Valley View in Hubley
Twp., Schuylkill Co., PA
Estate of S. Allen Smeltz
Deibert Auctioneer.

SAT. OCT. 17 - 10.30
Public Sale of Cattle.
Located from Frederick
MD, east on I-270, 10
miles to MD 209, south 5
miles to Barnsville, MD
turn left go 1 mile, right
onto Peach Tree Rd. first
lane on left. Al-Marsh
Farms, Owner. John D.
Downin, Auctioneer.

SAT. OCT. 17 and 24 - 9
A.M. Two day Public Sale.
Located approx. 30 miles
north of Harrisburg, PA,
midway between
Millersburg and
Elizabethville, along Rt.
209, near the village of
Rife. Leroy H. Landis
Estate. Lee D. Dockey,
Auctioneer.

SAT. OCT. 17 - 10 A.M.
Public Auction of Anti-
ques, Household Goods
and Farm Equipment
located along River Cor-
ner Road just south of
Conestoga. Follow New
Danville Pike from Lan-
caster to village of Con-
estoga Turn left at Post
Office onto River Corner
Road. Sale at second farm
on the right. Sale by Lloyd
S. Rankin Estate, Exec.
Mae Eckman, Ruth
Eckman and Janet
Rankin. John D Stauffer,
Auctioneer.

SAT. OCT. 17 - 9.30 A.M.
Public Sale of Real Estate,
Collectibles and Personal
Property. Located at 9614
Rowe Run Loop, Orr-
stown, PA., between Orr-
stown and Pinola. Janet
E. Shoop, Owner. Foust
and Martin, Auctioneers.

SAT. OCT. 17 - 12 Noon
Public Sale of Cattle.
Locator 2 miles west of
Kingsley, PA., 2 miles east
of Brooklyn, 11 miles east
of Montrose, PA., Sus-
quehanna Co. (Lenox exit
off Thruway 81 follow 106
to Kingsley, PA. Lloyd C.
and Effie A. Potter,
Owners. D.O. Rockwell
and Associates, Auc-
tioneers.

"SPECIAL" FEEDER SALES

FOR YOUR
CATTLE & PIGS

All weights and
breeds welcome.
These "special"
sales have been
well advertised.
Buyers will be
here. If you have
cattle to sell let us
know a week ahead
so we can advertise
them.

7:00 Sharp
Tuesday Evenings

At
WESTMINSTER
LIVESTOCK AUCTION

Schedule of "Specials"

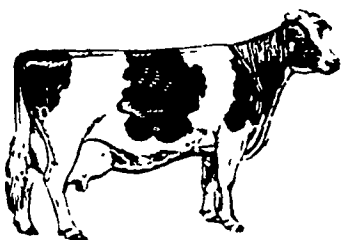
Oct. 6

Oct. 20

Nov. 3

For information or
a dependable
trucker call
Westminster (sale
days) 301-848-9820
or Hagerstown
(Home office) 301-
733-8120

Please clip and save



NEW HOLLAND SALES STABLES ANNUAL FALL HEIFER SPECIAL

800-1000 registered and grade heifers
All ages from small calves to fresh heifers

SATURDAY, OCTOBER 10
10 A.M.

Fresh heifers and all registered heifers will sell at 12 Noon. Special consignment from Truman Martin of Hagerstown, MD. 20 head of opened registered heifers out of dams with 16-19,000 milk. Sired by Gemini, Jet Stream, Char Sam Elevation Pasb and Ropies Chief Buff.

4 bred heifers consigned by J. Robert Metzler of Christiana, PA. A Gemini daughter her dam 87 points with over 20,000 of milk and 786 of fat. A Jet Stream daughter, her dam, good plus with 18,000 of milk and 672 of fat. A Marlu Titan daughter her dam 22,627 of milk and 754 fat. A Sterk Exclusive daughter, her dam classified very good with 20,859 of milk and 872 of fat. These 4 heifers are due late fall to Green Bank Diplomat. Also several fancy calves that are show age. Lots of grade heifers, all ages, Short bred and many close springers. All heifers tested for out-of-state shipment. Many calfhood vaccinated. Trucks and motels available.

Note to consignors: Please have registration papers, health charts and breeding information along with heifers Friday the day before the sale. Out of state buyers need credit reference.

For more information, contact Norm Kolb 717-397-5538 or Abe Diffenbach, Sales Barn office 717-354-4341.