

Public Sales Register

Closing Date - Monday, 5:00 P.M.
of each week's publication

SAT. OCT. 10 - Public Sale of acreage, house and garage. Located in Juniata County. Long Bros. Auctioneers.

SAT., OCT. 10 and 24 - 9:00 A.M. Public Sale of Antiques and Old Collectors Items. Located off Rte. 83 at Exit 14 (Yocumtown - between Harrisburg, PA and York, PA), go north on Rte. 392 to Yocumtown Rd., turn right 2 miles to sale on left. Blaine N. Rentzel, Auctioneers.

SAT. OCT. 10 - 11:00 A.M. Public Sale of Valuable Real Estate. Located one mile west of Ono along Rte. 22, East Hanover Twp., Lebanon County, PA Dale Rudy and Roger Myers, Auctioneers.

SAT. OCT. 10 1:00 P.M. Marvin L. & Susie L. Habegger. Located on 322 3 mi. east of Ephrata. 3 A. Farmette. Larmar Sensenig & Paul W. Horst Auctioneer.

SAT. OCT. 10 - 10 A.M. Public Sale of herfers New Holland Sales Stables.

SAT. OCT. 10 - 9 A.M. Public Sale of Valuable Farm Equipment, Antiques and Household Goods. Located between Felton and Winterstown near Lebanon Lutheran Church. North Hopewell Twp., York, Co., PA Reynold Burke, Auctioneer.

SAT. OCT. 10 - 12 Noon Public Sale of Farm Machinery and related items. Located 6 miles south of Richfield, Juniata Co. on the road from Richfield to Oriental, follow direction signs off Rt. 35 at Richfield and off Rt. 104. Elwood C. Flowers, Owner. 717-653-4839. Bryan D. Imes, Auctioneer.

SAT. OCT. 10 - Public Auction 10:00 A.M. Real Estate and Antiques Sale. Located 1807 Old Phila. Pike, Lancaster. 1/2 mile east at Bridgeport on Route 40. Anna M. Landis, owner. Ira Stoltzfus & Son & Jay Leary - Auctioneers.

SAT. OCT. 10 - 11:30 A.M. Public Sale of Cattle and Farm Machinery. Located Adams Co., PA. 15 miles west of York, 15 miles east of Gettysburg off Rt. 30, turn north on Canal Rd to St. Mary's Rd. turn left, 1/2 mile to farm Claude Grim Sons, Inc Clair Slaybaugh, Auctioneer.

SAT. OCT. 10 - 9 A.M. Public Sale of Antiques, Collectors Items, Farm Equipment and Personal Property. Located at RD 3, York, PA along Springwood Rd in York Twp. Eli Williams Estate. Jacob A. Gilbert, Auctioneer.

SAT. OCT. 10 - 1 P.M. Public Sale of Valuable Real Estate, 3 acre farmette. Located along Rt. 322 3 miles east of Ephrata, Lanc Co., PA. Terms by Marvin and Susie Habegger Lamar Sensenig and Paul Horst, Auctioneers.

SAT. OCT. 10 - 9 A.M. Public Sale of Real Estate, Farm Implements, Antiques and Household Items. Located along Rt. 401 7 miles east of Elverson, 1 mile west of Rt. 100 Terms by Irene Snyder, Lester Weaver and Barry Wanger, Auctioneers.

SAT. OCT. 10 - 12 Noon. Sale of 84 Hi Grade Holsteins with DHIA records. Located in Brookdale, PA, Rt 29, Susquehanna Co. Hallstead RFD. Lee Wilbur, owner. Bunnell and Weaver, Auctioneers 965-2375

SAT. OCT. 10 - 10 A.M. Public Sale of Airplane, Airplane Parts, Tools, Collectables and Corvair Located at Riverside Air-

port, Riverside, Danville on leg. route 49043 Sunbury Rd. Ken Burrows, Seller. John and John Jr. Autotore, Auctioneers.

SAT. OCT. 10 - 9 A.M. Public Sale of Tools Located off Rt. 183 near Reedsville Church. Off Rt. 443 at Gardner's Cafe near Friedensburg in Wayne Twp., Schuylkill County, PA. Sale by V. Sommers. Jay Riegel, Jr., Auctioneer.

SAT. OCT. 10 - 9 A.M. Public Sale of Valuable Real Estate, Carpenter Tools and Misc. Equipment. Located from Seven Valleys take Main St. to Cemetery Hill, approx. 3/4 mile to sale. From old Rt. 111 turn right at Krouts School House, turn right at first hard road towards Seven Valleys approx. 3 1/2 miles to sale. Wayne Rosenzweig, Owner. Ralph Breneman and Nelson Ahrens, Auctioneers.

SAT. OCT. 10 - 1 P.M. Public Sale of Feeder Calves Located at the N.W. Wise and Sons Farm, RD 3, Punksutawney, PA. Located off Rt. 410. 1 mile south of Troutville. Watch

for signs off Rt. 119 north of Big Run. M.W. Wise and Sons, owners. Clayton D. Winebark, Auctioneer.

SAT. OCT. 10 - 10 A.M. Public Sale of Arabian Horses, Buggies, Fancy Saddles, Antiques, Collectibles, and Guns. Located 1/2 mile west of Myersville, MD along Monument Rd., Frederick County, MD. Raymond C., Redifer,

Owner. Willowdale Auction Co.

SAT. OCT. 10 - 9:30 A.M. Public Sale of Trucks, Fork Lift, Garden Supplies and Equipment, Moped and Wheel Camper. Located at 1201 DeKalb Pike, Center Square, PA. McClure's Farm and Garden Center Inc. J. Kent Lenahan, Auctioneer.

DAIRY SHOW & SALE

At the Belleville Livestock Market, Inc.

WED., OCT. 7, 1981

Show at 9:30, Sale 12 Noon

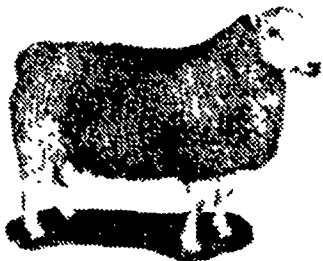
Cattle will be judged in 6 classes. Cash prizes, trophies and ribbons will be awarded. Cattle must be consigned by 5:00 P.M. day before sale for show.

If you are in need of production or looking for breeding stock, we are expecting a good selection of registered and grade Holsteins at this sale.

10 Good Brattleboro registered Red and Whites from one herd, An Ex 92- 5 yr. old Doreigh-Farms Admiral Matt, bred 1-17-81 to Elevation, An Ex 90 Juniper-Mist Ex Country Boy, making over 20,000 as a 4 yr. old, and other top consignments.

BELLEVILLE LIVESTOCK MARKET, INC.
717-935-2146

Mark Glick, Auctioneer



SHEEP FIELD DAY AND SALE

Sponsored by Wyoming County Sheep and Wool Growers Association

SAT. OCTOBER 10

At 10 A.M.

At Hillside Farms, Trucksville, PA (near Wilkes-Barre) 1 mile from Unclaimed Freight Co. on the Trucksville to Huntsville Dam Rd.

50 head of sheep to be sold including 8 registered Dorset ewes, 6 registered Hampshire ewes, 12 ewes with lambs at side, 3 black sheep, several registered rams, and several yearling grade ewes.

For more information phone:
717-563-2589
or 333-4251

FARM MACHINERY AND RELATED ITEMS AT

PUBLIC SALE

SATURDAY, OCTOBER 10

12:00 Noon

Located 6 miles south of Richfield, Juniata Co., on road from Richfield to Oriental. Follow direction signs off Rt. 35 at Richfield and off Rt. 104.

TRACTORS & MACHINERY

J.D. 4020 diesel, fully equipped; Farmall 460 gas, fully equipped; Farmall M w/power steering w/NI #305-2 row mounted corn picker; Farmall H; Farmall C w/cultivators; Note - all tractors in good condition; J.D. 3-16 plows, 3 pt.; Ferguson 2-14 plows, 3 pt.; Oliver 2 bottom, trail plow; Oliver 3 bottom, 3 pt. plow; I.H. 7 tooth chisel plow; pull type; 5 tooth chisel plow, 3 pt.; J.D. 14' spring harrow; J.D. 9' spring harrow; J.D. 10' disc, pull type; J.D. 10' wheel disc; Ferguson 4 row cultivator, 3 pt.; J.D. 10' field cultivator, 3 pt.; Ford 2 row cultivator, 3 pt.; Cultivators to fit Farmall H or M; M.F. #82 self-propelled combine; N.I. #324 2 row corn picker, pull type; N.H. #717 1 row harvester; A.C. #780, 2 row harvester w/grass pick up head; I.H. #350 1 row harvester; Gehl 14' forage wagon w/10 ton running gear; Lamco 14' forage wagon w/8 ton running gear; Fox silage blower; 16' flat bed wagon; 2 gravity bins w/running gears; J.D. #483 9' haybine; N.I. #270 flail conditioner; N.I. roto-bar rake; Ford #530 baler w/thrower; N.H. #65 baler w/thrower; A.C. #60 combine, w/bin; #67 combine w/bin; Ontario 16 disc grain drill; I.H. 10' lime drill w/grass seed attachment; Ford #309 corn planter, 3 pt.; Int. 2 row corn planter; 3 pt. hitch attachment for fast hitch I.H.; 1 pair J.D. insecticide boxes for corn planter; N.I. #17 manure spreaders; Sauder front end loader w/6' bucket, will fit any utility tractor; 2 new, 3 pt. fertilizer spreaders; 2 new 6', 3 pt. scraper blades; 2 new 3 pt. lift booms.

PLEASE NOTE - Possibly other pcs. of machinery that are not listed at this time.

LAWN & GARDEN TRACTORS & GENERAL LINE OF FARM RELATED ITEMS

Massey Ferguson 7 - 7 h.p. gear driven w/mower; Massey Ferguson 7 - 7 h.p. hydrostatic w/mower; J.D. 110 w/mower, snow blade and snow blower; 2 sets steel ladder for silo; Winnebago slide in camper for pickup w/stove & refrigerator; steel barrels; lot of misc. farm items such as machinery parts, nuts, bolts & other items.

GUNS

Winchester Model 12-16 ga. pump shotgun w/ventilated rib; Winchester Model 94 30-30 rifle; 2 single barrel 12 ga.; single shot 22 rifle; other misc. guns.

Owner, Auctioneer Not Responsible For Accidents - Terms: Cash or Good Check

ELWOOD C. FLOWERS

Owner
Ph. 717-653-4839

Lyter & Son, Clerks
Bryan D. Imes, Auctioneer
Lunch



GAP AUCTION

FRIDAY EVE., OCT. 9

5:30 P.M.

Located off Route 41 - Lancaster Avenue Opposite Turkey Hill Minit Market - Cross RR Bridge.

ANTIQUES AND HOUSEHOLD GOODS
SOLD AT EVERY AUCTION

CONSIGNMENTS ON MONDAYS
FROM 8:00 A.M. to 7:00 P.M.
OTHER DAYS BY APPOINTMENT

Call us for pick-up service

IRA STOLTZFUS & SON, Auctioneers

442-4936 or 442-8254

CONDUCTORS ALL TYPES PUBLIC SALES

PUBLIC SALE

SATURDAY, OCTOBER 10

at 9:00 A.M.

Valuable Farm Equipment
& Antiques & Household Goods

Of the late
Mrs. Stanley J. Lentz
of Red Lion 3, Penna.

Located between Felton and Winterstown -near Lebanon Lutheran Church. North Hopewell Twp., York Co., Penna. Watch for sale signs.

Farm Equipment

Ford 641 Work Master tractor - fair tires - 2000 hrs., J.D. 12A combine w/bin & motor, J.D. 12 disc grain drill, Ontario 13 hoe drill, 9' cultipacker, 2 - 3 section spring harrows, disc harrow, Oliver 70 cultivators, Ford 3 p.h. cultivator, Ford 7' 3 p.h. mower, Ford 14' 2 bottom plow, 3 p.h. corn planter, fertilizer spreader, Massey Ferguson 5' roto mower, Grove 6' scraper blade, 14' rubber tire wagon, David Bradley side delivery rake, dump rake, hay tedder, weed sprayer, seed cleaner, 3 p.h. boom lift, 3 p.h. scoop, one horse cultivator, 2 wheel trailer, 2 stone sleds, shovel plow, Oliver 70 steel wheels, Oliver 70 wheel, tractor umbrella, 2 pr. 11-28 tractor chains, Ford tractor jack, Barber tractor seeder, potato bags, scrap iron.

Bonanza riding mower, David Bradley garden tractor w/cultivators, E.B. hit & mis gas engine, port. air compressor, Wright 18' chain saw, 1 metal & 2 wood gates 12' long, large & small butcher kettles & 3 foot, roll of 1 1/4" plastic pipe, fence stretcher, weed burner, 22 barrels, metal shelf, 5/8" log chain, vice, bench grinder, wood lathe, power saws, grinding stone, broken anvil, elec. motors, wood & metal wheel barrows, elec. mower, reel mower, Wards grass catcher, lawn roller, garden seeder, hand & garden tools, 30' & 20' alum. ladders, 28' wood ladder, step ladder, 100' sewer tape, lots of copper wire, scythe, sleigh, wood canoe, horse shoes, lumber, fire wood, 2 chunk stoves, 275 gal. gas tank, hand pump, horse saddle, tires.

Antiques & Household Goods

Oak drop leaf table, oak table w/4 chairs, oak rocker, 10 pc. oak diningroom table w/5 chairs - 1 captain chair - server - china closet & buffet, high back double bed, wash stand, cedar chest, large antique mirror, shoe lathe.

Frid. double door - frost free refrigerator, Kenmore 40" elec. stove, Sears auto. washer & elec. dryer, Kenmore cabinet model elec. sewing machine, 2 pc. livingroom suit, 2 sofa beds, 2 stuff chairs, end & coffee tables, floor & table lights, single & double wood beds, iron bed, mattresses, dresser w/mirror, 2 clothes closets, night stands, York air conditioner, Everhart Bros. upright piano w/bench, cabinet model stereo AM FM radio record player, records, radios, typing stand, desk, magazine racks, wooden benches, 6 wood folding chairs, lawn chairs, World Book encyclopedias w/year books, books, perfection stove, Christmas decorations, sweepers, blankets, quilts, throw rugs, new rug, table clothes & dollies, jars, lots of dishes, pots & pans and lots of misc. items. Not responsible for accidents. Refreshments by St. Paul (Lebanon) Lutheran Church.

Terms: CASH or APPROVED CHECK.

ORDER OF SALE: Wagon items, farm machinery & household goods.

Executor,
NORMA J. EMENHEISER
Ph. 755-5509

Reynold Burke, Auct.
Dean Burke, Clerk