

Sale Reports

A milking herd dispersal was held September 26 by Gladys Dunlap on Craige Hill Rd., 5 miles north of Meshoppen.

The average of the 30 cow herd of grade Holsteins was \$1,020. The top price paid was \$1,500, the second high cow was \$1,360 and the third high was \$1,310.

Merton L. Bunnell was the auctioneer & sale manager.

A public sale of real estate and household goods and antiques was held Sept. 26 by Susan B. Fahnestock and Nora B. Grube, along Newport Road, Penryn, Lanc. Co.

The one tract of land contained 2 two-story homes and was sold for \$27,600 to Daniel G. Haldeman, R3, Manheim.

The second tract contained a 2½ story house and a storage barn and was sold for \$24,000 to Chanda L. Galebach, R4, Manheim.

Other items sold were: 1850 woolen coverlet \$470, lowboy \$495, 10-pc. dining room suite \$470, Temperance tree quilt \$620, other quilts \$230, \$290 & \$325, 5 pc. parlor set \$335, chests \$220, \$270 & \$280, Tiffany-like lamp \$320, kerosene lamp \$140, antique Gaudy water pitcher \$155, iron bulldog \$72.50, small egg basket \$75 and reed fern \$110.

Auctioneers were T.

Glenn Horst & Timothy G. Horst.

A public auction of real estate was held Sept. 26 by Earl and Elsie Seats, 6 miles

south of Quarryville along Rt. 222 in Lanc. Co.

The 2.879 acres with a 1 story house of concrete block w/white cement coating was sold for \$35,100.

Auction conducted by Kreider & Kline auctioneers.

PUBLIC SALE
OF REAL ESTATE, ANTIQUES AND HOUSEHOLD GOODS, GUNS
Stevens
THURS. EVE., OCTOBER 8, 1981
At 4:30 P.M.
Real Estate at 7 P.M.
Located along Main St., Stevens, Pa.

ANTIQUES & HOUSEHOLD GOODS

Oak Roll Top Desk (drawer 2 sides); Oak Library Table; Oak Sideboard; Oak Wash Stands; Oak Parlor Tables; Oak Pressed Back Office Chair; Oak Chairs; Dressers; Oak High Chair; Oak Extension Table; Wood Chest; Oak Kitchen Cabinet; 2 Dove Tailed Blanket Chests; 2 Rope Beds; Brass Double Bed; ½ doz. Fiddleback Kitchen Chairs; Victor Table Top Victrola (Oak); Cradle; Wardrobe; Filing Cabinets; Spool Table; Love Feast Bench; Cane Seat Rocker and 4 Cane Seat Chairs; Gingerbread Mantel Clock; 2 Shelf Clocks; Antique Clock in Shadow Box; Treadle Sewing Machine; many Gold Leaf and other Antique Picture Frames; Trunk; crib; Small Chest; Smoking Stand; many Antique Rocking and Straight Chairs; many Benches; Slant Top Desk; 15 cu. ft. G.E. Refrigerator and Freezer.

Crocks; Jugs; STONEWARE JUGS WITH BLUE MARKINGS H.W. BARD; DENVER JUG; Avon Bottles & Plates.

CHINA & GLASSWARE - Shot Glasses; Depression Glass; Pressed and Cut Glass; Large Bowls; Compotes; Cake Plates; Cream & Sugars; Ironstone Plates and Planters; Iron Fry Pans; Colelction Fire Co. Plates; Mugs; Water Sets, Etc.; Church Plates; Collection of Pens & Pencils; Kerosene Lights.

TRAINS, TOYS AND BANKS - DOLLS

LIONEL STANDARD GAUGE Engine #392E and Tender; AMERICAN FLYER STANDARD GAUGE Engine #4635; American Flyer U.S. Railway Post Office #4040; American Flyer Standard Gauge Passenger Car; Antique Mechanical Bank (Man Sitting on Chair); 2 Reproduction Mechanical Banks; other Iron Banks; Ink Wells; Old Wooden Blocks; many Marbles; Lincoln Logs; Erector Set; Children's Books; French Bisque Fashion Doll (original hair); Joiner Bisque Head Doll (Germany); other Misc. Dolls; Rocking Horse; Child Cut Glass Tea Set; Old Post Cards; Name Cards; Advertising Cards; Almanac; Old Books; Brethren History; Song & Church Books; Photo Albums; Tin Types; Ice Tongs; Apple Peelers; Brass Kettle; Butcher Tools; ideal Cocoa and other Tin Boxes; many Wooden Advertising Boxes; Pudding Strainers; Wooden Handle Knives and Forks; Coal Buckets; Small Brass Bells; Flat Irons; Balance Scales; Coffee Grinder; "J.G. Leber" Ephrata Bottle; Antique Nursing Bottles; other Old Bottles; Agateware; many Avon Bottles; Silverware; many Buttons; Sewing Items; Sewing Baskets; Linens.

TOOLS

Tractor with Disc, Cultivator and Snow Plow; Vise (large & small); ½ Electric Drill; Electric Saw; Electric Fogger; Electric Bug Killer; Hand Saws & Drills; Ax; Carpenter Tools; Garden Tools; Scythes; Flailing Sticks; lot of Paints; Extension and Stepladders; many Bicycles and Parts; Sleds; Fish Aquariums and Accessories.

GUNS

Harrington and Richardson 12 Ga. Shotgun; Winchester Model 57 .22 Rifle; 12 Gauge Shotgun; Hammer Shotgun; Pistol; Pocket knives; Key Wind Bulls Eye Pocket-watch and other Watches; Gold Teeth & Eye Glasses.

COINS - 1904 Silver Dollar; Silver Halves and Quarters; Approx. 400 Wheat Pennies. Many items still in boxes when sale was listed. Come and see what we found.

Terms by:
RUTH F. KELLER
(Mrs. Jacob Keller)

T. Glenn Horst, Auct.
Timothy G. Horst, Auct.
859-1331
Charles V. Snyder, Atty.

1981 FEEDER CATTLE & CALF SALES

SOUTH BRANCH STOCKYARDS, INC.,
MOOREFIELD, W. VA.
Phones: (304)538-6055 —
538-6600 — 257-1054

FRI., OCT. 16: Graded Calf Sale (No horns or bulls) (1200 head)

FRI., OCT. 30: Clean-Up Sale...all kinds of cattle (1000 head)

ALL SALES START AT 7:30 P.M.
NUMBER OF HEAD ESTIMATED

PUBLIC AUCTION OF 38 ACRE FARM FARM MACHINERY - ANTIQUES PERSONAL PROPERTY SATURDAY, OCTOBER 17, 1981 At 11 A.M.

Real Estate at 1 P.M.
Located on Narvon Rd., Salisbury Twp., Lancaster Co., Pa. From intersection of Rts. 340 & 897, take 897 north to Meadville Rd. & turn right. Follow Meadville Rd. to Narvon Rd. & turn left. Sale at second farm on right. From intersection of Rts. 322 & 897, take 897 south to Gault Rd. & turn left. Follow Gault Rd. to Narvon Rd., turn right & proceed to second farm on left.

REAL ESTATE

Farm consists of approximately 38 acres with 35 ac. tillable. Buildings include a nice 4 bedroom stucco rancher with full bath, living room, eat-in kitchen, hardwood flooring, lots of closet space, good well, oil fired hot air heat, full basement with outside entrance, and a 32' x 60' frame barn with damp room, stripping room and stables.

FARM MACHINERY

A.C. D12 TRACTOR with Plow & Cultivators; FARMALL SUPER A TRACTOR, Hydraulics, with Plow & Cultivators; 2 Farm Trailers; Water Tank; 2 Row Tobacco Planter; A.C. Sickle Bar Mower; Harrow; Disc; David Bradley Manure Spreader; A.C. Wheelweights; Potato Plow; Tobacco Bale Box; Tobacco Shears; HOG TROUGHS; Scalding Trough; approx. 4000 Tabcco Laths; Straw Knife.

ANTIQUES - PERSONAL PROPERTY

Gibson Refrigerator; Magic Chef Gas Range; Low Dry Sink with Drawer; OAK PRINCESS DRESSER; OAK ROCKER; ROPE BED; 2 - 3 pc. Lined Oak Bedroom Suites; Double Bed; 3 pc. Living Room Suite; 2 pc. Living Room Suite; Platform Rocker; Stainless Steel Wringer Washer; Twin Tubs; Dresser; Chest Drawers; Crib; Play Pen; Breakfast Set with 8 Chairs; CAMEL BACK TRUNK; Commode; Lard Presses; Iron Ladle; Strainer & Fork; Meat Bench; Meat Grinder; FATSO STOVE; End Tables; Lamps; Crocks; Hand Tools; Few Garden Tools; CrossCut Saw; Pea & Beam Scales; Work Bench.

Inspection: Sept. 5 & 12, 1981 from 1-4 PM or by appointment. Call 354-5742 or 354-5994.

Terms: 10% down day of auction; balance at settlement.

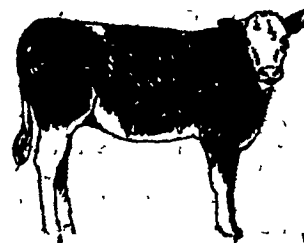
Sale by
S. MARIE MOORE
Wife of Gib Moore
(P.O.A., Doris Witmer)

Attorney: May & May
Auctioneers:
Ira Stoltzfus & Son 442-4936
or 442-8254
Jay Leary 354-0423

Not Responsible For Accidents
"List Your Sale Today - With Ira, Dale, or Jay"
Food by White Horse Fire Co. Ladies Aux.
Clip & Save

SHENANDOAH VALLEY LIVESTOCK SALES

SPECIAL YEARLING STEER SALE
WEDNESDAY, OCTOBER 14, 1981
Time 10:00 A.M.



YEARLING STEER SALE
STATE GRADED
All Cattle - Beef Breeds
Dehorned
Weigh 500-1000

Shenandoah Valley Livestock Sales, Inc.
1044 Edom Road
Harrisonburg, Virginia 22801
Phone (703) 434-4482

AUTOTORE'S AUCTION

SATURDAY, OCTOBER 17, 1981

Benton R.D. 1, off Route 487 North of Bloomsburg to Route 239 South - Go ½ mile - Farm is on Right Follow Auction Signs. Selling Real Estate & farm related items of the late Curtis E. Welliver, Sr.

10 A.M. Sharp

J.D. (B) Tractor w/mounted cultivators; J.D. (MT) Tractor w/mounted cultivators; Cub Cadet 147 w/mower, snow blower, two wheel wagon; Lime Spreader & Cultivators for Cub Cadet; J.D. Hay Rake; Ontario 10 hole drill; Ford bush hog; 8' Double row disc; Iron wheel mower; Combine w/6 cyl. engine; Fertilizer spreader; 2 Row Duster; 3 & 4 Section Harrows; 2 Row Corn Planter; 2 Row Potato Planter; 1 & 2 Row Potato Digger; Potato grader; Wooden Potato esculators; Barrel Field Sprayer; Wood 300 Gallon Field Sprayer; Walking plow; Fanning mill; Push grass catcher; Power push mower; Lime spreader type 1A; Pill broadcaster seeder; Lowe 16' Alum. Boat & Trailer; 9.9 Evinrude Motor; Extra Gas tanks; Tow Chains; Extra Boat related items; Coleman Ice Chests; Old Batteries; Scrap Iron; Small Pot-belly stove; 1970 Buick Electra 4 dr. sedan; 1972 Fleetwood 4 dr. sedan; Old Drums; Extra Trailer wheels; Hand Tools; Straw (?); ½ hp. Black & Decker Drill; Par Gas bottle; NEW ELECTRIC BASEBOARD HEAT (still in boxes); 1913 Winchester 20 gauge pump (full choke); 1912 Winchester 12 gauge w/variable choke (semi-auto); Double barrel 12 gauge hammer shotgun; plus many unlisted items.

REAL ESTATE to be offered at 11:30 a.m.

Approx. 83 acres of land located in Benton Borough and Benton Township on both sides (east & west) of Route 239. Approx. 78.5 acres are in Benton Township with 33 of woodland, 40 tillable, & 10 pasture.

A 2 story brick and vinyl siding dwelling offering large kitchen, office, master bedroom, utility, living and family rooms, and 1½ baths on first floor. Second story has 5 bedrooms and 2 baths. Carpeting and composition throughout, built in double Micro-wave ovens, icemaker, compactor, dishwasher. Home is equipped with central vacuum and window air conditioners. Heating system is baseboard electric with Gas furnace and Oil Hot Air as back-up units. 400 amp electric service with two 200 amp back-up units. Well water and septic system. Large barn in good state of repair and large metal equipment shed. Home must be seen to be appreciated.

PREVIEW DATES TO SEE PROPERTY ARE OCTOBER 4 & 11 FROM 1 P.M. to 4 P.M.

TERMS: Personal Property - CASH
Real Estate - \$15,000 down day of auction, balance in 30 days. Buyer pays all transfer taxes.

Statements made day of auction take precedences over any previously written material.

Seller - Executor: **B.B.C.T.**

Auctioneers:
John Autotore, 784-3506
John, Jr. 784-0381



STRIKE IT RICH!

SELL IT WITH A

LANCASTER FARMING CLASSIFIED

