

Lancaster Co. DHIA

(Continued from Page D10)

68 King	RH	5-8	305	19,837	4.1	807
228 Madg	RH	3-1	305	19,745	3.8	757
181 Fur	GrH	1-11	305	18,330	4.1	747
Ray P. Bollinger						
Sally	GrH	3-8	305	18,208	4.8	873
J. Wilmer Eby						
Helen	GrH	3-8	305	21,135	4.1	868
Tammy	RH	5-1	305	16,376	5.2	844
Anne	RH	4-6	305	17,883	4.7	834
Dama	RH	6-9	290	20,034	3.9	776
Della	RH	3-6	305	19,442	3.8	744
John M. Harnish						
Peggy	RH	3-5	305	22,917	3.8	867
Friend	RH	3-3	305	26,430	3.1	810

Linda	RH	6-3	305	22,642	3.4	775
Sadie	RH	3-2	305	21,110	3.6	761
Marietta	RH	3-6	305	18,564	4.0	749
Benuel Z. Lapp						
Judy	RH	3-11	305	23,088	3.8	866
James W. Bowman						
Darlene	GrH	6-8	305	24,865	3.5	864
Barbie	GrH	5-2	305	22,601	3.8	857
David S. Stoltzfus						
Polly	RH	6-11	305	23,194	3.7	863
Glenn F. Shenk						
Amy	GrH	5-0	305	22,496	3.8	863
Welsh-Vista Farms						
Gretchn	RH	6-2	305	19,396	4.4	862
Lu Lu	RH	5-9	305	22,757	3.3	747
Marvin S. Nolt						
104	RH	4-11	305	21,338	4.0	859
134	GrH	4-4	305	20,930	3.9	815

Lancaster Farming, Saturday, October 3, 1981—D11

Hiram S. Aungst						
Vy	RH	6-0	305	22,104	3.9	857
Mickey	Rh	6-10	305	23,173	3.7	849
Bush	RH	4-11	305	22,365	3.3	741
John E. Glick						
Mary	GrH	6-2	305	19,718	4.3	856
Milky Way Farm						
Judy	GrH	5-11	305	22,053	3.9	852
Freema	GrH	8-0	305	18,713	4.2	780
Naaman W. Stoltzfus						
Tanya	RH	5-6	305	21,961	3.9	850
Vernon R. Umble & Son						
Leona	RH	5-0	305	23,858	3.6	849
Pauline	RH	3-3	304	19,952	3.9	777
Kay	RH	6-6	305	17,411	4.4	765

(Turn to Page D12)

no finance charges for 11 months

Buy one of our new Case farm tractors now . . . finance it through J I Case Credit Corporation . . . and finance charges will be waived for eleven (11) months from date of purchase.

OR choose a Case cash rebate . . .

If you would rather have a cash rebate and you buy any of our new Case farm tractors listed on the chart . . . Case will send you a check for the dollar amount shown on the chart for the model you buy. Rebate may be applied toward your down payment. NOTE: Government Agencies/Departments do not qualify for rebates.

Eligible Model	Cash Rebate
1190, 1290, 1390, 1490, 1690	\$1700
2090, 2290	\$3500
2390, 2590	\$4500
4490, 4690, 4890	\$7000

Waiver of finance charges on used farm tractors.

Buy one of our used farm tractors, any make . . . finance it through J I Case Credit Corporation . . . and finance charges will be waived date of purchase until March 1, 1982.

Offers valid September 1 thru October 31, 1981.



Rear wheel steering

Front wheel steering

4-wheel crab steering

4-wheel coordinated steering



**Before You Buy or Lease...
Check With the
Tractor Specialists!**



Exclusive SOLID STATE 4-Way Steering

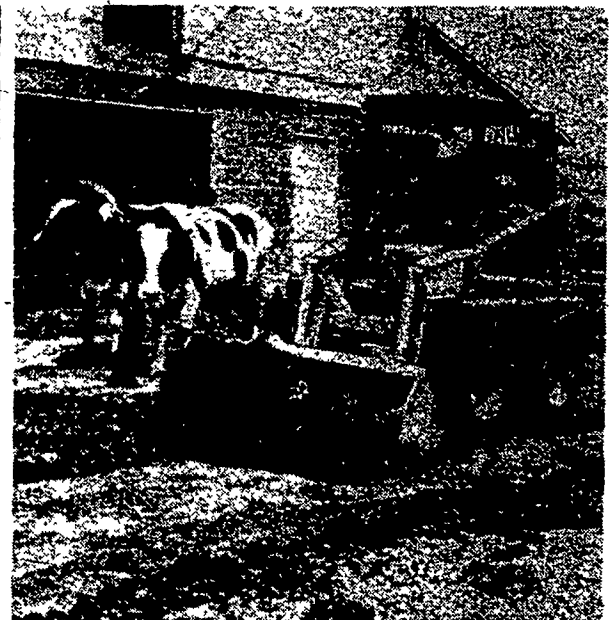
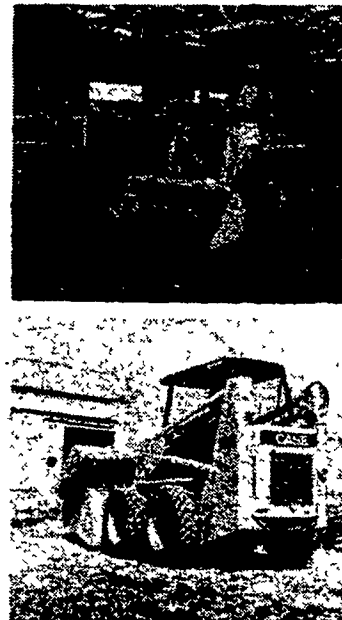
Flick...Flick...Flick! As easily as you'd operate a light switch you can switch on-the-go from front to rear to coordinated to crab steering. When you switch to front steer, rear wheels center automatically.

Uni-Loader . . . for power-in-hand command

Uni-Loader design eliminates pedal controls. Helps dairymen get their scraping, lifting, dumping and other backbreaking chores done faster and easier, without unnecessary "steps" to coordinate foot and hand movements. Two hand levers control everything — power, speed, direction, loader and bucket functions.

Other productive advantages include hydrostatic 4-wheel drive for smooth going with infinitely variable control. 360° turn capability for getting in and out of pens, out-buildings and other tight spots with ease. Quick parts and service — with dealer access to the Case nationwide network of computer-linked parts depots.

See your nearby Case dealer for the Uni-Loader to suit your needs. Available in 16, 30 and 45 hp models with lift capacities up to 1700 lbs.



STOFFER BROS., INC.
1066 Lincoln Way West
Chambersburg, PA
(717) 263-8424



See Your Local Case Specialist!

PEOPLES SALES & SERVICE
Oakland Mills, PA
(717) 463-2735

ZIMMERMAN'S FARM SERVICE
Bethel, PA
(717) 933-4114

C. H. WALTZ SONS, INC.
RD1,
Cogan Station, PA
(717) 435-2921

C. & P. FULTZ EQUIP.
RD 1,
Spring Mills, PA
(814) 422-8805

T & T SUPPLY, INC.
RD5, Danville, PA
(717) 275-0927
2 mi. S. off Rte. 54

PAUL SHOVER'S, INC.
35 East Willow St.
Carlisle, PA
(717) 243-2686

E. W. BILEWICZ EQUIP., INC.
Elmer Rd.,
Richwood, NJ
(609) 881-2692

BINKLEY & HURST BROS.
133 Rothsville Station Rd.
Lititz, PA
(717) 626-4705

A. L. HERR & BRO.
312 Park Ave.
Quarryville, PA
(717) 786-3521