



Lancaster County DHIA Monthly Report

August 1981

A Registered Holstein cow owned by Christian Zook, R. #2, Gap, completed the highest 305 day lactation. Dixie produced 26,976 lbs. of milk, 1,048 lbs. of butterfat with a 3.9% test. Second high lactation was completed by a Registered Holstein cow owned by Vern-Lee Holsteins, R. #2, Denver. Glory produced 21,731 lbs. of milk, 1,038 lbs. of butterfat with a 4.8% test in 305 days.

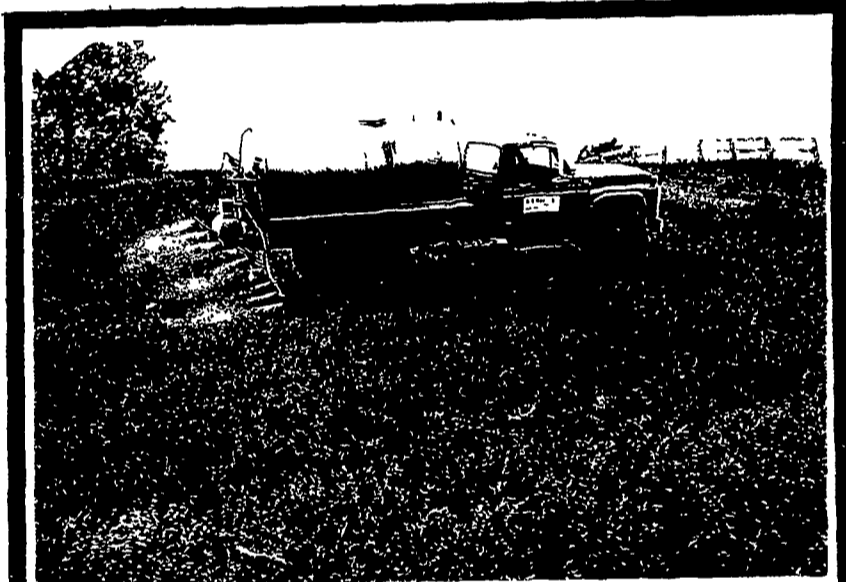
The herd of Vern-Lee Holsteins, R. #2, Denver, had the highest daily butterfat average. This herd of 45.7 Registered Holstein cows averaged 63.8 lbs. of milk, 2.33 lbs. of butterfat with a 3.7% test. The herd of Harlan W. Hoover, R. #1, Ephrata, placed second. This herd of 29.0 Holstein cows averaged 59.7 lbs. of milk, 2.21B lbs. of butterfat with a 3.7% test.

OWNER NAME OR NUMBER	BRD	AGE	DAYS IN MILK	LBS. MILK	% FAT	LBS. FAT
Christian Zook						
Dixie	RH	5-0	305	26,976	3.9	1048
Windy	RH	2-9	275	21,835	3.9	847
Vern-Lee Holsteins						
Glory	RH	8-4	305	21,731	4.8	1038
Princes	RH	3-7	305	21,178	3.5	733
Janice	RH	3-7	305	17,480	4.2	730
Sunny Craft Farm						
Mandy	RH	5-2	305	26,297	3.9	1034
Dan S. Stoltzfus						
Bes 114	GrH	6-8	305	26,132	4.0	1034
Haps 36	RH	4-10	305	20,427	4.3	887
Nelson H. Wenger						
Wilma	RH	6-1	305	22,606	4.5	1027
Faith	RH	3-9	305	20,081	4.9	980
Rebecca	RH	5-1	305	20,340	4.1	827

Popcorn	RH	4-10	305	25,779	3.0	786
Vodka	RH	2-3	305	16,376	4.6	754
Harlan W. Hoover						
27	GrH	4-11	299	25,731	3.9	1003
14	GrH	3-11	305	23,033	3.3	771
Amos F. Miller						
Star	GrH	6-11	305	27,499	3.6	993
Joanna	GrH	6-2	297	16,123	4.5	732
Earl R. Hursh						
Elenor	RH	6-4	305	27,085	3.6	964
Melissa	RH	3-6	305	21,026	3.6	755
Richard N. Sauder						
Milly	RH	3-1	305	20,835	4.6	949
Apple	RH	4-1	305	24,827	3.5	880
Teresa	RH	6-2	302	20,282	4.0	820
Amos B. Lantz						
Trisha	RH	6-0	305	22,833	4.1	940
Connie	RH	4-2	305	22,575	3.4	778
John S. Zimmerman						
18	RH	6-2	302	19,817	4.7	939
37	GrH	3-7	305	20,607	3.8	787
51	GrH	3-1	305	23,057	3.4	779
4	RH	4-3	305	19,966	3.8	750
Curtis E. Akers						
Bert	RH	5-2	297	25,296	3.7	937
Joyce	RH	4-10	305	25,185	3.4	857
Laura	RH	7-4	305	20,413	3.9	790
Pearl	RH	6-0	305	19,696	3.9	767
Ivan Zook						
13	GrH	5-6	305	24,396	3.8	933
Parke H. Ranck						
Posey	RH	8-0	305	22,609	4.1	933
Betty	RH	3-8	305	16,750	4.5	750
Samuel M. Martin Jr						
Trix	GrH	4-2	305	23,665	3.9	932
Granny	GrH	4-6	305	25,677	3.5	903
Speckle	GrH	4-4	305	25,307	3.4	852
Sheryl	GrH	4-11	305	21,978	3.7	820
Denny	GrH	9-2	305	20,693	3.7	765
Freida	GrH	8-10	305	20,896	3.6	760
Hula	GrH	5-3	304	21,006	3.6	757
J Carl Zander						
Penelop	GrH	6-0	305	21,943	4.2	930
Cndt	RH	5-0	305	19,431	4.1	795
Paulete	RH	7-4	305	20,287	3.6	733
Edgefield Farms						
Milkway	RH	6-4	305	22,736	4.1	929
Maybell	RH	4-7	305	24,210	3.3	787
Kathy	RH	6-5	305	21,579	3.5	749

Paul H. Martn						
Daisy	RH	4-4	305	27,366	3.4	925
Jody	RH	3-1	305	21,239	3.9	827
John K. Peters						
Melinda	RH	5-2	305	24,060	3.8	922
Allen Lee Stoltzfus						
Jet	RH	4-3	291	27,092	3.4	917
Fanny	RH	6-0	305	22,803	3.9	894
Dorothy	RH	4-2	305	21,895	3.5	761
Abram M. Stoltzfus						
Edna	RH	4-4	305	22,819	4.0	910
Pearl	Rh	6-6	305	18,843	4.3	812
John Omar Stoltzfus						
Pride	RH	6-2	305	18,706	4.8	903
Windy	RH	5-1	305	23,201	3.8	879
Elam B. Rutt						
Lucinda	RH	6-2	305	21,988	4.1	897
Anita	RH	3-6	305	21,310	3.9	821
Kim	RH	5-11	305	18,936	4.2	799
Baby	RH	4-3	273	19,901	4.0	787
Ru Be Mar Farms						
13	RH	4-7	305	21,747	4.1	891
J. Scott Wolf						
T. Tilda	RG	4-10	305	19,568	4.6	891
C. Witmer Sherer						
Rosie	RH	6-8	305	21,480	4.1	889
Ellis D. Kreider						
127	GrH	4-10	305	20,499	4.3	888
142	GrH	3-7	305	19,542	4.2	820
128	GrH	4-7	305	22,432	3.5	793
92	GrH	7-6	305	20,155	3.7	736
Robert W. Ulrich Jr.						
Babe	RJ	4-8	305	16,492	5.4	886
Lina 71	RJ	4-3	305	13,002	5.7	738
Glenn R. Binkley						
251	RH	5-3	305	24,405	3.6	884
210	RH	4-1	305	23,283	3.6	845
60	RH	10-2	305	19,962	4.2	829
202	GrH	4-0	305	15,252	4.9	752
Mervin Sauder						
Trixie	GrH	8-9	305	20,663	4.3	881
Bleu	RH	8-0	305	21,035	3.8	790
Paul S. Horning						
Bridget	RH	4-1	305	25,059	3.5	880
Irma	RH	4-7	305	25,050	2.9	737
Lorie	RH	4-6	305	20,913	3.5	735
Pequea Meadows Farm						
145 Jnda	RH	5-0	305	28,077	3.1	874
211 Tifn	Rh	3-5	282	25,756	3.3	839

(Turn to Page D11)



ARCADIAN® liquid gives a profitable boost to increase crop yields.

Arcadian liquid makes it easy. Made the SLF® way. Arcadian liquid gives you uniform distribution of fertilizer ingredients from start to finish. It's truly the efficient way to turn alfalfa into green gold.

Fortified With A New Combination of Power-Packed Ingredients!



- Grain Distillers Solubles
- Ammonium Polyphosphate
- Condensed Fermented Corn Extractive

ARCADIAN GOLDEN URAN 30%, Poly-N 10-34-0, Wholesale & Retail

— ALSO —

Lime Sales & Spreading plus retail insecticides & Herbicides
Call Us For Your Chemical Needs.

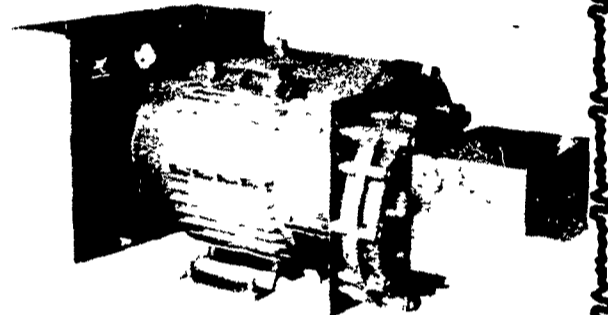
MARTIN'S AG SERVICE

c/o JOHN Z. MARTIN
RD 1, Box 716, New Holland, PA 17557
Phone: 717-354-4996 or 717-354-5848

Progress is important, but a new tractor does not make your MAXI-POWER PTO generator obsolete because of a different speed of a PTO shaft. All MAXI-POWER PTO's have interchangeable gearboxes. Gearboxes are carried in stock and can be installed in minutes by our servicemen, and at a very low price.

Call us today for a generator to keep pace with your farm's growth. Whether PTO speed is 540 or 1000, MAXI-POWER is the only generator for you.

MAXI-POWER... a customer service oriented company.



MAXI-POWER GENERATOR SYSTEMS

330 Fonderwhite Road, Lebanon, PA 17042

PH: 717-274-1483

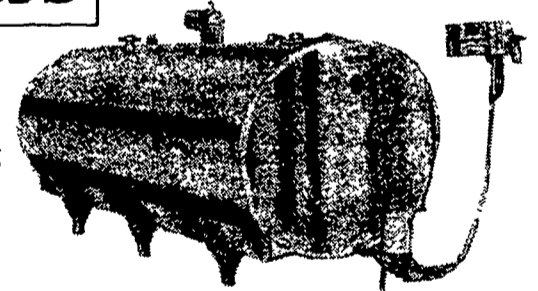
Division of Leonard Martin Company

MUELLER Bulk Milk Coolers

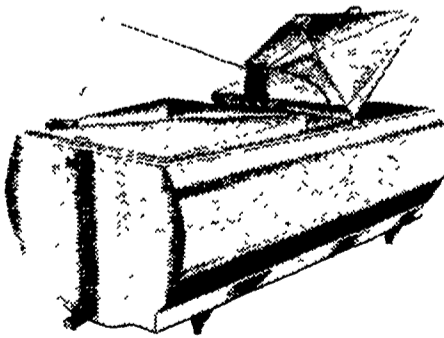
THE ALL STAINLESS STEEL MODEL-C FRE-HEATER FOR ALL BUNK TANKS



The Mueller Model "OH" with HiPerForm cooling, Mueller-Matic Automatic Washing System, and built-in freezer protection control is the most advanced bulk milk cooler in the world. The nation's most progressive dairymen are using it. Shouldn't you be?



ASK US ABOUT LEASE or LEASE PURCHASE ON MILK TANKS



THE MUELLER MODELS OH, MHL, AND MW WITH HIPERFORM MAKE ALL OTHER BULK MILK COOLERS OBSOLETE
SEE THE MUELLER NEW MODELS

★ 500 MW ★ 600 MW

The "MW" is one of the Lowest pouring Height Bulk tanks. Check with us all the new features on the "MW" bulk tank.

If you are in the market for a bulk milk cooler and you don't check all the advantages of the Mueller "OH" "MHL", and "MW" you may be buying an obsolete cooler.

QUEEN ROAD REFRIGERATION

Box 67, Intercourse, PA 17534

Phone: 717-768-9006

or Answering Service - 717-354-4374

★ WE ARE ONE OF THE ORIGINAL

MUELLER DEALERS

★ 24 HOUR SERVICE

USED TANKS

400 Gal. Girton	400 Gal. Esco
400 Gal. D-1 Girton	425 Gal. Esco
400 Gal. D-4 Girton, like new	500 Gal. Esco
	600 Gal. Esco
500 Gal. D-2 Girton	400 Gal. Dari-Kool
500 Gal. Milkeeper	400 Gal. "MHL" Mueller, New