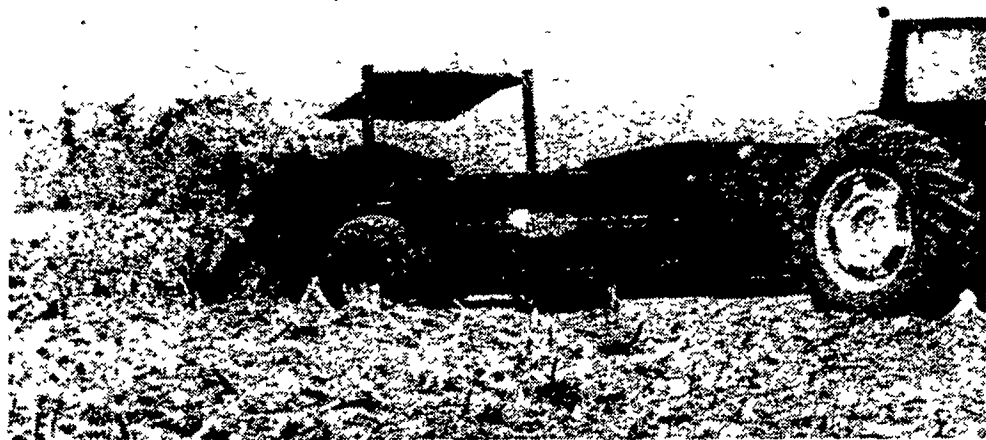


New!

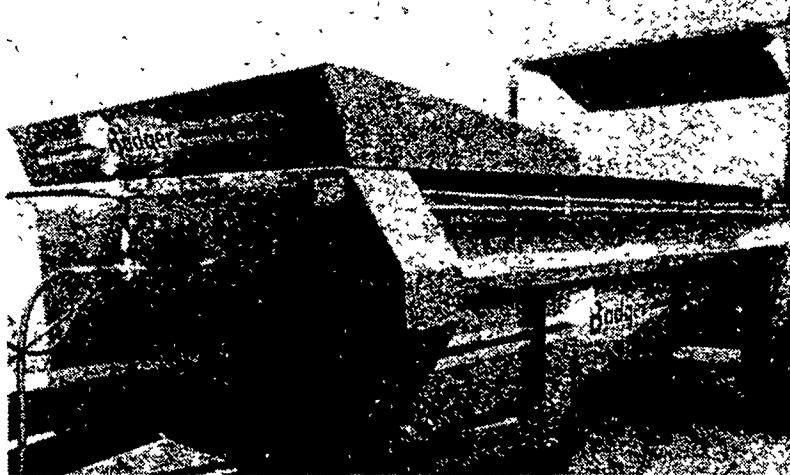
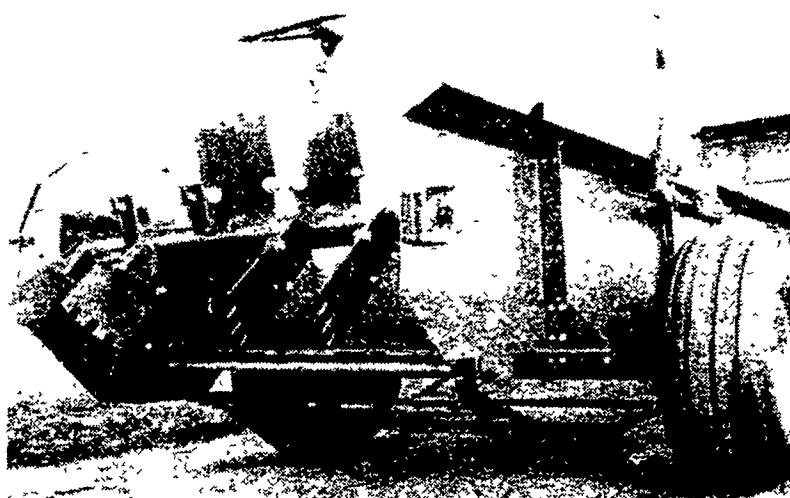
Badger Northland Manure Spreaders

Models 3210 (143 Cu. Ft.) and 3260 (Cu. Ft.)



Badger's new generation of manure spreaders is ready to be launched. Key features such as wood sides and floors and hydraulic apron drive put this spreader design far ahead of the competition.

These units feature the Badger reputation for very high quality at a competitive price.



Features

- Wood Sides**..... of treated exterior grade plywood, provides long life.
- Wood Floor**..... is made of treated one inch standard grade shiplap planks.
- Additional Floor Supports** are provided for extra protection against floor damage from dumping heavy loads.
- Hydraulic Apron Drive**... offers smooth even unloading in 5 speeds from 2 to 20 feet per minute.
- Simple Trouble Free Drives**..... feature belt and pulley primary to a single bevel gear beater drive. Tractor hydraulics power the hydraulic motor to a chain and sprocket direct drive on the apron — simple, economical and easy to maintain.
- 540 Or 1000 RPM PTO**... 540 is standard — 1000 RPM option available.
- Unitized Welded Frame**... carries the entire load from hitch to beater. No reliance on the floor or sides for frame support, like steel sided spreaders.
- Added Front Flares**..... handle soupy manure cleanly.
- Replaceable Spindles**..... of 2 1/4 inch diameter alloy steel, can be field removed for easy replacement.
- Replaceable Beater Combs**..... are made of heavy plate steel and designed to bust up chunks and wads.
- Two Great Aprons**..... are offered as options in a 667X pintle chain or the T-Bar type.



Badger

WAIVER OF FINANCE ON FORAGE EQUIPMENT TILL APRIL 1, 1982

Your Equipment and Service Professionals in this area are:

GRUMELLI'S FARM SERVICE
Mechanics Grove
Quarryville, PA 17566
(717) 786-7318

SHOW-EASE STALL CO.
523 Willow Rd.
Lancaster, PA 17601
(717) 299-2536

PIKEVILLE EQUIPMENT INC.
RD 2
Oley, PA 19547
(215) 987-6277

KNUD HERMANSEN
RD 2
York Springs, PA 17372
(717) 528-4762

CECIL DAIRY SERVICE
RD 1 Rt. 274
1/2 Mi. South Rising Sun, MD 21911
(301) 658-6923

McMILLEN BROS.
RD 1
Loysville, PA 17047
(717) 789-3961

ROY O. CHRISTMAN
RD 1
Hamburg, PA 19526
(215) 562-7218

LLOYD E. KREIDER
RD 1
Cochranville, PA 19330
(215) 932-4700

MELVIN G. MILLER
RD 2
Spring Mills, PA 16875
(814) 442-8279

C. PAUL FORD & SON
RT 1
Everett, PA 15537
(814) 652-2051

JOHN BROWN
RR 1
Forksville, PA 18616
(717) 924-3492

RALPH KETTERER
Deep Run Road
Perkasie, PA 18944
(215) 766-8531

MARLIN W. SCHREFFLER
Pitman, PA 17964
(717) 648-1120

LEONARD WORK
RD 3
Brookville, PA 15825
(814) 849-3361

HONESDALE SPREADING SERVICE INC.
(Formerly Buckingham Dairy Supply)
505 Cliff St. Honesdale, PA 18431
(717) 253-2410