

FARM EQUIPMENT

NI 702 tractor with #710 combine, straw chopper, #711 grain head, \$5500. Farmall M diesel, \$2500, #720 Brady stalk shredder, \$500, 201-454-0889 or 859-3730



**NEW EQUIPMENT**  
8700 Combine  
New Yanmar Diesel Tractors 16-27 hp.  
**NEW HARVESTERS**  
Field Queen 7655 Side Dump

Fox 6650  
Fox 6354  
Fox 3310  
NI 708 Uni w/717 Combine  
Hesston 30B Stacker  
Allen 20' Hyd. Rakes

**USED TRACTORS**  
White 2-70 w/Cab & Loader  
Oliver 1850 D  
White 2-62 4 Wheel Drive  
JD 2510 Gas  
JD 1020 Tractor w/loader

**USED HARVESTERS**  
**FIELD QUEEN SIDE DUMP,**  
Cat Engine,  
3 Row  
Head & Pickup

**NH 1895 Forage Harvester,**  
4 Wheel Drive,  
3 Row Auger  
Head and Pickup,  
283 hours  
Excellent

NI 702 Diesel Uni  
NH 890 3R & Pk. Up.  
Gehl Recutter Blower  
IH 715 Combine, 13' grain & 3 Row Corn Head  
Fox 3310  
Fox 3000 Ex. Cond.

**USED EQUIPMENT**  
Hesston 4800 Big Square Baler  
Fg. Wagons, J.D., AC, Grove, NH  
Hesston Stackhand 10  
Fox Blower  
NI 728 4RN Head  
Woods 5' Rotary  
JD 7000 4R Reg. Planter  
White 5400 6R No-Till Pltr.

IH Cyclo 500 8 Row No-Till Planter  
AC 6R Liquid Planter w/No-Till  
AC 15' heavy duty Sgl. Fold Disc  
Landoll 15 shank Soilmaster Chisel Plow, 19' hyd. fold, excellent

JD 28 Disc Harrow  
NI 323 1R Picker  
JD 224 T Baler  
JD 24 T Baler  
Hesston PT10 Windrower  
NH 479 Haybine  
NI 272 Cut/datoner  
Hesston 320 SP Windrower  
Hesston 1014 Hydro Swing Windrower  
SS9 Glencoe Soil Saver  
NI 710 Combine  
Hawk Bilt 2155 Roll Top Short Block GM 478 for 705 Uni  
Better-Bilt Hi-pressure Vac. Pump  
Farmhand Recutter Blower

630 Brady Shredder 14' Windrower  
**STOLTZFUS FARM SERVICE**  
Cochranville, Pa.  
215-593-2407

FARM EQUIPMENT

**BLOOM TRACTOR COMPANY**

New Ford Tractors & Equipment  
Parts Sales & Service

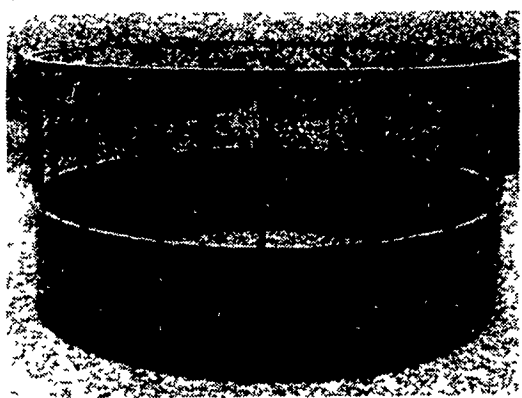
**AUTUMN SALES FEST**  
**14% INTEREST**

Or Cash From \$1300 to \$3000\*  
Or Preseason 'Till March 1, 1982

\* On All Models From 2600 Through TW 30 To All Qualified Customers.  
Good Through October 31, 1981



**BLOOM TRACTOR CO.**  
RD 4 US Rt. 11  
Danville, PA 17821  
717-275-2510



**HAY FEEDER**

- Feeds 18 Head
- Heavy Duty 2 Section Construction

**\$170** Call for Delivery  
IN STOCK

Custom Built

**VENTILATION CONTROL** for

• HOGS • POULTRY • DAIRY  
Opens and closes curtains or windows automatically according to temperature.

**\$325 LESS 10% Through September**

**BEILER HYDRA-MATICS**

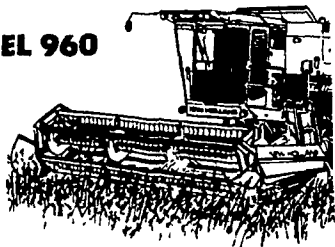
Box 587, RD 3, New Holland, PA  
717-656-7273

The Time Is Right...  
The Price Is Right!!

**New Equipment Special . . .**

**NEW MODEL 960**

**NH GRAIN HEAD**



...For TR 70, TR 75, TR 85 or TR 95 NH Combine, 13' direct cut header with 13' floating cutter bar, 13' hume, HC heavy duty 6 bat pickup reel and 13' protection plates. Above complete, ready to install on combine...



Was \$3,895  
Now Reduced To  
**\$2695**

• Stop In or Call •  
Sales & Service On:  
• Ford • New Idea • New Holland •  
**WALTER G. COALE, INC.**  
2849-53 Churchville Rd.  
Churchville, Maryland  
Ph: (301) 734-7722 or (301) 879-1434

FARM EQUIPMENT

FARM EQUIPMENT

**BRING IN THIS AD AND SAVE!**

**PARTS VALUE OF THE MONTH**

**SAVE UP TO 41% ON ALL IH BATTERIES**

Here's Just A Few Examples:

- ★ CM1 - Fits Farmall A or H  
List \$79 Your Cost With This Ad... **\$46.61**
- ★ ST2E - Fits 706 Diesel  
List \$91 Your Cost With This Ad... **\$53.69**
- ★ PR3EH - Fits 1066 Diesel  
List \$126 Your Cost With This Ad... **\$74.34**

• Other Batteries At Similar Savings.

**OFFER GOOD WITH THIS AD THRU OCT. 31, 1981 OR WHILE SUPPLIES LAST!**

• No Limit on Number You May Purchase

**ERB & HENRY EQUIP. INC.**  
New Berlinville, PA  
1 Mile N. of Boyertown  
Phone (215) 367-2169

**RINGTOWN FARM EQUIPMENT, INC.**  
RD 1, Ringtown, PA  
717-889-3184

**THE NEW NUMBER ONE**

**FALL TILLAGE SPECIALS**

- 770 Offset Disc, 13' 8" Deep Tillage, 32" Blades w/furrow fillers 6188 lbs. **\$7,695.**
- 370 Disc 11' 6", 20" Blades, spring cushion hitch, furrow fillers. **\$3,350**
- 140 4B Rollover Plow w/cover boards. **\$4,185.**
- 720 5B Auto Trip Plow 18" w/steel trash plates and coulters. **\$7,495.**
- 720 4B Toggel Trip Plow 16" w/trash plates and coulters. **\$4,875.**

**PRICED TO MOVE**  
1086 Tractor w/cab...Call us for details

**TIME IS RUNNING OUT**  
\$7,000 Rebate on our 1420 Combine  
Offer Expires Sept. 31, 1981

**USED EQUIPMENT**

- Cultivators for C 806D
- Clark fork lift 656 D
- 710 4 btm. auto. reset 656 hydro
- IH 3 btm. fast hitch plow Farmall 450G
- Howard subsoiler, 5' Farmall M
- IH 12' mtd. Vibra Shank Super A
- Haines 2-row stone Super AV
- picker IH 6' hay crimper
- Oliver grain drill 1500 Schwartz loader
- Rhino weed sprayer Int. 500 Crawler
- Troyer elevator w/3 way blade
- 2 Myers air blast sprayers

FARM EQUIPMENT

FARM EQUIPMENT

**ATTENTION FARMERS**

We have a Sturdy Built Gravity Bin Wagon. Ideal bin for horse farmers. Made to drive along side your picker or tow. With platform on front.

**\$385.00**

Dealers Welcome  
Bell Road Wagon Shop  
Rd 1 Box 280 Bell Rd.  
Christiana, PA 17509

Directions - 1 mile south of Nine Points off 896 on Bell Rd.

Also Stocked at  
Farm-Bilt Machine Shop  
68 S. Weavertown Rd.  
Ronks. PA

**Nothing runs like a Deere**

**THIS WEEK'S SPECIALS**

- NH 1895 SP Forage Harvester w/3 Heads, 390 Hours
- White 4-180 Tractor, 1100 Hours
- White 2-155 Tractor, 950 Hours

**USED TRACTORS**

- White 4-180
- White 2-155
- IH 656 Hydro.
- Case 885, 500 hrs.
- JD 3010
- JD 2840

**CORNPLANTERS**

- JD 7000 w/No-Till
- JD 1240
- JD 1260
- JD 494A

**HAY & FORAGE EQUIPMENT**

- IH 650 Fg. Harvester w/heads
- NH 1895 Sp Fg. Harvester w/3 heads
- JD 35 Fg. Harvester w/N2 head
- JD 3800 Forage Harvester w/2RN
- JD 3 Row N Head
- NH Auger Base 3RN & Pickup
- JD 244 Snapper Head for Fg. Harvester
- NH 880 R2 Head 4 SP
- NI Side Rake
- Hesston #10 Stack Wagon
- NH 1010 Auto Bale Wagon
- NH 276 Baler, no thrower
- NH 273, 271 & 269 B a l e r s w/Throwers
- OMC 9' Mower Cond.
- JD 1207 Mower Cond.
- JD Hay Crimper
- NH 1469 SP Haybine, w/Ford Water Cooled engine
- NH 469 Haybines
- Hesston 1010 Swing Tongue.

**NEW TRACTORS**

- JD 4240 SG, Power Shift
- JD 4040 4 Post, QR
- JD 2940 w/MF WD
- JD 2440
- JD 2240
- JD 1050

**NEW HAY & FORAGE EQUIPMENT**

- JD 1209 Mower Conditioner
- NH 718 Fg. Harvester
- JD 3940 & 3960 Fg. Harvester
- JD 337 Balers
- NH 315 & 320 Balers
- Bale King Bale Boxes
- JD 2420 Sp. 12' Dsl. Mower Conditioner
- NH 1495 SP, 489 & 495 Haybines
- JD 567 Wheel Rake

**NEW TILLAGE**

- JD 1250, 2600 & 2700 4B Plows
- JD 1600 Chisel Plow
- JD 215 & 1640 Disc Harrows
- JD 336 Lever Harrows

**NEW SKID STEER LOADERS**

- Bobcat 530, 642, & 743.

**NEW SPREADERS**

- NH 329, 519, 679, & 791
- JD 392 Spin
- JD 450
- Martin V Type & Scavenger

**NEW MISCELLANEOUS**

- JD 300 Husker
- JD 335 Skid Sprayer
- Most Model JD Loaders & Blades
- EZ-Flo Gravity Boxes

**FREE FINANCE**  
On NH, Forage Till March 1, NH Hay Tools Till April 1, JD Hay & Fg. Equip. Till May 1.

**FREE FINANCE** on New & Used JD Tractors Till March 1, 1982

**CLUGSTON IMPLEMENT, Inc.**  
1 Block off I-81 Exit 8  
Chambersburg, PA 17201  
Phone: 717-263-4103

**bobcat** **SPERRY** **NEW HOLLAND**