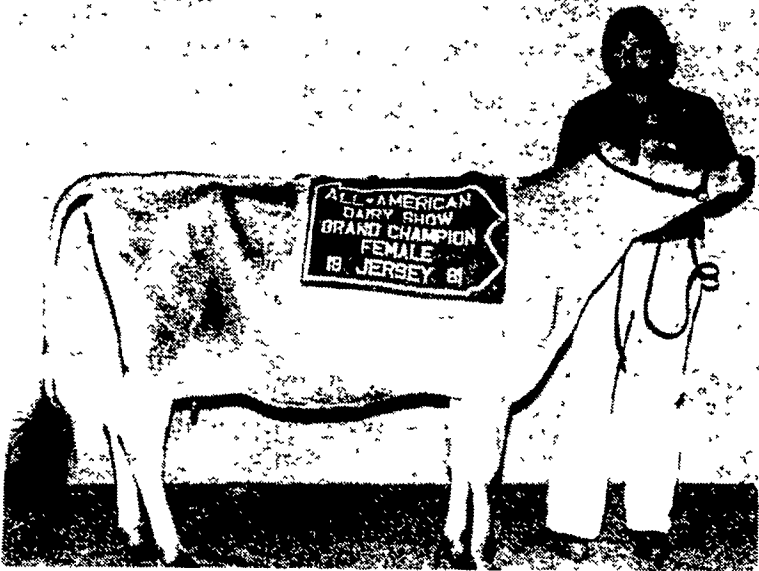


Jersey show

(Continued from Page A20)

Noble Surville and out of Kalmarland Blue Diana. Kalmar

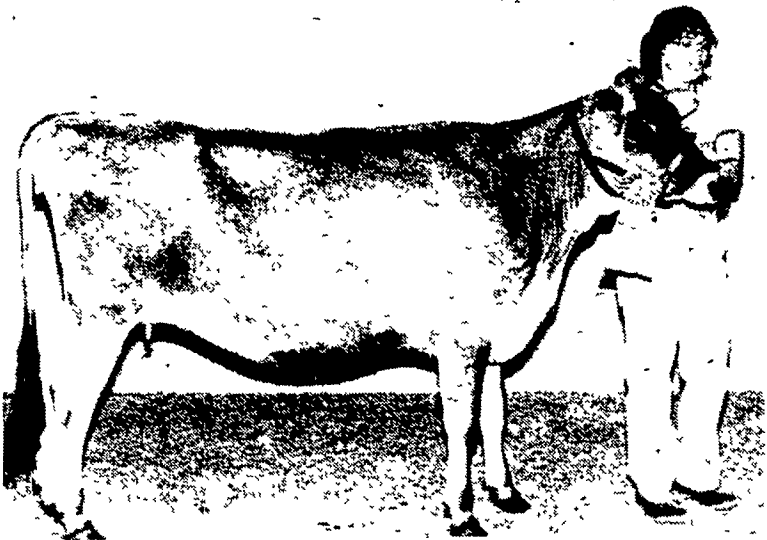
Farm is the home of the William C. Eliason Family. Results follow from the All-



The All-American champion banner drapes across the top Jersey, owned by the Robert Stiles Family of Waverly Farms, Clearbrook, Va. The champ, Hetherington Stardoms Babette is a senior 2-year-old sired by Marlu Mileston Stardom. Shown with the grand champ is Paul Stiles.



Kalmar Jody Blue Dino was named Grand Champion Jersey Bull during the PA. All-American Dairy Show. The 2-year-old "Dino" was owned and exhibited by the William C. Eliason Family of Kalmar Farm, Harrington, Del.



Gretchen Buecheler, Marcellus, N.Y., is pleased with her victory after her senior yearling was named Reserve Junior Champion. The reserve champ, Pacesetter Flower of SSF is sired by HVF Pacesetter and out of Faithful Flora of SSF.



Mr. and Mrs. Fred Luchsinger, display their Junior Champion Jersey, Lavender Keren Panda of SSF. The Luchsingers were also awarded the Premier Breeder and Premier Sire Banners. They reside at their Silver Spring Farm, Syracuse, N.Y.

American Jersey Show, judged by John Morris, former dairy Extension specialist at the University of Maryland.

Junior Yearling Bull
1 J & S Jerseys, Res Grand Champion, 2 Wallymae Farms, Harrisonville, Pa
Bull 2-Year-Old
1 Kalmar Farm, Grand Champion
Junior Heifer Calf
1 Skip A Rilla Jersey Farm, Toms Brook, Va, 2 Pleasant Valley Jersey Chambersburg, 3 Ralaine Jerseys, Everett, 4 Don Mae Farm, Cham

bersburg, 5 Clover Hill Farm, Manassas, Va
Intermediate Calf
1 Silver Spring Farm, 2 Stephanie Kocher, Mansfield, 3 Clover Hill Farm, 4 Spring Valley Farm, Westminster, Md, 5 Waverly Farm
Senior Heifer Calf
1, 2 Mydrantz Jerseys, Wooster, OH, 3 Kalmar Farm, 4 Waverly Farm, 5 Spring Valley Farm
Junior Yearling Heifer
1 Stephanie Kocher, 2, 3 Mydrantz Jerseys, 4 Heath's Jerseys, Westminster, Md, 5 Spring Valley Farm
Senior Yearling Heifer
1 Silver Spring Farm - Junior Champ, 2 Gretchen Buecheler, Res Jr Champion, 3 Waverly Farm, 4 Top-O Hill Farm, Downingtown, PA 5 Heath's Jerseys
Junior Get-of-Sire
1 Mykrantz Jerseys, 2 Spring Valley Farm, 3 Top-O Hill Farm, 4 Clover Hill Farm, 5 Ralaine Jerseys
Dry Cow, 3 Year or Over
1, 3 Skip A-Rilla Jersey Farm, 2 Waverly Farm, 4 Headspring Farm, Newberry, SC, 5 Spring Valley Farm
Junior 2-Year-Old
1, 3 Silver Spring Farm, 2, 5 Waverly Farm, 4

Top-O-Hill Farm
Senior 2 Year Old
1 Waverly Farm, Grand Champ, 2 Top-O-Hill Farm, 3 Silver Spring Farm, 4 Gaywinds Farm, 5 Skip-A-Rilla Jersey Farm
3-Year-Old
1 Gaywinds Farm, Res Grand Champion, 2 Waverly Farm, 3, 4 Silver Spring Farm, 5 Headspring Farm
4-Year-Old
1, 3 Mykrantz Jerseys, 2 Skip-A Rilla Jersey Farm, 4 Waverly Farm
5 Years or Over
1, 5 Waverly Farm, 2 Silver Spring Farm, 3 Kalmar Farm, 4 Spring Valley Farm
Best Milking Female
Gaywinds Farm
Best Three Females
1 Silver Spring Farm, 2 Waverly Farm, 3 Mykrantz Jerseys, 4 Headspring Farm, 5 Skip-A-Rilla Jersey Farm
Premier Sire
Golden Faithful
Premier Breeder
Silver Springs - Luchsinger Family
Premier Exhibitor
Waverly Farm - Stiles Family

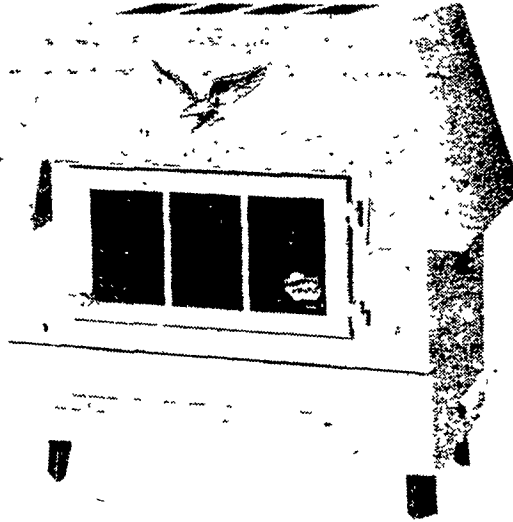
Coal Heating ...an American Tradition

STOP

Don't buy
a coal stove
without comparing!

AT LAST — An American-Made
Coal Stove so efficient it's called

VICTORY 700



VICTORY 700
COAL STOVE

- 100% American Cast Iron
- Holds fire up to 30 hrs. per loading
- Thermostatically controlled
- Free standing, or fireplace installation

Made 90 miles away,
NOT 9000 miles

by Union Manufacturing Company
Manufacturers of Fine Castings Since 1894

Consider the following and statistics before you purchase a stove. The Victory 700 is a lifetime investment, insured by a lifetime guarantee.

- All American heavy duty cast iron and steel construction
- Air-tight
- Weighs 460 lbs.
- Hood raises to expose ample cooking surface
- Classic design
- Large glass door for viewing fire, (Corning Glass Co's newest, high-tempered, pyroceram glass)
- 60,000 BTU per hr.
- Holds Fire for up to 30 hrs. on one loading
- Heats approx. 2,000 to 2,500 sq. ft.
- Up to 90% efficiency
- 5 Position automatic thermostat Control provides precise heat SETTING
- Heavier cast iron heat exchangers for high efficiency
- Standard 6" rear flue opening
- Extra large ash drawer with cover
- Build-in shaker grates
- Hopper holds 40 lbs. of Coal
- Automatic feed
- Burns pea size anthracite coal
- Lower, safer surface temperatures
- Rear vent opening is 21" to top. Perfect for fireplace installation.

Lifetime Guarantee:

Union Manufacturing Company, Inc. guarantees specific cast iron components for the lifetime of the original purchaser, when stove is maintained in accordance with Owner's Manual.

SPECIAL
NOW THRU. OCT. 31 \$100 REBATE

PEQUEA WOODWORKING

2704 BACHMANTOWN ROAD, RD 1, RONKS, PA 17572

Phone (717) 687-6763

Located ¼ mile south of Rt. 30, Just off of Ronks Road
Open Daily Mon. thru Sat. 8 AM to 4 PM; Fri. 8 AM to 8 PM