

## Public Sales Register

FRI. OCT. 9 - 12 Noon and SAT. OCT. 10 - 9:00 A.M. and 12:30 P.M. Large 2 Day Public Auction of Farm, Antiques, Household Goods, Glassware, Farm

Machinery and Tools. Located at farm site, from Gettysburg, PA, taking U.S. Business Rt. 15 south approx 1 mile, turn right onto LR-01052 (opposite peach orchard) and

### PUBLIC SALE

**OF VALUABLE REAL ESTATE  
3 Acre Farmette  
SATURDAY, OCTOBER 10  
1:00 P.M.**

Located along Rt. 322 3 miles East of Ephrata, Lanc. Co., Penna.

A certain tract of land consisting of app. 385 ft. of road frontage erected thereon a:

#### 1 1/2 Story Frame Dwelling

with kitchen, dining room, living room, 9 bedrooms, 2 full baths, 2 half baths, oil fired hot air heat, with 2000 gal. underground oil tank, well with pressure system. New septic tank and seepage bed.

#### 32x40 Hip-Roof Barn

with 14x40 fore-bay attached, modern electricity, running water, also 550 gal. underground gas tank with gasboy pump.

#### Approx. 45 Young Bearing Fruit Trees

Apple, peach, plums, etc., 2 English walnut trees and app. 1 acre young strawberry plants.

**YOUR INSPECTION INVITED:** Sat., Oct. 3 from 1 P.M. to 4 P.M. or for information call, 717-354-9397.

Note: A large part of this house has been built recently. It has storm windows and is heavily insulated. This place is noted for its fresh produce roadside stand.

Terms: 10% Down day of sale. Balance on March 1, 1982.

Terms by:

**MARVIN L. & SUSIE L. HABEGGER**

Atty.: Weaver & Wentz  
Auctioneers:

Lamar Z. Sensenig, 354-8116  
Paul W. Horst, 445-5119

continue approx. 5 1/2 miles to sale site. John S. Eiker Estate C David Redding, Auctioneer.

FRI. OCT. 9 - 7:30 P.M. Public Sale of Club Calf Located at the Cow Palace, State Fairgrounds, Timonium, MD Eastern National Club Calf Show and Sale

SAT. OCT. 10 - 10:00 A.M. Special Heifer Sale Selling Approx. 700-800 head Held at New Holland Sales Stables, New Holland, PA.

SAT. OCT. 10 - By Edwin G. & Emma M. Martin Take 322 E from Ephrata to Hinkletown. In Hinkletown take E. Farmersville Rd. to Farmersville. Property located along E. Farmersville Rd. at E. end of Farmersville. 5 1/2 A farm, household goods, antiques and farm equipment. John E. and Paul E. Martin Auctioneers

SAT. OCT. 10 - 10:30 A.M. Public Sale of Real Estate, Personal Property, Shotguns Located 20

miles south of Sunbury, 4 miles northwest of Klingerstown, 3 miles southeast of Greenbrier in Snowdale Valley, turn off Rt. 225 at Campbell Chevrolet in Village of Red Cross go east past Rebeck to Greenbrier (watch for auction sign along Greenbrier to Klingerstown Rd on the day of sale) Faye S Morgan Owner George and Mike Deibert Auctioneer.

SAT. OCT. 10 - Public Sale of acreage, house and garage Located in Juniata County Long Bros Auctioneers

SAT. OCT. 10 and 24 - 9:00 A.M. Public Sale of Antiques and Old Collec-

tors Items. Located off Rte. 83 at Exit 14 (Yocumtown - between Harrisburg, PA and York, PA), go north on Rte. 392 to Yocumtown Rd, turn right 2 miles to sale on left. Blaine N. Rentzel, Auctioneers.

SAT. OCT. 10 - 11:00 A.M. Public Sale of Valuable Real Estate. Located one mile west of Ono along Rte. 22, East Hanover Twp., Lebanon County, PA Dale Rudy and Roger Myers, Auctioneers.

SAT. OCT. 10 1:00 P.M. Marvin L & Susie L Habegger Located on 322 3 mi east of Ephrata 3 A Farmette

Larmar Sensenig & Paul W. Horst Auctioneer

SAT. OCT. 10 - 10 A.M. Public Sale of heifers. New Holland Sales Stables

SAT. OCT. 10 - 9 A.M. Public Sale of Valuable Farm Equipment, Antiques and Household Goods. Located between Felton and Winterstown near Lebanon Lutheran Church. North Hopewell Twp., York, Co., PA Reynold Burke, Auctioneer.

SAT. OCT. 10 - 12 Noon Public Sale of Farm Machinery and related items. Located 6 miles south of Richfield, Juniata Co on the road from Richfield to Oriental, follow direction signs off Rt. 35 at Richfield and off Rt. 104 Elwood C Flowers. Owner 717-653-4839 Bryan D. Imes, Auctioneer

SAT. OCT. 10 - 12 Noon Public Sale of Farm Machinery. Located 6 mi S of Richfield, Juniata Co on road from Richfield to Oriental, follow direction signs off Rt. 35 at Richfield and off Rt. 104 Elwood C Flowers, owner Bryan D. Imes Auctioneer

SAT. OCT. 10 - Public Auction 10:00 A.M. Real Estate 1:00 P.M. Real Estate and Antiques Sale. Located 1807 Old Phila. Pike, Lancaster. 1/2 mile east at Bridgeport on Route 40 Anna M. Landis, owner Ira Stoltzfus & Son & Jay Leary - Auctioneers

SAT. OCT. 10 - 11:30 A.M. Public Sale of Cattle and Farm Machinery. Located Adams Co., PA 15 miles west of York, 15 miles east of Gettysburg off Rt. 30, turn north on Canal Rd to St. Mary's Rd. turn left, 1/2 mile to farm. Claude Grim Sons, Inc. Clair Slaybaugh, Auctioneer.

SAT. OCT. 10 - 9 A.M. Public Sale of Cattle and Antiques, Collectors Items, Farm Equipment and Personal Property Located at RD 3, York, PA along Springwood Rd in York Twp. Eli Williams Estate. Jacob A. Gilbert, Auctioneer.

SAT. OCT. 10 - 1 P.M. Public Sale of Valuable Real Estate, 3 acre farmette. Located along Rt. 322 3 miles east of Ephrata, Lanc. Co., PA Terms by Marvin and Susie Habegger Lamar Sensenig and Paul Horst, Auctioneers.

SAT. OCT. 10 - 9 A.M. Public Sale of Real Estate, Farm Implements, Antiques and Household Items. Located along Rt. 401 7 miles east of Elverson, 1 mile west of Rt. 100. Terms by Irene Snyder, Lester Weaver and Barry Wanger, Auctioneers.

SAT. OCT. 10 - 12 Noon. Sale of '84 Hi Grade Holsteins with DHIA records. Located in Brookdale, PA, Rt. 29, Susquehanna Co. Hallstead RFD Lee Wilbur, owner. Bunnell and Weaver, Auctioneers. 965-2375

### PUBLIC AUCTION

**VALUABLE REAL ESTATE  
3 ACRE FARMETTE  
SATURDAY MORNING, OCT. 17  
10:00 A.M.**

Located in Rapho Township, Lanc. Co., Pa. Just west of Village of White Oak along the Elizabethtown Road.

Real Estate consists of 3 acres M/L thereon erected a 4 bedroom farmhouse with living room, dining room, kitchen. 1 1/2 baths, plus various storage areas and laundry. Also large bank barn with good stable area. This property has an outstanding view of lots of beautiful countryside, hard to come by.

You will want to inspect this one. For your convenience property will be open for inspection Oct. 3rd 1:00 P.M. till 3:30 P.M. also Oct. 10th 1:00 P.M. till 3:30 P.M.

Note: This is a desirable farmette, have horses on your agenda? Come see!

Also 3 fancy building lots to be offered separately. Owner financing available on lots only. By previous arrangement with owner.

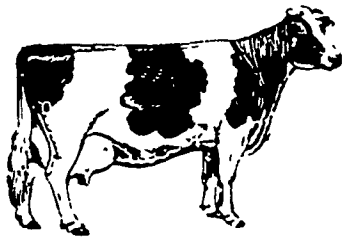
Sale By Owners-

**JOHN P. & SUSANNE S. BALMER  
665-4132**

*E.M. Murry Associates*

287 Lime Rock Road  
Lititz, PA 17543  
Elmer Murry 626-5244 - 626-2636  
Richard Murry 626-8175 - 949-2280  
Ken Miller 665-2073  
Professional Auctioneers,  
Appraisers and Advisors  
Since 1953

Arnold Beyer & Homsher - Atty's



## NEW HOLLAND SALES STABLES ANNUAL FALL HEIFER SPECIAL

**800-1000 registered and grade heifers  
All ages from small calves to fresh heifers**

**SATURDAY, OCTOBER 10  
10 A.M.**

Fresh heifers and all registered heifers will sell at 12 Noon. Special consignment from Truman Martin of Hagerstown, MD. 20 head of opened registered heifers out of dams with 16-19,000 milk. Sired by Gemini, Jet Stream, Char Sam Elevation Pasb and Ropies Chief Buff.

4 bred heifers consigned by J. Robert Metzler of Christiana, PA. A Gemini daughter her dam 87 points with over 20,000 of milk and 786 of fat. A Jet Stream daughter, her dam, good plus with 18,000 of milk and 672 of fat. A Marlu Titan daughter her dam 22,627 of milk and 754 fat. A Sterk Exclusive daughter, her dam classified very good with 20,859 of milk and 872 of fat. These 4 heifers are due late fall to Green Bank Diplomat. Also several fancy calves that are show age. Lots of grade heifers, all ages, Short bred and many close springers. All heifers tested for out-of-state shipment. Many calfhooed vaccinated. Trucks and motels available.

Note to consignors: Please have registration papers, health charts and breeding information along with heifers Friday the day before the sale. Out of state buyers need credit reference.

For more information, contact Norm Kolb 717-397-5538 or Abe Diffenbach, Sales Barn office 717-354-4341.

### PUBLIC SALE SAT., OCT. 3, 1981

9:30 a.m.

Located off Route 322 at Burnham Exit, South on Ferguson Valley Road 1/4 mile, at First Cross Road turn Right -- Watch for Signs.

#### WILL OFFER Farming & Logging Equipment Some Household Items FARMING EQUIPMENT

Nuffield 42 diesel tractor with snow plow and loader with pulley, one New Idea manure spreader - self-unloading 60 bu., one Block Buster wood splitter (brand new), portable Arkfeld Fram Scale weight up to 500 lbs., 1-12 ft. harrow - J.D., 1-8 ft. disk - I.H., 8 ft. drag, one turkey plucker - 220V, one stainless steel draining table, wood saw w/32 in. blade, 3-4 hole hog feeders, five farrowing crates w/nipple waterers, big holders, Myers water pump motor - rebuilt, steer pinchers, one large hog pen on skids - 10'x20', hay rack, Surge milking pump, A.O. Smith hot water heater - 40 gal., 4 bulb head brooder, Holden electric fence charger, three large wire gates for sale ring, one stock truck partition, 25 bu. crates, shingles, one new 32"x80" storm door - white, 6 in. gate valve, 5 pc. 1 1/4 plastic pipe - 20 ft. long, 16.9x24 chains for tractor, barn fan.

#### LOGGING EQUIPMENT

One-36 ft. Trailco trailer w/log racks, one ten wheeler log rack (brand new), one ten wheeler steel flat bed for truck, 1-1/2 cord wood rack, 22 ft. trailer chains light hard steel and binders, one Block Buster wood splitter - new, large Wards roll around tool box, one 20 ton jack, vise to hold chain saws, Partner 12 chain saw - runs good (needs clutch), 10-20 truck tires w/rims, one grease pump, 55 gal. barrels, about 20 gals. of steam cleaner and many other small items.

#### ANTIQUES - HOUSEHOLD SPORTING GOODS

Copper apple butter kettle, milk can, 1-20 ft. picnic table and seats, like new gas barbeque grill, dishes, smoking stand, Depression glass, dated jars, pigeon thrower - will throw two birds, MEC 600 jr. shot shell reloader, rifle shell press and dies, fishing rods, check writer, broad axe, hewing axe. There are many other items too numerous to mention.

Terms: CASH Lunch stand by Amish School

Owners-

**MR. & MRS. WILLIAM E. SHEAFFER  
Malcolm M. Speicher - Auctioneer  
14 Pleasant Avenue  
Belleville, Pa.  
Phone (717) 935-5260  
Member of N.A.A. & P.A.A.**

## CONSIGNMENT AUCTION

**MONDAY, SEPTEMBER 28, 1981**

9:30 A.M.

★ Usual Run of Tractors, Machinery and Construction

**WE ACCEPT  
CONSIGNMENTS  
ANYTIME**

★ New Tools & Tarps Sell First  
★ Lots of Pickers & Choppers  
Tractors sell at approximately 2:30 followed by construction

## WENGER'S FARM MACHINERY, INC.

**S. Race Street, Myerstown, PA 17067  
717-866-2135**