

## Expect unexpected arrivals after hauling

LANCASTER — During fair and show season, dairy cattle are trucked here and there and often return to the farm with a few extra ribbons and banners.

But occasionally, many return home with a calf in tow — a calf which beats the due date by a couple weeks.

Due to truck rides, an early birth is not uncommon at shows and sales, says Penn State Extension veterinarian Lawrence Hutchinson.

Hutchinson explains that hauling pregnant animals can hurry freshening, especially in the last two to three weeks of gestation.

Abortions do occur, but says

Hutchinson, are less common.

Meanwhile, calves born away from the farm do surprisingly well.

"Someone is always in attendance at shows and a newborn tends to get colostrum soon," says Hutchinson. He also attributes the clean bedding and environment to the calf's well-being.

When hauling is necessary, Hutchinson suggests a farmer take as much caution and care in loading and unloading as possible.

If the blessed event should occur while at a show or sale, a bellyful of colostrum and a painted navel get the little one started in the right direction, he concludes.

## 1982 wheat reduced acreage reminder

WASHINGTON, D.C. — Secretary of Agriculture John R. Block recently announced his intentions to implement a 15 percent "reduced acreage" program for the 1982 wheat crop to

offset the effects of record supplies and depressed wheat prices.

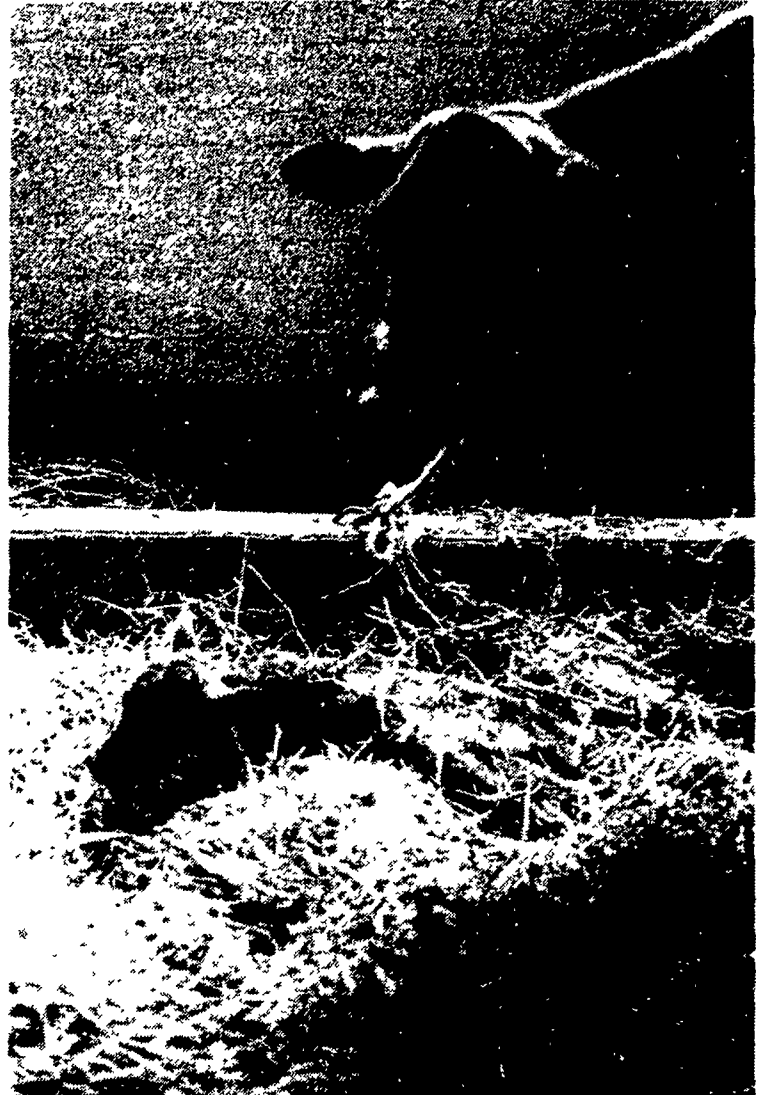
Program operating procedures will be issued after pending farm legislation is enacted into law.

"Wheat supplies in the United States are 14 percent above last year," Block said. "The carryover next June is expected to exceed 1 billion bushels, the highest level since 1977-78. The reduced acreage program will strengthen prices by reducing the 1982-83 marketing year supplies."

Block said the increase in supplies and decrease in prices is the result of two successive record U.S. wheat crops and a record-setting 1981 world harvest.

The program will be voluntary so producers can decide for themselves, based on market conditions, whether they want to participate.

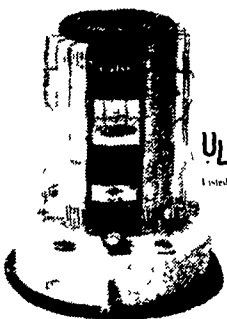
"Soil conservation will be strongly stressed in this program," Block said. "The reduced acreage will have to be devoted to conservation uses."



Surprise! Mama Jersey watches over her brand new baby, born just minutes after she stepped off the auction block at the PA. State Jersey Sale. Although this little fellow made his entrance about two weeks too early, Penn State Extension veterinarian Larry Hutchinson says early births are not uncommon when animals are hauled to and from events. In fact, Hutchinson says these unexpected arrivals do surprisingly well.

**SAVE \$30 - \$60 PRE-SEASON SALE**  
Includes All Models

**KEROSUN**



**BOWMANS STOVE SHOP INC.**

Follow Signs from Light at Hinkletown on Rt. 322  
717-733-4973  
R.D. 3 Napierville Rd., Ephrata, Pa.  
Tues., Wed., Sat. 9-5  
Thurs., Fri. 9-9  
Closed Monday  
Financing Available

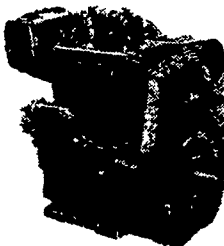


**MEMO**

**HAY, STRAW & EAR CORN SALE**

EVERY MONDAY At 11 A.M.

NEW HOLLAND SALES STABLES, INC.  
Phone 717-354-4341  
Lloyd H. Kreider, Auctioneer



Let Us Know Your Service Problems

**HOOVER DIESEL SERVICE**

PH: 717-656-6133  
2998 West Newport Rd  
Ranks, PA 17572

### APPLE BUTTER

The 29th Annual Apple Butter Boiling Will Be At

**Barner's Church Grove**  
3 Miles Northwest of Liverpool, Pa.  
**SATURDAY, OCTOBER 10**

Apple Butter Will Be Sold On The Grounds

Bring Your Own Containers

Cider Sold in Gallon Jugs

Craft Items Will Be Sold

**-DUTCH DINNER-**

Will Be Served - Family Style

All You Can Eat

Chicken, Ham and Beef Bott-Boi, Corn, Peas, Slaw, Home-Style Bread, Apple Butter, Schmier-Kase, Home Made Ice Cream and Pie.

Price: Adults \$4.00 Children Under 12 - \$2.00

Dessert Extra Start Serving 12 Noon to ?

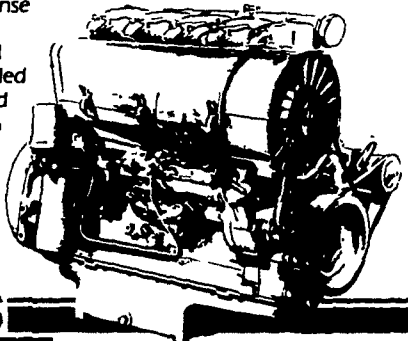
**RAIN OR SHINE**

"WE BOILED IN '76 FOR THE SMITHSONIAN INSTITUTION FESTIVAL OF AMERICAN FOLK LIFE AT WASHINGTON, D.C."

**AIR DIESEL**

It can eliminate 40% of all your engine maintenance problems.

A Deutz AirDiesel is a true no-nonsense engine. There are no troublesome components such as hoses, fans and radiators associated with liquid-cooled engines. A Deutz is cooled by air and is engineered to save you up to 20% in fuel over other diesels. Over one million AirDiesels from 5 to 500 HP are working in all fields of application throughout the world.



**KHD DEUTZ**

90% of all multi-cylinder air-cooled diesels in service today are Deutz

**Stauffer Diesel Inc.**

PHONE 717-354-4181 NEW HOLLAND, PA 17557

**PAG SEEDS**

**FIELD DAY**  
**TUES., SEPT. 29**  
10 A.M. - 3 P.M.

**PLACE:** Craig Stoltzfus Farm

**Directions:** Rt. 82 south of Loag Corner next to trailer court, RD 2, Elverson, PA.

PAG Representative will be present.  
Box lunch will be served.

Sponsored by

**CRAIG STOLTZFUS**  
**PAG SEEDS**