



Potter County DHIA Report

August 1981

| OWNER | NO. COWS | LBS. MILK | % FAT | LBS. FAT |
|------------------|----------|-----------|-------|----------|
| I. Smoker & Sons | 100.1 | 53.7 | 3.8 | 2.04 |
| Jay N. Heisey | 73.9 | 59.6 | 3.3 | 1.98 |
| Jack Thomas | 44.3 | 52.9 | 3.6 | 1.91 |
| John C. Traub | 38.0 | 56.5 | 3.3 | 1.87 |
| Paul Buck | 26.0 | 47.1 | 3.8 | 1.79 |
| Snyder Farms | 23.8 | 46.1 | 3.8 | 1.76 |

Lactation Records for Potter County for August, 1981 for cows over 750# butterfat.
Floyd Long, Coudersport

| OWNER | NAME OR NUMBER | BREED | AGE | DAYS IN MILK | LBS. MILK | % FAT | LBS. FAT |
|-------|----------------------------------|-------|------|--------------|-----------|-------|----------|
| | Merry | H | 3-10 | 305 | 20,496 | 3.9 | 806 |
| | Guy Dunn, Coudersport | | | | | | |
| | Michelle | H | 4-2 | 286 | 17,596 | 4.4 | 769 |
| | Silver | H | 2-10 | 305 | 20,147 | 3.9 | 786 |
| | George Barker, Ulysses | | | | | | |
| | Vera | H | 6-1 | 305 | 18,613 | 4.5 | 840 |
| | Joni | H | 6-0 | 305 | 17,979 | 4.3 | 780 |
| | Maynard Sherman, Westfield | | | | | | |
| | Waddy | H | 3-2 | 305 | 20,338 | 3.7 | 753 |
| | Ivan Smoker & Sons, Genesee | | | | | | |
| | Onalee | H | 4-0 | 305 | 20,344 | 4.0 | 807 |
| | Bella | H | 2-6 | 305 | 18,914 | 4.3 | 820 |
| | Robert F. George, Jr., Roulette | | | | | | |
| | Aster | H | 5-2 | 305 | 21,799 | 3.6 | 774 |
| | Jack Thomas, Ulysses | | | | | | |
| | Red | R&W | 6-9 | 297 | 21,707 | 4.0 | 865 |
| | William Butler, Sabinsville | | | | | | |
| | Rene | H | 3-2 | 305 | 24,749 | 3.5 | 863 |
| | Jay N. Heisey, Rexville, N.Y. | | | | | | |
| | Maggie | H | 8-11 | 305 | 26,162 | 3.1 | 807 |
| | Diane | H | 3-8 | 281 | 25,917 | 3.3 | 858 |
| | John C. Traub, Galeton | | | | | | |
| | Evelyn | H | 3-10 | 286 | 22,332 | 3.5 | 778 |
| | James Cady, Harrison Valley | | | | | | |
| | No. 32 | H | 4-9 | 305 | 19,650 | 4.3 | 854 |
| | Robert Fowler & Sons, Galeton | | | | | | |
| | Fifi | H | 4-6 | 305 | 24,865 | 3.3 | 825 |
| | Gene & Phyllis Thompson, Ulysses | | | | | | |
| | No. 212 | H | 8-6 | 305 | 19,360 | 4.0 | 766 |
| | Jack Knowlton, Coudersport | | | | | | |
| | Sandy | H | 4-6 | 305 | 17,471 | 4.4 | 766 |

U. of Del. plans Soybean Check-off Day

NEWARK, Del. — The University of Delaware is holding a Soybean Check-Off Day at its Substation farm near Georgetown on Thursday, October 1. The event will run from 8:30 to 11 a.m. It is intended to give Delaware soybean growers a chance to observe and evaluate current projects at the experimental farm which have been supported in part by check-off funds.

Ten extension and research projects at the Substation will be featured on the tour. Each is aimed at providing Delaware's soybean growers with information which will help reduce production costs and increase yields. Plots on display include:

A study of the performance of soybean varieties under different row spacings and planting dates to determine how these factors affect yields;

An evaluation of soybean varieties for their performance under Delaware growing conditions;

An evaluation of the performance of soybean varieties under no-till double-cropped conditions;

A study of the response of soybean varieties to 2,4-DB in order to develop a low-cost, effective post-emergence control for morningglory in this crop;

An evaluation of soybean varieties for their resistance to insect pests;

A study of the effect of fertilizer rate and placement on irrigated and non-irrigated soybeans;

Evaluation of a new laboratory method for determining soybean seed vigor

Evaluation of the effectiveness of several post-emergence chemicals with various sprayer

adjustments; A varietal test for resistance to the soybean cyst nematode;

A comparison of suggested fertilizer programs for soybean production.

All projects were supported in part by grants awarded by the Delaware Soybean Board, which is responsible for administering funds collected under the state's new one-cent-a-bushel soybean check-off program. Delaware soybean growers voted to adopt the check-off system last year.

There are between 2,000 and 3,000 soybean producers in the state. The October 1 Check-Off Day tour is an opportunity for them to see how some of the money collected has been spent and to ask questions about the projects.

Cecil DHIA

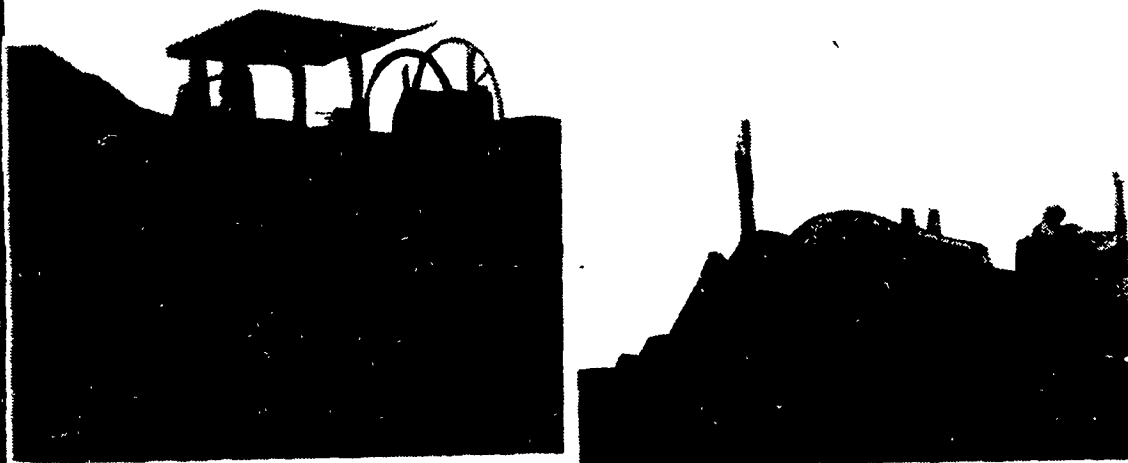
Following is a list of herds from Cecil County's DHI testing program that are high in butterfat production. This information is for the month of July and is gathered from information received in the Cecil County Extension Office.

| OWNER | Average LBS. MILK | % FAT | AVERAGE LBS. FAT |
|------------------------|-------------------|-------|------------------|
| Dix Lee | 52 | 1.67 | 48.2 |
| Lovdal Farms | 71 | 1.65 | 40.9 |
| Charles P. England | 63 | 1.62 | 59.9 |
| J.B. Carson, Jr. | 51 | 1.60 | 41.3 |
| Pioneer Valley Farm | 128 | 1.57 | 46.8 |
| Zee-M Farm | 77 | 1.56 | 44.9 |
| F.G. Miller & Sons | 59 | 1.55 | 42.3 |
| Carl C. Stafford | 80 | 1.53 | 43.3 |
| Long Green Farms, Inc. | 115 | 1.52 | 42.5 |
| Albeck Farms, Inc. | 189 | 1.50 | 42.9 |
| Carroll E. Davis | 119 | 1.50 | 45.1 |



The incredible edible egg

DRAINAGE PROBLEMS?



COCALICO EQUIPMENT HAS THE TWO MACHINES TO HANDLE YOUR DRAINAGE PROBLEMS.

★ Both machines Equipped with Laser Beam Grade Control

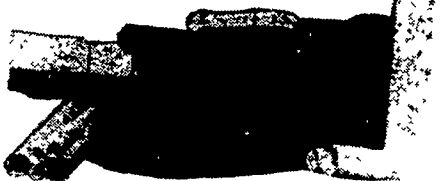
Drainage Pays High Returns

| Investment | Typical Annual Return |
|----------------|-----------------------|
| Land Drainage | 21-46% |
| Farm Buildings | 3-23% |
| Farm Land | 11% |
| Stocks | 7.4% |
| Bonds | 6.1% |

COMPARE

Even with the conservative figures shown here, it's obvious that land drainage should top farmers' lists of investment priorities.

★ We Stock Heavy Grade Tubing which Exceeds SCS Specifications. In sizes 4", 6", 8", 10" and 12".



NOW AVAILABLE 15" & 18" Tubing

★ Also Pipe And Fittings For Tile Outlet Terraces.



COCALICO EQUIP. CO.

DRAINAGE & EXCAVATING

RD #3, DENVER, PA 17517 PH: 215-267-3808



FRANK A. FILLIPPO, INC.

— WANTED —

DISABLED & CRIPPLED COWS, BULLS & STEERS

Competitive Prices Paid

Slaughtered under government inspection

Call:

Frank Fillippo -

Residence - 215-666-0725

Elam Ginder - 717-367-3824

C.L. King - 717-786-7229