

# MEET US AT THE FAIRS

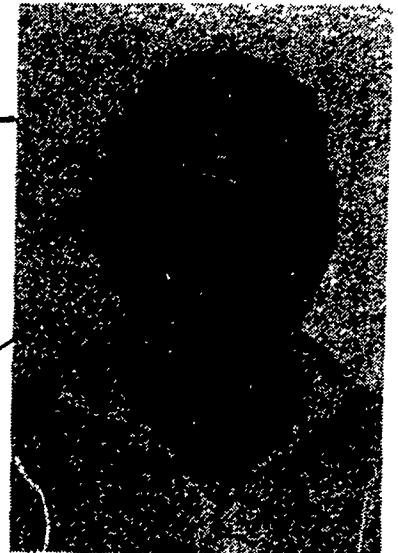
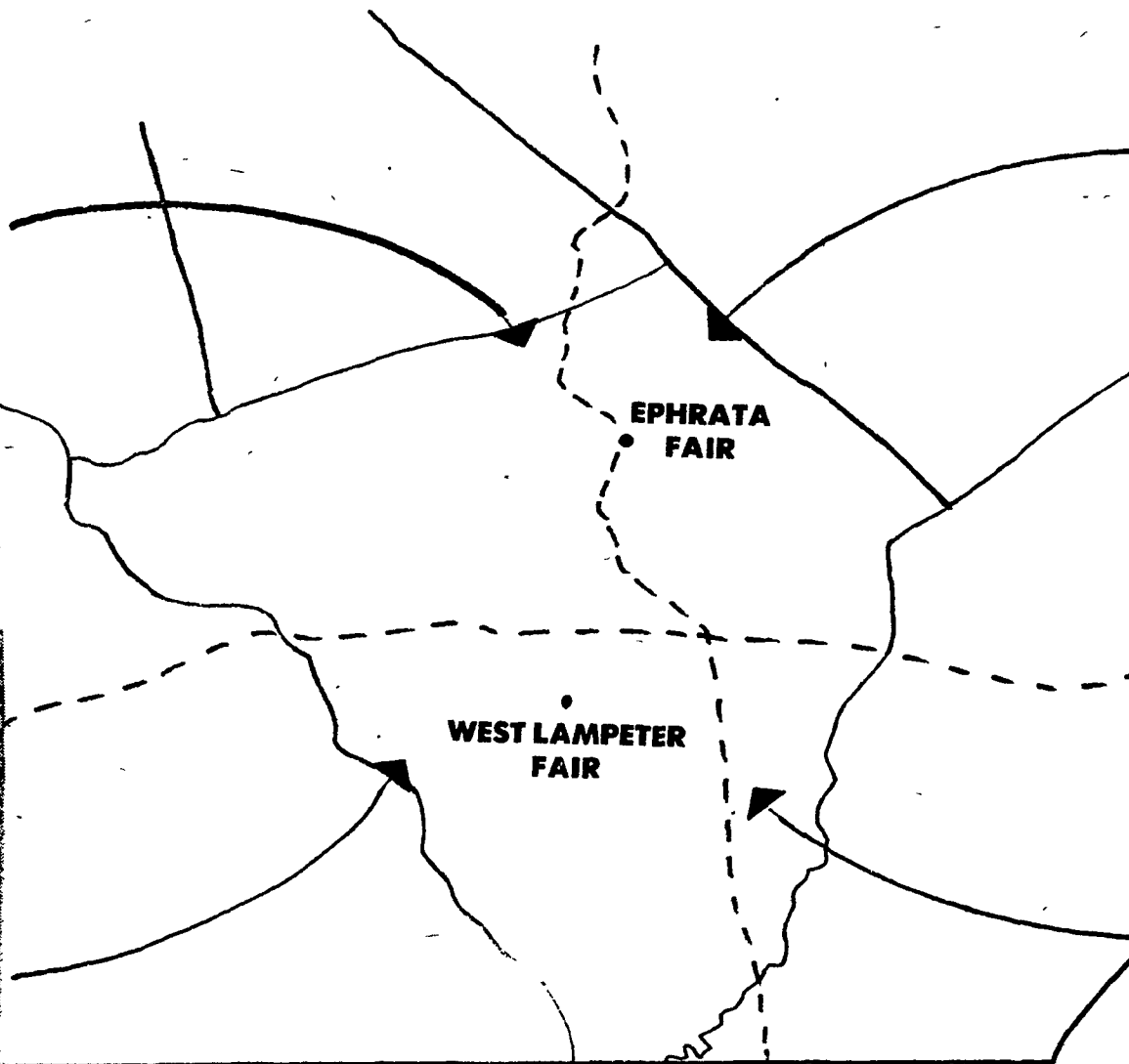
We now have four salesmen to serve you better



Paul Boyer



Ray Shissler



Ken Neff



Don Beidler

## STOP BY OUR EXHIBITS AT THE EPHRATA & W. LAMPETER FAIRS

**SEE**  
The New IH 5288 Tractor  
with the All-New Easy-  
Shifting Triple-Six  
Transmission

**SEE**  
The Krause Line of  
Rockflex Disc Harrows

**SEE**  
The Farm-Bilt Bale Wagon  
Best By Far.

**YES...  
KRAUSE  
ROCKFLEX DISKS  
LOVE ROCKS!**

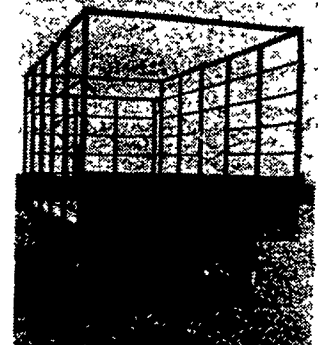
But...They CUT & FINISH Too!  
Ask A Farmer who owns one  
or call us for a price -  
you'll be surprized.

### USED COMBINES

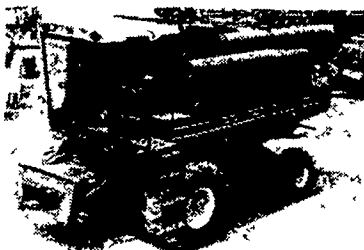
- 6817 IH 1460, 1979, 30.5x32 Tires
- 6825 IH 1460, 1978, 30.5x32 Tires
- 5742 IH 915, 1976
- 5928 IH 815, 1976
- 6126 IH 503, Diesel Hydro w/4 Row Narrow Corn Head
- 6892 IH 403, Combine w/743 Corn Head
- 6389 JD 105, Gas
- 5413 JD 45, Diesel
- 5886 AC L2 Gleaner
- 5373 MF 300 Gas, w/2 Row Corn Head
- 6098 NH 975, w/Row Corn Head

### RUGGED STEEL BALE WAGONS

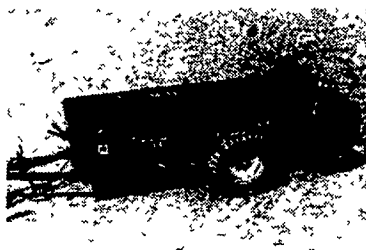
- 18' or 21' long
- 8' wide inside
- 8' high
- Fold down front gate w/diamond plate platform
- Swing-out tailgate
- 8 ton gear w/ extendable tongue
- New 9.5Lx15 tires



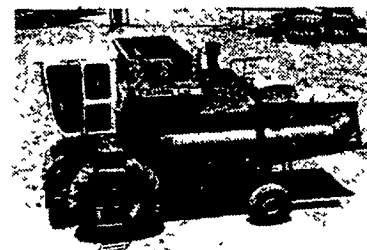
BACKED BY HOOBER PARTS & SERVICE  
In 717 & 215  
Call Toll Free For Price: 800-732-0017



6817 IH 1460 Combine, 1201 hours, Diesel engine, Hydro trans., Cab w/Air & Heat, 30.5xL32 10 ply Goodyear



6661 IH 175 Manure Spreader, 175 Bushels, 540 PTO



5886 A.C. Gleaner L2 Combine, Diesel engine, Hydro trans., Cab w/Air & Heat, 23.1x34 8 ply Firestone

ALL NEW & USED  
PRODUCTS BACKED BY  
**HOOBER PARTS  
& SERVICE**

**RADIO CONTROLLED TRUCKS FOR BETTER SERVICE**  
**C.B. HOOBER & SON INC.**

INTERCOURSE, PA (717) 768-8231 AUTHORIZED UPS STATION

