

USED LAWN & GARDEN EQUIPMENT

TRACTORS

- Bolens Lawn Keeper (914-01), 5 H.P., w/28" Front Mounted Rotary Mower, 2 Speed Transmission ***495.00**
- Elec-Trak Garden Tractor E12M, 12 H.P., w/42" Under Mount Rotary Mower, 3 Speed Transmission, w/3 Speed Variable Drive ***895.00**
- Bolens Lawn Tractor G-8 (813), 8 H.P., w/32" Rotary Mower, 3 Speed Transmission, Electric Start ***995.00**
- Bolens Garden Tractor 1050 (192-02) 10 H.P., w/42" Rotary Mower, 6 Speed Transmission, Electric Start ***995.00**
- Bolens Garden Tractor 1254 (06) 12 H.P., w/42" Rotary Mower, 6 Speed Transmission, Electric Start ***1,395.00**
- Bolens Garden Tractor 1476 (01), 14 H.P., w/48" Rotary Mower, Hydrostatic Drive, Electric Start, Hydraulic Lift ***1,995.00**
- White Graden Tractor GT1622 (990-137), 15 H.P., Twin Cylinder, w/50" Rotary Mower, 4 Speed Transmission w/variable speed Electric Start ***2,195.00**
- Bolens Garden Tractor H16XL (1658), 16 H.P., w/42" Rotary Mower, Hydrostatic Drive, Electric Start, Hydraulic Lift ***2,595.00**
- Bolens Garden Tractor H18XL (1858), 18 H.P., w/48" Rotary Mower, Hydrostatic Drive, Electric Start, Hydraulic Lift ***3,195.00**
- Bolens G-172 Diesel Tractor, 17 HP, 3 pt. Hitch, Turf Tires, 2 Wheel Drive ***3650.00**
- Kubota B7100DT-16 hp., 4 wd, Ag tires, 325 Hours, with Woods 48" Undermount Rotary Mower ***4800.00**
- Kubota L225-24 hp. 2 wd., Turf Tires, 1225 Hours, with New Woods 72" Undermount Rotary Mower ***5000.00**

ROTARY MOWERS

- Meadowbrook Rotary Mower, 3 H.P., 18" Push ***85.00**
- Lawn Boy Rotary Mower, 8253, 21", self-propelled ***175.00**
- Lawn-Boy Rotary Mower - 7266, 21" Push, Side Bagger ***175.00**
- Bolens Rotary Mower, 8545, 4 H.P., 22" Self-Propelled, Electric Start, Mulching Mower ***175.00**
- Lawn-Boy Rotary Mower, 7268, 21" Push, Side Bagger ***195.00**
- Bolens Rotary Mower, 8644, 4 H.P., 22" Self-Propelled, Mulching Mower ***225.00**
- Lawn-Boy Rotary Mower, 8233, 21" Self-Propelled, Rear Bagger ***225.00**
- White Rotary Mower, 990-142, 4 H.P. 22" Self-Propelled, Rear Bagger ***325.00**

CHAIN SAWS

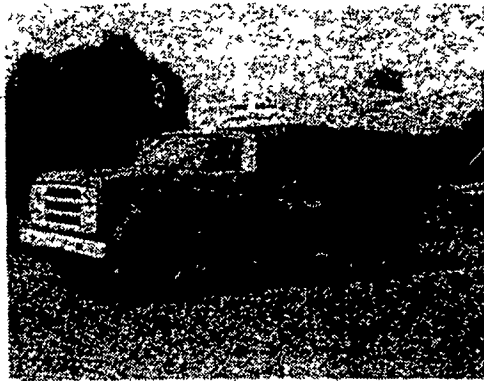
- Echo Chain Saw, 452VL, 2.7 cu. in. w/16" Bar ***200.00**
- Homelite XL, 1.6 cubic inch w/10" Bar ***60.00**
- Homelite Chain Saw, Super 2, 1.9 cu. in. w/14" Bar ***125.00**
- Remington Chain Saw, Mighty Mite 500, 2.3 cu. in. w/16" Bar ***140.00**

TRIMMERS

- Weed Eater Trimmer, XR-50, One Line Tap-For-Advance Head, 26cc Engine ***95.00**
- Echo Trimmer SRM200DA, 2 Line Manual Head, 21 cc Engine w/Blade ***175.00**

GENERATORS

- Homelite 176A 35, 8 HP, 3500 Watt, 120/240 Volt, 29.2/14.6 AMP, Automatic Idler, 5-120 Volt Recepticals, 1-240 Volt Receptical ***695.00**



1974 DODGE D500

18,500 GVW, V8, 5 Speed, 6 New 9.00x20 Tires. Truck has been reconditioned by us and is ready to go to work, with New Omaha Standard 12 ft. Grain Body, Steel Floor, 40" Steel Sides, 26" Cattle Fold Down Racks, Omaha 51DA Single Cylinder 10 Ton Hoist. New 30 gal. Aux. fuel tank. New 24" Tool Box.

***8500.00**

1972 IH FLEETSTAR 2000

32,000 GVW, 5 & 2, 230 Cummings, With New Omaha Standard 18 ft. Platform, 40" Steel Grainsides, Harsh RL-108 Hoist.



NEW & USED REPLACEMENT PARTS

Heavy Duty Wet or Dry VACUUM CLEANERS

11 MILWAUKEE ELECTRIC TOOL MODELS

- 1/2 bushel to 55 gal. capacity
- Heavy-duty filter
- 1 1/2" I.D. hose connections.
- Complete line of accessories, including new heavy-duty Hand Blower.

SEE US FOR LOW PRICES



- Used New Idea 54 ft. x 8 in. Transport Auger, Top Drive, Good Condition ***1750.00**
- New Bush-Hog 48 ft. x 8 in. Transport Auger, Bottom Drive, Special Price ***2250.00**
- New Bush-Hog 53 ft. x 8 in. Transport Auger, Bottom Drive, Special Price ***2350.00**

USED OLIVER TRACTOR PARTS

NOTE: We Have A Good Selection Of Used Oliver Tractor Parts For The Following Models: 55, 66, 77, 88, 1600 Call and Check With Paul Weaver We Will Ship UPS

- 1 - 155-897A Reconditioned Crankshaft with NEW Bearings, .010 Rods - .020 Mains, Fits - 1655D 1750G, 1755G, 1800G
 - 1 - K-119D Reconditioned Crankshaft with NEW Bearings, .010 Rods - .010 Mains, Fits - Super 88 & 880 Gas or Diesel
 - 1 - 166-425A Reconditioned Engine Block, Fits - 1655D
 - 1 - Wide Front End - Rebuilt, Fits - 1550 - 1955
 - 1 - Rebuilt 55 Gas Engine, Complete
 - 1 - 770 Gas Engine, 1100 Hours, Complete
 - 113296 - 1 new and 1 used - Cylinder Head fits HG Crawler, Crawler Serial #526A000 and up.
- OLIVER 70 PARTS**
- BS-415-A (D600E508) New Exhaust Manifold
 - BS-425-A (D600F510) New Intake Manifold
 - BS-100-H (D600A619) New Bare Engine Block Tractor Serial #240145 and Up
 - B-152-B (D6001408) New Camshaft Tractor Serial #223255 and Up

RAINBOW TARPS

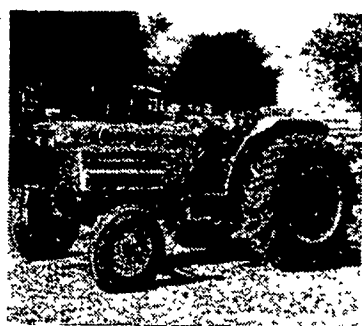
22 OZ. RED FARM BODY COVERS w/12" Drop & Fitted Front

- 14 ft. Farm Body Cover ***195.00**
- 16 ft. Farm Body Cover ***215.00**
- 18 ft. Farm Body Cover ***240.00**
- 20 ft. Farm Body Cover ***265.00**
- 22 ft. Farm Body Cover ***325.00**

SPECIAL 5% CASH DISCOUNT OFF ABOVE PRICE TILL SEPTEMBER 30, 1981
On all Rainbow Farm Body Covers

LESS EXPENSIVE LIGHTWEIGHT TARPS IN STOCK

New & Used Replacement Parts for Oliver #5 T-Row Corn Picker In stock



WHITE 2-62 DIESEL UTILITY TRACTOR

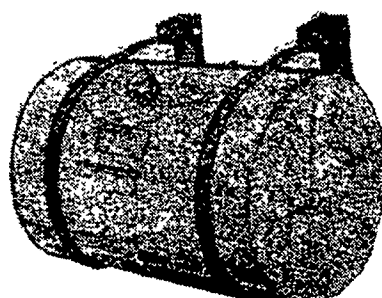
60 PTO HP, 219.3 Cu. In., 4 cylinder, Power Steering, Differential Lock, 20 speeds Forward - 4 Reverse, Independent 540 PTO, 16.9-30 Tires, Single Remote Valve with Hoses & Couplers, Rear Wheel Weights, 8 Front Weights

80 Hours Demonstrator Price **\$13,500⁰⁰**

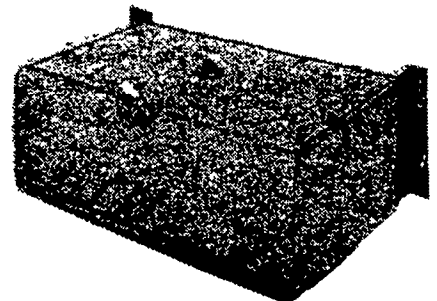
Less Sept. Factory Rebate of ***850** Your Price:

\$12,650

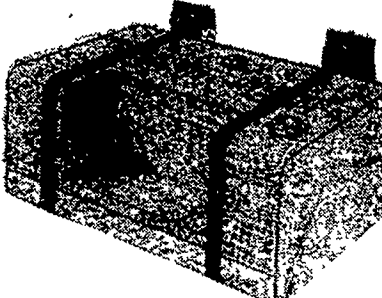
HARSH FUEL TANKS



CENTER FILL MODEL
30 gal. - ***223.00**
40 gal. - ***253.00**
50 gal. - ***273.00**
60 gal. - ***293.00**



SCHOOL BUS TANK
30 gal. - ***208.00**
40 gal. - ***233.00**
50 gal. - ***265.00**
60 gal. - ***290.00**



50 GAL. STEP TANK
***380.00**
w/Brackets

Single Fuel Line Kit for above tanks: ***36.00**
Installation Charge: ***25.00** per tank

FARMERSVILLE EQUIPMENT INC.

WHITE - BRILLION - BUSH HOG - FOX - VICON - KUBOTA - BOLENS - HOMELITE - ECHO - HARSH - OMAHA STANDARD

RD 4, East Farmersville Road, Ephrata, PA 17522
Located in the Village of Farmersville, Lancaster County
717-354-4271
Hours: Mon., Tues., Wed. & Fri. 7:30 A.M. to 5:30 P.M.
Thurs. to 8 P.M. Sat. till 3 P.M.

