

SWINE

SWINE

FARM EQUIPMENT

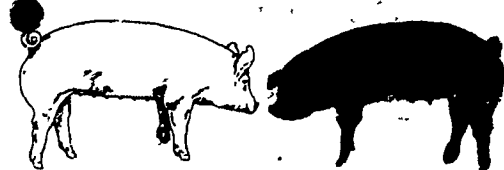
FARM EQUIPMENT

FARM EQUIPMENT

FARM EQUIPMENT

FARM EQUIPMENT

YORKSHIRE BOARS - DUROC BOARS.



QUALITY - Our hogs are marketed at Hatfield Packing Co. 95% #1. No. T.B. **PRODUCTION** 1979 - 131 Litters, wean ave. 11.3 1980 - 97 litters, wean ave. 11.5 1981 - 48 litters, wean ave. 11.1. **FEED EFFICIENCY** 1976 PA State Test Station Most efficient pen purebred hogs 2.96# feed/lb. gain. 1979 top boar, PA State Test Station, 2.63# feed/lb. gain. 1980 Top Boar Delaware test station 2.24# feed/lb. gain. **HEALTH** Vaccinated against Lepto, Erysipelas, and Rhinitis, Brucellosis free herd #101. Negative tested for Pseudorabies.

Approx. 100 boars available at all times.

**24 Yorkshire Boars
12 Duroc Boars**

Our trucks will be traveling in Centre County on Sept. 22. They will be in Southern Lancaster County the week of Sept. 21st.

Our trucks will be traveling west on PA Turnpike to Martinsburg, Myersdale and to Western Ohio the week of Oct. 5th. We can give free or reduced delivery along these routes. Free delivery in Lancaster County most Mondays.

Ready for Service
Price - \$300 - 500

Call or Write

Yorkshires. Durocs
Leon L. Arnold Lawrence Arnold
Rd 7 Box 705 1245 Cumberland St.
Lebanon, PA Lebanon, PA
717-273-5880 717-272-9827

Next Sale November 6th

FARM EQUIPMENT

FARM EQUIPMENT

For Sale - Allis, Chalmers D-17 two row corn picker. Good working condition. Mounts on D-17 tractor. 215-298-2788. After five. \$400.

For Sale - Zook's liquid manure spreader w/ auger & spinner ground drive. Ready to go for pit manure. Apply to Elam Lapp, RD 2 Box 59, Millersburg, PA 17061. Dauphin Co.

NH #708 crop dryer, #763 drying bin for sale. Oil fired, run by two 5 hp. 3 phase motors. Best offer. Anthony's Feed Mill, Strasstown, PA 215-488-6211

Oliver 2 row potato digger; potato elevator to fit IH Super C; front end loader to fit IH 340 Farmall; NH forage wagon, PTO, off load, AC4 row no til cornplanter, 3 pt. hookup. Call Herr Fruit Farms, 717-285-5976

Wanted - JD 37 Manure Loader. 717-532-3213

Int. 400 diesel. 814-696-0868

NI 7 corn picker, \$500. 310 gal. Sunset tank and compressor, \$500. Fox short hopper blower, \$300. Gehl forage box \$400. IH Super C \$1000. 1969 K-20 Chevrolet 4 wheel drive w/all angle Myers plow, \$1000. 717-833-2021

Int. T340 Crawler loader 4-in-1 bucket and ripper, new under carriage and many other new parts. Excellent condition. \$4995. 717-927-9464 after 5 P.M.

Sales and Service for Detroit Diesel Engines 53-71 & 92 series, -40 through 435 hp. Parts in stock, water, pumps, fuel pumps. Blowers, matched and balanced injectors also sales and service on MWM Murphy Diesels 6 through 112 hp. air or water cooled. Daniel's Engine Control RD 3 Ephrata, PA 17522 Phone 717-733-3890

1967 Chevy Truck, Detroit motor, 5-2 transmission, 18' Omaha grain and cattle bed with all accessories, new tires, excellent condition overall \$5,400 firm. 301-824-2917

Wanted - 880W Grass Head to fit New Holland 890 or 892 Forage Harvester. 717-653-5663

New Idea Uni 728 corn head 4 RN field ready. 713S grain head, 740 feeder house almost new, 729 sheller and 710 combine. Call 201-537-4460. After 6:30 P.M.

Two new 165 bu. Farmer Boy gravity bins. \$800. Melvin Lapp, Gap RD 2 1st farm left, South of Gap on 41.

For Sale - IH 806 diesel wide front, 3 pt. 18-4 38 rubber. Good condition. \$7500. 215-683-5283. Eves.

Ford 3 cylinder diesel tractor engine, 200 hrs., positively must sell, \$1400 or best offer. 215-562-5088 evenings.

For Sale - JD 55 self-propelled combine with cab and 14' grain head, exc. condition; Oliver 13 disc #64 grain drill with double disc openers and hyd. lift, exc. condition. 215-766-0479 evenings.

For Sale - Oliver 14' transport disc harrow, exc. condition; Int. #10 grain drill, 16 disc with hyd. lift, in like new condition. 215-766-0479

1977 MF 750 hydro combine, new 16' floating cutter bars. \$26,500. 609-935-7594

NH 707 forage harvester, excellent condition. Lancaster Co. 717-626-0902

For Sale - Moore no-til grain drill. Must sell. Excellent condition. Priced well below new drill. 717-362-9507

MF 44 corn head, 4 row 38" or 40". NI 303 sheller to fit with mtd. picker. Oliver 7 x 17 grain drill. 215-837-0040

For Sale - 1 row Dearborn corn picker; Case grain and corn elevator 28' 717-933-8415

For Sale - 1 Lockwood 36" Potato washer, 1 3/4" bin loader w/grader. 1 Hanes potato brusher. 302-378-9164

IH 429 WN narrow row stripper bar corn head from 503. Will fit 403. This head is excellent mechanically and good in appearance. Would consider wide row in trade. 717-464-2874

For Sale - MF 33 Grain Drill, 15 hoe. 814-793-2985

For Sale - JD 6600 Sidehill. Rotary screen. Loaded. Excellent condition and field ready. 215-845-3178

165 bushel gravity wagon for sale. 717-862-3970

For Sale - John Deere #400 Grinder-Mixer. 717-393-4732

1973 John Deere 4400 Diesel Combine, Air, 4 row corn head, very clean. Northampton County. 215-252-7091

305 NI mounted picker 8 roll husking bed, good cond., \$300 or will mount on good IHM \$1400. 9 tooth IH chisel plow \$400. 302-492-3287 or 302-492-3804

For Sale - Oliver diesel 880 tractor \$1800. Oliver 525 combine 13' grain head 2 row corn head \$1800. John Deere 2 row corn head \$250. 14 hp. Bob Cat loader 42" bucket. Butler 24" tan and heater for grain bin NEW. 302-653-6587

234 IH picker sheller, Ansel combine cab, 63 F700 Ford 5 and 2. 12 ft. grain dump. Baltimore County 301-922-5180

New 1495 NH self propelled hay bine, 12' cut with cap, will take cash or trade for hay and/or cattle. 703-234-9330

IH model 14P one row corn picker, good condition, \$400, IH 300 tractor with loader and fast hitch, fair condition, \$1250. 215-252-8285.

For Sale - 11 steel clear spanned rafters, 60' long, \$300 each; 2 10,000 gal. fuel tanks with submersible pump, \$1750 each; Dearborn post hole digger, \$325; all items in good condition. Call day 717-374-7713, evening 717-374-9366

For Sale - 2 McCurdy gravity wagons, \$400 each. King Wyse corn drag \$100. Cecil Co. 301-658-4862

International grain drill 13-7 150 bu. New Idea manure spreader. Both good condition. Best reasonable offer. Lancaster area. 717-394-6625

235 cornhead to fit JD 45 combine, exc. cond. 717-993-2745 or 301-692-6222.

Wanted AC model D road grader running condition or for parts 717-784-1779 after 5.

For Sale - Ford 601 single row picker, mounted, fair condition, won't refuse reasonable offer. 717-529-2382

5' rotary mower Ford good condition, \$380. Call Fred Crum Fairfield Pa. 717-642-5180

Will buy & sell all types of horse drawn equipment 215-593-5754

For Sale - Landoll soil master, 7 tooth chisel plow, \$4600. Lebanon Co. 717-949-6817

For Sale - JD 1250 plateless planter 6 row narrow and Cobey manure spreader, tandem axle, like new cond. 201-981-0672.

New MC rotary scythe, 7' cut, exc. for chopping corn fodder. 703-234-9330.

Potato Equipment - 1 row ih PTO digger. Dilts seed planter, McConnell 2 row planter. Package \$2500. 607-775-2663

Papec ensilage cutter #L. Good condition. Will deliver. 215-932-3753

Cider press-electric hydraulic with grinder. \$750. 607-775-2663

Int. #10 Grain Drill, 16 disc, grass seeder, fertilizer, very good condition. 215-262-5079

For Sale - 1 MF 6 row corn head, 30' rows, model 63C, low profile, will fit 550, 750, or 760 MF combine. 717-432-9738

Farmall tractor 300, good condition; JD 3 bottom plow with hydraulic lift, good condition; 8' disc hydraulic; Papec one row corn chopper; 4 section spring tooth harrow. Call Ted Harrison at 215-294-9645. \$2500 for all or sold separately.

NH 880 field chopper, 2 row corn head, sickle bar head; 1830 MM field chopper, 2 row corn head, 7' pickup head, 7' Fox sickle bar, Fox PTO blower; two 12 hole pig feeders; 100 freestalls, all in good condition. 609-935-3323

Dunmuth high moisture shelled or ear corn silo blower for sale. \$2200. Evenings 201-369-4784.

For Sale - John Deere corn picker #227. \$250. Good Condition. Phone 717-582-4059.

IH corn binder with bundle carrier. York Co. 717-235-3455 Evenings or weekends.

Wanted 1 wench and central for 1969 JD 350. After 5 P.M. 215-696-6159

HAY & BEAN RAKE, Hydraulic motor, practically new. Works perfectly. \$2500. Also, steel, no-waste baled hay racks, 22 feeding openings. \$125. Call: 607-458-5414. Write: George Platt, RD3, Addison, NY 14801. (Steuben)

For Sale - 2 18.4x34 tractor tires, 40% tread, \$50 a pair. York Co. 717-862-3536

MF 510 combine, 2 heads corn and grain. Good condition. 717-547-2387

JD 4430 & 4320, NH grain dryer. 717-547-2387

For Sale - Patz Liquidator used two years. Centre County PA 814-355-5941 or 814-355-4231

For Sale - International 403 combine with cab. 14' grain head, 4 row corn head, 36" row. Good shape. 301-387-5486

For Sale - International 403 combine Model C for parts, cab will fit. 105, 205, 303, 403, 503. 301-387-5486.

For Sale - New Idea 710 combine with 11 ft. grain platform, hume reel. \$1000. Call 814-422-8279.

For Sale - New Holland #517 spreader, triple beater, 205 bushel, good condition. \$1375. Frystown, 717-933-8764.

For Sale - 7' or 9' Mohawk chisel plow. Two rank, high clearance. \$900. Berks Co. 215-286-5387.

For Sale - Like new Long 1110 4 WD 102 hp turbo, 760 hrs., torque conv. Inquiries to P.O. Box 168 Dubois, PA 15801.

For Sale - AL Case tractor, bored out with pully on steel ready for work. Levi King, N. Lime St. Quarryville 17566

JD FBB Grain Drill, 17 disc, clutch lift, grass seed attachment, fair condition \$425.00 215-262-4501

For Sale - 8N Ford Tractor in very good condition. Phone 717-292-4634 York County

MF 4-14 plow 3 phase \$500; Rear beater and apron chain for NH 331 spreader \$50. ea. Surge model SP11 vacuum pump. Blower unit for grain or feed truck. Dual gas tanks for Ford pickup. Also rear step bumper. Losh oil furnace. Straw, round or square. Call 717-444-3284 Juniata Co.

For Sale - One vertical Martain Manure pump for 7'-10' pit. Like new. \$1750. Call 717-395-3308

For Sale - IHC 1 row pto potato digger. On rubber \$200. 301-895-5240 or 301-895-5882. Garrett Co. MD

For Sale - NI Uni-system model 734 gas, 105 hp with 36 in. 3 row corn sheller head, in exc. cond. 717-899-6667. Harry T. Keiser, Millin

For Sale - New Dion forage wagons, new gravity bin wagons, Zimmerman 6,8,10,12 ton wagon gears & elevators. New 18 & 22 ft. Better Bilt bale wagons steel or wood, Myers manure spreaders, Reiffs Farm Service, Shippensburg, PA 717-532-8601

For Sale - JD 700 grinder mixer. \$4,000. JD 8250 grain drill w/cylinder & hoses, \$2700. JD 111 disc w/cylinder & hoses, \$2,000 or best offer on any machinery. 717-896-3630

For Sale - Westgo Rock Picker, new condition, Chester Co. 215-286-9391.

20 hp Simplicity w/front end loader. Rear pto turf tires. Call 717-225-5873

Fox 4444 Self Propelled Harvester \$21,000, 6644

Fox Self Propelled Harvester for \$26,000 both w/3 row heads; Fox 3 Row Snapper Head; Fox Super 1000 Harvester with 2 row head \$2,500. IHC 830 Harvester with 2 Row Head for \$4600. All harvesters in good condition ready to work. 203-758-2765 or 203-758-1201. Call anytime

Massey Harris tractor for parts on steel. Wheels are in good shape. 717-768-8630

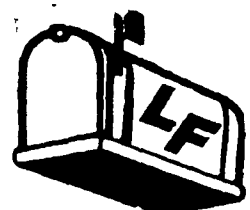
For Sale - 600 Bushel Waro-Matic roller mill with 10 H.P. motor with magnet. Call 215-256-9343

1976 AC 5040 w/AC loader. Best offer. Call 301-658-4260

MF feed blower for truck body, \$750, JD 227 picker, \$200, JD lime spreader, \$250. York Co. 717-252-1077.

HANDY CLASSIFIED AD ORDER BLANK

IMPORTANT: Be sure to include name, address, and word count PLEASE WRITE CLEARLY



Please publish my _____ word ad _____ times (Number of Words) (Number of Times)

starting with the _____ issue. Classify under _____

I enclose _____
MAIL TO:
LANCASTER FARMING
P.O. Box 366, Lititz, PA 17543

DEADLINE: 9 A.M. THURSDAY OF EACH WEEK'S PUBLICATION

RATES: 16¢ Per Word, 2.00 Minimum Charge

NOTE: Please do not use this form for Mail Box Market Ads, see instructions on last page of classified ads.

For ads running 3 or more consecutive times with no change, deduct 20% discount.

1	2	3	4
5	6	7	8
9	10	11	12-\$2.00
13-\$2.08	14-\$2.24	15-\$2.40	16-\$2.56
17-\$2.72	18-\$2.88	19-\$3.04	20-\$3.20
21-\$3.36	22-\$3.52	23-\$3.68	24-\$3.84
25-\$4.00	26-\$4.16	27-\$4.32	28-\$4.48
29-\$4.64	30-\$4.80	31-\$4.96	32-\$5.12
33-\$5.28	34-\$5.44	35-\$5.60	36-\$5.76
37-\$5.92	38-\$6.08	39-\$6.24	40-\$6.40