

Solanco fair features six sheep breeds

QUARRYVILLE — A half dozen breeds of sheep were represented at the 4-H and FFA Sheep Show during the first day of the Solanco Fair.

Youngsters from York, Lancaster and Chester counties attended the competition, now in its 7th year.

Show judge Cheryl Moran, Chester County Extension Agent looked at several youngsters before choosing the top fitters and showmen.

She went with Atglen 4-H'er Bill MacCauley, 16, for Champion Fitter. In addition, MacCauley showed many of the top Suffolk of

the day including the Champion Ram. MacCauley's sister Nancy exhibited the Champion Suffolk ewe and a third MacCauley, Donna, was the undisputed winner in the Cheviot division with her lone ewe. The Golden Fleece Club members are the children of William and Joan MacCauley.

Christine Ambler, 19, finished with a flurry of ribbons in her last year of 4-H competition. The daughter of Robert and Nancy Ambler, Cochranville, was picked as Champion Showman and added to the list of firsts she accumulated during the course of the show, one of which she earned with her



This all-female octet includes four champion ewes at the Solanco sheep show and their two-legged counterparts. From left to right the group includes: Denise Ambler, 15, Cochranville and her champion Hampshire; Jennifer Jefferis, 8, Delta and champion Natural Colored Sheep; Christine Ambler, 19 and champion; Nanette Musser, 17, Lancaster and Champion Southdown.

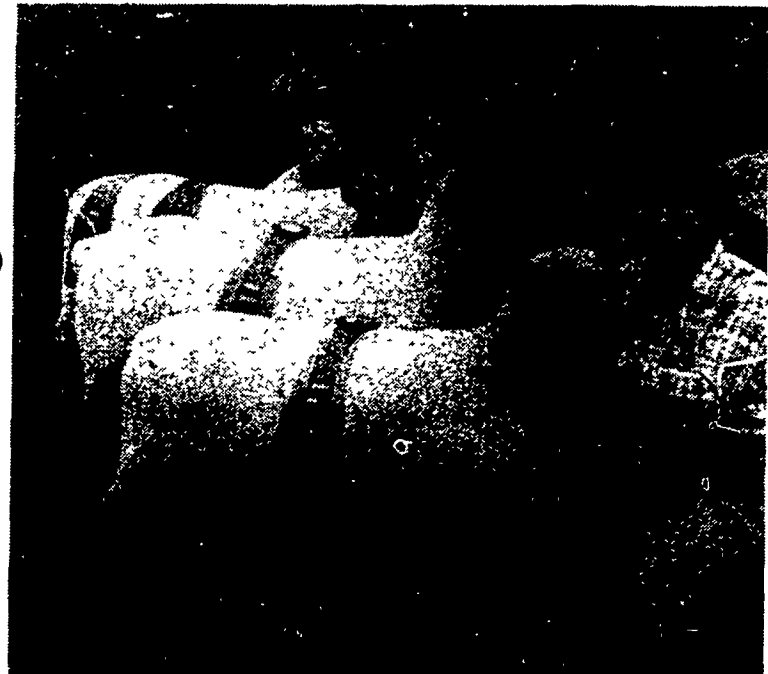
Champion Shropshire ewe.

Another Ambler, Denise, 15, dominated the Hampshire competition with several entries. The Cochranville youngster received blue ribbons in almost every class and finished with the top Hampshire ewe.

York County youth Troy Ness, 19, took Reserve Fitter and Showman. A member of the York County Lamb Club, Troy is the son of Jack and Flo Ness, Dallastown.

All ribbons in the Southdown competition were awarded to Nanette Musser, 17. A member of the Lancaster 4-H Woolies, Nanette is the daughter of Mr. and Mrs. J. Robert Musser, Lancaster.

Another clean sweep of classes went to first year 4-H'er, Jennifer Jefferis, 8, with her pen of Natural Colored Sheep. Jennifer, who also had the top lightweight market lamb, is the daughter of Mr. and Mrs. James B. Jefferis, Delta.



Three outstanding 4-H'ers exhibit the ribbons they earned for Showing and Fitting. From front to back the group is; Christine Ambler, 17, Cochranville — Champion Showman; William MacCauley, 16, Cochranville — Champion Fitter; Troy Ness, 19, Dallastown — Reserve Fitter and Showman.

Additional results of the Solanco Fair 4-H and FFA Show follow:

- Market Lambs Hwt.**
 - 1 Donna MacCauley, Cochranville; 2 Troy Ness, Cochranville; 3 Mary Muller, Delta; 4 Jennifer Jeffris
- Market Lambs Lwt.**
 - 1 Jennifer Jeffris; 2 Mary Muller; 3 Deb Martin; 4 Brian Martin
- Pen of Three Market Lambs**
 - 1 Troy Ness; 2 Mary Muller; 3 Jennifer Jeffris
- Suffolk Ram Lamb**
 - 1 Wm MacCauley; 2 Nancy MacCauley, Cochranville; 3 Troy Ness
- Yearling Ewe**
 - 1 Nancy MacCauley; 2 Wm MacCauley; 3 Troy Ness
- Ewe Lamb**
 - 1 Wm MacCauley; 2 Troy Ness; 3 Nancy MacCauley; 4 Machele Shuey, Christiana
- Pair of Lambs**
 - 1 Wm MacCauley; 2 Nancy MacCauley; 3 Troy Ness
- Breeders Young Flock**
 - 1 Wm MacCauley; 2 Troy Ness; 3 Nancy MacCauley

- Flock Same as Breeders Young Flock Get of Sire**
 - 1 Wm MacCauley; 2 Troy Ness; 3 Nancy MacCauley
- Hampshire Ram Lamb**
 - 1 Denise Ambler; 2 Greg Esh, Kinzers; 3 Mary Muller
- Yearling Ewe**
 - 1 Denise Ambler; 2 Monica Esh, Kinzers; 3 Greg Esh
- Ewe Lamb**
 - 1 Michele Mylin, Manheim; 2 Denise Ambler; 3 Mary Muller; 4 Greg Esh; 5 Monica Esh
- Pair of Lambs**
 - 1 Denise Ambler; 2 Greg Esh; 3 Mary Muller
- Breeders Young Flock**
 - 1 Monica Esh; 2 Denise Ambler; 3 Mary Muller
- Flock**
 - 1 Denise Ambler; 2 Missy Esh
- Get of Sire**
 - 1 Denise Ambler; 2 Mary Muller

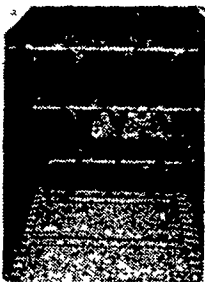
(Turn to Page A18)

The new Weaverline Series 300 battery-powered Feed Transport-Cart! CHECK THESE ADVANCED-ENGINEERING FEATURES



PROVEN UNLOADING-DRIVE LINKAGE

Smooth-running roller-chain and belt-drive combination provides 6 conveyor speeds plus individual on-and-off control of upper and lower sets of augers.



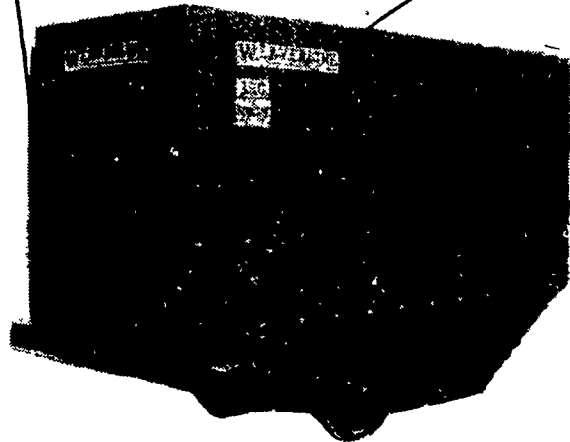
CONTROLLED UNLOADING

Apron conveyor and two pairs of augers can be controlled individually. Upper augers prevent bridging. Lower augers and conveyor control discharge flow.



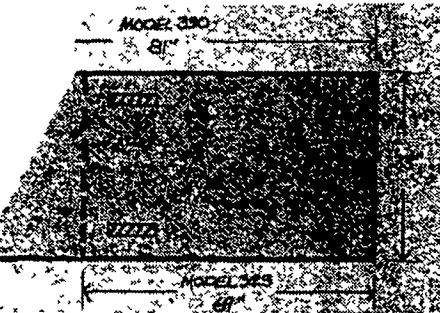
CONVENIENT POWER PACK

Weaverline 4-unit battery pack provides plenty of transport and unloading power. Batteries roll out either side of quick servicing. To charge, just plug into charging receptacle from any 115 volt AC power source.



For mechanized dairy feeding!

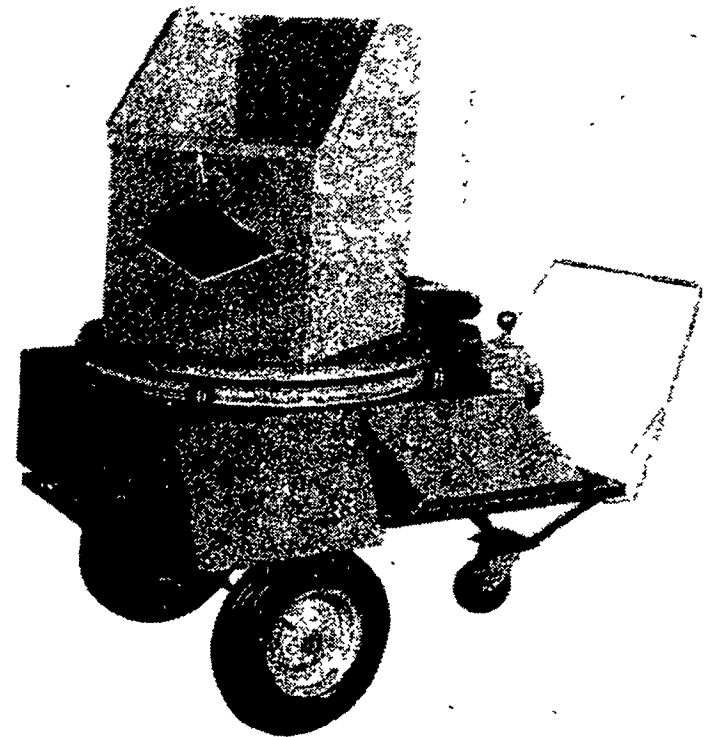
Cut your labor costs with this modern Weaverline material-handling system. Built to stand up to years of heavy loads, Weaverline Series 300 feed-transport carts are designed with larger discharge augers, more auger clearance, extra-heavy steel bottoms, stronger conveyor shafts and heavy-duty bumper guard shields. For a dairy feeding system that demands minimum maintenance and service, specify Weaverline. See these new Series 300 transport carts at your dealer. Or write Weaverline Corporation, Churchtown, Pennsylvania. 17510. Telephone (215) 445-6724.



TWO MODELS

For maximum capacity, the larger Model 330 measures 81 inches long, 33 inches wide and holds 30 bushels. For tight corners, the compact Model 323 69 inches long and 33 inches wide. Holds 24 bushels. Tricycle running gear makes both units easy to turn—easy to guide.

NEW Dynavent



BALE CHOPPER

- Chops straw, old hay or corn fodder
- Move the machine so that bedding is spread to the thickness required
- Spread and chop in one single operation
- Use in chicken houses, strawberry farms, lawn seeding
- Adjustable grate

In Stock Now Available

RYDER SUPPLY CO.

P.O. BOX 219, 539 FALLING SPRING ROAD
CHAMBERSBURG, PENNSYLVANIA 17201
PHONE 717-263-9111