

SHOP LOWE'S FOR ONE STOP SHOPPING

We Are Open 8 AM to 8 PM Weekdays, 8 AM to 4 PM Saturday and 10 AM to 4 PM Sunday

CENTER MATCHED 2x6's

PRESSURE TREATED

8'	10'	12'	14'	16'
3.59	4.57	5.47	6.27	7.26

TREATED FENCE POST		
#92104	2 to 2½x78	1.59
#92108	3 to 3½x78	2.79
#92110	3½ to 4x78	3.19

BARBED WIRE
#92054
4 Pt., 12½ Ga.
***33.95**

FARM FENCE

#92264	32x330	12½ Ga.	62.95
#92266	39x330	12½ Ga.	73.95
#92268	47x330	12½ Ga.	79.95

WELDED FENCE

#92280	2x4	48x100	12½ Ga.	39.88
#92285	2x4	60x100	12½ Ga.	53.95
#92288	2x4	48x 50	12½ Ga.	23.95

FRAMING LUMBER

	8'	10'	12'	14'	16'	18'	20'	22'	24'
2x4	1.47	2.05	2.46	2.83	3.19	3.99	4.89	—	—
2x6	2.37	3.10	3.80	4.55	4.93	5.78	6.31	6.88	9.93
2x8	3.25	4.06	5.21	5.79	6.95	8.70	8.99	10.31	11.49
2x10	5.08	5.99	7.14	8.39	10.34	11.26	12.55	14.39	17.50
2x12	6.19	8.28	9.42	11.62	13.00	14.41	17.19	—	—

SIDE WITH PRO-PANEL II

The Great Cover-up



	Plain Galvanized Steel Pro Panel II 36" Net Width	White Painted Steel Pro Panel II 36" Net Width	Red Painted Steel Pro Panel II 36" Net Width	Aluminum Pro Panel II 36" Net Width	5V Crimp Galvanized 25 Gauge 24" Net Width
8'	9.45	12.01	12.01	9.23	6.28
10'	11.84	14.99	14.99	11.54	7.85
12'	14.21	18.01	18.01	13.85	9.43
14'	16.58	20.99	20.99	16.16	10.99
16'	18.96	23.99	23.99	18.47	12.56
18'	—	26.99	—	—	—
20'	—	29.99	—	—	—
22'	—	33.01	—	—	—

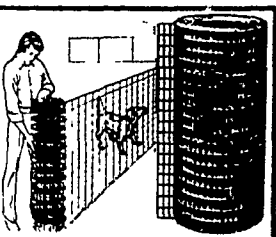
PRESSURE TREATED LUMBER

	8'	10'	12'	14'	16'	18'	20'	22'	24'
2x4	1.86	2.54	3.27	3.77	4.46	—	—	—	—
2x6	3.19	3.84	5.25	5.57	6.97	—	—	—	—
2x8	4.27	5.33	7.13	7.99	8.63	—	—	—	—
2x10	—	—	9.59	11.77	13.39	—	—	—	—
2x12	—	—	—	—	18.34	—	—	—	—
4x4	3.91	5.57	6.77	7.91	8.91	—	—	—	—
4x6	—	—	10.34	12.24	14.39	18.44	21.47	27.10	—
6x6	14.31	15.47	18.33	21.57	27.99	28.33	36.89	42.55	59.59



Aluminum-Fibered Roof Coating. Protects & renews old built-up & composition roofs. 5 gal. can. #10325
Reference Price \$32.99

\$27.99



2½ Gauge Welded Fence. Galvanized. Versatile. For poultry, window guards, cages. 48" x 100' roll. #92280

Reference Price \$53.95

\$39.88

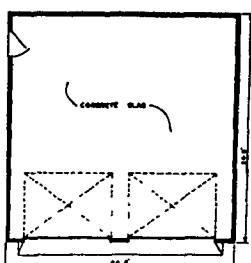
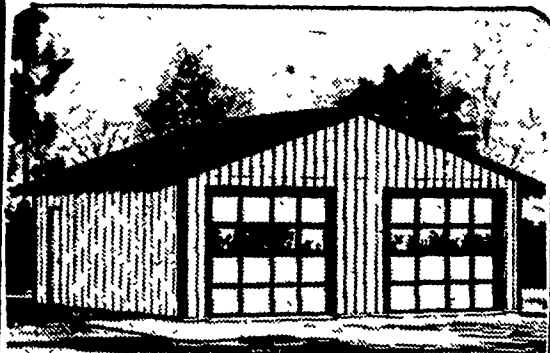


Steel Fence Post 6' high. Rust-resistant. Fastening clips every 6" Painted green. #92060

Reference Price \$3.19

\$2.79

Two Car Garage



'LH-013-A
Elevation A

24' x 24'
576 Sq. Ft.

The two-car garage materials package offers the service door and two overhead garage doors with hardware, exterior paint, nails, asphalt shingles with felt base, roof trusses and sheathing, primed V-groove hardboard siding, 2 x 4 top and bottom plates, Southern Yellow Pine wall studs, Ponderosa Pine trim.

\$1,998.

Price Includes All Materials From The Concrete Slab Up. Labor Not Included.

POLE BARN

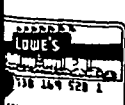
24' x 48' x 10'
\$4394⁰⁰

POLE BARN

40' x 60' x 12'
\$7059⁰⁰

We Have CANNONBALL DOOR TRACK
and Accessories For Your Barn
\$5.95 A Linear Foot, Includes Track Cover

MOWERS, GARDEN TOOLS & PATIO FURNITURE
15% OFF



Just Say-
Charge!

\$750. Instant Credit!



You may qualify for \$750 instant Lowe's credit upon presentation of a MasterCard, Visa, or American Express card. Without these cards, we can still process your application in a minimum amount of time.

NEW HOURS
Mon. thru Friday 8:00 to 8:00 P.M.
Sat. 8:00 to 4:00
Sunday 10:00 to 4:00 P.M.
Ph: 569-7341
Lowe's Of Lancaster
1107 Enterprise Rd.
East Petersburg, PA 17520

LOWE'S
Your Household Word