

Exchange student

(Continued from Page C2)

dairy barn had to be more insulated than the sheep barn." In the summer the sheep are pastured in the mountains. April and May are the traditional lambing months in Norway.

The mention of sheep and wool brought those beautiful Norwegian sweaters into the conversation, and it is true that they are authentic and stunning. Edvin brought an intricately designed sweater with him which his mother had knitted.

In Norway Edvin attended trade school and learned to wire homes for electricity. He then attended college and studied electrical engineering. He had been working for a power company as a lineman before coming to the United States, but he says, "I haven't been working as an engineer and I would like to practice what I learned in school." He will look for a job in that field when he returns.

This is not Edvin's first visit to the United States. In 1976 he traveled to Minnesota on a 4-H exchange between that state and Norway. It was a one month exchange and it whetted his appetite for more.

"I saw some, but not enough. I wanted to see more of the states and the way people live," he said.

He was not selected the first year

he applied for the program, but this year he was given the nod and as he puts it, "Here I am."

When asked if he found the United States as he expected, he said, "When I left Norway I didn't expect anything at all. I left my mind open, then whatever happened would be good. There have been no surprises. I like everything. I haven't had a boring time."

Edvin has been a member of Norwegian 4-H which is geared for young people ages 10-18, and he had projects in sheep, wood-working, forestry, cooking and others. He visited Lancaster County's Achievement Day, and says, "I liked it. I got to see some of the projects you have here."

About the IFYE program, Edvin said, "It has meant a lot. When I came I wanted to learn the way people live here and I know more about it now than when I left. I wanted to learn the language and I think I have. I wanted to learn to stand in front of an audience and talk because I knew I must show slides and now I can do that."

He added, "You get to know a country in a better way than tourists. You get to see what you want to see. You get to see how people live. You get to know people from all over the world."

Edvin's English is excellent, and

his sense of humor is easily evident. But he says speaking was difficult at first. "I knew what to say, but I had to get it out and put it in a sentence and use it."

Edvin has enjoyed the food in this country, but in talking about the food in this country he couldn't resist bragging about his mother's delicious bread. It is so good, in fact, that a host mother in Missouri baked it and won a blue ribbon with it. One reason it means so much to

Edvin is that "bread is the main thing at all the meals."

He explained that breakfast is bread, coffee and milk. There is mid-morning break with coffee and bread. Dinner at noon is the main meal of the day and usually consists of meat or fish, boiled potatoes (a "big thing" according to Edvin), and vegetables. In mid-afternoon there is coffee and bread and there is a light evening meal, also with bread.

The recipe is being included for those who wish to try it while Edvin is still near enough to consult. Edvin is proud of his mother, a homemaker who makes all the family bread, and "does everything." He has two brothers and one sister.

When his official stay is over, Edvin hopes to travel, saying, "I haven't seen the West Coast." He will return to Norway, laden with

(Turn to Page C5)

SHINDIG IN THE BARN PRESENTS:



JIM & JESSE PLUS SUNNYSIDE SATURDAY, SEPT. 19

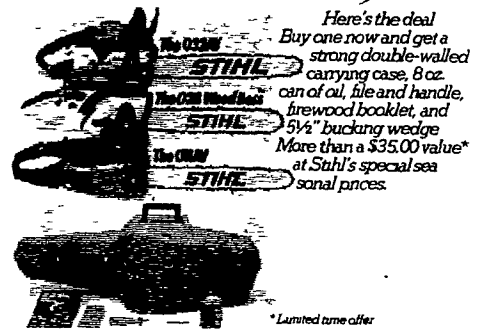
Show Time 8 P.M. — Doors Open 6:30 P.M.

Adults \$5 plus tax
Children 6-12 \$2.50 plus tax
Under 6 FREE

Held at The Guernsey Barn
5 Miles East of Lancaster
on Rt. 30

TONIGHT SEPT. 12
THE LEWIS FAMILY
PLUS THE KINGS COUNTRYMEN

THREE SOLID REASONS TO CUT YOURSELF IN ON THE STIHL DEAL NOW.



STIHL
The World's Largest Selling Chain Saw

FREE DEMONSTRATION
Chain Saw - Concrete & Metal Saw Rentals

**STOLTZFUS
WOODWORK**
RD Gap, PA Box 183
1 Mile North Rt. 897 From Gap

**A & B SALES
& SERVICE**
2 Miles South of Rt. 23 Along 772
Thru Monterey - RD 1 Ronks, PA

**MARTIN
HARDWARE &
EQUIPMENT CO.**
Rt. 501 1/2 Miles South of
Schaefferstown, PA
Phone 717-949-6817

**WES STAUFFER
SALES & SERVICE**
RD 3 Ephrata, PA
Phone (717) 738-4215
Ephrata Exit New Rt. 222,
1/2 Mile West on Rt. 322
Turn left onto Pleasant Valley Rd.

SOYBEAN ROASTING ON YOUR FARM

DON'T WASTE IT — ROAST IT

AVAILABLE NOW

Roasting Your Broiler Litter
on Your Farm

Call for more information

CUSTOM GRAIN ROASTING DONE IN PA.
AND SURROUNDING STATES



DALE L. SCHNUPP

RD 6, Lebanon, Pa. 17042
Ph: 717-865-6611

DAVID N. GROFF ALLEN SUMMERS

RD 1, Box 506C
Lewisburg, PA 17837
717-966-3593

RD #1, Box 152-C
Nottingham, PA 19362
215-932-4761

M.H. EBY, INC.

Manufacturer of All Aluminum Truck Bodies
Livestock, Grain & Bulk Feed



Aluminum Livestock Body

Distributor of **TIMPTÉ** Refrigerated Trailers
Sales & Service
Blue Ball, Pa. 717-354-4971

The BED & FURNITURE WAREHOUSE

40%-60% OFF All Stock

We guarantee lowest prices in Central Pa.

Major brands at tremendous low overhead savings.

100's of wall units, living rooms, curios, bookcases, bedrooms, bedding, bunk beds, hide-a-beds, pit groups, gun cabinets, end tables, lamps, rockers & much more.

BEAT INFLATION WITH THESE PRICES!

	Reg.	Sale	Our Price
2 Pc. Mattress Set (Sgl.)	\$169.95	\$129.95	\$66.00
2 Pc. mattress Set (Dbl.)	209.95	149.95	78.00
Bunk Bed Set - Complete, incl. Bedding	309.95	209.95	138.00
Floor Lamps	119.95	89.95	49.50
2 Pc. Living Room Suite (Herculon)	609.95	409.95	238.00
2 Pc. Living Room Suite (100% Nylon)	809.95	509.95	348.00
3 Pc. Living Room Suite (Herculon)	869.95	619.95	388.00
3 Pc. Living Room Suite (100% Nylon)	1169.95	849.95	598.00
Child's Rocker (Antron Nylon)	69.95	49.95	26.50
Rocker (Wood)	109.95	79.95	49.50
Dry Sink (Wood)	279.95	189.95	138.00
Hope Chest	229.95	179.95	139.50
Gun Cabinet (12 Gun Oak)	509.95	389.95	268.00
3 Pc. End Table Set (Chrome)	209.95	139.95	78.00
3 Pc. End Table Set (All Wood)	309.95	209.95	118.00
Hide-A-Bed (Queen)	609.95	449.95	248.00
5 Pc. Bedroom Suite (Pine, Maple)	709.95	489.95	298.00
Captain's Bed	319.95	249.95	148.00
Desk	189.95	129.95	78.00
7 Pc. Dining Room (Trestle Table)	909.95	689.95	468.00
Recliner	169.95	129.95	88.00
Wallhugger	339.95	249.95	178.00
9 Pc. Dining Room Suite	1889.95	1369.95	978.00
5 Pc. Bedroom Suite (100% Solid Wood)	1829.95	1329.95	898.00

HRS: Mon.-Fri. 10 A.M. - 8 P.M. Sat. 10 A.M. - 4 P.M.
LAYAWAYS & TERMS AVAILABLE

MANHEIM - MT. JOY EXIT ON RT. 283
RAPHO INDUSTRIAL PARK - BLDG. #3
717-653-8096