

Hay Markets

New Holland Hay

Monday, September 7
Report supplied by auction
75 loads.

Alfalfa 72.00-144.00; Timothy 81.00-132.00; Mixed 77.00-133.00; Straw 45.00-65.00; Corn 105.00-125.00.

Good's Auction

Leola, Pa.
Wednesday, September 9
Report supplied by auction
58 loads.

Straw 49.00-60.00; Alfalfa 77.00-115.00, one at 125.00; Timothy 77.00-112.00; mixed 78.00-138.00; Ear Corn 90.00-110.00; one Shelled Corn 3.00 bu.; two Oats 2.20 & 2.25 bu.

Frederick Co. Hay Auction

Frederick, Md.
Thursday, September 10
Report supplied by auction
12 loads.
Mixed 100.00; Timothy 82.00-93.00; Alfalfa 95.00-133.00; Ear Corn 82.00-96.00.

Regional Hay

Tuesday, September 8
Report supplied by PDA
(All hay No. 2 and better, prices paid by the dealers at the farm and per ton.)
Hay & straw steady, steady to strong.
Alfalfa 75.00-100.00; Mixed hay 60.00-80.00; Timothy hay 55.00-80.00; Straw 30.00-45.00; Mulch 20.00-40.00.

Green Dragon Hay

Ephrata, Pa.
Friday, September 4
Report supplied by PDA
35 loads hay and 5 loads straw.
Alfalfa 80.00-103.00; Mixed hay 65.00-105.00, mostly 84.00-99.00; Timothy hay 85.00-100, one at 65.00; Clover, one at 98.00; Stubble hay, one at 52.00; Straw 65.00-72.00, one at 30.00; Ear Corn, 29 loads 88.00-115.00, mostly 100-108; Shelled Corn, one \$3.00 per bushel; Oats, 2 loads @ \$2.25 per bushel.

Keister's Hay

Wednesday, September 9
Report supplied by auction
14 loads.
Timothy 80.00-84.00; Mixed 60.00-80.00; Alfalfa 90.00-99.00; Straw 35.00-41.00; Ear Corn 98.00-101.00.

Pa. Grain

Tuesday, September 8
Report supplied by PDA
Compared with last Monday's market for Southeastern, Central and South Central Pa. Corn unevenly steady. Wheat steady to 10 cents higher. Barley steady to weak. Oats steady to 10 cents lower. Ear Corn unevenly steady to weak.

Prices paid delivered to dealers dock - (All prices per bushel, except Ear Corn per ton.)

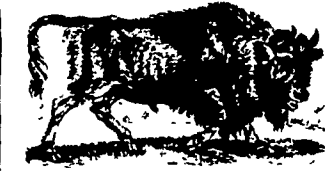
Southeastern Pa.
Corn No. 2-y range 2.90-3.20, few reported down to -2.78, average 2.99; Wheat No. 2 range 3.15-3.30, few reported 3.48, average 3.25; Barley No. 3 range 2.10-2.30, average 2.18; Oats No. 2 range 1.75-2.00, average 1.87; Buckwheat range 9.80, average 9.80; Ear Corn range 84.00-95.00, few reported 77.00, average 87.37.

Central Pa.
Corn No. 2-y range 2.75-3.10, average 2.95; Wheat No. 2 range 2.90-3.25, average 3.07; Barley No. 3 range 2.00-2.25, average 2.13; Oats No. 2 range 1.50-1.90, average 1.69; Buckwheat range 10.00, average 10.00; Ear Corn range 80.00-95.00, average 86.43.

South Central Pa.
Corn No. 2-y range 2.90-3.10, few reported 3.30, average 3.08; Wheat No. 2 range 2.85-3.00, few reported 3.25, average 2.98; Barley No. 3 range 2.05-2.40, average 2.23; Oats No. 2 range 1.90-1.95, average 1.91; Ear Corn 80.00-90.00, average 87.75.

Western Pa.
Corn No. 2-y range 2.75-3.20, average 3.08; Wheat No. 2 range 2.90-3.00, average 2.95; Barley No. 3 range 2.05-2.15, average 2.10; Oats No. 2 range 1.65-1.90, average 1.78; Ear Corn range 86.00-90.00, average 88.00.

Southeastern, Central & South Central Summary
Corn No. 2-y range 2.80-3.15, average 2.99; Wheat No. 2 range 2.90-3.30, average 3.15; Barley No. 3 range 2.05-2.40, average 2.17; Oats No. 2 range 1.50-2.00, average 1.78; Ear Corn range 80.00-95.00, average 87.21.



Livestock market and auction news

Lebanon Valley Auction

Fredericksburg, Va.
Tuesday, September 8
Report supplied by PDA
CATTLE 213. Compared with last Tuesday's market, slaughter cows uneven, extremes \$1.50 higher to \$1.50 lower. Individual Choice slaughter steer at 63.00, one Good at 62.75, few Good & Choice holsteins 57.35-59.10, Standard 52.25-57.75, few Utility 44.25-40.75. Choice 2-4, slaughter heifers 56.25-59.85, one at 61, Good 53.00-58.50, few Standard 43.00-48.50. Utility & Commercial slaughter cows 43.00-44.85, few 46.25, one at 49.25; Cutters 41.50-43.85, few 44.50, Canner & Low Cutters 37.00-41.75, Shells down to 30.00-36.50, few down to 21.00. Individual Good slaughter bullock at 55.00, few Utility & Standard 45.00-52. Few Yield Grade #1, 1380-1540 lbs. slaughter bulls 53.00-60. Medium Frame #1&2, 300-750 lbs. feeder heifers 43.00-45.80, few 47.00.

CALVES 273. Few Choice vealers 80.00-100, Good 70.00-87, Standard and Good 90-110 lbs. 61.00-66, 65-90 lbs. 53.00-60, few Utility 50-95 lbs. 36.00-55. Farm Calves: Hol. Bulls 85-120 lbs. 64.00-90; Hol. Heifers 90-140 lbs. 82.00-108, one 131.00. Few Beef cross bulls & heifers 75-95 lbs. 66.00-84.00.

HOGS 188. Barrows and gilts 75 cents-\$1 higher. US No. 1-2 2-250 lbs. barrows and gilts 52.25-53.10, No. 1-3 2-240 lbs. 51.85-52.50, No. 2-3 2-290 lbs. 50.00-51.10, few No. 1-3

155-190 lbs. 45.50-51.50, US No. 1-3 225-615 lbs. sows 46.50-49.75, one 50.00, No. 2-3 280-705 lbs. 41.50-47.50, few Utility 215-280 lbs. 32.00-42.00. Boars 34.00-37.00.

FEEDER PIGS 28. US No. 1-3 25-30 lbs. feeder pigs 71.00-73 per hundredweight, lot No. 1-3 50 lbs. at 78.00. Cwt, lot No. 1-3 102 lbs. 63.00-Cwt.

SHEEP 5. Few Good and Choice 50-95 lbs. spring slaughter lambs 42.00-52, one at 59.00. Individual Slaughter ewes at 23.00.

GOATS 14. Few Adults 45.00-60 per head. Krds 15.00-18, one 30.00 per head.

Joliet Cattle

Thursday, September 10
Report supplied by USDA
CATTLE: Friday through Wednesday's salable receipts 2,700; 5 days last week 4,169; same period a year ago 3,600. Trading moderate on Tuesday; moderately active on Wednesday. Slaughter Steers ended the week mostly steady compared to Wednesday of last week. Slaughter Heifers ended the week mostly steady, instances .50 higher compared to Wednesday of last week. Cows ended the week

steady to firm.
SLAUGHTER STEERS: Mixed high Choice & Prime 2-4 1175-1330 lb. 68.00-68.50 Tuesday; 67.75-68.00 Wednesday. Choice, few Prime, 2-4 1125-1200 lb. 66.50-67.50. Choice 2-4 1100-1200 lb. 64.50-66.00 Tuesday; 65.50-66.25 Wednesday; 1050-1100 lb. 64.00-65.00 Wednesday; 64.50-65.50 Wednesday; 975-1050 lb. 63.00-64.00. Mixed Good and Choice 2-3 950-1200 lb. 61.00-63.00 Tuesday; 62.00-64.00 Wednesday. Good & choice 2-3 1200-1400 lb. Holsteins 58.00-59.00 Tuesday. Standard 2 1500 lb. Holsteins 54.00 Tuesday.

SLAUGHTER HEIFERS: Mixed Choice and Prime 2-4 950-1025 lb. 64.50-64.75 Tuesday; 64.75-65.00 Wednesday. Choice 2-4 925-1000 lb. 62.75-64.00 Tuesday; 63.25-64.50 Wednesday; 800-925 lb. 59.00-62.50 Tuesday; few loads 62.00-63.00 Wednesday. Mixed Good and Choice 2-3 800-900 lb. 53.50-60.00.

COWS: Cutter & Utility 1-3 39.00-43.00 Tuesday; 40.00-43.00 Wednesday.



FRIDAY, OCTOBER 2 ON THE FARM MONTHLY BRED GILT SALE

Sale to Start Promptly at 1:00
Every 4 Weeks

Located 18 miles south of Lancaster, Pa., 6 miles south of Quarryville, take Rt. 272 to Little Britain, turn north, follow Little Britain Road to Jackson Road, 2nd farm, OR take Rt. 222, out of Quarryville to Cedar Hill Road to Little Britain Road to Jackson Road. Watch for sale arrows.

50 to 60 Head
Now selling our new hybrid gilts representing mostly York & Landrace cross. Bred for easier & less trouble over farrowing.

Due to farrow 3 days to 4 weeks after sale date. Now everything vaccinated for both Lepto & Erysipelas, wormed and sprayed for lice.

Local Trucker Available.
No Hogs Sold On Commission.

CHRIST A. BEILER
R.D. 2, Quarryville, Pa
JOHN B. STOLTZFUS
R.D. 1, Kirkwood, Pa

Abe Diffenbach, Auctioneer

NEXT SALE DATE — FRIDAY, OCTOBER 30

Let Us Know
Your Service Problems
HOOVER
DIESEL SERVICE
PH: 717-656-6133
2998 West Newport Rd.
Ronks, PA 17572

PARMAK
SOLAR-PAK
The Magnum 12
Volt with or with-
out solar power
IF YOUR LOCAL
DEALER DOES NOT
HAVE IT,
CONTACT:
PEQUEA
BATTERIES
RONKS, PA 17572
* Authorized Distributor
& Warranty Station

ATTENTION LIVESTOCK SHIPPERS!!

The Friday Cattle Sales at **VINTAGE SALES STABLES, INC.** are producing the same high market prices that are seen on Tuesday.

Many cattlemen have already taken advantage of the hottest week-end market on the East Coast. They're not sorry! How about you?

For a more profitable Friday call:

L. Robert Frame
Manager & President
215-458-8518

John Bowman
Vice Pres.
717-653-8164

Irwin Martin
Field Rep.
717-733-7434

VINTAGE SALES STABLES, INC.

Rt. 30, Paradise, PA 17562
717-768-8204

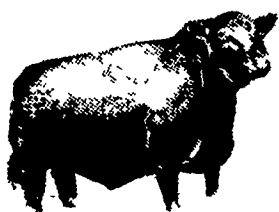
* Four trailers available for long distance and local hauling *

LEESPORT MARKET & AUCTION, INC.

North end of Leesport, PA

Turn East off Route 61

"WHERE FRIENDS MEET"



**BERKS COUNTY'S ONLY WEEKLY
CATTLE & SWINE AUCTION —
WEDNESDAY AT 1 P.M.**

**FARMER'S MARKET Every Wednesday,
12 NOON TO 9 P.M.**



Garden Fresh Fruits & Vegetables - Bakery Fresh Cakes, Pies and Buns - Butcher Fresh Meats & Cheese - Sporting Goods - Clothing - Furniture - Jewelry - Used Items & Collectibles.

PHONE: 215-926-1307

LEROY WEIST & JOHN WEIST, MGRS.