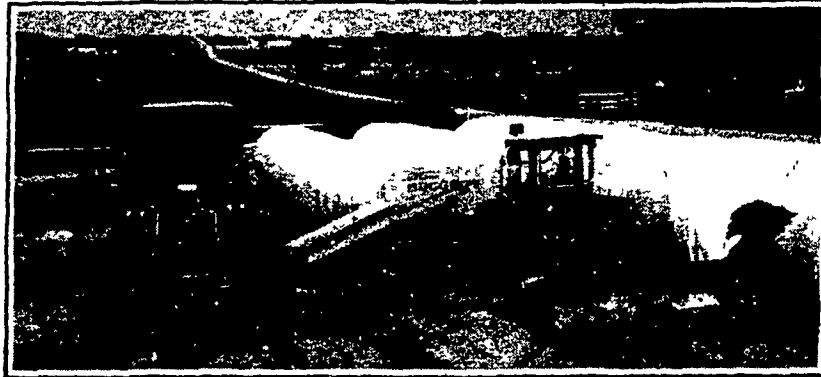


**TOTAL MANAGEMENT
MAKES THE
DIFFERENCE!**

The AG-BAG Sealed Storage System works with you as part of the total management program which can cut feed costs...improve nutrition...and increase your production and profits.

AG-BAG THE AFFORDABLE SYSTEM



**DESIGNED FOR
THE 80's**

The Revolutionary AG-BAG System gives you unlimited sealed storage capacity for ... High Moisture Grain, Silage or Haylage.

**CUSTOM BAGGING AVAILABLE
CALL COLLECT: 717-627-3665**

I want to know more about the Ag-Bag System

Mail To: **AMERICAN AG-BAG INC.**
50 E. 28th Division Highway
Lititz, Pa. 17543

NAME _____
ADDRESS _____
CITY _____
STATE _____ ZIP _____
PHONE _____



**AMERICAN AG-BAG INC.
FORAGE SYSTEMS**

50 E. 28th Division Highway
Lititz, Pa. 17543 Rt. 322 & 501 in Brickerville
Lancaster County, 717-627-3665

Exclusive Dealer For Pennsylvania, New Jersey, Maryland, Delaware, Virginia, West Virginia Note: We Need Part Time & Full Time Salesmen for These Areas

FEATURES

- ALL HYDRAULIC OPERATION
- SELF POWERED UNITS AVAILABLE
- EASILY TRANSPORTABLE

Leasing & Bank Financing Available

Field Queen Forage Harvesters **SALES, SERVICE & PARTS** Hesston Farm Equipment



- TRACTORS**
Ford 8600 Dsl.
Ford 8000 Dsl.
Ford 4000 Diesel
Ford 960 Tricycle
Ford 861 Diesel
Ford 860 Gas
Ford 800 Gas Select-O-Speed
Ford TW30 w/450 hrs.
Ford 8N
Ford A64 Wheel Loader, 2 1/2 Yd. bucket, 480 hrs.
Oliver 55 Gas w/Frt. end loader
Farmall 300
Farmall Cub Power Unit
2 cylinder Wis. Engine
Ford 370 Truck engine w/12,000 miles
EQUIPMENT
NH 770 Harvester w/2R Corn Head and Pickup Head, elec. controls
(2) NH Super 717 Harvesters w/PU head & 1R Corn Heads
IHC 350 Harvester, 1R Corn head & Hay Pickup head
JD 34 Harvester w/1R corn head
NH 1495 SP Haybine
NH 1469 Haybine
JD 1209 Mower Conditioner 9' pull type
NH 269 Baler w/thrower
Hesston 1014 Windrower
N.I. Hay Rake
Lawn & Garden Tractors w/Mowers
Massey 82 Combine w/2R Corn Head
New Class Combine w/15' Grain Head
Left Over TR75 Combine w/13' Grain Head
Case 666 2RN Corn Head & 11' Grain Head
JD 340 Offset Disc 13'

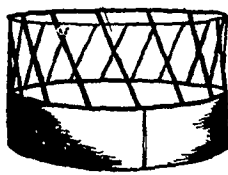
ALL WOODS BROS. FORD & NEW HOLLAND OBSOLETE PARTS 50% OFF

CHARLES S. SNYDER INC.
RD 3 Tamaqua, PA 18252
Phone: 717-386-5945

SCRANTON

ROUND BALE FEEDERS

"The Farmers Favorite"



SAVE UP TO **57%** Of The Hay You Feed

- Cuts hay waste
- Slant bar design prevents animals from crowding
- Built of 1 1/4" square tubing, stronger than round tubing.
- Cattle rarely pull hay out
- can be used for feed silage and square bales

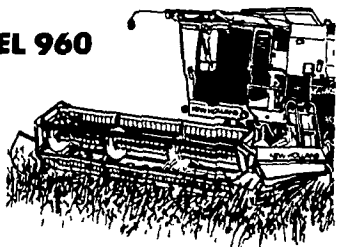
SEE US AT THE OLEY FAIR
SEPT. 17-19!
RED WING FARMS

RD #1378, Fleetwood, Pa. 19522 215-944-0791

The Time Is Right...
The Price Is Right!!

New Equipment Special...

**NEW MODEL 960
NH
GRAIN
HEAD**



...For TR 70, TR 75, TR 85 or TR 95 NH Combine, 13' direct cut header with 13' floating cutter bar, 13' hume, HC heavy duty 6 bat pickup reel and 13' protection plates. Above complete, ready to install on combine...



Was ~~\$3,895~~
Now Reduced To
\$2695

• Stop In or Call •

Sales & Service On:
• Ford • New Idea • New Holland •
WALTER G. COALE, INC.
2849-53 Churchville Rd.
Churchville, Maryland
Ph: (301) 734-7722 or (301) 879-1434

ATTENTION FARMERS

We have a Sturdy Built Gravity Bin Wagon. Ideal bin for horse farmers. Made to drive along side your picker or tow. With platform on front.

***\$385.00**

Dealers Welcome
Bell Road Wagon Shop
Rd 1 Box 280 Bell Rd.
Christiana, PA 17509

Directions - 1 mile south of Nine Points off 896 on Bell Rd.

Also Stocked at
Farm-Bilt Machine Shop
68 S. Weavertown Rd.
Ronks, PA



TRACTORS & EQUIPMENT

- | | |
|------------------------------------|---|
| IH 2400 Dsl. Tractor w/Loader | NH 451 Mowers |
| IH 460 Tractor | (3) NH 36 Crop Chopper |
| IH 340 Farmall Tractor | NH 270 Baler w/thrower |
| MF 3165 Tractor w/Loader & Cab | NH 269 Baler w/thrower |
| MF 203D Tractor w/Loader | NH 1010 Bale Wagon |
| MF 1085 Tractor | MH 35 Combine |
| MF 40 Dsl. Tractor and Loader | MF 750 Combine, 14' Grain Table & 44' Corn Head |
| MF 35 Tractor | Ford 641 Tractor w/Loader & Bucket |
| Ford 641 Tractor w/Loader & Bucket | Brillion 12' field cultivator |
| Ford 9N Tractor | NH 510 Manure Spreader |
| Farmall Super H Tractor | Ni 213 Manure Spreader |
| JD MT Tractor | AC Blower |
| NH 892 Fg. Harvester | AC 516 Plow |
| Fox 1000 Forage Harvester | |

NEW M.F. EQUIPMENT

- | | |
|---------------------------|-------------------------|
| MF 275 Tractor | MF 32 A Loader |
| MF 245 Tractor | MF 246 Loader |
| MF 265 Tractor | (2) MF 216 Loader |
| MF 285 Tractor | MF 300A Loader |
| MF 230 Diesel Tractor | MF 640 Corn Planter |
| MF 230 Turf Tractor | MF #43 2B Plow |
| MF 220 Tractor | MF 520 Disc Harrow 12' |
| MF 210 Dsl. Tractor | MF 520 Disc Harrow 14' |
| (2) MF 205 Diesel Tractor | (2) MF 320 Disc Harrows |
| MF 50C Tractor | MF 226 Scraper Blade |
| MF 30B Tractor Cab | MF 227 Scraper Blade |
| MF 30B Tractor | MF 218 Rotary Cutter |
| MF 124 Baler | |
| MF 34A Loader | |
| MF 34A Loader | |

S.G. LEWIS & SON, INC.

R.D. 2 Box 66 West Grove, PA 215-869-2214



HERR & LEAMAN

Used Farm Equipment Sales & Service
10 miles S. of Lancaster along Rt. 222

**GUARANTEED
QUALITY USED EQUIPMENT**

Would Sell Any Tractor w/or w/o cab. IH tractors w/3 pt. or fast hitch.

- IH 684 D w/590 hrs. like new, 1980 model.
- IH 656 hydro wide front 3 pt. New hydro last month.
- IH 826 gear drive, very clean, fully equipped AC D14 w/loader
- 1968 JD 4020 diesel year round cab 18x4x38" rubber, fully equipped w/600 hrs. on major overhaul. Original & very clean.
- IH 1066 w/yr. round cab new rubber, TA & clutch, new last fall. Local tractor.
- NH 717 super chopper 1 row chopper head & grass pickup. Less than 200 acres, **\$1500**
- NI 325 2 row narrow w/12 roll husking bed
- NI 324 2 row wide w/12 roll husking bed.
- IH 1206 w/year round cab real **\$1500**
- Late IH 806 Diesel fully equipped original & clean.
- IH 966 w/yr. round cab
- Farmall M with wide front
- Oliver 1850 diesel, Perkins (100 h.p.), wf, 3 pt.
- JD 38 chopper w/2-row narrow head - \$1950
- IH 706 diesel, new paint, real **\$1500**
- IH 656 diesel, local, one owner, hydro rebuilt last yr., 3 pt.
- IH 856 diesel, recent TA & engine overhaul, fully equipped
- JD 4020 D, PS, wf, good clean tractor
- IH 856 diesel, wf, 38" rubber, 3 pt., clean
- MF 300 quick attach combine w/cab & air, very clean, \$7500
- IH 715 hydro, 4 row narrow hd., 13' platform \$8500
- Gehl 3000 skid loader w/3 buckets, 360 org. hrs., w/electric clutch shut off
- Like New Bush Hog Mountomatic heavy duty loader to fit 06 to 86 series IH \$1700
- NI Uni-System 701 w/combine & 11' **\$1500**
- NI 744 4 row narrow quick tach.
- NI 738, 4 row narrow NI 727 Husking Unit
- NI 730, 4 row **\$1500** NI 725 3 row narrow
- NI 737 husking unit NI 711 grain head
- NI Quick tach throat NI 710 Combine
- NI 731 4 row wide NI 728 4 row narrow

MISCELLANEOUS

- New Aerovent high speed crop dryer model XL927, LP gas
- New Hutchinson 6'x21' utility auger
- Like new heavy duty commercial type side mount sickle bar mower, hyd. driven.
- Cab to fit 56 & 06 series, \$375
- IH & JD rear & front weights.
- 3.8x34 axle mount duals w/hubs for IH, \$500
- (2) year round cabs to fit IH 06 to 66 series
- (1) year round cab to fit JD 3010 to 4020
- Heavy duty custom made wood splitter w/12 horse Wisconsin engine, \$1000
- Box 91 New Providence, PA. 17560**
- Ph. 717-786-1606 & Evenings 717-786-4899**